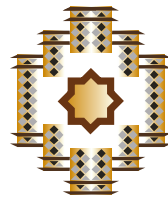


PALACETES
DE BANUS
by Velum Group



PALACETES DE BANUS



*The most luxurious new developments being built within walking distance
from the famous port of Puerto Banus in Marbella.*



Enjoy a new concept of luxury on the Costa del Sol.

Palacetes de Banús is one of the most luxurious new developments being built within walking distance from the famous port of Puerto Banus in Marbella.

PALACETES DE BANUS





M O D E R N C O N T E M P O R A R Y V I L L A S



THIS SECURE AND GATED COMMUNITY, EQUIPPED WITH THE LATEST INTELLIGENT HOME SYSTEM ALLOWS YOU TO PROTECT YOUR PROPERTY AND ENJOY MAXIMUM COMFORT WHILE LIVING IN IT. YOU ALSO HAVE THE LUXURY TO CONTROL ALMOST ALL APPLIANCES FROM YOUR SMART PHONE OR TABLET.





PALACETES DE BANÚS IS
PERFECTLY LOCATED CLOSE
TO EVERYTHING IN BANUS



Palacetes de Banús is perfectly located close to some of the most prestigious golf courses, horse riding schools and tennis and padel courts on the coastline with easy access to Marbella and only a short 2-minute drive away from Puerto Banús.

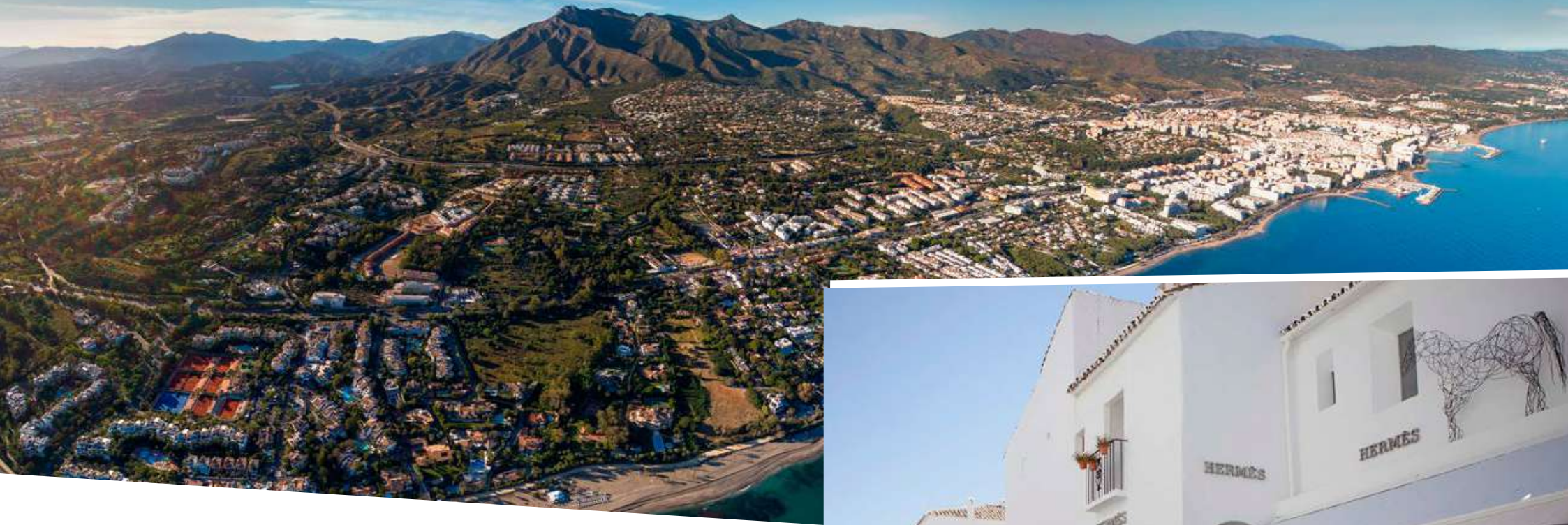
The fantastic thing about Marbella is that there simply is something for everyone. Whether you are a sports enthusiast or looking to have a peaceful lifestyle under the sun all year around, you can easily have the best of both worlds.

■ Authentic Mediterranean Food

Marbella is also known for its food culture and its many famous restaurants offering dishes from all over the world and luckily these luxurious villas are close to some of the best restaurants and cafes along the coast.

You can also find a famous private racetrack only 1 hour away from Marbella and a heliport nearby.

P R E S T I G I O U S L O C A T I O N



EXCLUSIVE
SHOPPING AT YOUR
FINGERTIPS





FIND THE PERFECT VILLA FOR YOU

THE PALACETES

SMART HOMES WITH THE LATEST TECHNOLOGY IN A SECURE GATED COMMUNITY

This secure and gated community, equipped with the latest intelligent home system – allows you to protect your property and enjoy maximum comfort while living in it. You also have the luxury to control almost all appliances from your smart phone or tablet.

■ Each villa has a unique design

All villas consist of 6 bedrooms and 5 bathrooms spread over 3 levels, with two extra guest bathrooms. The ground floor boasts a modern open floor design and it's perfectly constructed for entertaining.

Other unique features are 3 to 6 car garage, private pool and a spacious outdoor entertainment area.



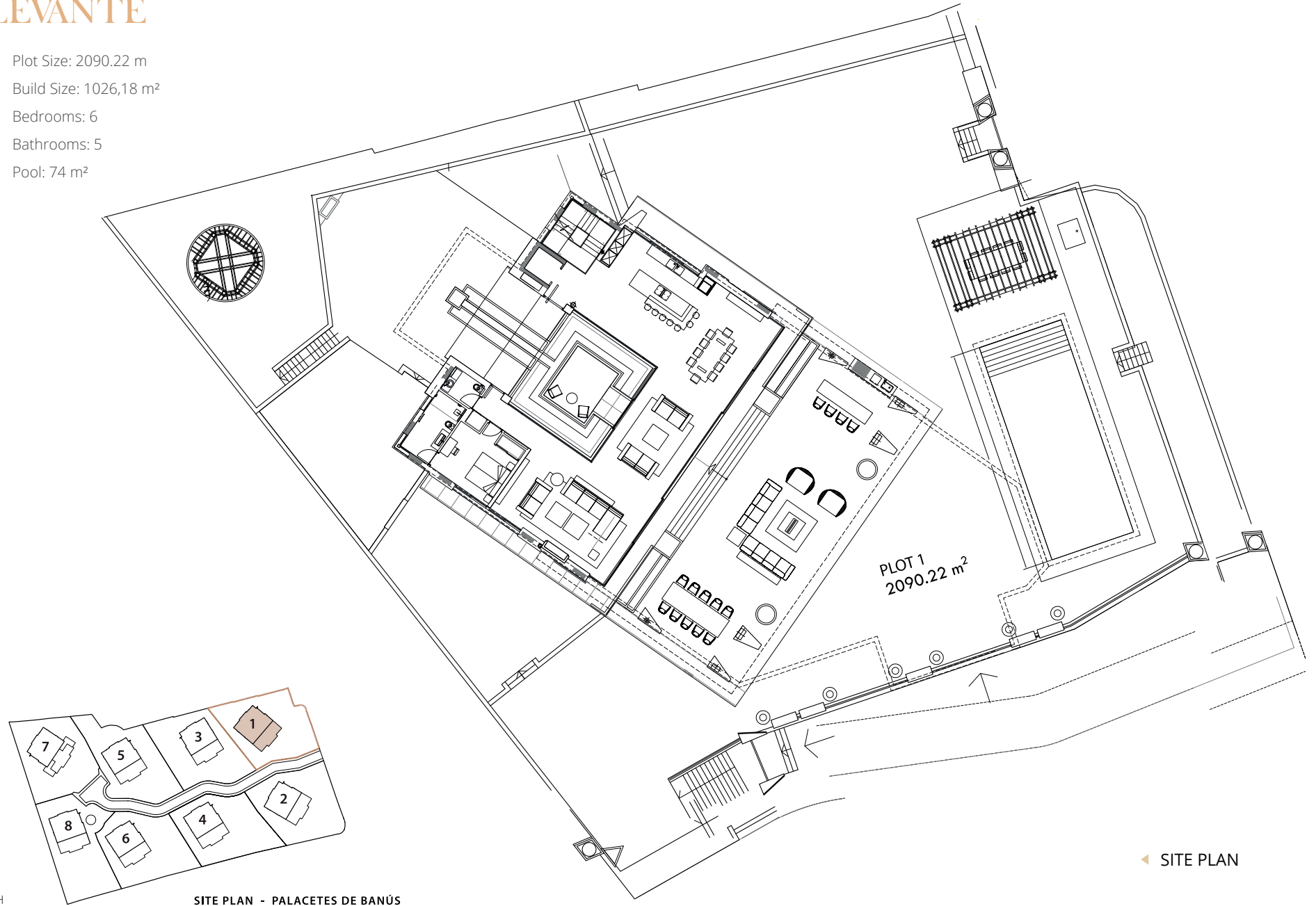
LEVANTE





PALACETE 1 LEVANTE

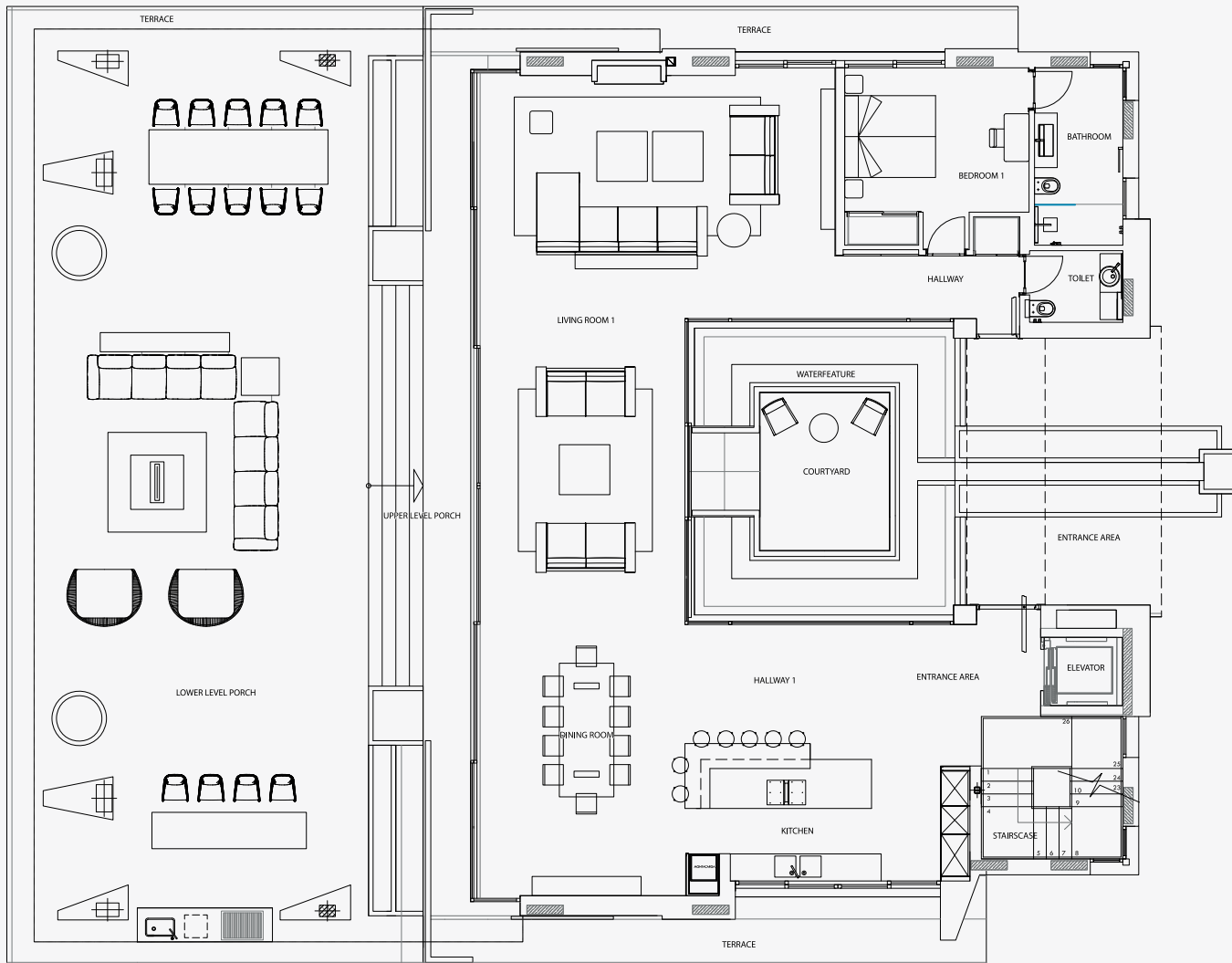
- Plot Size: 2090.22 m
- Build Size: 1026,18 m²
- Bedrooms: 6
- Bathrooms: 5
- Pool: 74 m²



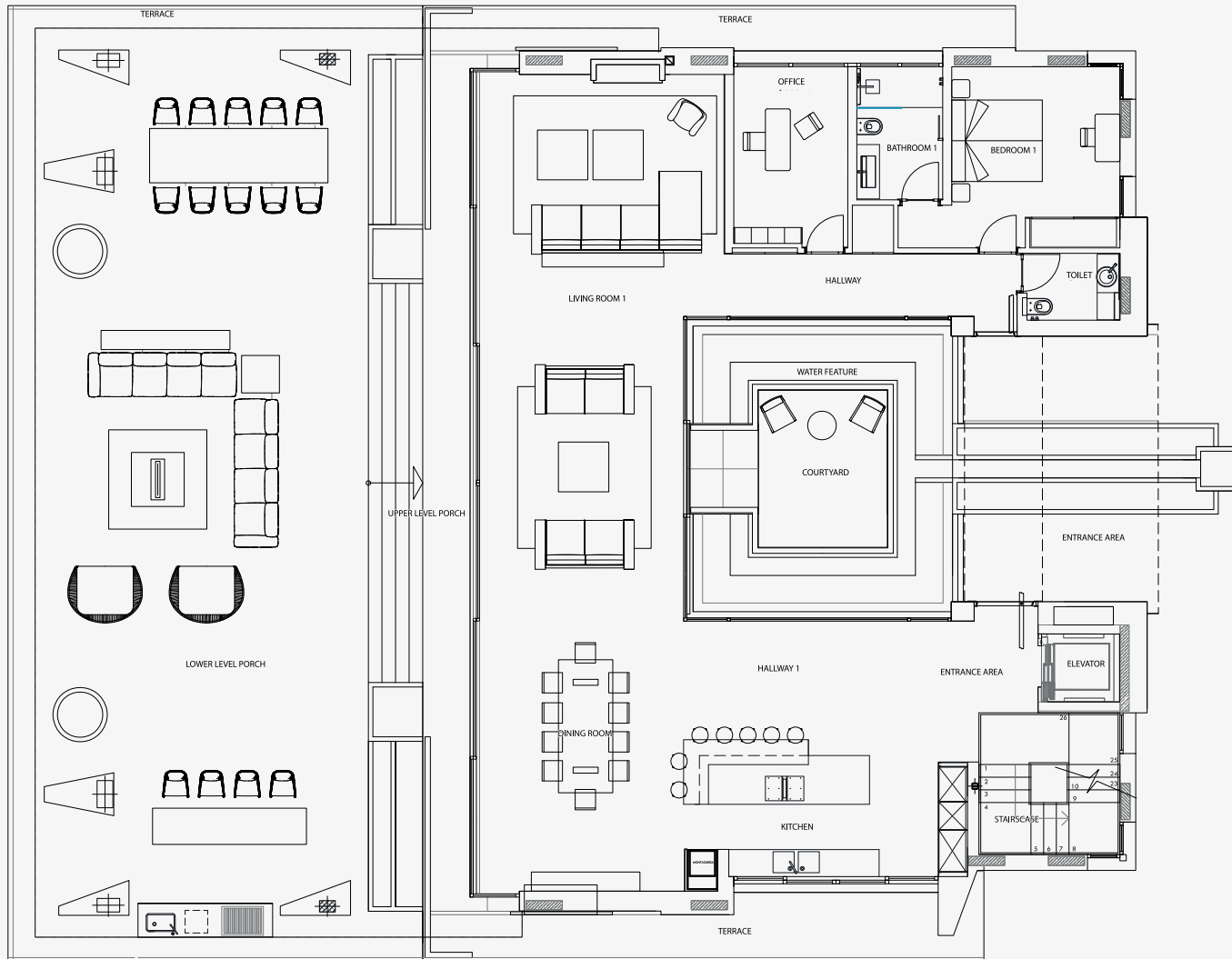
◀ SITE PLAN

^
NORTH

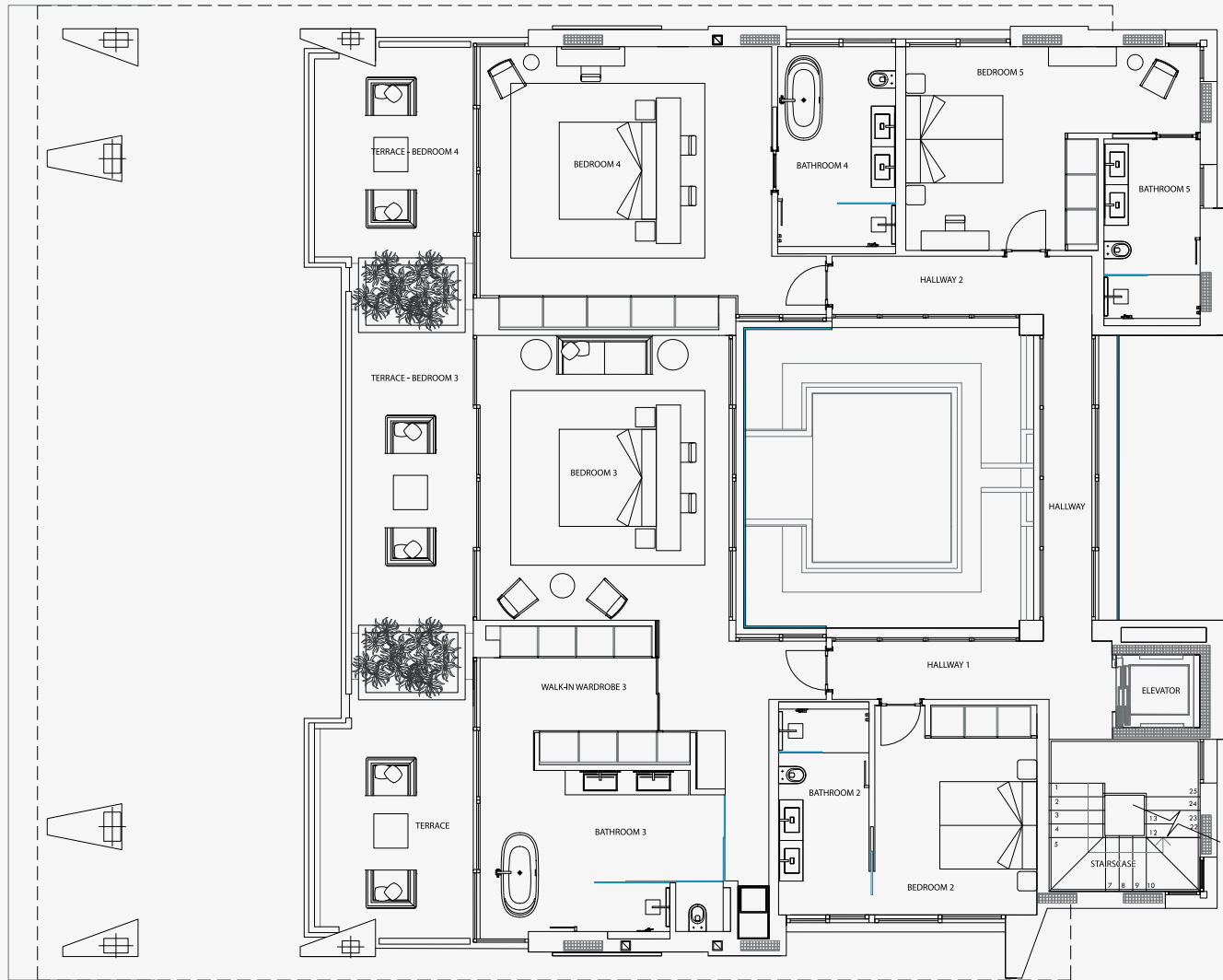
SITE PLAN - PALACETES DE BANÚS



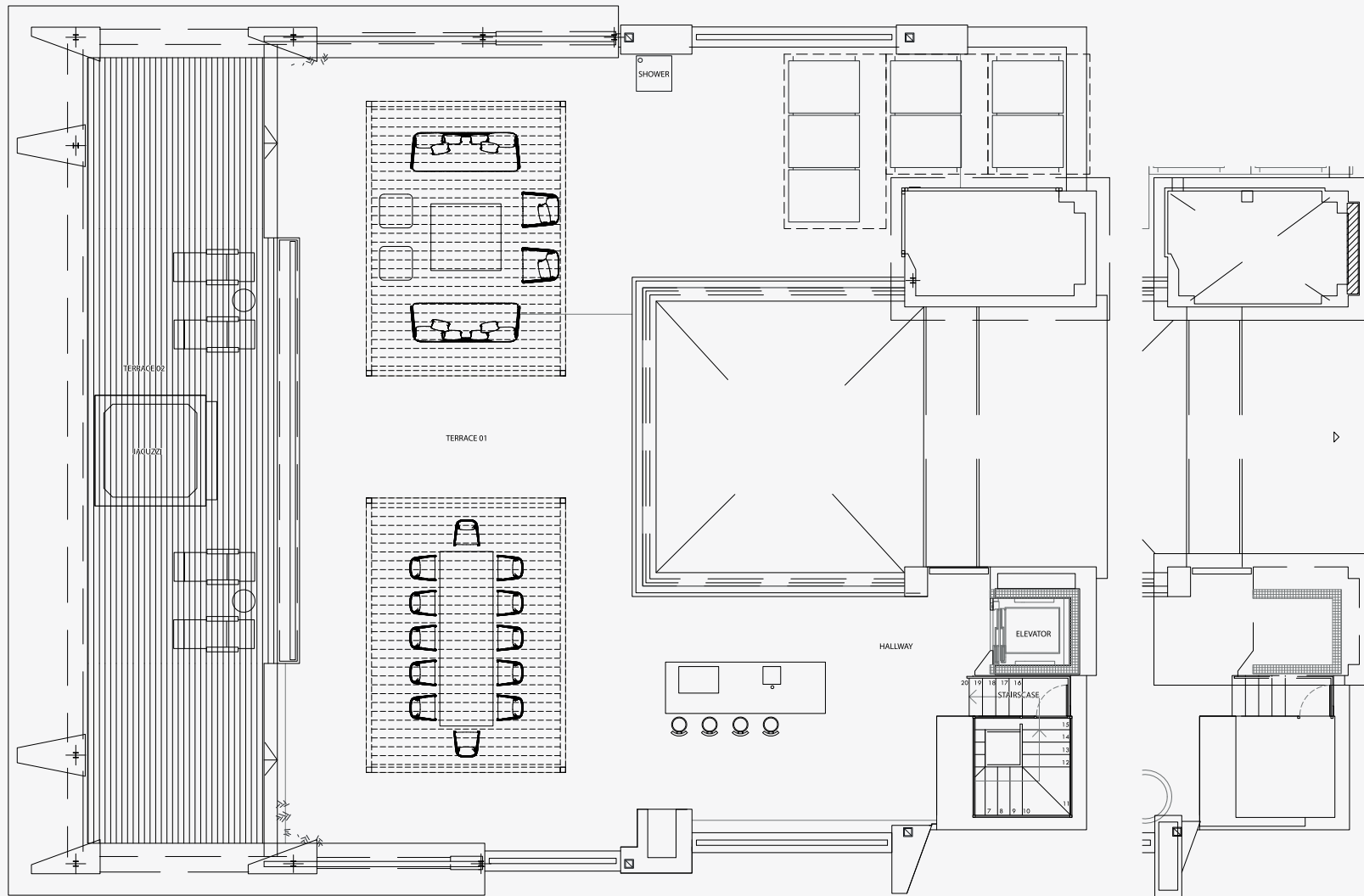
◀ GROUND FLOOR - OPT. A



◀ GROUND FLOOR - OPT. B

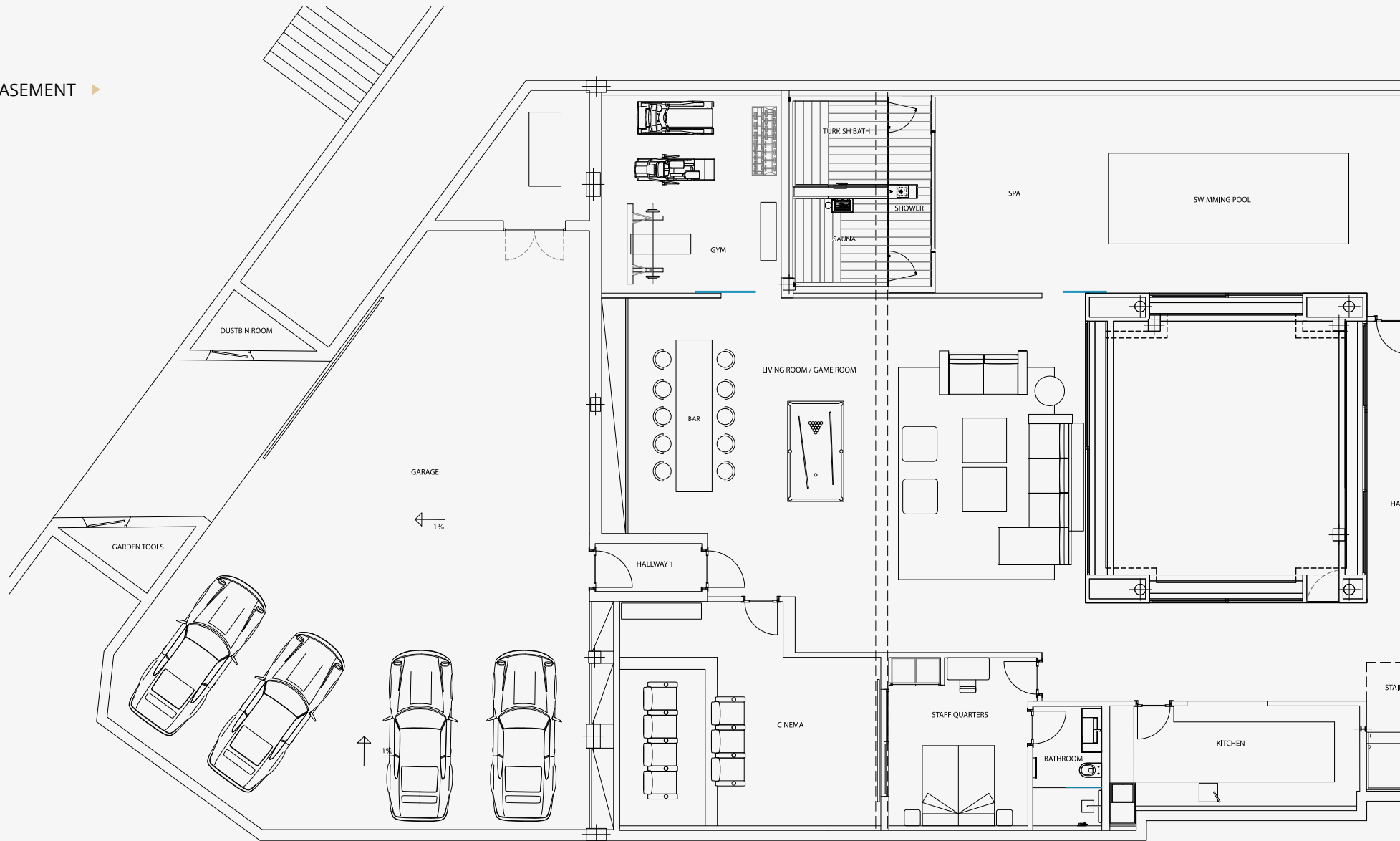


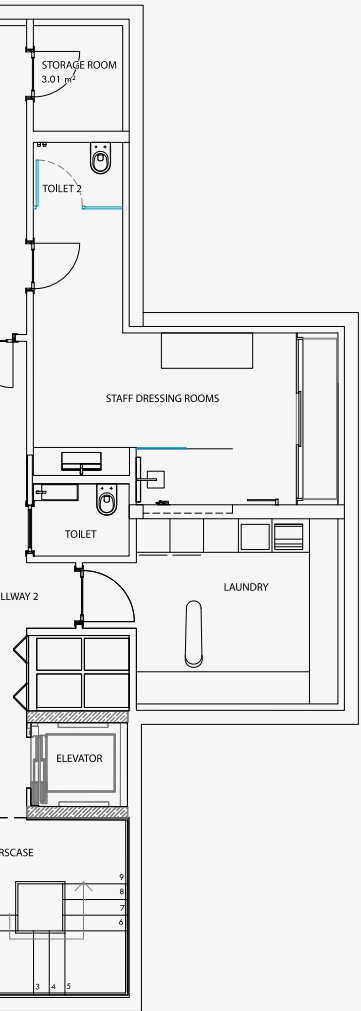
◀ FIRST FLOOR



◀ TERRACES

BASEMENT ▶



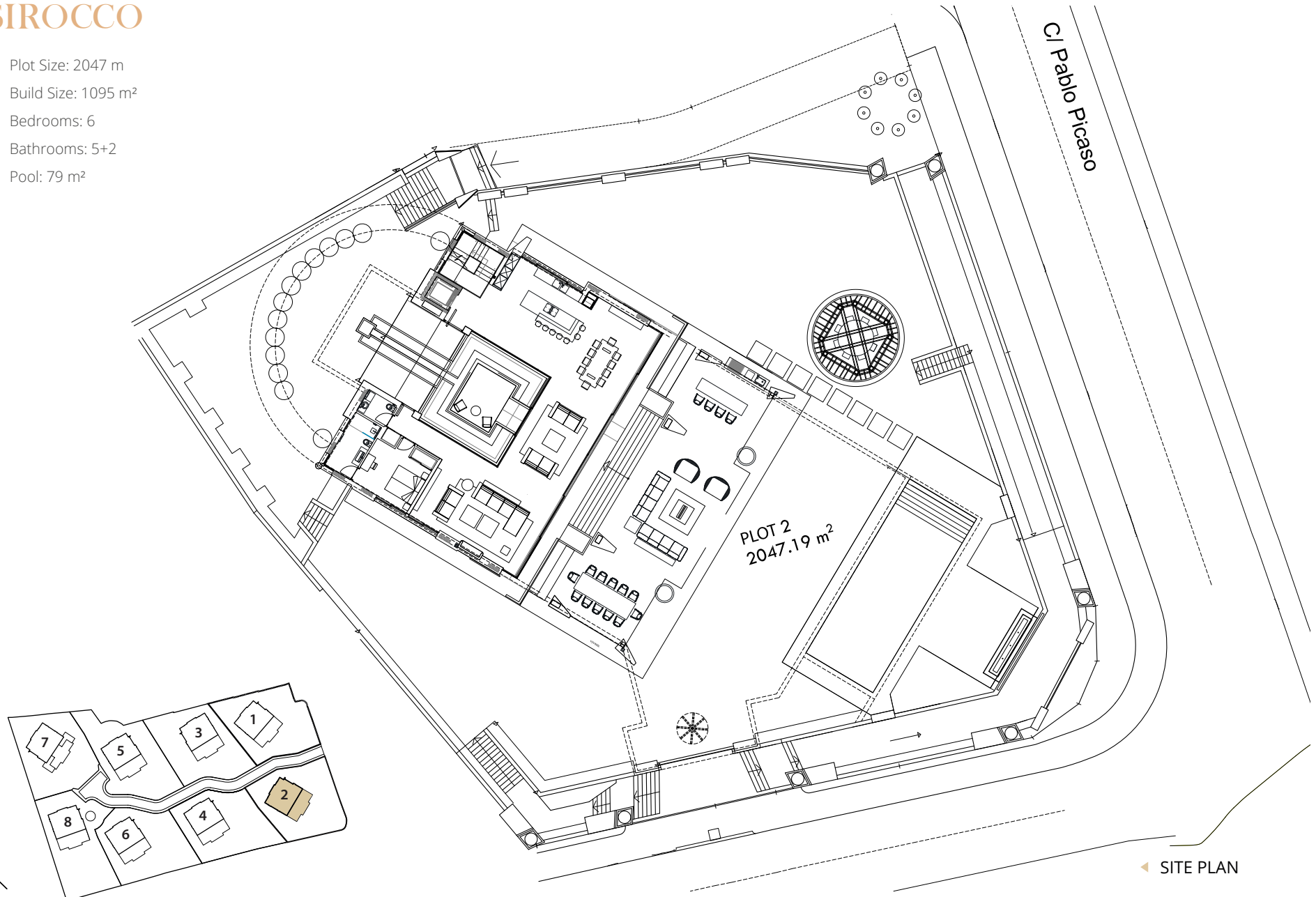


SIROCCO



PALACETE 2
SIROCCO

- Plot Size: 2047 m
- Build Size: 1095 m²
- Bedrooms: 6
- Bathrooms: 5+2
- Pool: 79 m²



▲
NORTH

SITE PLAN - PALACETES DE BANÚS

◀ SITE PLAN

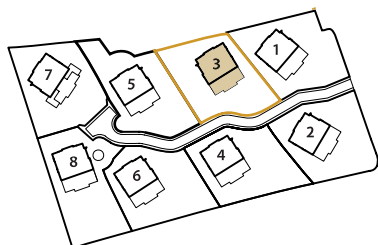
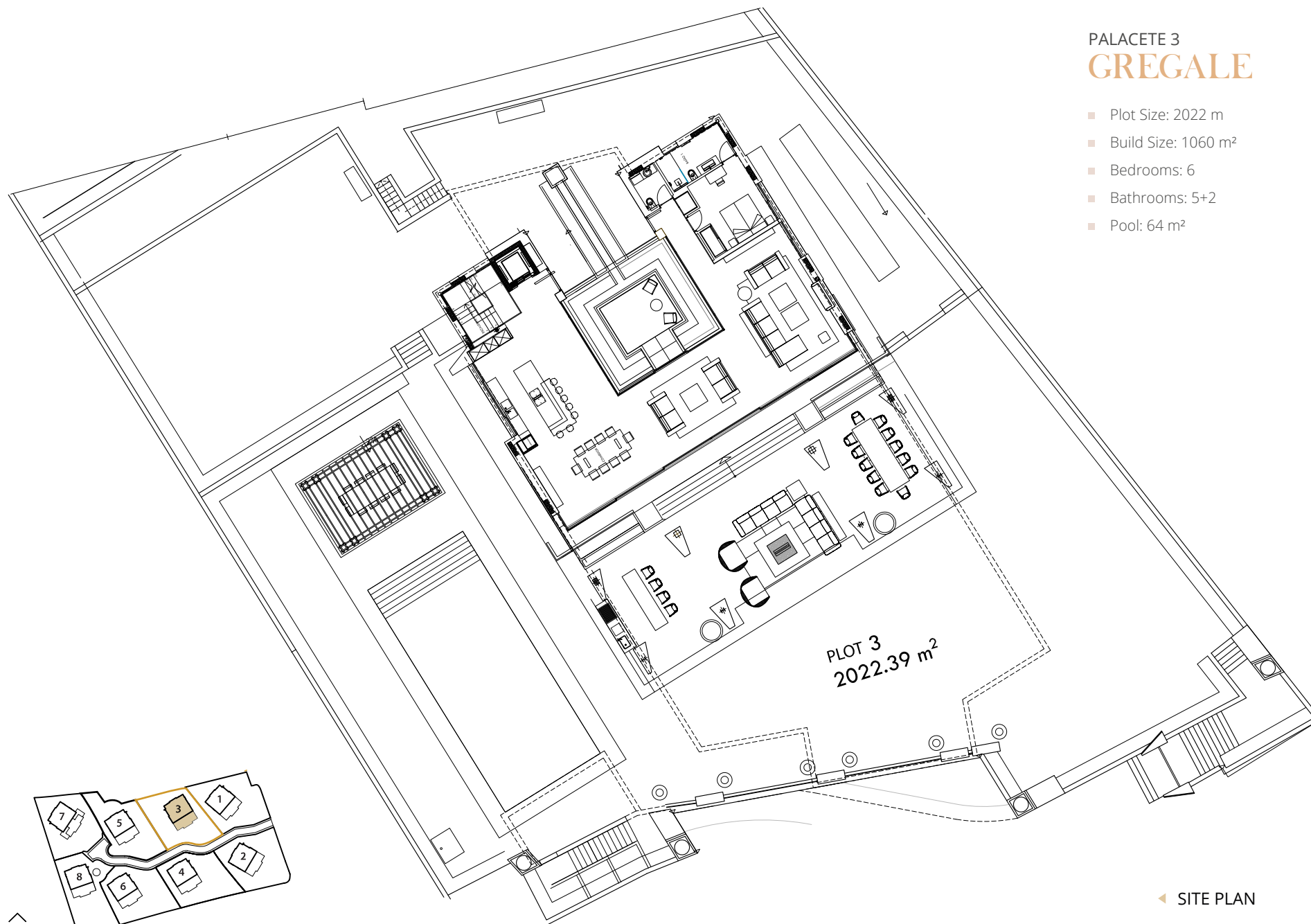
GREGALE





PALACETE 3 GREGALE

- Plot Size: 2022 m
- Build Size: 1060 m²
- Bedrooms: 6
- Bathrooms: 5+2
- Pool: 64 m²



NORTH

SITE PLAN - PALACETES DE BANÚS

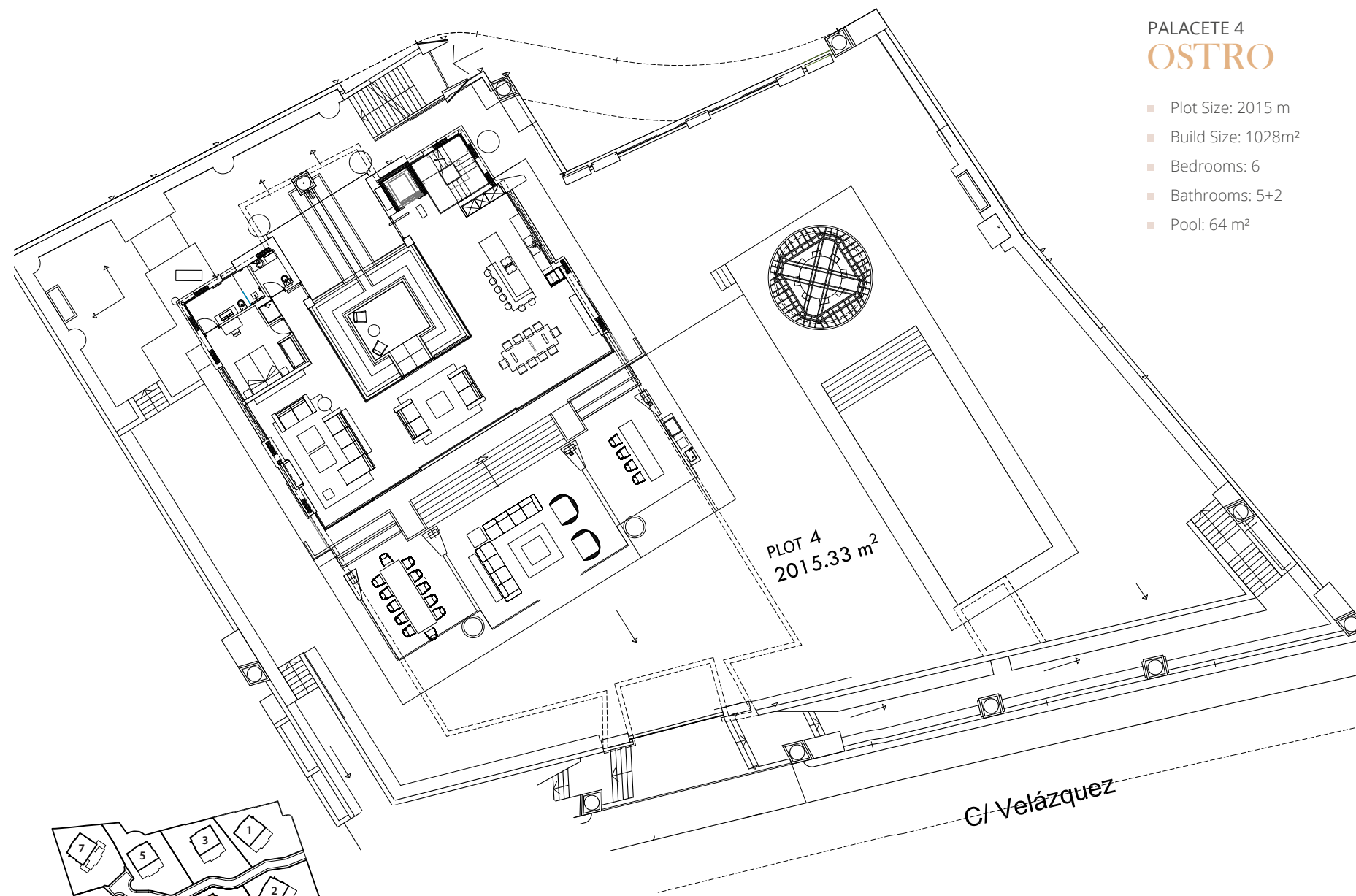
◀ SITE PLAN

OSTRO



PALACETE 4 OSTRO

- Plot Size: 2015 m
- Build Size: 1028m²
- Bedrooms: 6
- Bathrooms: 5+2
- Pool: 64 m²



PLOT 4
2015.33 m²

C/ Velázquez



NORTH

SITE PLAN - PALACETES DE BANÚS

◀ SITE PLAN

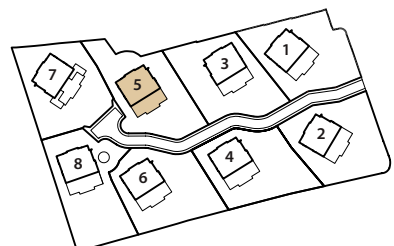
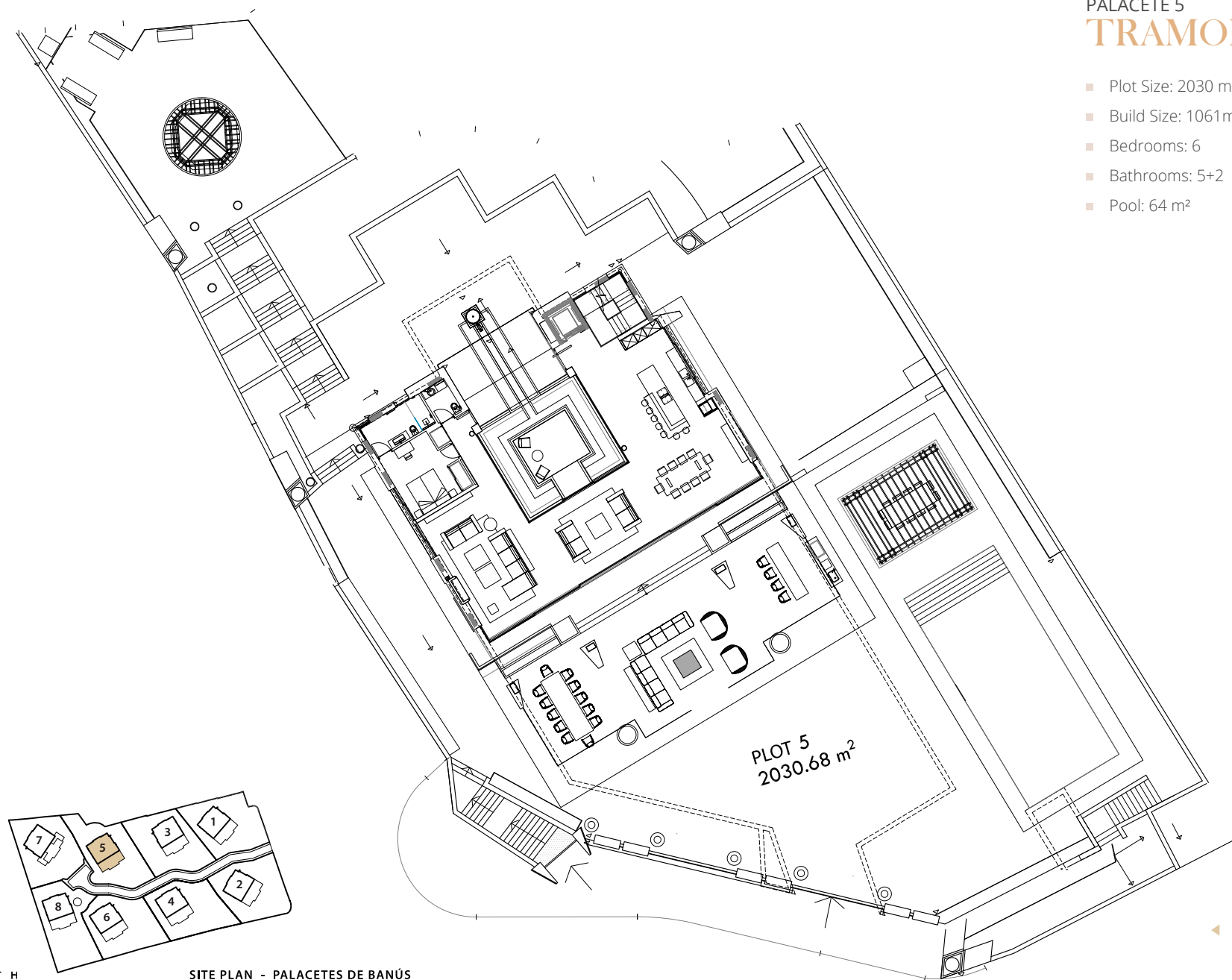
TRAMONTANE





PALACETE 5 TRAMONTANE

- Plot Size: 2030 m
- Build Size: 1061m²
- Bedrooms: 6
- Bathrooms: 5+2
- Pool: 64 m²



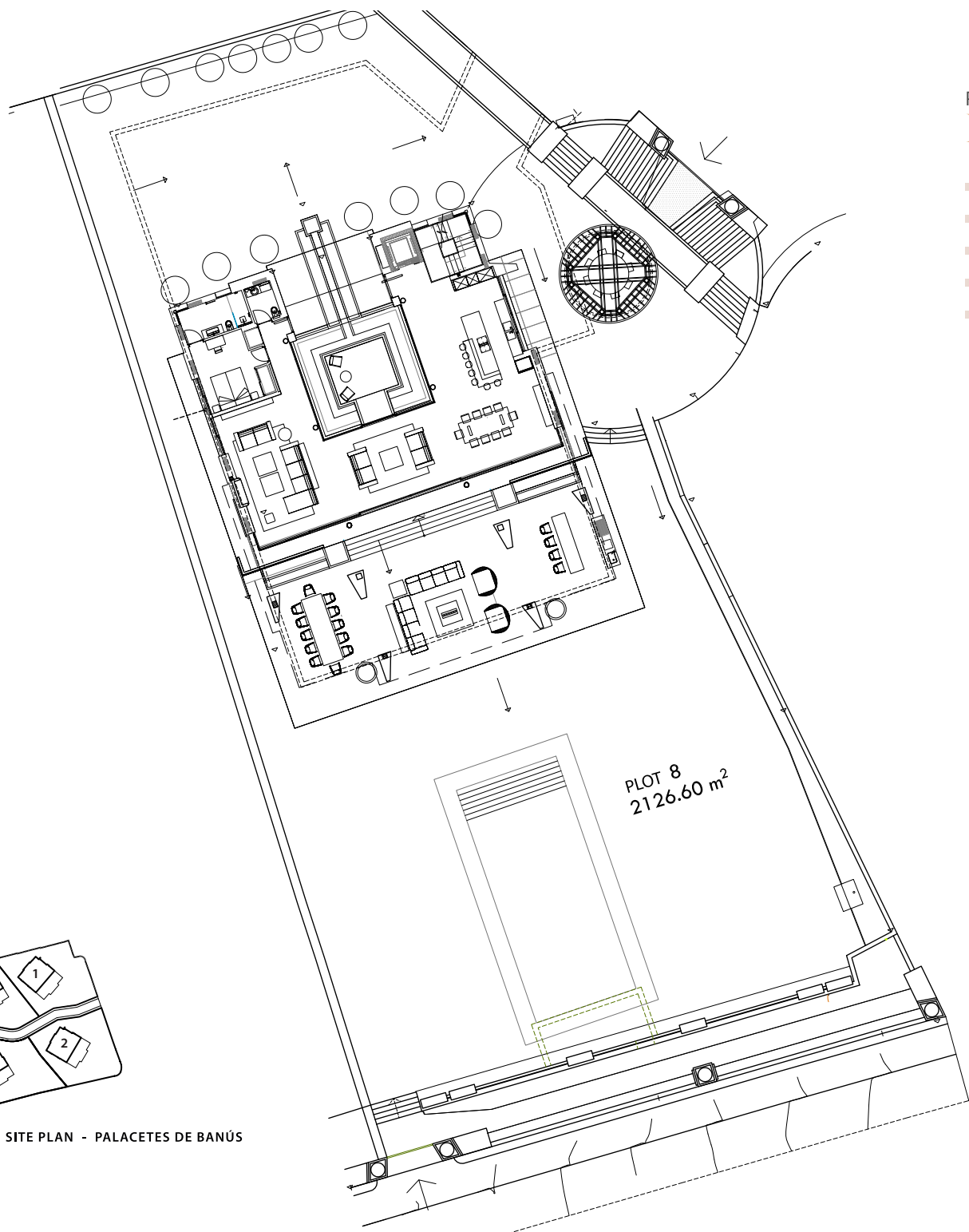
◀ SITE PLAN

^
NORTH

SITE PLAN - PALACETES DE BANÚS

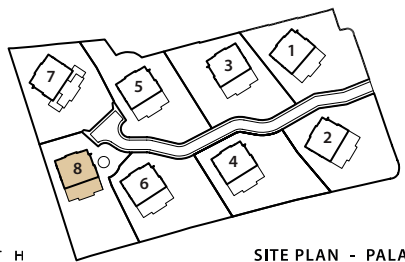
PONENTE





PALACETE 8 PONENTE

- Plot Size: 2126 m
- Build Size: 1060m²
- Bedrooms: 6
- Bathrooms: 5+2
- Pool: 92 m²



NORTH

SITE PLAN - PALACETES DE BANÚS

◀ SITE PLAN



QUALITY SPECIFICATIONS

SMART HOMES WITH THE LATEST TECHNOLOGY / GATED COMMUNITY

This 24-hour gated community, equipped with the latest intelligent home system – allows you to protect your property and enjoy maximum comfort while living in it. You also have the luxury to control almost all appliances from your smart phone or tablet.

- ✓ Technal. Safety glass. Solar Control. Laquered finish
- ✓ Large format porcelain stoneware throughout the house
- ✓ Oak wood flooring on the First Floor
- ✓ Armoured main entrance door
- ✓ Bulthaup kitchen with natural walnut wood
- ✓ Gaggenau & Miele appliance set
- ✓ Bathroom furniture set and washbasin by Idea Group



- ✓ Built-in faucets by Zucchetti
- ✓ SPA area with a 24 m2 heated indoor pool, sauna and Hammam.
- ✓ Outdoor direct expansion reversible air-to-air heat pump units
- ✓ KNX domotics system
- ✓ Light fittings by Faro and by Trolll
- ✓ Spa area with an indoor pool, a sauna and a turkish bath

■ Brands

Bora, Gaggenau, Miele, Persyvex, KNX, Bulthaup, Royal Wood, Mirage, Atlas Concord, Faro, Honeywell, Technal, Alucoil, Idea Group, Jung, Troll, Catalano, Daikin, Zucchetti, Thyssen Krupp, Galassia, Kos

PALACETTES DE BANUS

DISCLAIMER: This brochure is for marketing purposes only and does not form part of any offer or contract between any of the parties in any way. All the information contained in this brochure is known to be accurate at the time of production but is subject to change without prior notice. Note that images contained herein are based on technical plans and are computer generated artistic renders of these plans. Whilst the greatest care has been taken to ensure accuracy of the information contained in this brochure, the final project specifications and appearance can change. Anyone interested in obtaining up to date information, specifications, imagery or pricing should contact the commercialising entity listed in this brochure.





PALACETES DE BANUS



Urb. Atalaya de Río Verde, esquina C/ Picasso con C/ Velázquez | CP. 29660 Marbella (Málaga)