



CORALLISA

SIGNATURE HOMES IBIZA

VILLA 3 TOP VIEW

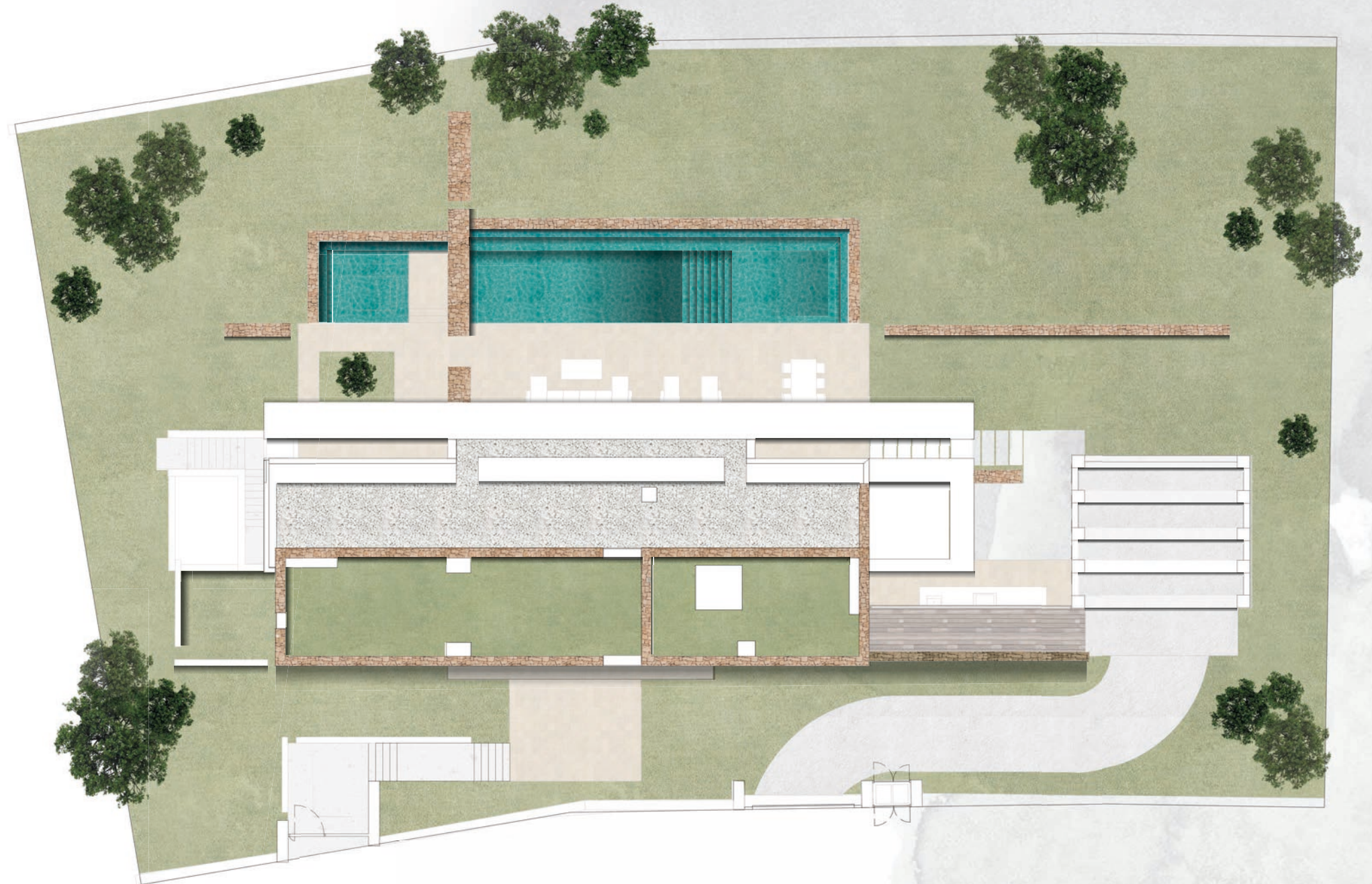
Plot surface	1.504,53 sqm
Basement	170,94 sqm
Ground Floor	196,24 sqm
First Floor	158,87 sqm
Total Interior	526,05 sqm
Covered Terrace	55,91 sqm
Uncovered Terrace	116,88 sqm
Total Exterior	172,79 sqm

Total Interior & Exterior
698,84 sqm



Project developed by:
CORALLISA 2019 PRIME DEVELOPMENT

The floor plan above is not final as it has been designed in accordance with the Building Execution Project and, consequently, CORALLISA 2019 PRIME DEVELOPMENT reserves the right to include whatever changes due to technical and/or legal imperatives required by any public Administration or Agency. These changes, in any case, will be in accordance with the progress of the construction work. The accessory elements (for example, including the kitchen) are merely for illustrative purposes. The rotation sense of doors and the distribution of sanitary fittings are not binding. The surface areas shown are approximate and, may be altered for technical and/or legal reasons in the course of the construction work.



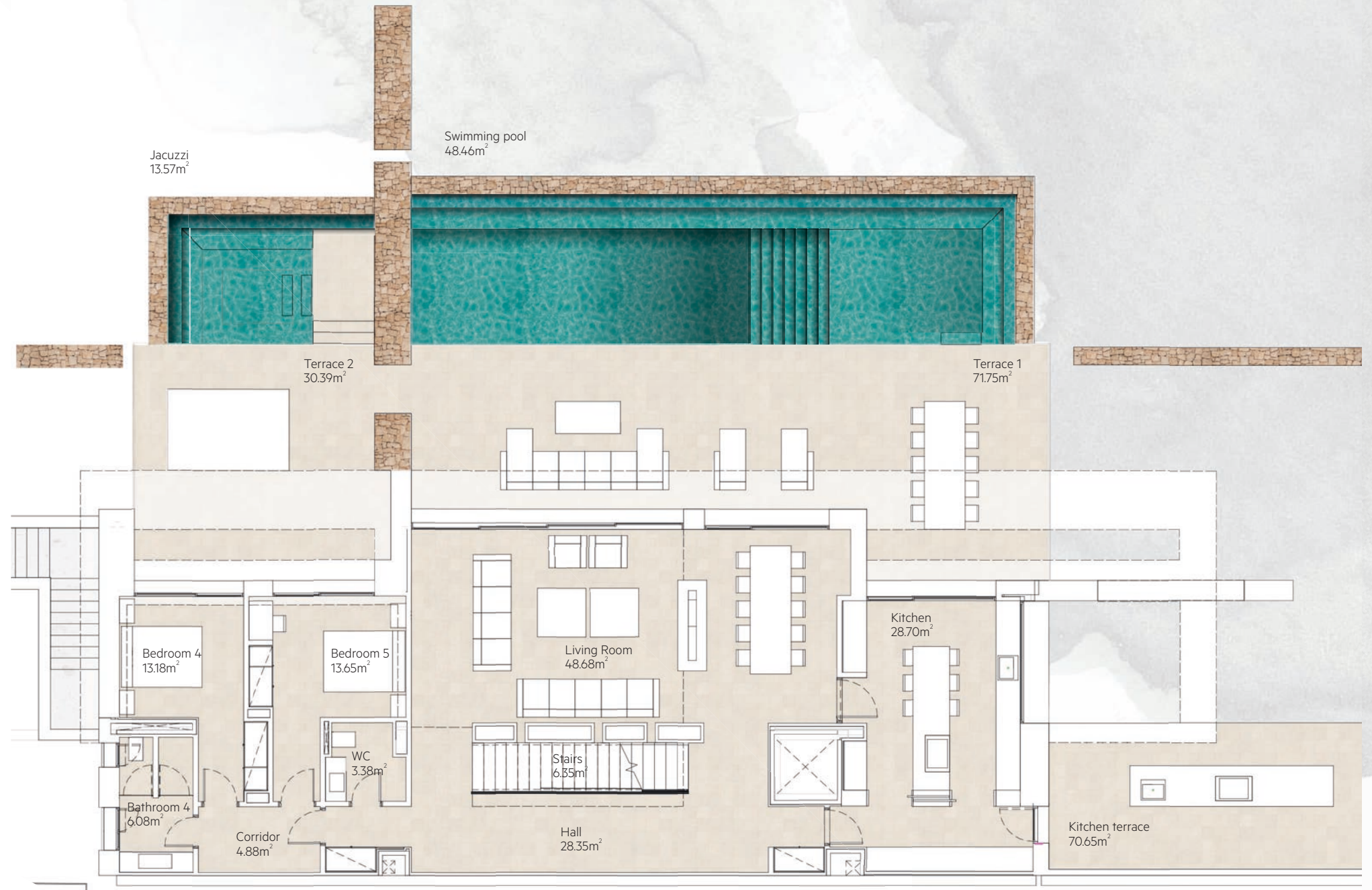
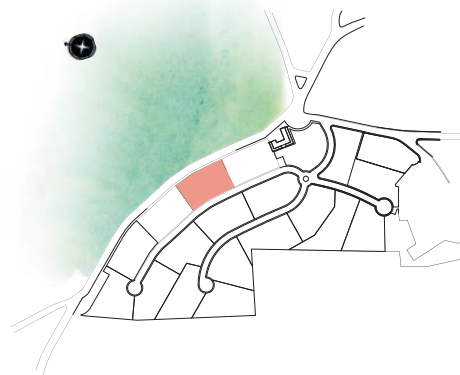


CORALLISA

SIGNATURE HOMES IBIZA

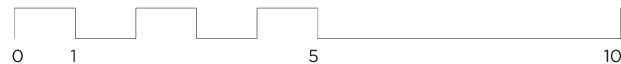
VILLA 3 GROUND FLOOR

Plot surface	1.504,53 sqm
Basement	170,94 sqm
Ground Floor	196,24 sqm
First Floor	158,87 sqm
Total Interior	526,05 sqm
Covered Terrace	55,91 sqm
Uncovered Terrace	116,88 sqm
Total Exterior	172,79 sqm
Total Interior & Exterior	698,84 sqm



Project developed by:
CORALLISA 2019 PRIME DEVELOPMENT

The floor plan above is not final as it has been designed in accordance with the Building Execution Project and, consequently, CORALLISA 2019 PRIME DEVELOPMENT reserves the right to include whatever changes due to technical and/or legal imperatives required by any public Administration or Agency. These changes, in any case, will be in accordance with the progress of the construction work. The accessory elements (for example, including the kitchen) are merely for illustrative purposes. The rotation sense of doors and the distribution of sanitary fittings are not binding. The surface areas shown are approximate and, may be altered for technical and/or legal reasons in the course of the construction work.





CORALLISA

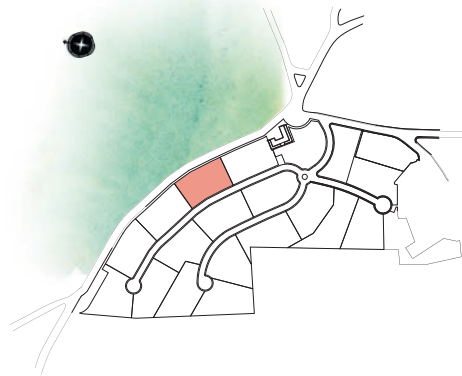
SIGNATURE HOMES IBIZA

VILLA 3 FIRST FLOOR

Plot surface	1.504,53 sqm
Basement	170,94 sqm
Ground Floor	196,24 sqm
First Floor	158,87 sqm
Total Interior	526,05 sqm

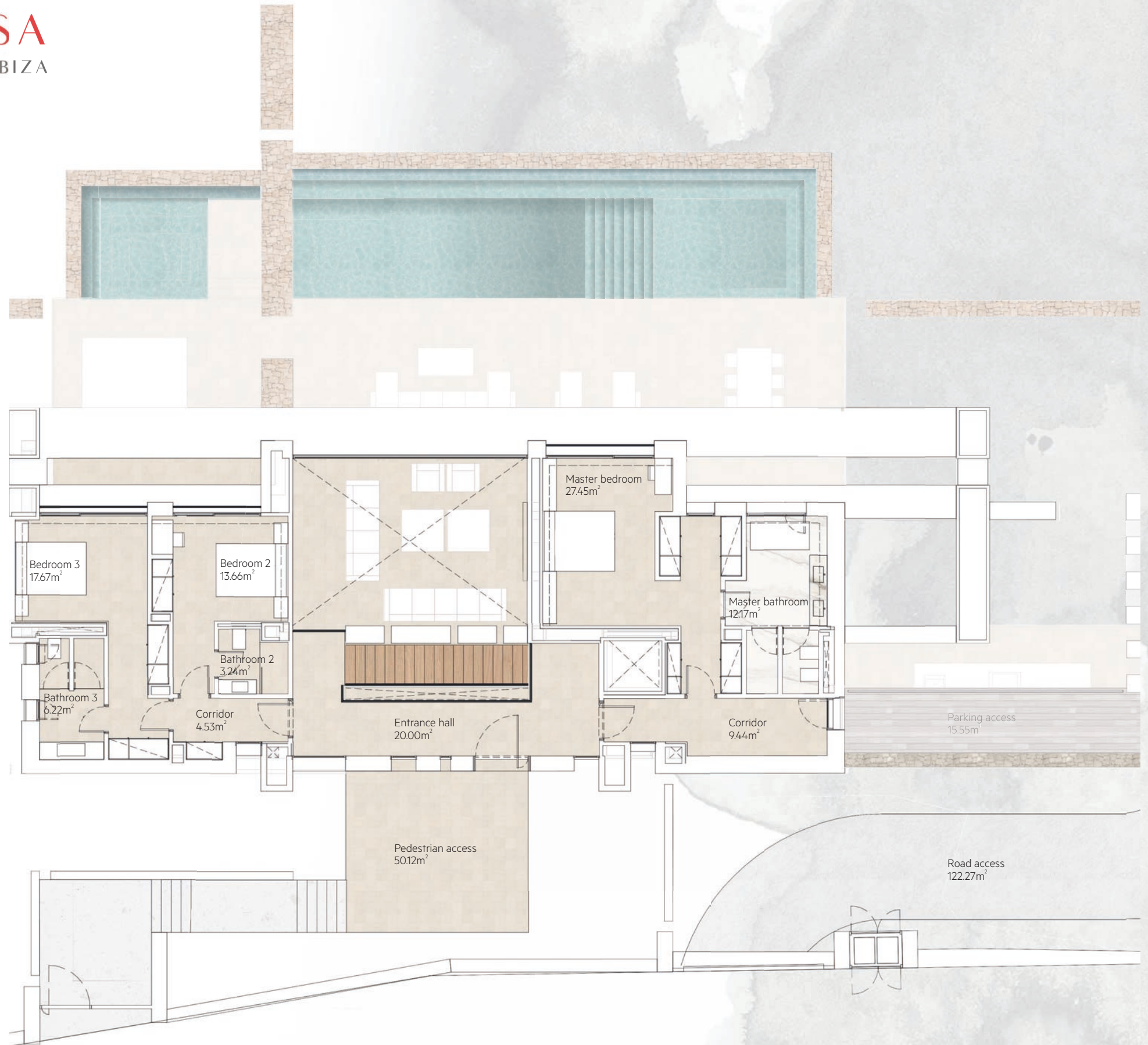
Covered Terrace	55,91 sqm
Uncovered Terrace	116,88 sqm
Total Exterior	172,79 sqm

Total Interior & Exterior
698,84 sqm



Project developed by:
CORALLISA 2019 PRIME DEVELOPMENT

The floor plan above is not final as it has been designed in accordance with the Building Execution Project and, consequently, CORALLISA 2019 PRIME DEVELOPMENT reserves the right to include whatever changes due to technical and/or legal imperatives required by any public Administration or Agency. These changes, in any case, will be in accordance with the progress of the construction work. The accessory elements (for example, including the kitchen) are merely for illustrative purposes. The rotation sense of doors and the distribution of sanitary fittings are not binding. The surface areas shown are approximate and, may be altered for technical and/or legal reasons in the course of the construction work.





CORALLISA

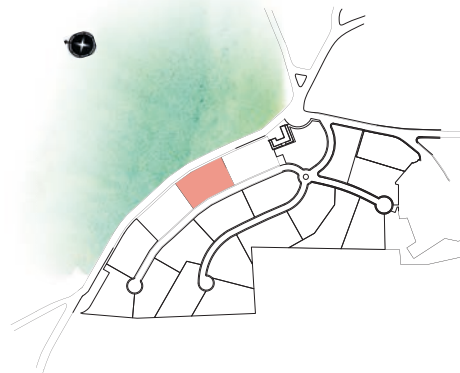
SIGNATURE HOMES IBIZA

VILLA 3 BASEMENT

Plot surface	1.504,53 sqm
Basement	170,94 sqm
Ground Floor	196,24 sqm
First Floor	158,87 sqm
Total Interior	526,05 sqm

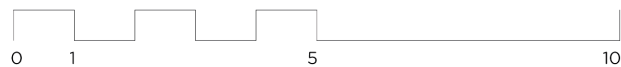
Covered Terrace	55,91 sqm
Uncovered Terrace	116,88 sqm
Total Exterior	172,79 sqm

Total Interior & Exterior
698,84 sqm



Project developed by:
CORALLISA 2019 PRIME DEVELOPMENT

The floor plan above is not final as it has been designed in accordance with the Building Execution Project and, consequently, CORALLISA 2019 PRIME DEVELOPMENT reserves the right to include whatever changes due to technical and/or legal imperatives required by any public Administration or Agency. These changes, in any case, will be in accordance with the progress of the construction work. The accessory elements (for example, including the kitchen) are merely for illustrative purposes. The rotation sense of doors and the distribution of sanitary fittings are not binding. The surface areas shown are approximate and, may be altered for technical and/or legal reasons in the course of the construction work.



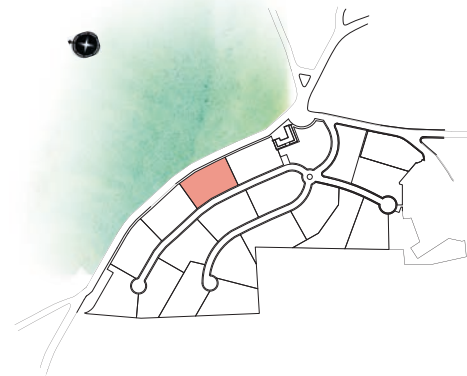


CORALLISA

SIGNATURE HOMES IBIZA

VILLA 3 ELEVATION

Plot surface	1.504,53 sqm
Basement	170,94 sqm
Ground Floor	196,24 sqm
First Floor	158,87 sqm
Total Interior	526,05 sqm
Covered Terrace	55,91 sqm
Uncovered Terrace	116,88 sqm
Total Exterior	172,79 sqm
Total Interior & Exterior	698,84 sqm



Project developed by:
CORALLISA 2019 PRIME DEVELOPMENT

The floor plan above is not final as it has been designed in accordance with the Building Execution Project and, consequently, CORALLISA 2019 PRIME DEVELOPMENT reserves the right to include whatever changes due to technical and/or legal imperatives required by any public Administration or Agency. These changes, in any case, will be in accordance with the progress of the construction work. The accessory elements (for example, including the kitchen) are merely for illustrative purposes. The rotation sense of doors and the distribution of sanitary fittings are not binding. The surface areas shown are approximate and, may be altered for technical and/or legal reasons in the course of the construction work.

