

MAREIN NATURA

NUEVA ANDALUCÍA · MARBELLA



Non-binding figurative image

Quality Statement

CONSTRUCTION SPECIFICATIONS

MAREIN NATURA - LAURUS

FOUNDATIONS AND STRUCTURE

Foundation using reinforced concrete slab, according to data from the geotechnical study, complying with CTE-DB-SE-C regulation specification. Where needed, concrete walls in the basement walls. Structure using bidirectional slabs and reinforced concrete slabs. All under compliance with current DB-SE and EHE standards.

ROOF

Sloped roof, waterproofed and thermally insulated, finished with plain roof tiles.

WATERPROOFING

Roofs and terraces are waterproofed by welded asphalt sheet installed in compliance with DB-HS standard building regulation.

Basement walls, when existing, will be externally waterproofed and fitted with perimetral drainage.

COATINGS

Exterior: Smooth finish and painted, mortar render and decorative tile insertions.

Interior: Taped, joined and painted plasterboard on walls and ceilings.

ISOLATION

Thermal and acoustic insulation by mineral wool on roof cavity. Thermal and acoustic insulation by semi-rigid mineral wool in façade wall cavities. Additionally, acoustic insulation is fitted between the house rooms, by adding mineral wool to the house partitions. In compliance with current DB-HE and DB-HR.

FAÇADES

Cavity walls formed by external sheet of perforated bricks rough rendered inside with hydrophobic mortar, air cavity and self-supporting plasterboard system formed by 15 mm plaster boards on galvanized metal frames, with rock wool as thermal / acoustic insulation according to CTE-DB-HE Energy saving and CTE-DB-HS Health as Safety regulations.

PARTITIONS

Plasterboard system partition with Rock Wool soundproofing inside, water-repellent plasterboard panels are used in wet rooms. Made according to the guidelines of the CTE-DB-HE regulations. Energy saving; UNE 102040 IN, assembly of plasterboard partitions with metal structure.



Non-binding figurative image. Optional decoration proposal.



Non-binding figurative image. Optional decoration proposal.

QUALITIES

MAREIN NATURA-LAURUS

FLOOR AND WALL TILES: RECTIFIED PORCELAIN

Solado interior y exterior Roadstone Linen 90x90 cm natural stone look rectified porcelain tiles. C3 slip resistant category in bathrooms and exterior areas.

Secondary baths are tiled using the same porcelain tile as for the flooring, on shower perimeter.

On main and secondary bedrooms Wood looking rectified porcelain Origin Umber, 22,5 x 180 cm as per below image.



Roadstone Linen 90x90 cm



Origin Umber 22,5 x 180 cm

In the main bathroom, a box is designed for the shower and bathtub area, fully tiled and with a great visual effect, with large-format rectified porcelain tiles with a travertine-effect finish.



Travertino Grey 100x300 cm

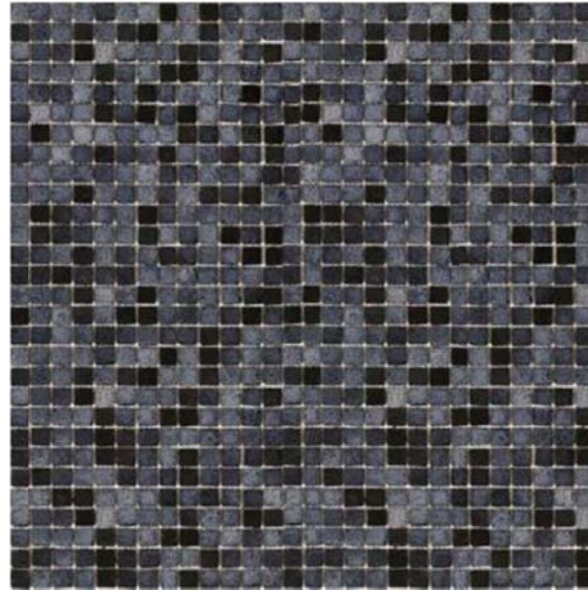


Non-binding figurative image. Optional decoration proposal.



Non-binding figurative image. Optional decoration proposal.

Pool. Pool border is made out of the same tiles use don terraces, obtaining a continuity effect. The pool is tiled with vitreous mosaic in gray and black tones.



Non-binding figurative image. Optional decoration proposal.

GLASS

Double glazing in all exterior joinery. Laminated safety glass on the ground floor.

JOINERY

Interior: 2.40 m high plain wooden doors, white lacquered, fitted with hidden hinges, magnetic latch and stainless-steel 1st quality handle. Entrance door made of steel core and noble wood skin weather resistant treated, with lock and safety handle.

Fully distributed walk in closet at master bedroom with LED lighting. Built-in closet with floor-to-ceiling doors in the rest of the bedrooms, internally organized with a functional distribution of shelves, hanging bars and drawers.

Exterior: Technal, high-quality extruded aluminum with thermal breaks joinery. With the most advanced technologies in the sector and having numerous tests and certificates guaranteeing it. Offering the highest standards on safety and reliability. It will be provided with air intake openings for ventilation.



Non-binding figurative image. Optional decoration proposal.

KITCHEN

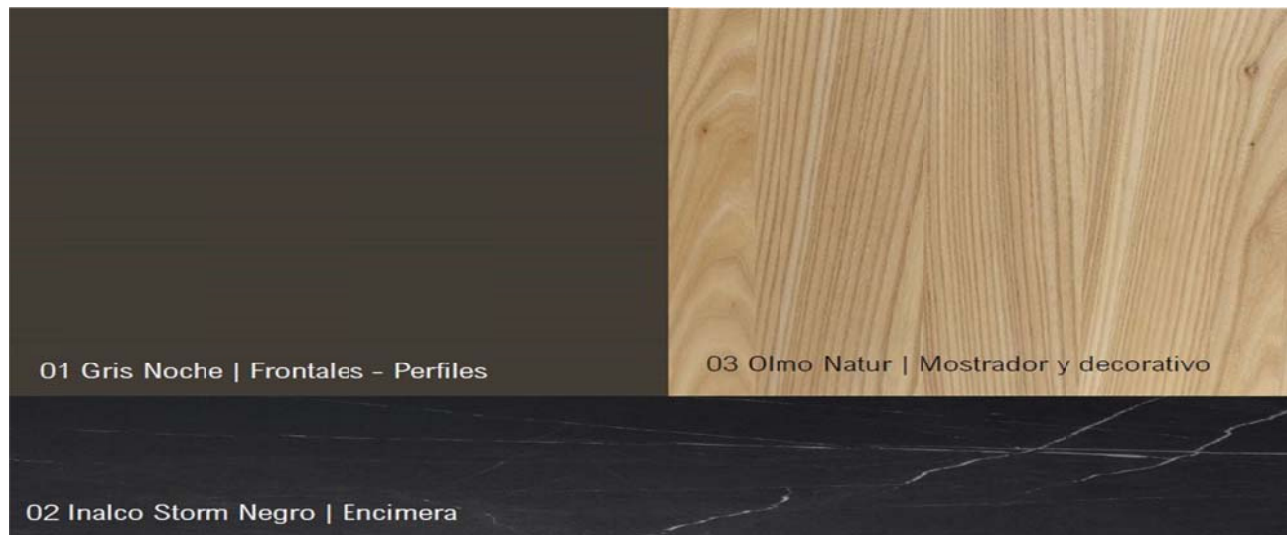
KITCHEN FURNITURE

Complete design kitchen, from the **Dica** brand or similar, equipped with **Neff** appliances. The matt lacquered fronts in night gray, extremely resistant and very easy to clean and hygienic, have been combined with the Olmo Natur color shelving and countertop bar.



Non-binding figurative image. Optional decoration proposal.

Large-format porcelain countertop in Storm Black color, perfectly combines the great resistance of porcelain with the design of kitchen furniture, providing exclusivity and elegance.



APPLIANCES

Neff, a German brand of household appliances, experts in the sector and with a high quality customer service.

Set of two integrated refrigerator - freezer and dishwasher appliances.

Oven and microwave column. Induction hob with an easy-to-clean integrated cooktop extractor and an elegant design.

Removable stainless steel sink and tap.



OTHER EQUIPMENT

ELECTRICAL INSTALLATION

Electrical network planned according to the installed power, with top quality mechanisms with white shell or similar.

Telephone and television points in all bedrooms, living room and kitchen.

Installation of video intercom.

CLIMATIZATION AND CONFORT

Air conditioning with cold-heat duct system, thermostat and independent air conditioning control in each room of the house.

Underfloor heating in all house rooms, by water system, except for master and secondary bathrooms that will be electrical system.

Generation of hot water for consumption and underfloor heating through an Aerothermal system, which guarantees the highest efficiency by reducing the energy consumption of the home.

SMART HOME

Home automation installation with leader in control systems and home automation, or similar. The home automation system will be controlled through an Apple iPad-Wi-Fi 32GB, will have control over curtain / blind motors, lighting and alarm integration, ready to be expanded with upgrade function packages according to customer preferences.

SWIMMING POOL

53 m² water surface with shallow area for possible placement of terrace furniture and deep swimming area. Interior ceramic tile finish (Gresite). Saltwater pool with LED spotlights.

FENCING

Street fence 1.30 m wall made of concrete blocks rendered and painted in white. Over it and up to 2.00 m height metal fence according to design.

Boundaries with other plots, 1.80 m wall made of concrete blocks rendered and painted in white.

BASEMENT

The basement option will be finished "raw", that is, without terminations or finishes except for the garage, toilet, stairs and utility room that will be finished. It will have the necessary pre-installations for the electricity, water and air conditioning supply. The basement has natural lighting and ventilation. Garage will be equipped with sectional door.

INTERIOR DESIGN (OPTIONAL)

The client has the option of hiring an interior designer of recognized prestige in Marbella, specialized in residential projects. Its versatility and innate style will give each space of the villa a unique touch. It is accompanied by the present report of qualities proposed for interior design, which is reflected in the interior images of this villa.

The images shown here are part of the optional interior design proposal.



Non-binding figurative image. Optional decoration proposal.

OUTDOORS-LANDSCAPE

The outdoor areas of each Villa - Marein Natura have been carefully studied thinking about the combination of its special architectural design as each house is projected on a single floor, with its own landscaping and ecological garden so that you can enjoy the freshness of nature , you can cook with your own ingredients and food, perceiving the aromatic species that will characterize your home, while enjoying the maximum use by having large terraces, garden areas, swimming pool and chill out area with winter fire.



Non-binding figurative image. Optional decoration proposal.

Each house has its own landscaping project and an ecological garden with a cultivation area of approx. 36 m2, landscaped areas with grass with automatic irrigation installation with diffusers, as well as pre-installation of garden lighting so that the client in the future can customize it to their liking.



Non-binding figurative image. Optional decoration proposal.



Non-binding figurative image. Optional decoration proposal.