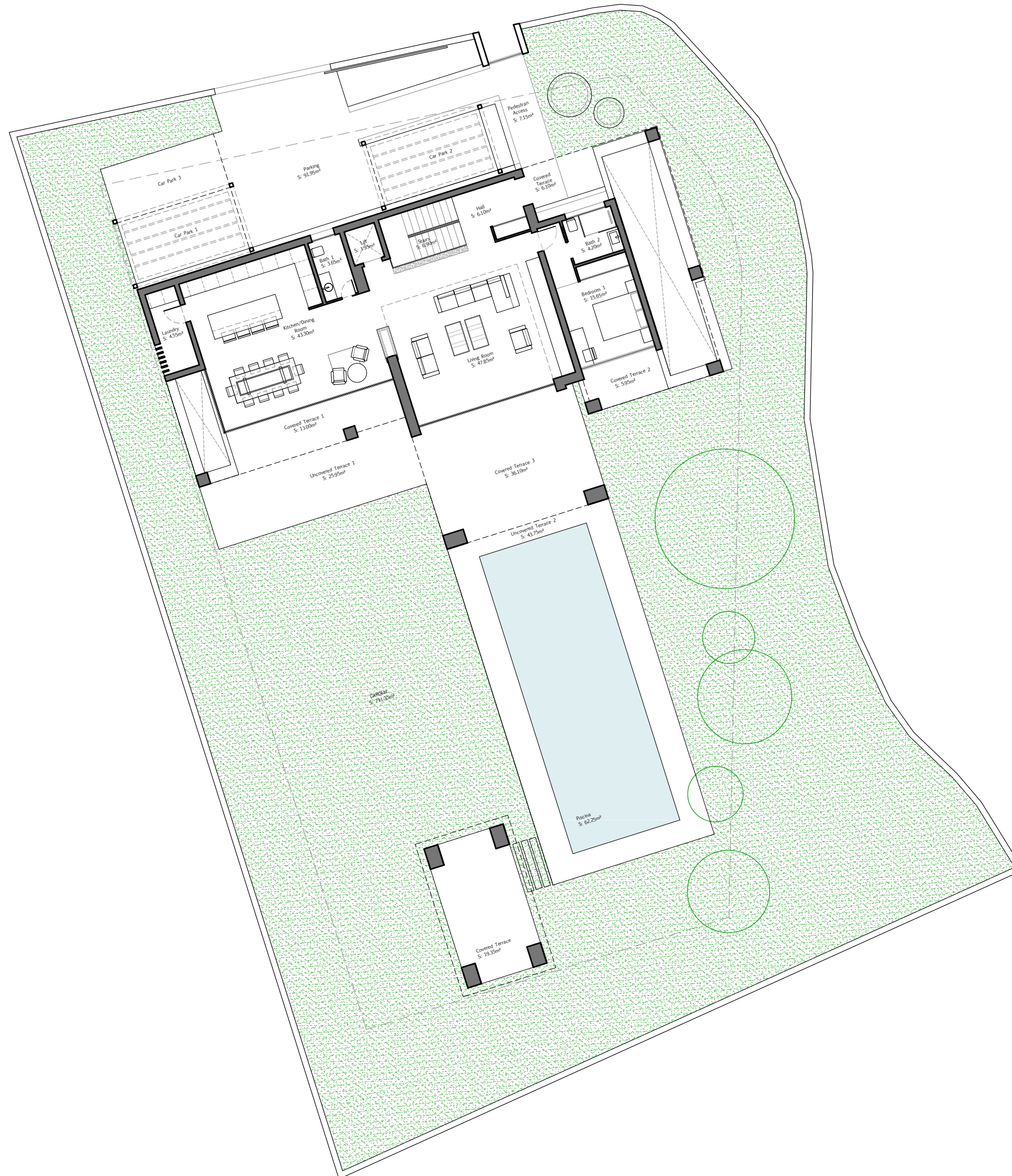


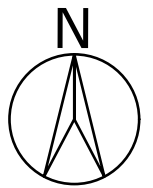
# VILLA ATALAYA BANUS

PLOT 1.251,60m<sup>2</sup>



## BUILT SURFACES

Basement	245.30m <sup>2</sup>
Ground Floor	350.00m <sup>2</sup>
First Floor	184.25m <sup>2</sup>
Solarium	115.15m <sup>2</sup>
<b>TOTAL</b>	<b>894.70m<sup>2</sup></b>

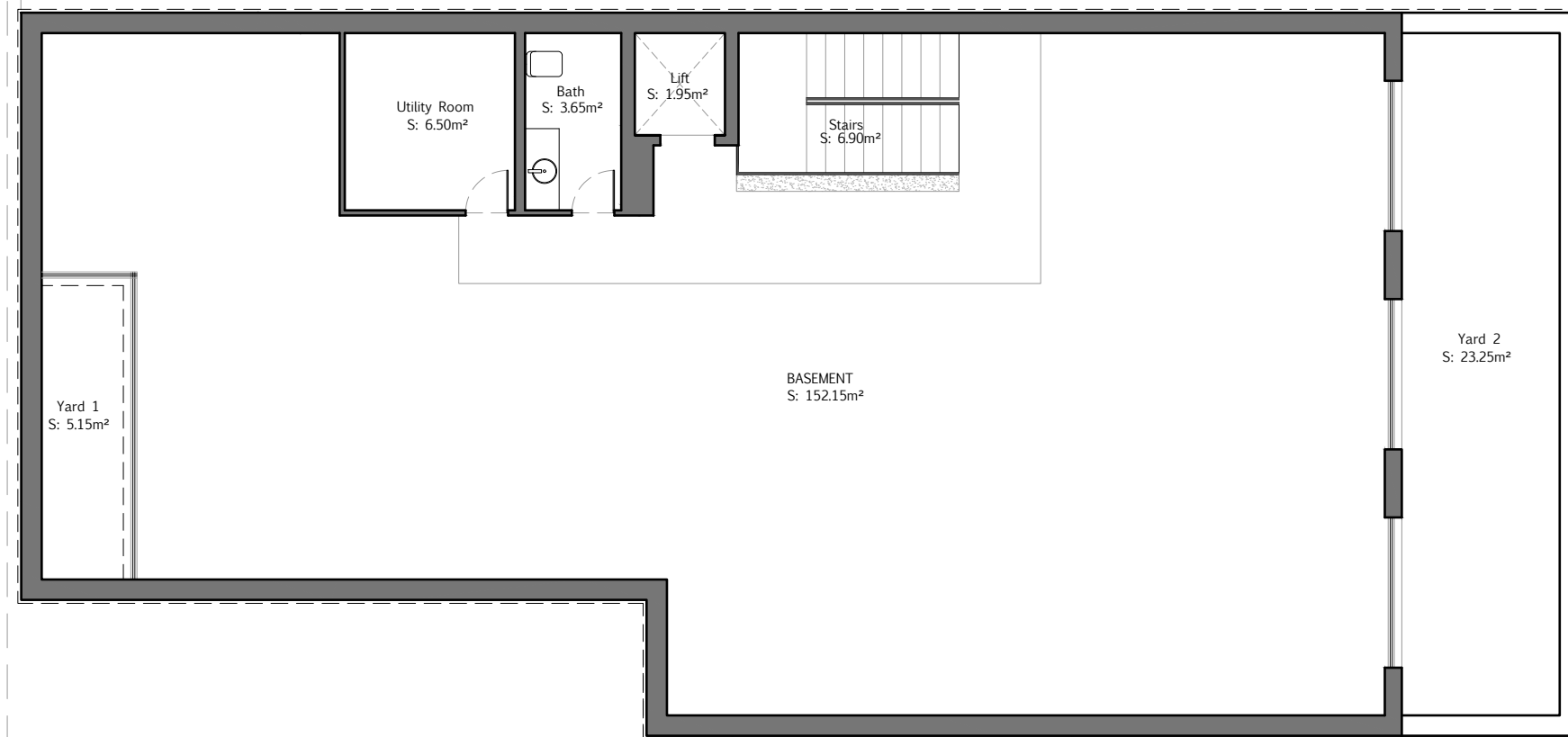
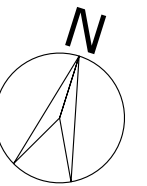


# VILLA ATALAYA BANUS

## BASEMENT

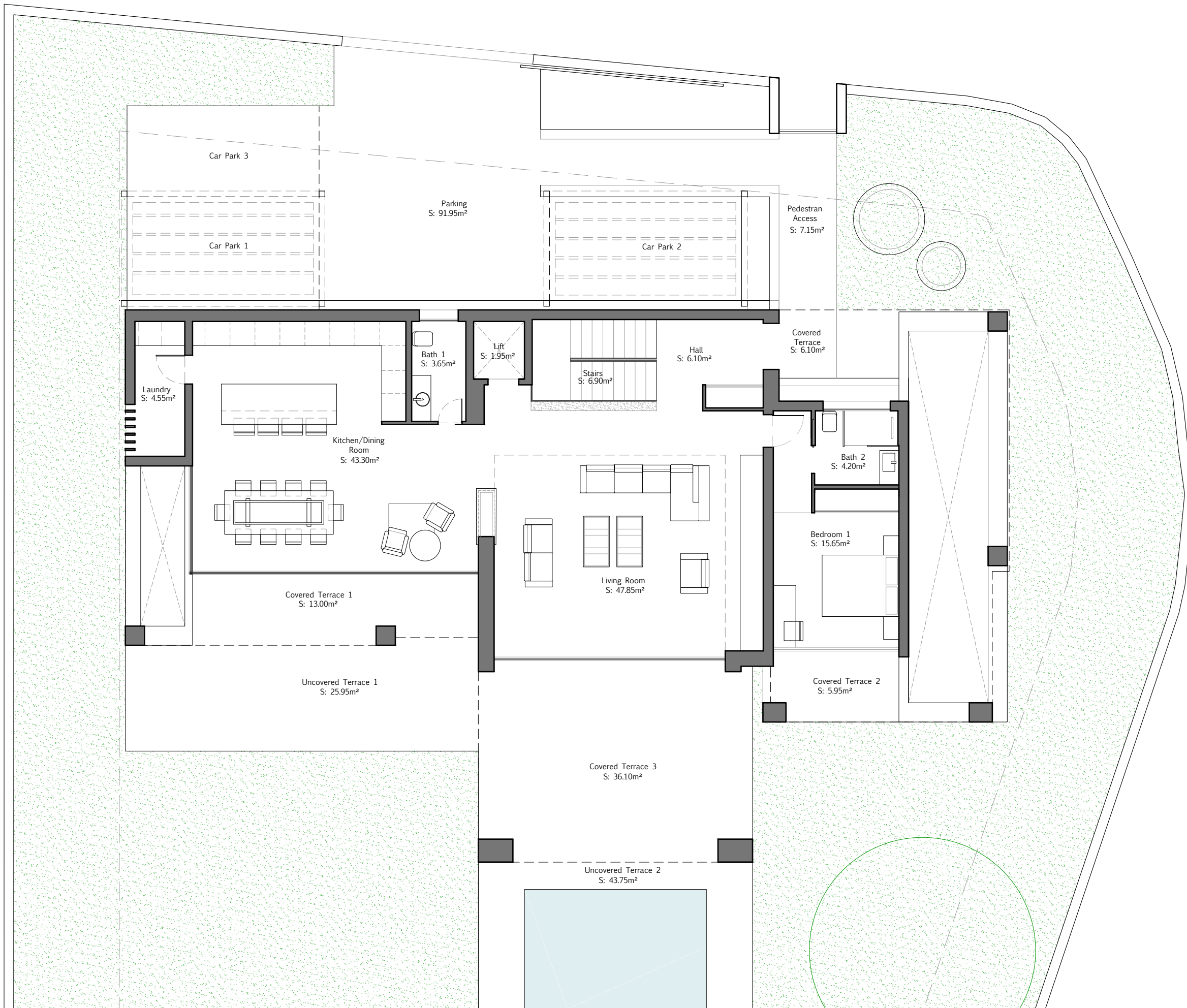
### BUILT SURFACES

Basement	190.30m <sup>2</sup>
Backyards	55.00m <sup>2</sup>
<b>TOTAL</b>	<b>245.30m<sup>2</sup></b>



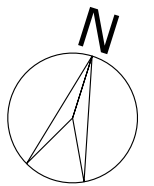
# VILLA ATALAYA BANUS

## GROUND FLOOR



### BUILT SURFACES

Ground Floor	154.60m <sup>2</sup>
Terrace	133.15m <sup>2</sup>
Pool	62.25m <sup>2</sup>
<b>TOTAL</b>	<b>350.00m<sup>2</sup></b>

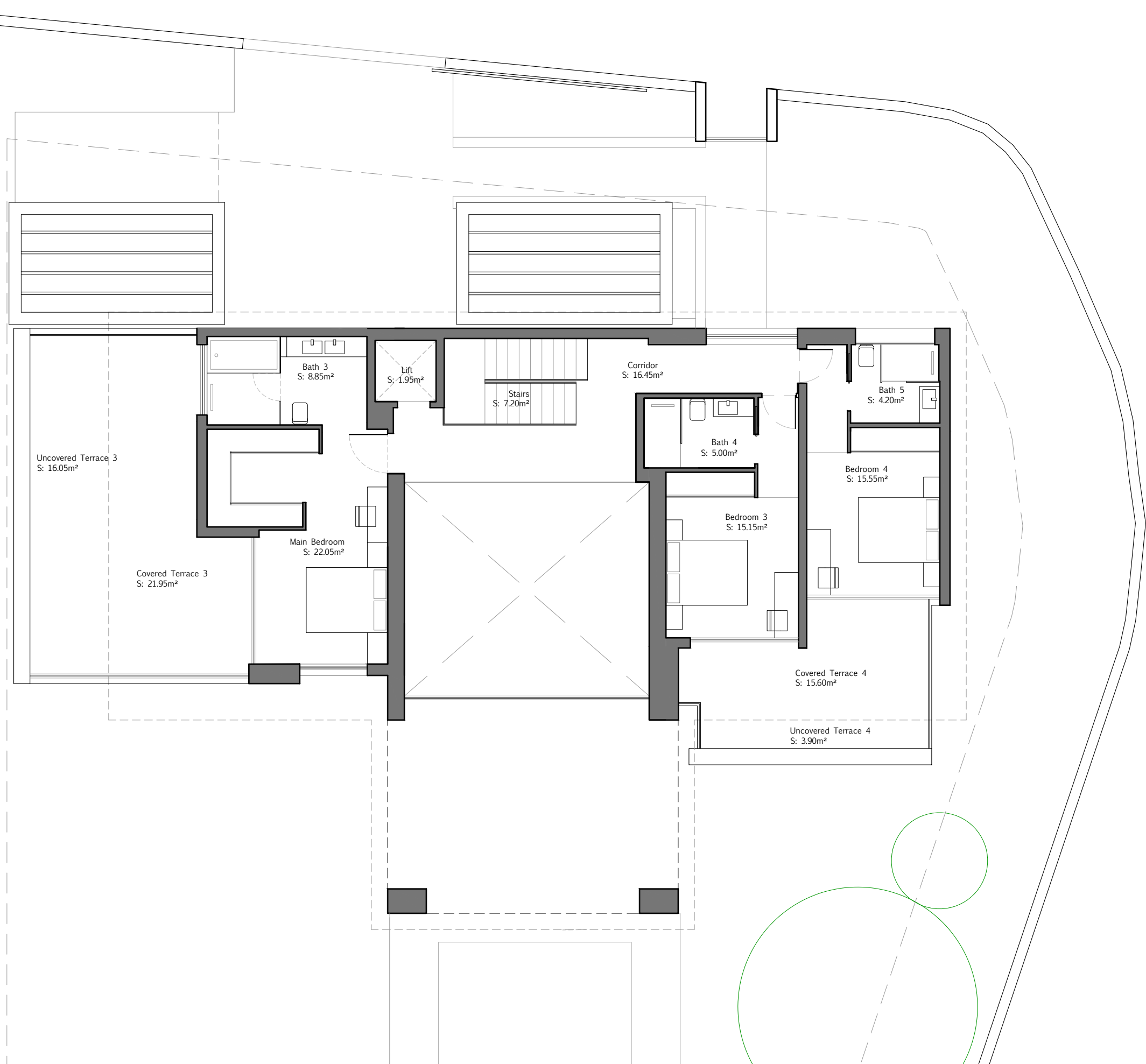
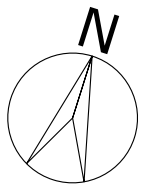


# VILLA ATALAYA BANUS

## FIRST FLOOR

### BUILT SURFACES

First Floor	118.00m <sup>2</sup>
Terrace	66.25m <sup>2</sup>
<b>TOTAL</b>	<b>184.25m<sup>2</sup></b>



# VILLA ATALAYA BANUS

## SOLARIUM

### BUILT SURFACES

Stairs	15.75m <sup>2</sup>
Solarium	99.40m <sup>2</sup>
<b>TOTAL</b>	<b>115.15m<sup>2</sup></b>

