

# **SPECIFICATIONS**

Accomplishment Project: Torre del Río 1.6  
November 2019





**1. PROPERTIES**

Tiling and flooring  
Bathroom units and taps  
Suspended ceilings  
Metal and woodwork

**2. COMMUNITY AREAS**

Hallways and  
landings  
Spa  
Gym  
Swimming-pools  
Coworking area  
Garage

**3. FACADES**

Materials and systems

**4. SERVICES**

Entertainment and health

**5. SYSTEMS**

Home automation  
HVAC systems and  
electricity



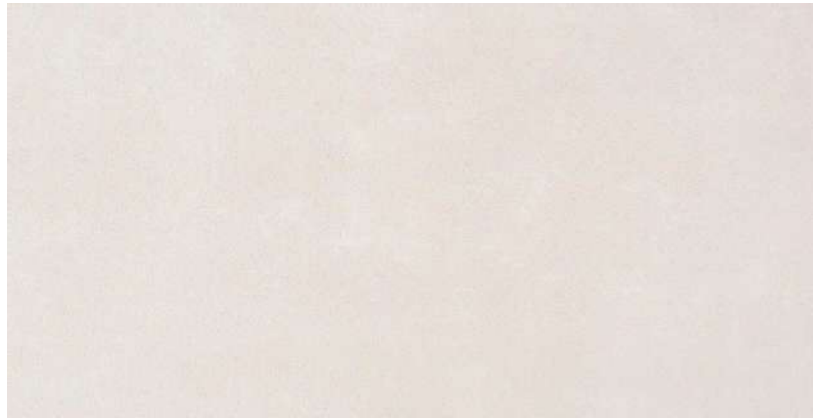
# 1 Properties

---



FLOORING

INTERIOR FLOORING:  
RECTIFIED PORCELAIN STONEWARE "CONCEPT NATURAL" BY AZUVI, 120X60 CM CLASS C1 (C2 IN WET ROOMS)



EXTERIOR FLOORING:  
RECTIFIED PORCELAIN STONEWARE BY AZUVI, 120X60 CMS, CLASS C3. CONTINUITY OF MATERIALS FROM INTERIOR AREAS TO TERRACE EXTERIOR AREAS.  
TECHNICAL FLOORING RAISED ON PLOTS



BATHROOM FINISHES

PROPERTIES 16-20 ON UPPER FLOORS:  
CLEAR CORRUGATED GLASS SHOWER SCREENS



IMAGE OF BATHROOMS 16-20 ON UPPER FLOORS

BATHTUB TILING:

PROPERTIES 3-15 ON UPPER FLOORS: COFFEE CREAM MARBLE

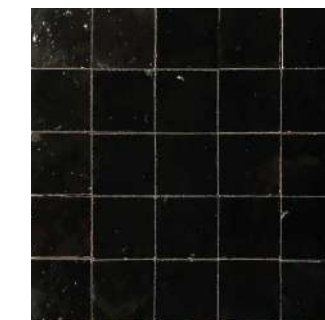


PROPERTIES 16-20 ON UPPER FLOORS: TRAVERTINE MARBLE



CONTINUED INTERIOR-EXTERIOR FLOORING

WALL TILING:



RECT. PORCELAIN STONEWARE "CONCEPT NATURAL" BY AZUVI, 120X60



IMITATION STUCCO PAINT

MOSAIC TILING 10X10 IN PROPERTIES 3-15 ON UPPER FLOORS



# 1 PROPERTIES

Bathroom units and taps



EMBEDDED FLUSH SYSTEM  
DULL BLACK PUSHBUTTON

COLOURS AVAILABLE FOR TAPS:



GLOSSY CHROME   BRUSHED BLACK   BRUSHED GOLD



ZUCCHETTI PAN BIDET SINGLE-LEVER TAP



REFERENCE IMAGE: VILLEROY & BOCH'S AVENTO MODEL



VILLEROY & BOCH'S AVENTO SUSPENDED BATHROOM UNITS



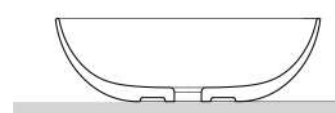
PROPERTIES  
Bathroom units and taps



REFERENCE IMAGE: CERÁMICAS NIC  
WASHROOMS:  
NIC OVVIO BASIN ON A SOLID SURFACE WITH STORAGE UNIT UNDERNEATH



REFERENCE IMAGE: CERÁMICAS NIC  
BATHROOMS:  
NIC CIOTOLA BASIN ON SOLID SURFACE WITH STORAGE UNIT UNDERNEATH



TAP AVAILABLE COLOURS:



GLOSSY CHROME



BRUSHED BLACK



BRUSHED GOLD

PAN DE ZUCCHETTI TAPS



BASINS WITH SOLID SURFACE WITH STORAGE UNIT UNDERNEATH (PROPERTIES 16-21 ON UPPER FLOORS)

# 1 PROPERTIES

## Bathroom units and taps

SEAMLESS SHOWER BASE INTEGRATED IN THE FLOORING IN ALL PROPERTIES



THERMOSTATIC SHOWER MIXER TAPS AND CEILING SHOWER HEAD, 30 CM, ZUCCHETTI PAN

COLOURS AVAILABLE FOR TAPS:



GLOSSY  
CHROME



BRUSHED  
BLACK



BRUSHED  
GOLD



REFERENCE IMAGE: SEAMLESS SHOWER BASE EMBEDDED IN THE FLOORING

ZUCCHETTI ZAD ACCESSORIES



ZUCCHETTI PAN WALL SINGLE-LEVER TAPS  
IN BATHTUBS

TAP AVAILABLE COLOURS:



GLOSSY  
CHROME



BRUSHED  
BLACK



BRUSHED  
GOLD



"CLASSIC DUO" BY KALDEWEI STAINLESS STEEL BATHTUB, SIZES  
1600X700, 1700X700 AND 1800X800 MM



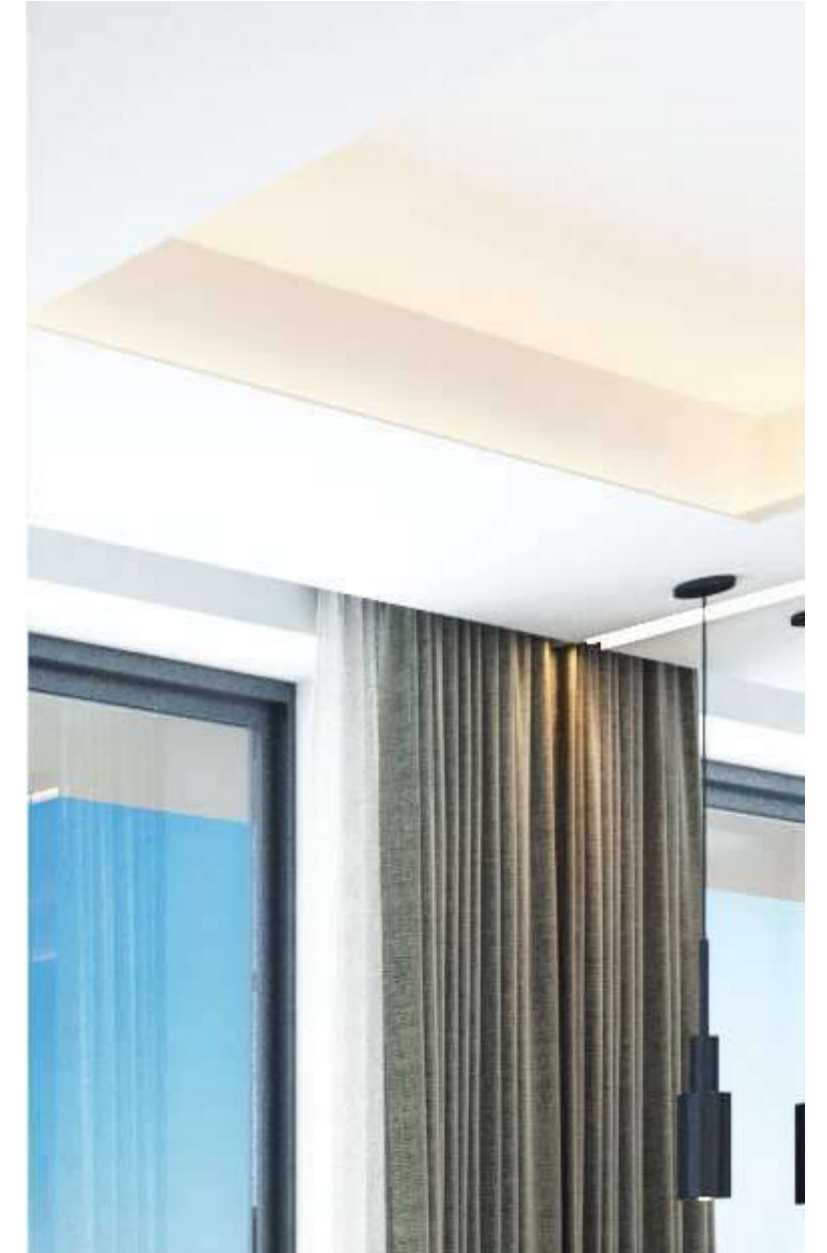
"SANIFORM PLUS" BY KALDEWEI STAINLESS STEEL BATHTUB, 1500X700 MM



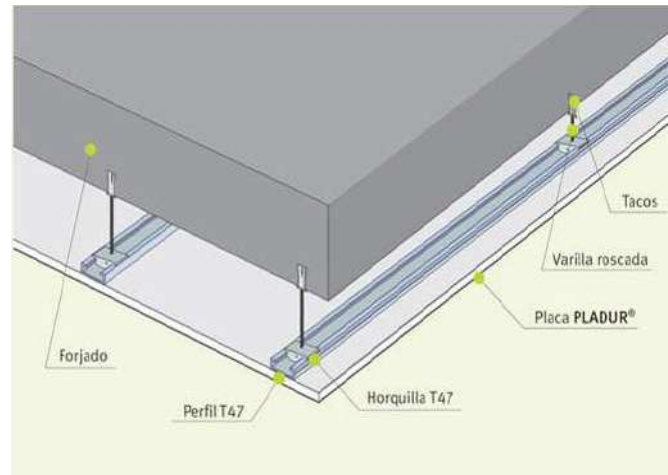
# 1

## PROPERTIES

### Suspended ceilings



THE PROPERTIES' SUSPENDED CEILINGS ARE MADE OF PLASTERBOARD WITH PERIMETRAL CAVITIES TO ACCOMMODATE LIGHT FITTINGS AND ROLL-UP BLINDS. MAN HOLES WILL BE INSTALLED WHERE APPROPRIATE.



Interior and exterior metal and woodwork

INTERIOR DOORS ARE LAMINATED IN STAINED OAK WOOD . THEY EXTEND ALL THE WAY TO THE CEILING.

FLOOR TO CEILING MODULAR WARDROBES WITH HINGED DOORS. THEY ARE LAMINATED IN OAK WOOD LIKE THE INTERIOR DOORS. WARDROBE INTERIORS EMPLOY HIGH-PRESSURE LAMINATED MATERIAL WITH HANGING BARS, SHELVES, DRAWERS AND SHOE RACKS. RETENTION HINGES. FLOOR TO CEILING MDF OAK LAMINATE FINISHES.

PROPERTY ACCESS DOORS ARE SECURITY DOORS IN A LIGHT OAK FINISH ON THE SIDE LOOKING ONTO THE COMMUNITY AREAS, AND OAK LAMINATED ON THE SIDE OF THE PROPERTY INTERIOR. LACQUERED STEEL RIMS. MULTIPLE-LOCK SYSTEM FOR HIGH SECURITY LEVEL. SECURITY BOLTS AND REINFORCED LOCK, BOTH ADJUSTABLE.

EXTERIOR METALWORK IS MADE OF ANODISED ALUMINIUM WITH THERMAL BREAK. THE DOORS AND WINDOWS ARE SLIDING AND CAN BE RAISED AND HING-OPENED. DOUBLE GLAZING WITH SUN CONTROL LAYER ACCORDING TO ORIENTATION, WITH SERIGRAPHY IN OPAQUE AREAS.

OAK WOOD LAMINATED MODULAR WARDROBES



EXTERIOR METALWORK:

SLIDING DOORS THAT CAN BE RAISED AND HING-OPENED WITH THERMAL BREAK IN ANODISED ALUMINIUM BY BRAND TECHNAL / CORTIZO.

GLASS TYPES:

T6 / 16 / 44.2 SI \_ BEDROOMS  
T8 / 20 AR/ 55.2 SI \_ LIVING ROOMS WITH SEA VIEWS



**2**

# Community Areas

---



# 2

## COMMUNITY AREAS

### LOBBY. FLOORINGS AND FINISHES



IMAGE OF THE HALLWAY ON FLOOR -1



WALL-EMBEDDED POSTBOXES IN STAINLESS STEEL GLOSSY FINISH

#### HALLWAY FINISHES



RECT. PORC. STONEWARE VITRIFIED MOSAIC TILES



HIGH-PRESSURE LAMINATE PORCELAIN STONEWARE



ALUMINIUM ENTRANCE MAT



PORCELAIN STONEWARE WHITE LACQUERED GLASS



IMAGE OF BLOCK ACCESS



COMMUNITY AREAS

HALLWAYS. FLOORING AND FINISHES

EXTRA CLEAR WHITE-LACQUERED GLASS COMBINED WITH HIGHLY-RESISTANT LAMINATED PANELS.  
WHITE-PAINTED PLASTERBOARD CEILINGS.



PORCELANOSA "BOSTON BONE" RECTIFIED  
PORCELAIN STONEWARE IN THE HALLWAYS OF EVERY  
FLOOR AND CERAMIC TILING ON INTERIOR  
STAIRCASES.

# 2 #\UUyV@' °k-° o' SPA

-Ch-k@V#-o'Λk'u=-'o-Vo-o:

COLD STORM: #\Q' dhk'' °=\ ‡ -k' ‡ @=#\Q yk' u=-k' h': "Oy- °° V) ‡ =@- °° =u, °° V) ° h@-uk--' -oo-V#-o



TROPICAL RAIN: o-VoE-ACTIVATING' =\ u dhk'' °=\ ‡ -k' ‡ @=#\Q yk' u=-k' h': ° U"-k °° =u, °° V) PASION FRUIT'-oo-V#-o



ICE FOUNTAIN



THE WALLS AND FLOORS COMBINE NATURAL MATERIALS THAT ARE DAMP RESISTANT AND GUARANTEE OPTIMUM HYGIENE CONDITIONS



RECT. PORC. STONWARE FLOOR



RECT. PORC. STONWARE WALL TILES



HIGH-PRESSURE LAMINATE



PORCELAIN STONWARE WALL TILES



CONTINUED VINYL WALL TILES



VITRIFIED MOSAIC WALL TILES

STEAM BATH PROVIDED WITH FIRE AND PRESSURE SAFETY

THE SAUNA IS FINISHED IN NATURAL FIR WOOD PROVIDED WITH FIRE AND PRESSURE SAFETY

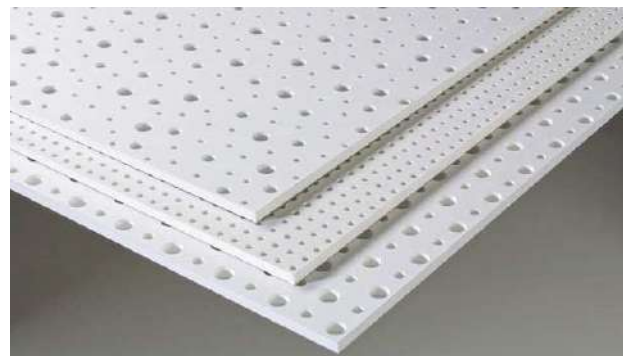
SWIMMING-POOL WITH WATER JET, JACUZZI SEAT, AIR BED AND BUBBLE AREA







THE WALLS AND FLOORS EMPLOY A COMBINATION OF MATERIALS THAT ARE INTENSE-WEAR RESISTANT AND ARE PROVIDED WITH A HIGHLY-EFFECTIVE SOUND ATTENUATION SYSTEM



THE SUSPENDED CEILING IS MADE OF PLASTERBOARD WITH A SOUND ABSORPTION SYSTEM



NON-SLIP SOUND-PROOFED CONTINUED VINYL FLOORING



NATURAL LIGHTING AND EXTERIOR SPACE

# 2

## COMMUNITY AREAS GYM



TRAINING BYCICLE



THREADMILL



CROSS TRAINER (FIXED STEP)



INDOOR CYCLING MACHINE



CHEST PRESS



PULL DOWN MACHINE



MULTIFUNCTIONAL MACHINE



LEG CURL MACHINE



SET OF WEIGHTS WITH  
SUPPORT FRAME





# 2 COMMUNITY AREAS SWIMMING-POOLS

IMAGE OF OUTDOOR OVERFLOW SWIMMING-POOL ON THE SECOND FLOOR. INDOOR HEATED POOL.



IMAGE OF EXTERIOR INFINITY POOL ON PENTHOUSE FLOOR



## FURNISHINGS:



OUTDOOR BASKET SEATS WITH CUSHION



OUTDOOR BASKET TABLE

**UNDER REVIEW**



OUTDOOR SUNBED AND TABLE



OUTDOOR SUNBED AND TABLE



REVERSE HIGH TABLE



TROY WHITE STOOL



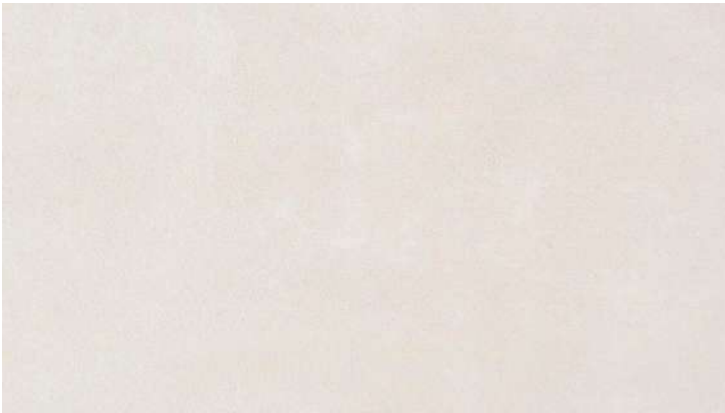
FIBERGLASS OUTDOOR PARASOL



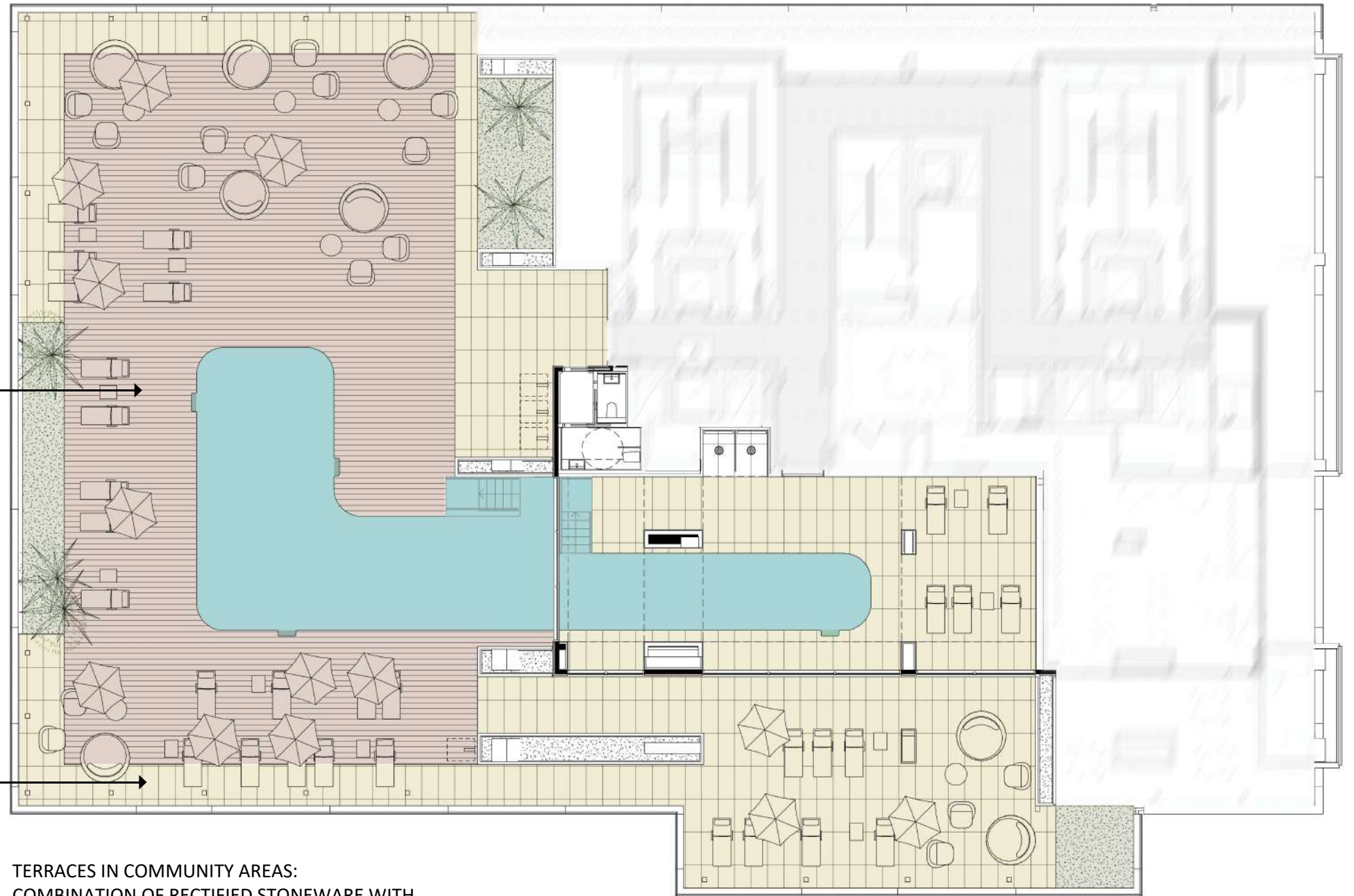




EXTERIOR COMPOSITE LAMINATED FLOORING



ANTI-SLIP RECTIFIED STONEWARE



TERRACES IN COMMUNITY AREAS:  
COMBINATION OF RECTIFIED STONEWARE WITH  
EXTERIOR ALVEOLAR COMPOSITE WOOD SLABS  
INSTALLED ON RAISABLE STRIPS AND FRAMES.  
GROOVED AND BRUSHED FINISH.

# 2

## COMMUNITY AREAS COWORKING

WORK STATION AND MEETING DESK



ERGONOMIC CLASS 2 TEXTILE CHAIRS



SMALL TABLES



COWORKING ROOM WITH SEA VIEW TERRACE

SOUND-ABSORBENT SEATS WITH WORK STATION





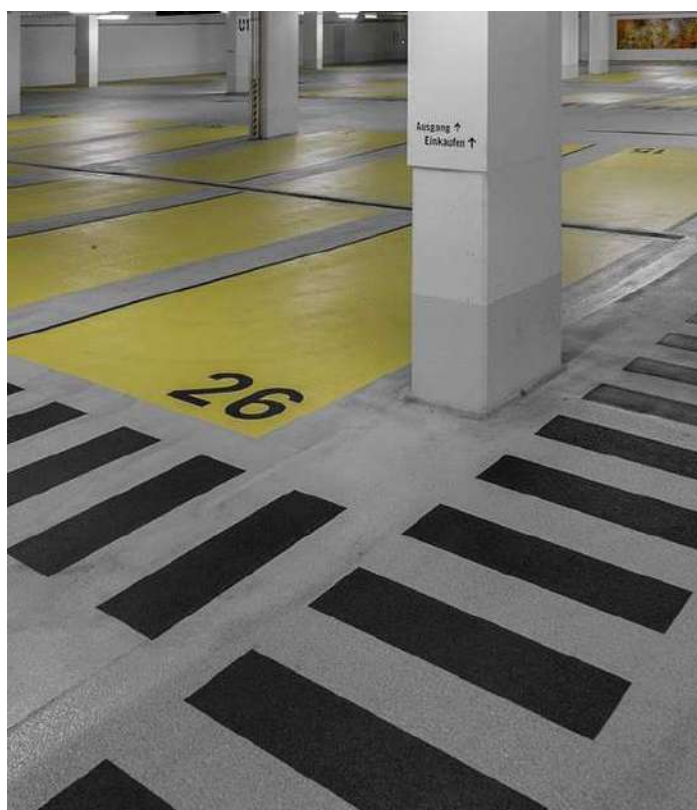
## COMMUNITY AREAS GARAGE

IMAGE OD ACCESS FROM HALLWAY TO GARAGE WITH SIGNALLED ACCESSES



EPOXY RESIN CONTINUOUS FLOORING IN DRIVING AREA (GARAJE) MICROCHINA  
 CERAMIC TILING LIKE THE ONE USED IN STAIRCASES AND CORRIDORS IN  
 STORAGE ROOMS.  
 PLASTIC PAINT IN STORAGE ROOMS, HALLWAYS AND STAIRCASES.  
 SILICATE PAINT IN GARAGES AND EQUIPMENT ROOMS.  
 GARAGE ACCESS AUTOMATIC DOORS .  
 HALLWAY IN LIFT AREA PROVIDED WITH RECTIFIED CERAMIC STONEWARE.  
 THE PARKING AREA IS PROVIDED WITH FIRE EXTINGUISHERS.  
 MINIMUM PARKING SPACE IS 2.50 M X 5.00 M

SIGNALLED PARKING SPACES



REFERENCE IMAGE

PICTOGRAM SIGNALLING



REFERENCE IMAGE



# 3

## Facades

---





TERRACE PROTECTIVE BARANDAS ARE ANCHORED WITH EXTRUDED ANODISED ALUMINIUM AND SAFETY GLASS WITH UPPER HAND RAIL IN STAINLESS STEEL



REFERENCE IMAGE

THE DOUBLE-SKIN INTERIOR FACADE IS FINISHED IN EXTRUDED ALUMINIUM OR CERAMIC PANELS. EXTERIOR METAL WORK IS ANODISED ALUMINIUM WITH THERMAL BREAK. THE WINDOWS ARE PROVIDED WITH A SUN CONTROL LAYER AND A SAFETY DEVICE AT AREAS THAT POSE A FALL OR IMPACT RISK, WHICH ARE PROVIDED WITH SERIGRAPHY IN OPAQUE AREAS.



THE PARAPETS ARE MADE OF DOUBLE-SKIN FACADES WITH SOLID SURFACE OR CERAMIC PANELS WHICH ARE MECHANICALLY ANCHORED TO THE FLOOR SLABS





# 4

## Services

---





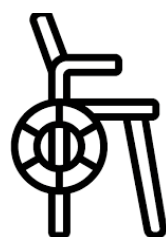
PLAYROOM WITH SPACE FOR GAMES AND STORYTELLING ACTIVITIES. SOUND-ABSORBENT FINISHES AND VINYL FLOORING PROVIDED WITH A WARM FEEL AND PADDING IN THE EVENT OF A FALL.



CINEMA ROOM EQUIPPED WITH A PROJECTOR AND SURROUND SOUND SYSTEM. SOUND-ABSORBENT FINISHES TO GUARANTEE GOOD SOUND.



INDOOR HEATED POOL



LIFEGUARD SERVICE



FIRST RESIDENTIAL BUILDING IN SPAIN THAT IS PROVIDED WITH CARDIAC SUPPORT DEVICE



MEDICAL ROOM WITH FIRST-AID KIT AND SPACE TO PROVIDE FIRST AID



ELECTRIC VEHICLE CHARGING STATION AVAILABLE



GASTROBAR WITH SEA VIEWS



5

# Systems

---

# 5

## SYSTEMS HOME AUTOMATION



### HOME AUTOMATION IN PROPERTIES

#### FREE@HOME ABB SYSTEM

- TOUCH SCREEN
- SMOKE AND WATER ALARM TECHNICAL SYSTEM
- LIGHTING CONTROL (ON/OFF) -BLIND CONTROL
- MOBILE APP

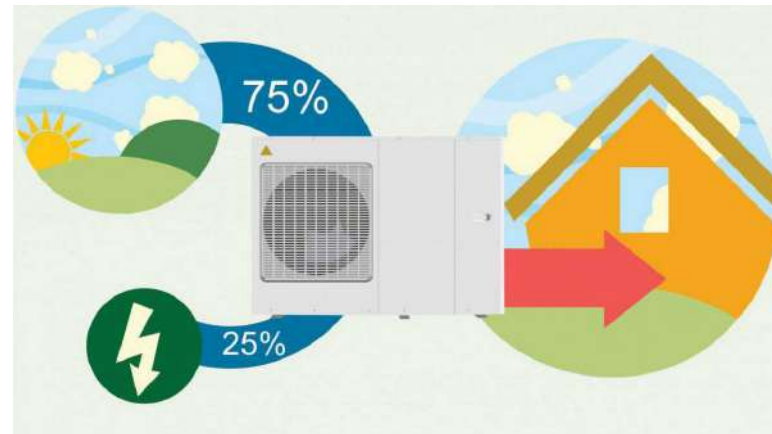




PROPERTY SYSTEMS



AEROTHERMICS IS AN ENVIRONMENTALLY-FRIENDLY ALTERNATIVE THAT PROVIDES HEAT AND AIR-CONDITIONING IN YOUR HOME



UNDERFLOOR HEATING IS A HIGH-PERFORMANCE HEATING SYSTEM WITH LOW CONSUMPTION AND MAXIMUM COMFORT AS IT ALLOWS TO HAVE THE SAME TEMPERATURE IN THE ENTIRE AREA.



ELEGANT APPEARANCE, DISTINGUISHED COLOURS, AND SUBTLE FINISHES COMBINE IN THE SWITCHES PROVIDED BY SIMON'S SERIES 100



HVAC PROVIDED THROUGH AN AEROTHERMAL SYSTEM BY DAIKIN'S ALTHERMA OR AN EQUIVALENT MAKE



UNDERFLOOR HEATING BY UPONOR OR EQUIVALENT MAKE



ELECTRICAL SWITCHES BY SIMON 100 IN WHITE OR BLACK



