

VILLA 2 & 3

BASEMENT FLOOR

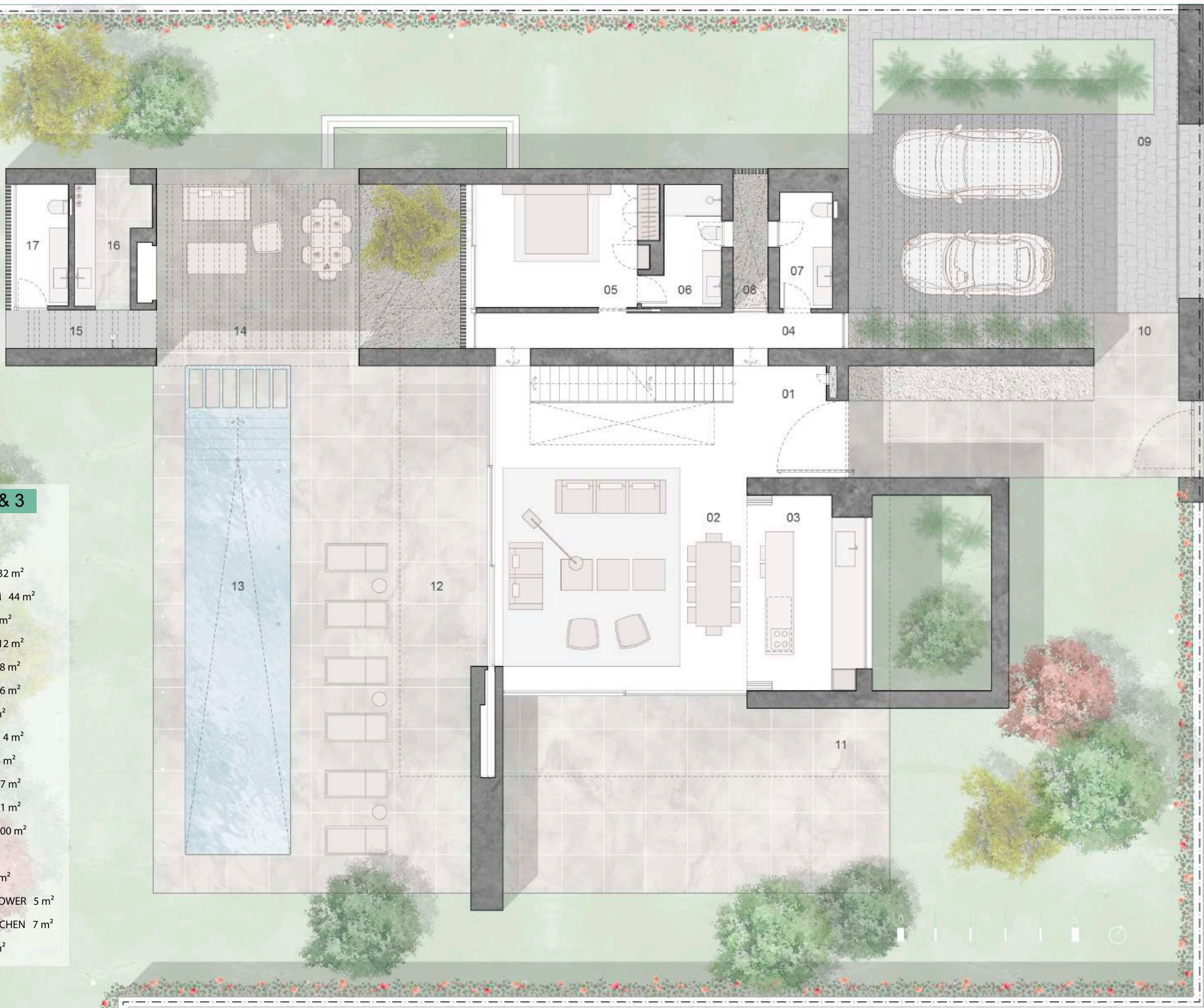
- 01_HALLWAY 1 27 m²
- 02_HALLWAY 2 6 m²
- 03_WINE CELLAR 5 m²
- 04_BEDROOM 25 m²
- 05_BATHROOM 6 m²
- 06_PLAY ROOM 87 m²
- 07_GYM 29 m²
- 08_TOILET 5 m²
- 09_SPA 19 m²
- 10_HAMMAN 8 m²
- 11_SHOWER 5 m²
- 12_LAUNDRY/STORAGE 16 m²
- 13_MACHINERY ROOM 19 m²
- 14_COURTYARD 1 12 m²



VILLA 2 & 3

GROUND FLOOR

- 01_HALLWAY 1 32 m²
- 02_LIVING ROOM 44 m²
- 03_KITCHEN 14 m²
- 04_HALLWAY 2 12 m²
- 05_BEDROOM 18 m²
- 06_BATHROOM 6 m²
- 07_TOILET 1 5 m²
- 08_COURTYARD 4 m²
- 09_CARPOR 54 m²
- 10_TERRACE 1 27 m²
- 11_TERRACE 2 61 m²
- 12_TERRACE 3 100 m²
- 13_POOL 42 m²
- 14_GAZEBO 33 m²
- 15_EXTERIOR SHOWER 5 m²
- 16_EXTERIOR KITCHEN 7 m²
- 17_TOILET 2 5 m²



VILLA 2 & 3

FIRST FLOOR

- 01_HALLWAY 15 m²
- 02_LIVING ROOM 15 m²
- 03_MASTER BEDROOM 22 m²
- 04_MASTER BATHROOM 11 m²
- 05_WARDROBE 7 m²
- 06_BEDROOM 1 15 m²
- 07_BATHROOM 1 4 m²
- 08_BEDROOM 2 15 m²
- 09_BATHROOM 2 4 m²
- 10_TERRACE 1 26 m²
- 11_TERRACE 2 9 m²
- 12_TERRACE 3 8 m²

