

197A- GUADALMINA

BASEMENT OPTION

GROUND FLOOR

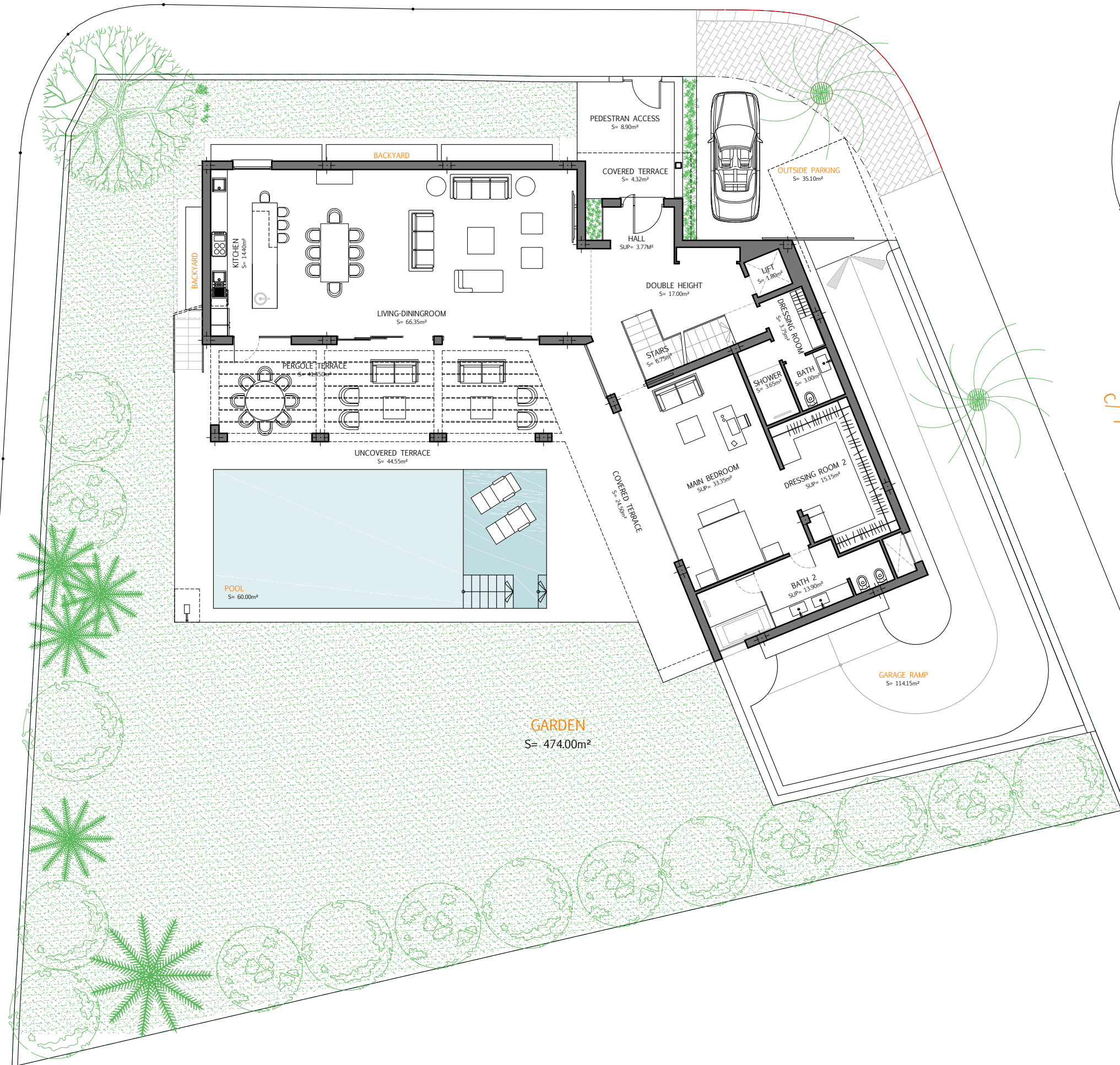
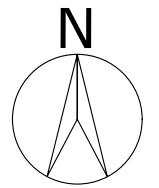
27/07/2020

BUILT SURFACES

Ground Floor	214.50m ²
Terrace	117.05m ²
Pool	60.00m ²
TOTAL	391.55m²

C/ 4-A Urb. Guadalmina Baja

C/ 7 Urb. Guadalmina Baja



GARDEN
S= 474.00m²

GARAGE RAMP
S= 114.15m²

POOL
S= 60.00m²

UNCOVERED TERRACE
S= 44.55m²

PERGOLA TERRACE
S= 4.55m²

LIVING-DININGROOM
S= 66.35m²

DOUBLE HEIGHT
S= 17.00m²

LIFT
S= 1.80m²

DRESSING ROOM
S= 3.70m²

SHOWER
S= 3.00m²

BATH
S= 3.50m²

STAIRS
S= 6.75m²

MAIN BEDROOM
SUP= 33.35m²

DRESSING ROOM 2
SUP= 15.15m²

BATH 2
SUP= 3.50m²

HALL
SUP= 3.77m²

COVERED TERRACE
S= 4.32m²

PEDESTAN ACCESS
S= 8.90m²

OUTSIDE PARKING
S= 35.10m²

BACKYARD

BACKYARD

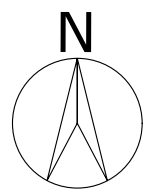
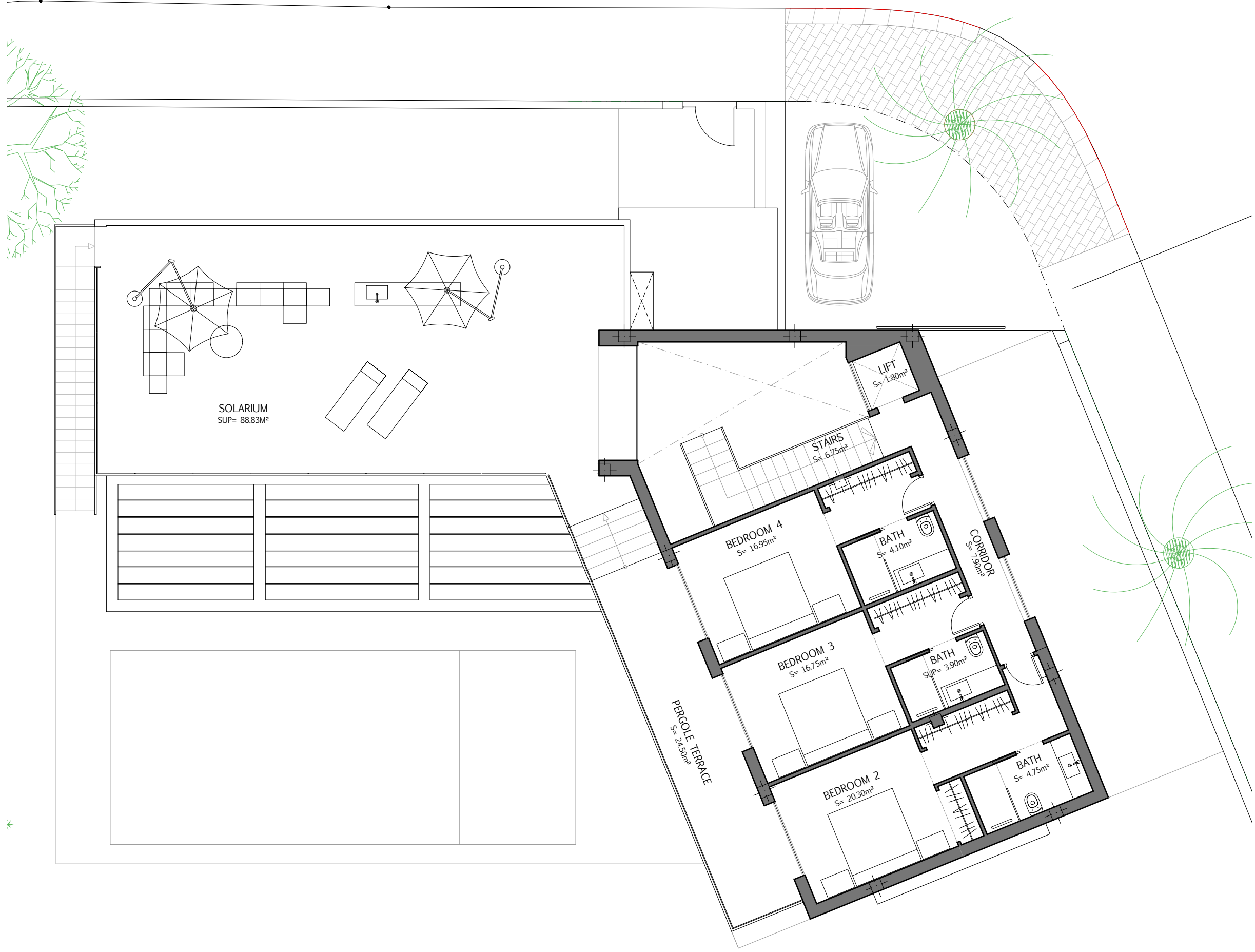
197A- GUADALMINA

FIRST FLOOR

27/07/2020

BUILT SURFACES

First Floor	119.10m ²
Terrace	24.50m ²
Solarium	88.80m ²
TOTAL	232.40m²



197A- GUADALMINA

BASEMENT OPTION

BASEMENT

27/07/2020

BUILT SURFACES

Basement	260.90m ²
Backyards	14.75m ²
Garage ramp	114.15m ²
TOTAL	389.90m²

