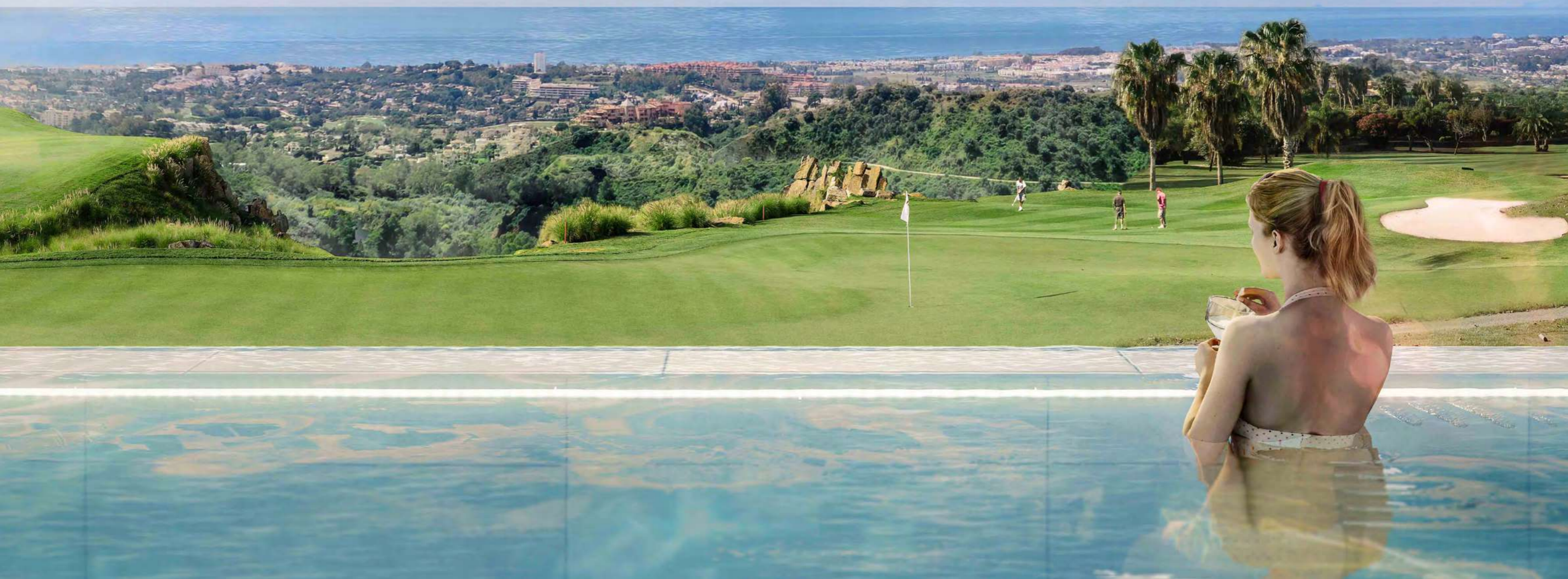




LUXURIOUS VILLAS IN BEST LOCATION WITH EXTENDED FACILITIES



INDEX

1. IMAGES & VIDEO

2. LOCATION

3. TIMELINE

4. INVESTMENT DETAILS

5. PAYMENT TERMS

6. PLANS

7. INVESTOR OFFER



1. IMAGES & VIDEO | TYPE DOWN



1. IMAGES & VIDEO | TYPE DOWN



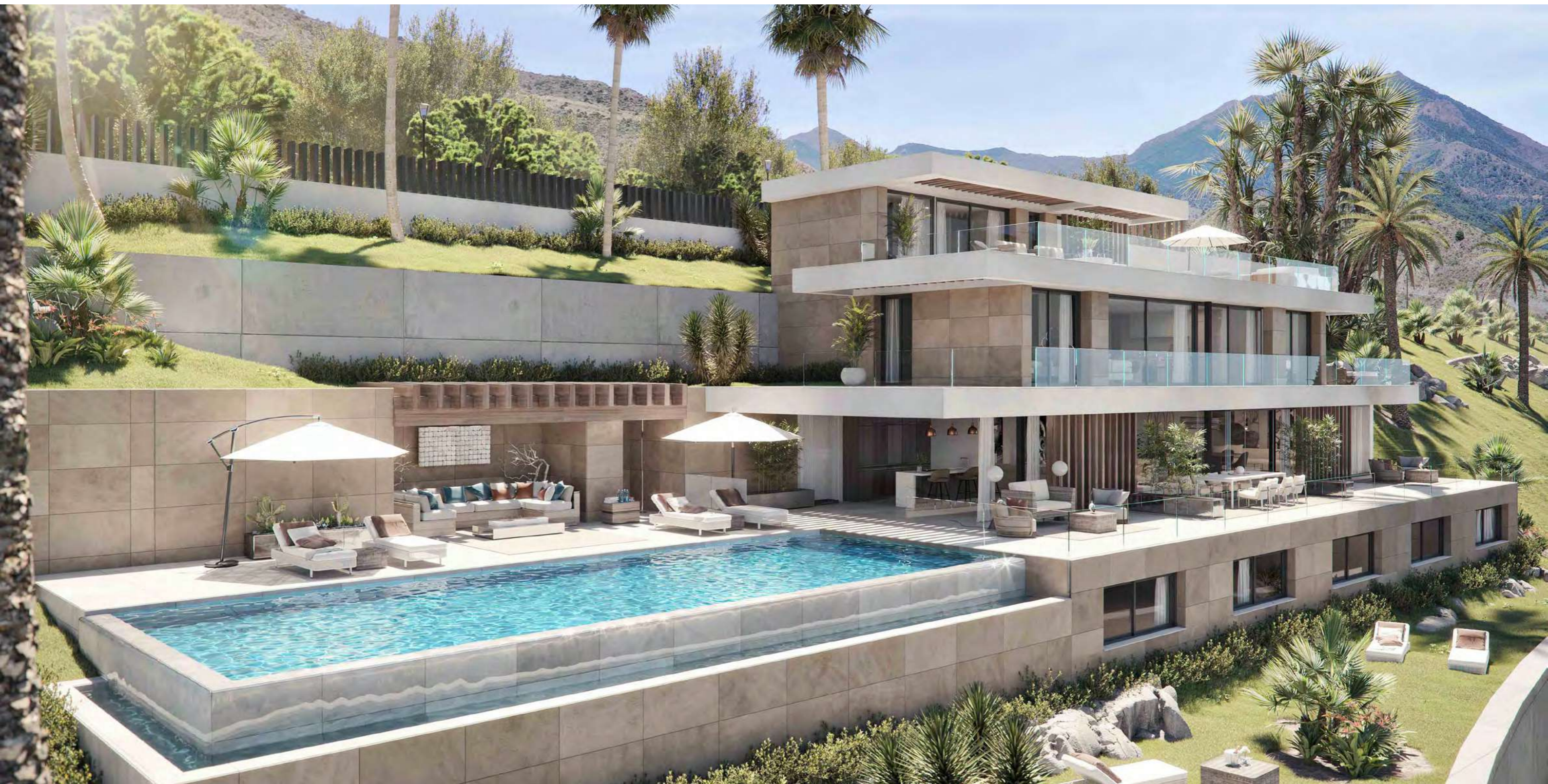
1. IMAGES & VIDEO | TYPE DOWN



1. IMAGES & VIDEO | TYPE UP



1. IMAGES & VIDEO | TYPE UP



1. IMAGES & VIDEO | TYPE UP



1. IMAGES & VIDEO | TYPE UP



1. LOCATION

MARBELLA

Marbella is internationally known for being a top tourist destination. Puerto Banús or simply “the port”, as many known, is home to the most luxurious boats, extravagant supercars and exclusive shops and restaurants. It is the ideal place to relax and watch a fascinating world go by. In the fascinating rural environment of Marbella-Benahavís, which stands out for its restaurants and its spectacular landscape. And also enjoy the charming cultural and social diversity of Marbella and Puerto Banús.



1. LOCATION

REAL DE LA QUINTA

Real de La Quinta is a fascinating residential complex, perfectly integrated into the idyllic slopes of the Sierra de las Nieves, a UNESCO declared biosphere reserve, overlooking the cosmopolitan and picturesque Costa del Sol. Make your dream lifestyle come true in a place where nature coexists with the modern world.



1 Access Real de la Quinta

2 Access Nueva Andalucía

— — — Road to access



1. LOCATION

SERVICES



Real de La Quinta constitutes a rural environment that stands out for its spectacular landscape and urban planning developed under the BREEAM criteria.

The plots are located near the recreational facilities of the Real de La Quinta resort: lake, beach, golf club, tennis, spa and horse riding center.

All plots are directly connected to the main road and located 5 minutes by car from the entrance of the complex.



1. LOCATION

GENERAL VIEWS FROM DEVELOPMENT



1. LOCATION

FACILITIES

1

LEISURE AREA

Hotel, Spa, Stores, boutiques & restaurants.

2

GOLF

Golf course with sea views.

3

ACADEMY

Golf lessons for all levels.

4

LAKE CLUB

Exclusive company & best service.

5

BEACH

Sandy & tranquile beaches.

6

SPORT

Tennis court & padel area amongs other.

7

LAKE

Water sport, navigable lake.

8

HORSE RIDING

Best horse riding facilities.

9

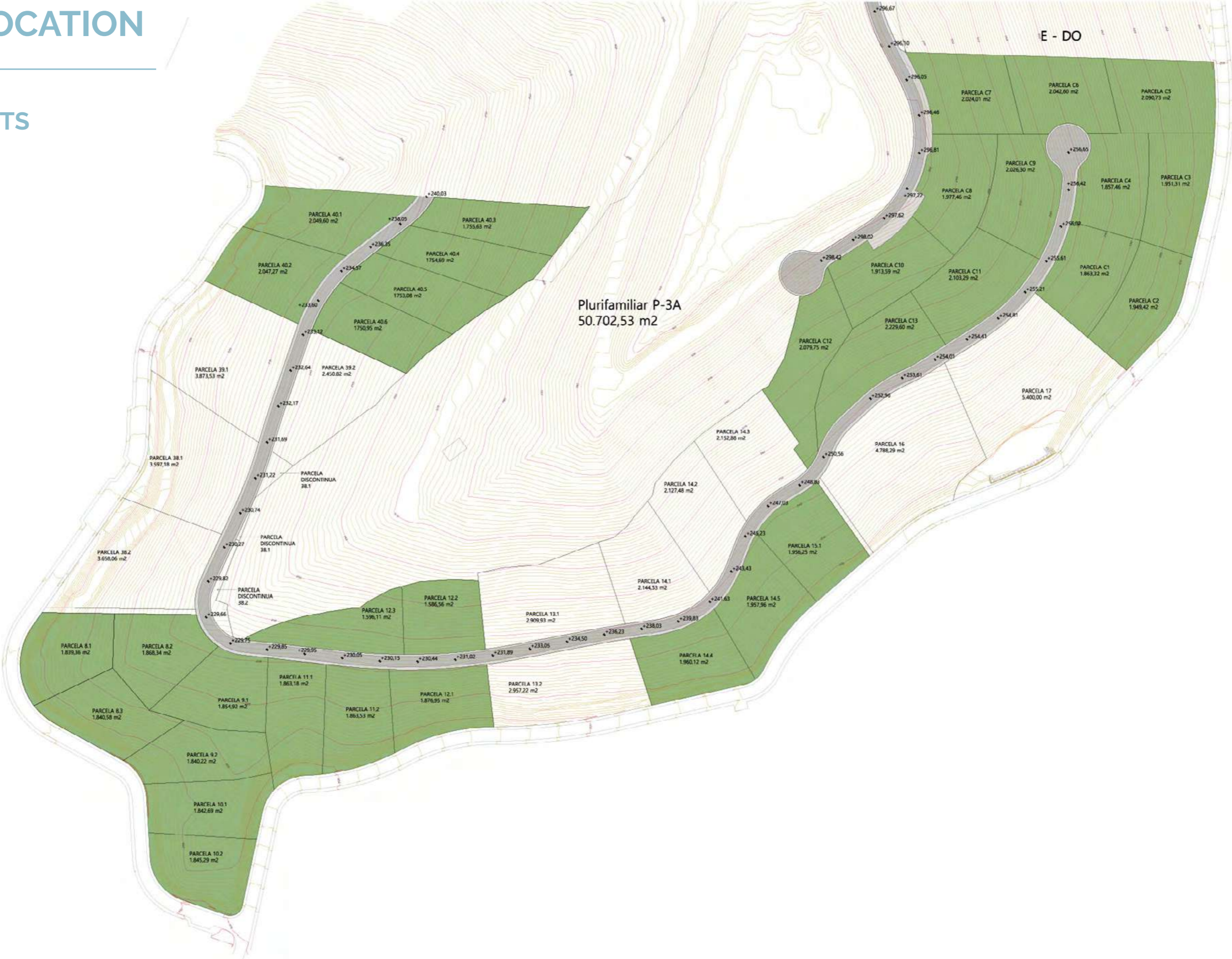
PLOTS

Plots location.

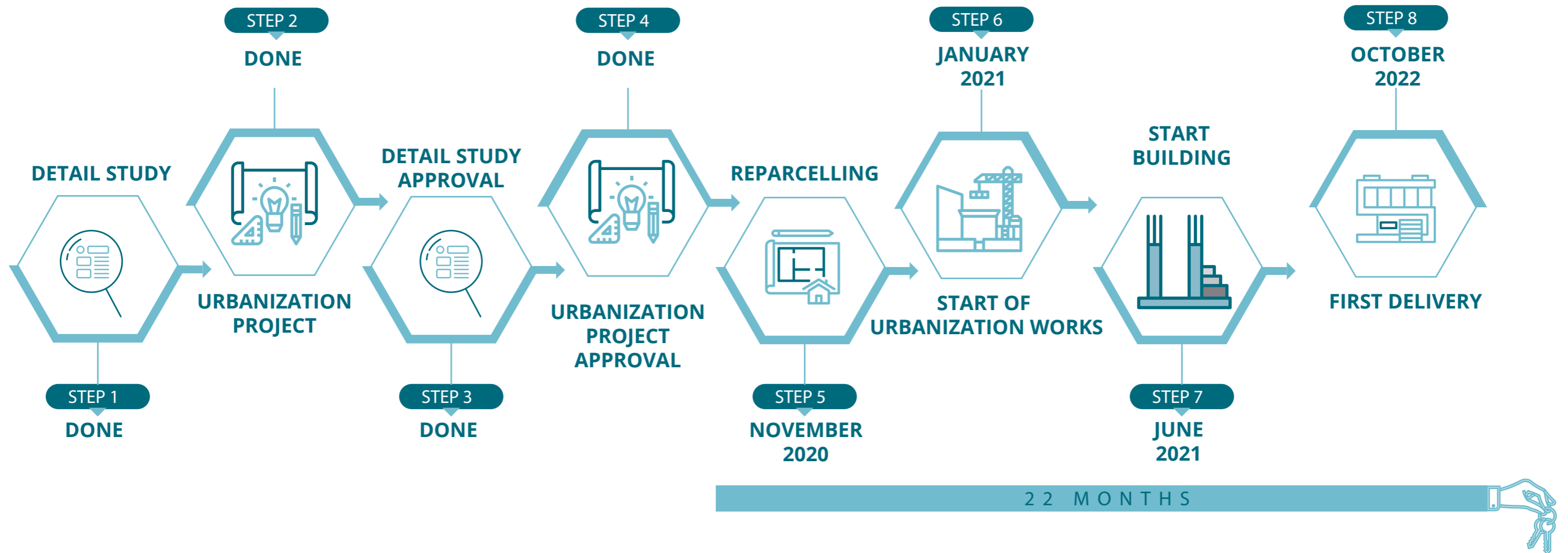


1. LOCATION

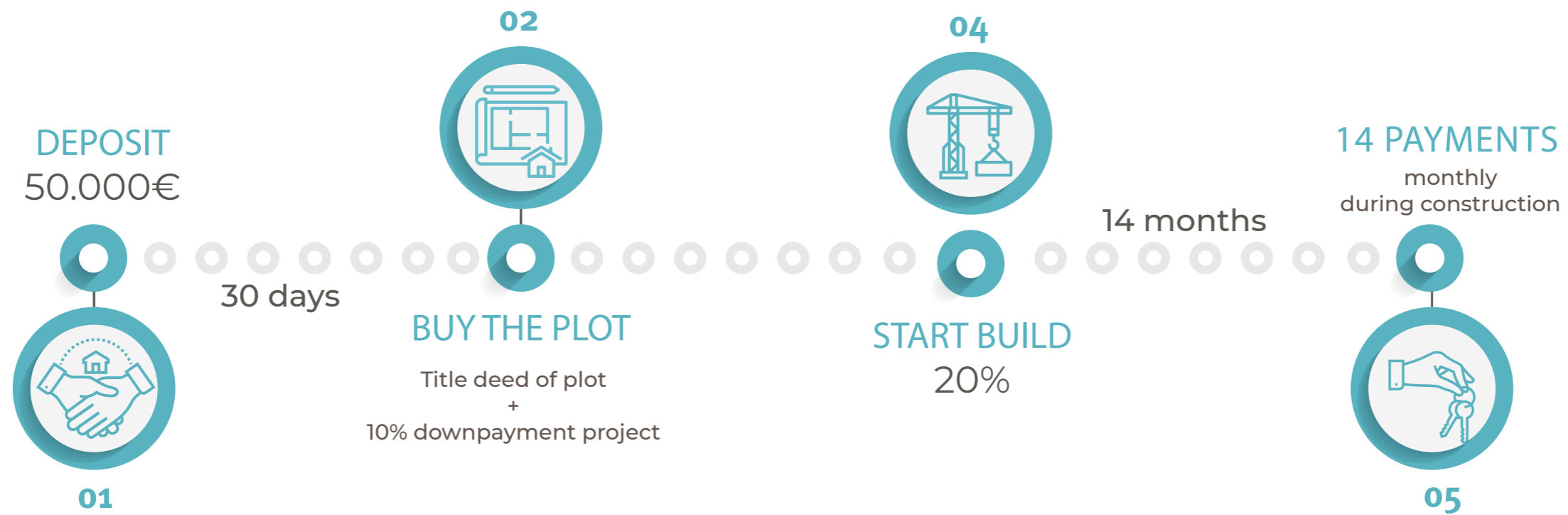
PLOTS



2. TIMELINE



4. PAYMENTS TERMS



All the amounts paid by the investor are guaranteed by an insurance policy for compliance of all contractual obligations, including the construction of the properties.

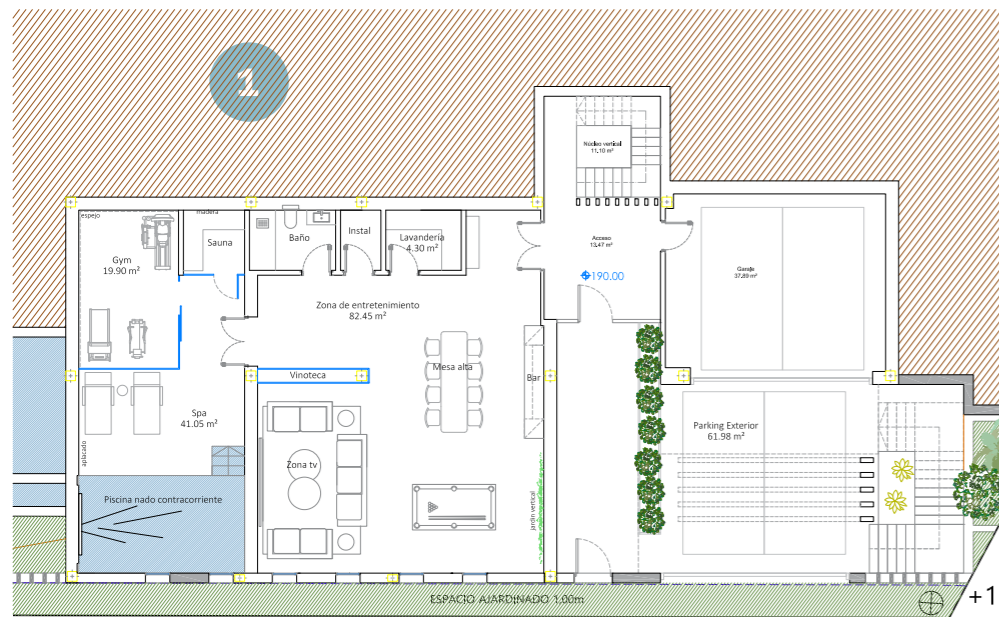
The prices include the finished basement as an open space. Internal separations and installations are available as extras

5. PLANS VILLA TYPE DOWN

TOTAL LIVING AREA: 585,04 m²

TOTAL TERRACES: 373,15 m²

TOTAL INCLUDING TERRACES: 1033,19 m²

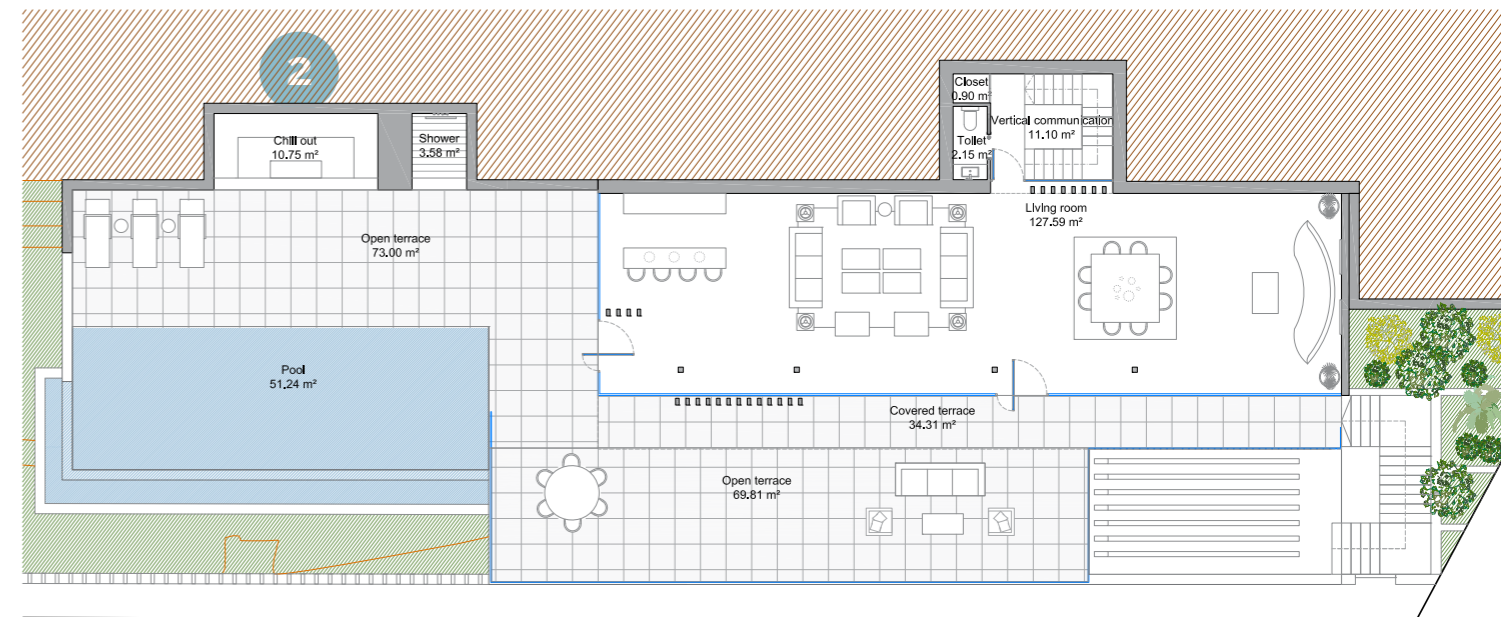


1

Basement

261,75 m²
Living Area

75 m²
Parking



2

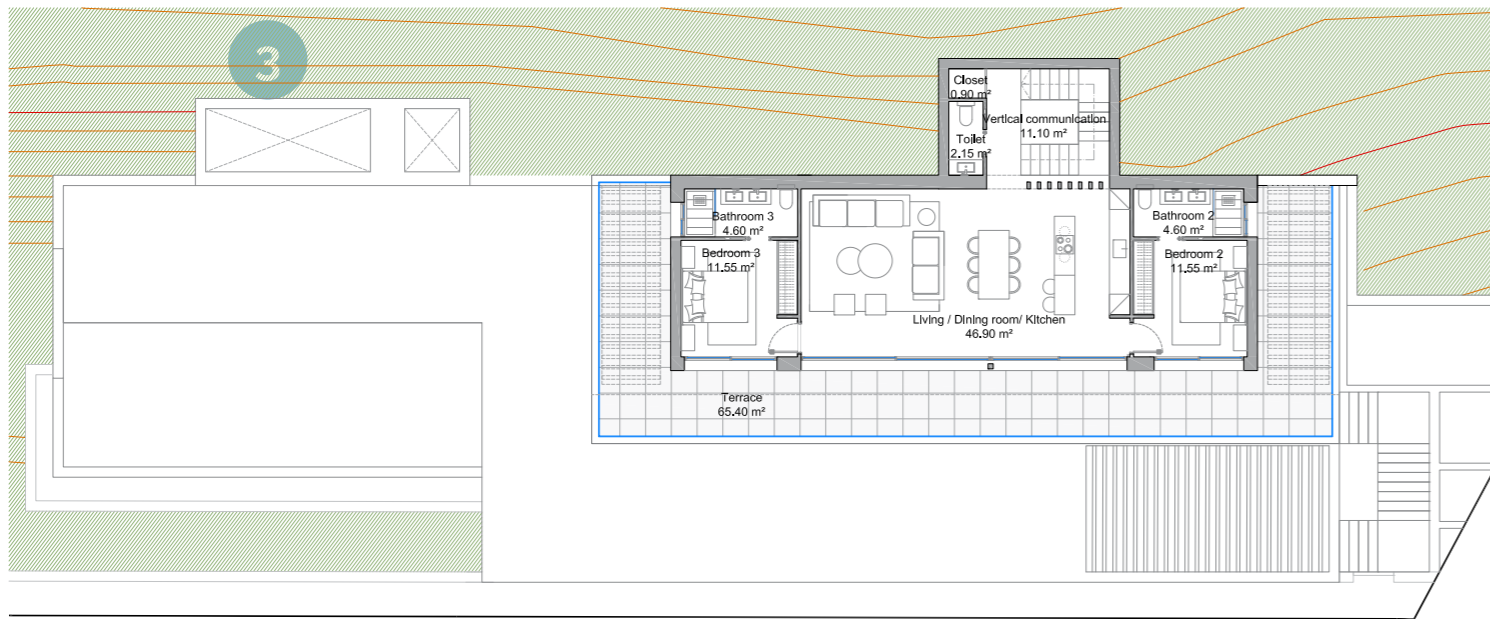
Ground Floor

149,23 m²
Living Area

51,24 m²
Swimming Pool

196,19 m²
Terraces

5. PLANS VILLA TYPE DOWN

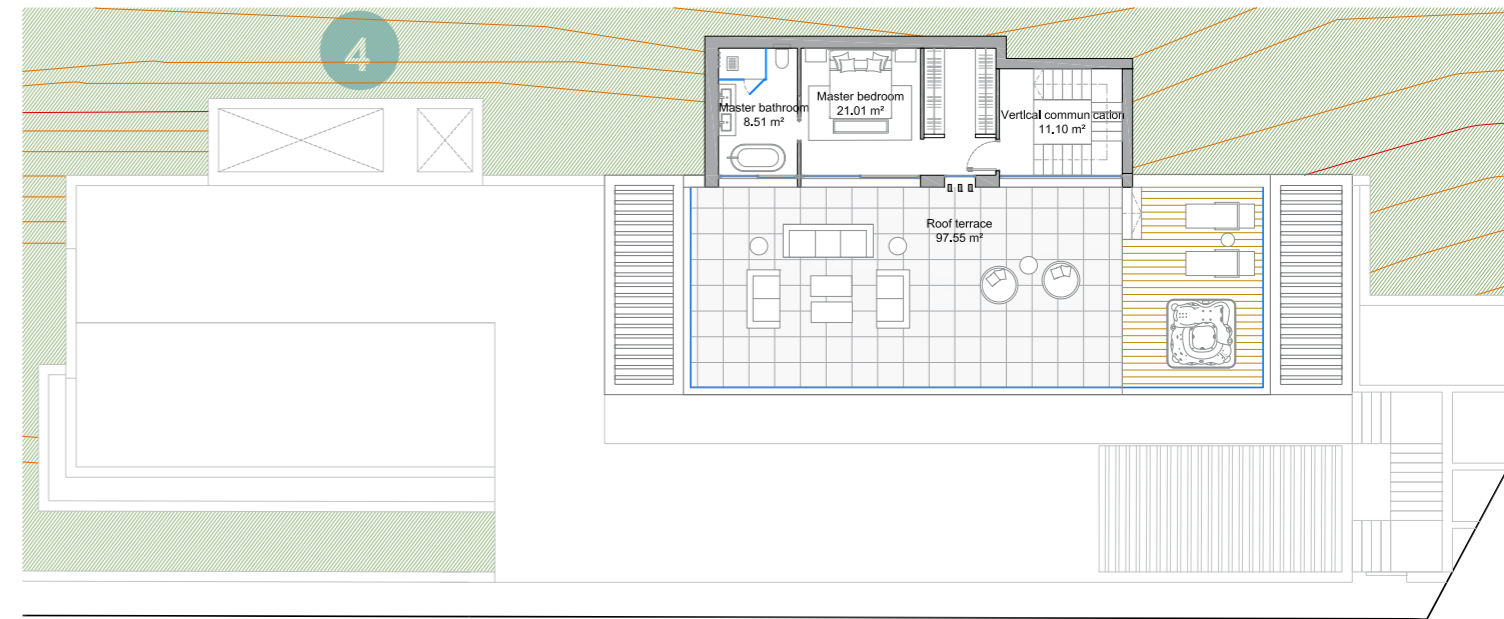


3

First floor

120,11 m²
Living Area

69,64 m²
Terraces



4

Second Floor

53,95 m²
Living Area

107,32 m²
Terraces

VIEWS EXAMPLE PLOT 10.1

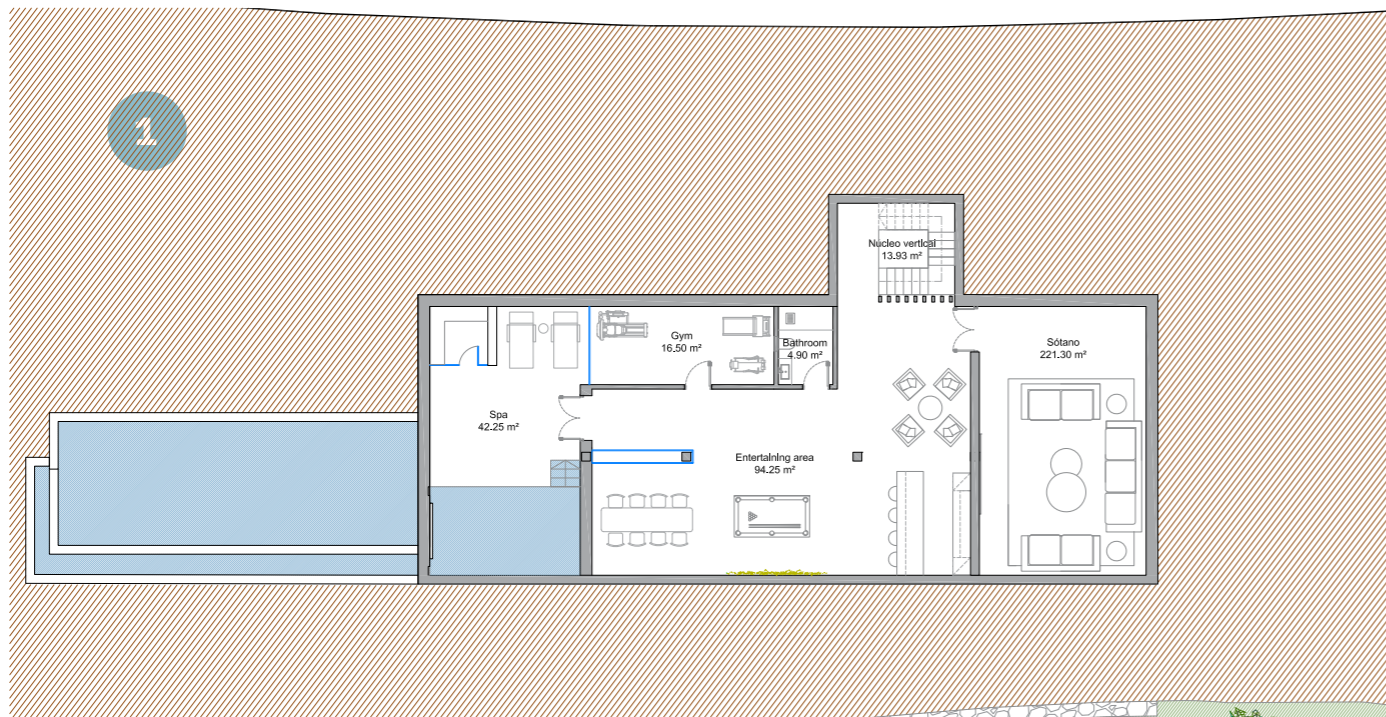


5. PLANS VILLA TYPE UP

TOTAL LIVING AREA: 579,43 m²

TOTAL TERRACES: 339,57 m²

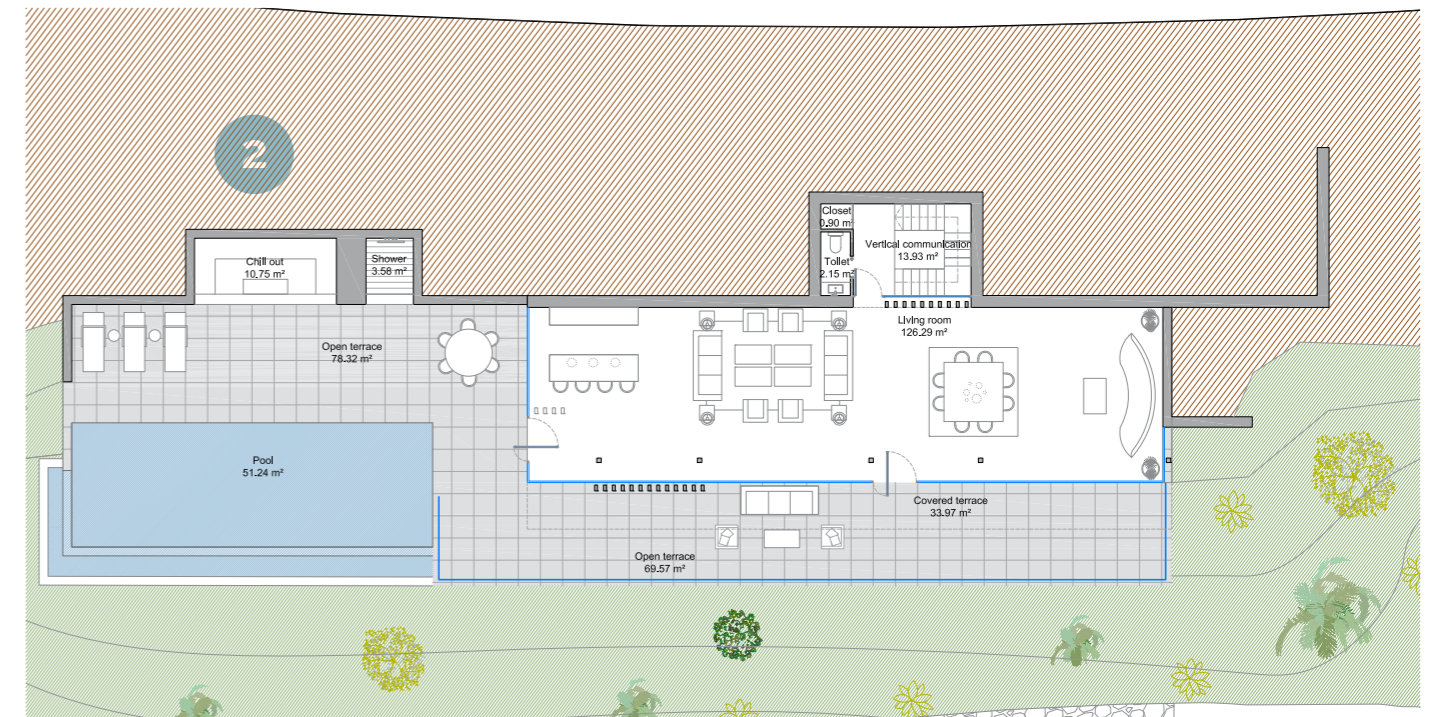
TOTAL INCLUDING TERRACES: 980,98 m²



1

Basement

257,56 m²
Living Area



2

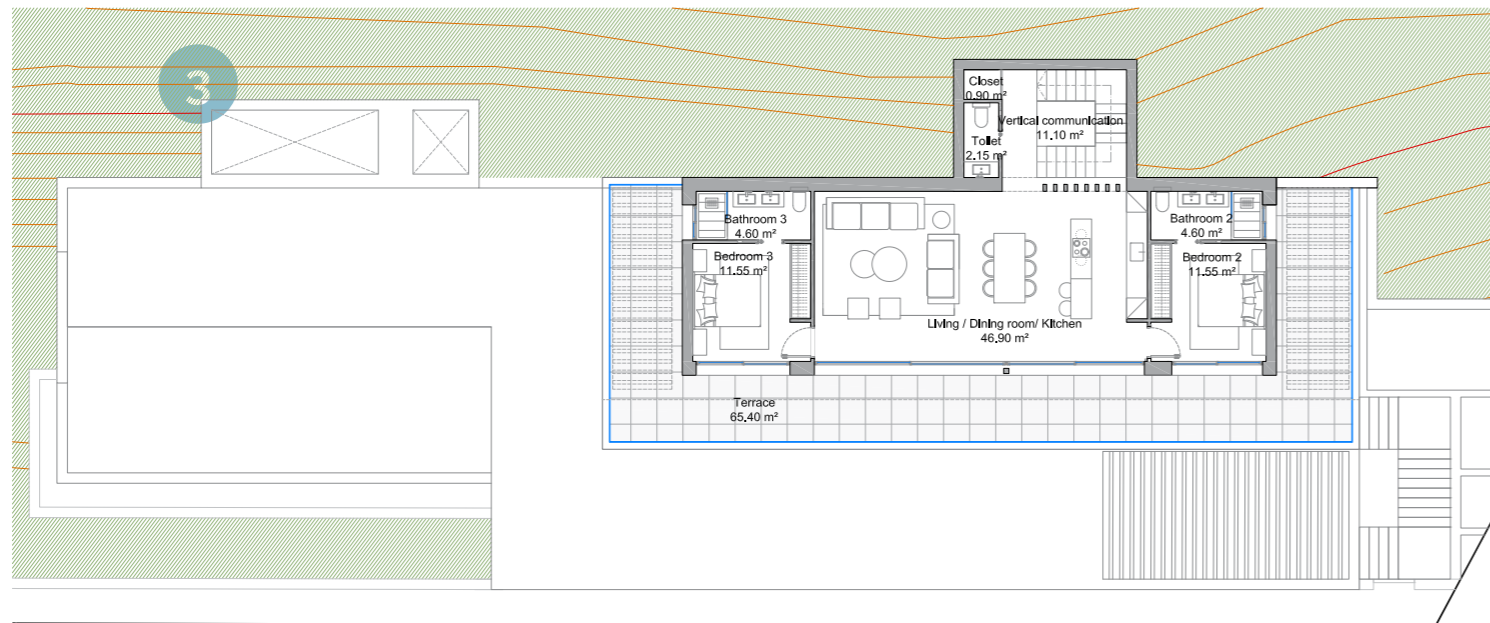
Ground Floor

149,58 m²
Living Area

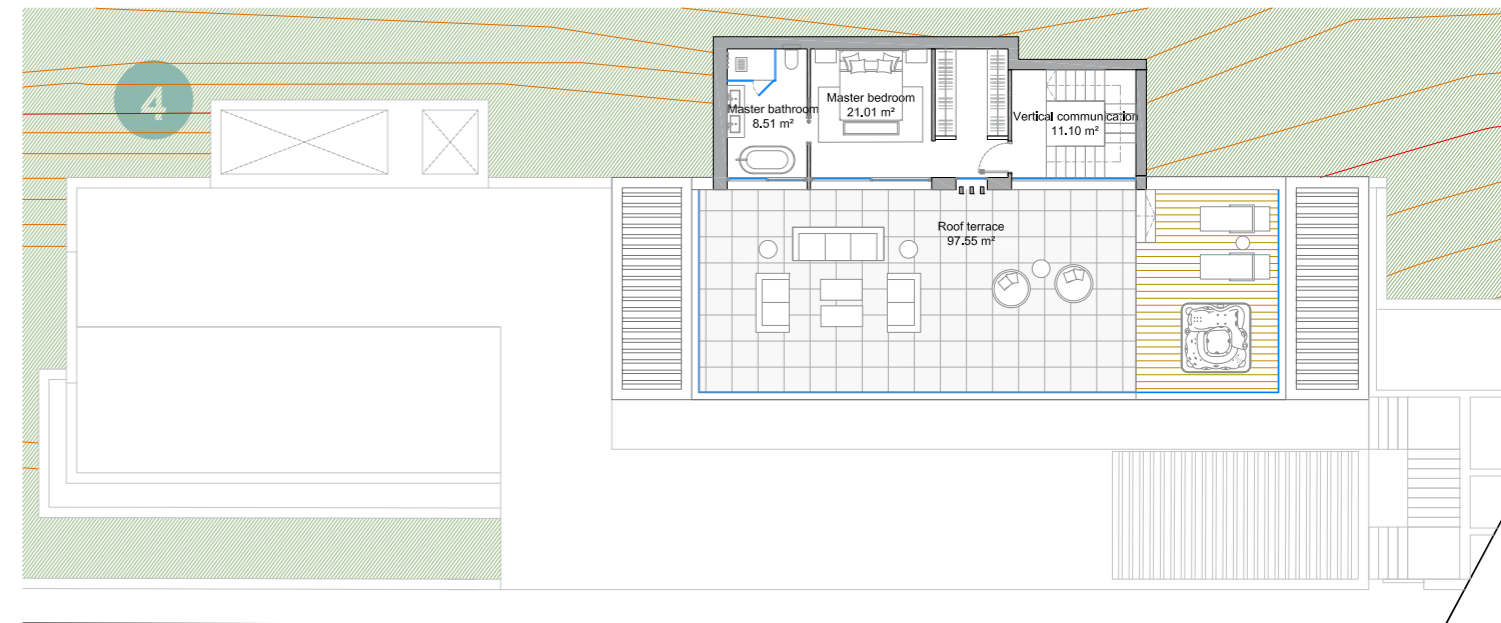
51,24 m²
Swimming Pool

177,12 m²
Terraces

5. PLANS VILLA TYPE UP



3
 First Floor
 117,38 m²
 Living Area
 65,4 m²
 Terraces



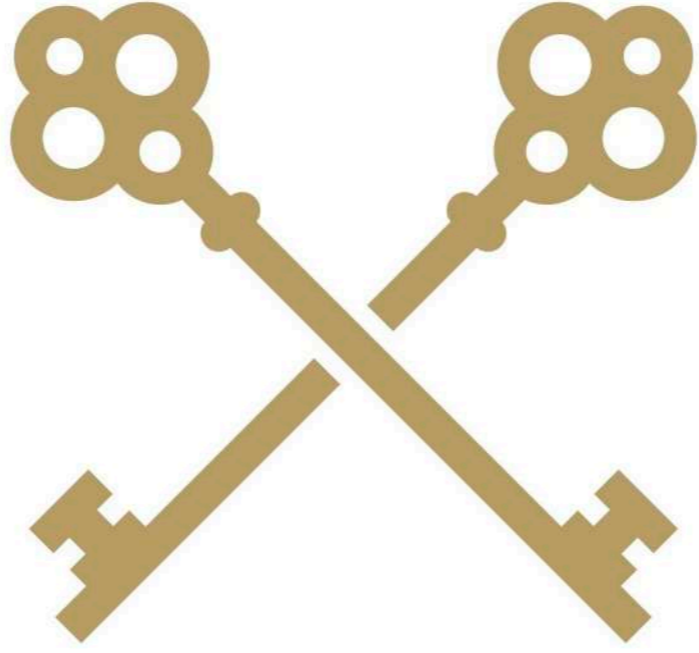
4
 Second Floor
 54,91 m²
 Living Area
 97,05 m²
 Terraces
 61,98 m²
 Parking

VIEWS EXAMPLE PLOT 11.2









IIS