



FLOOR PLANS

DETAILS



279,48m²



237,67m²



4

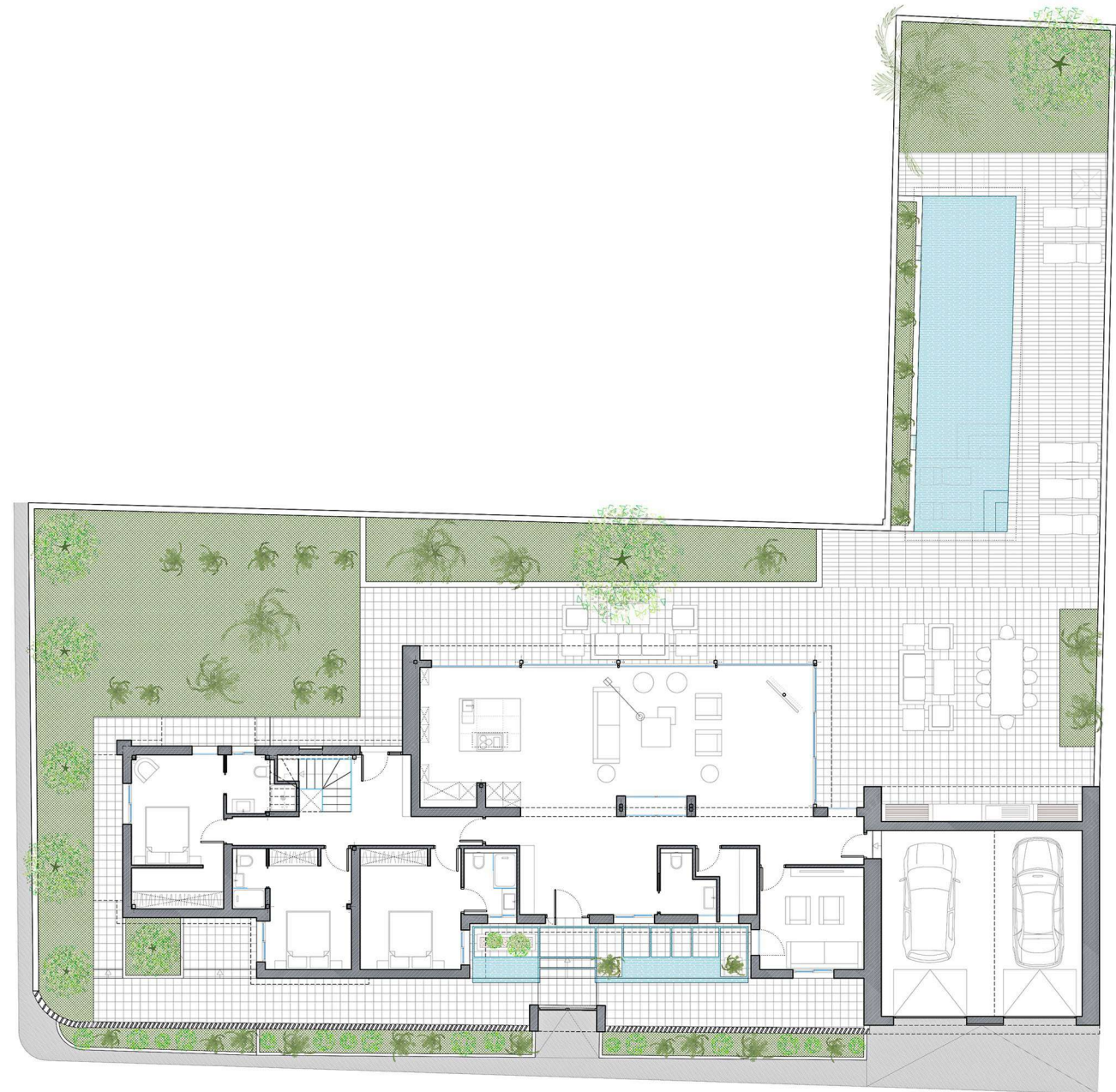


4

ORIENTATION



Ground Floor



8,26m²



13,83m²



175,70m²

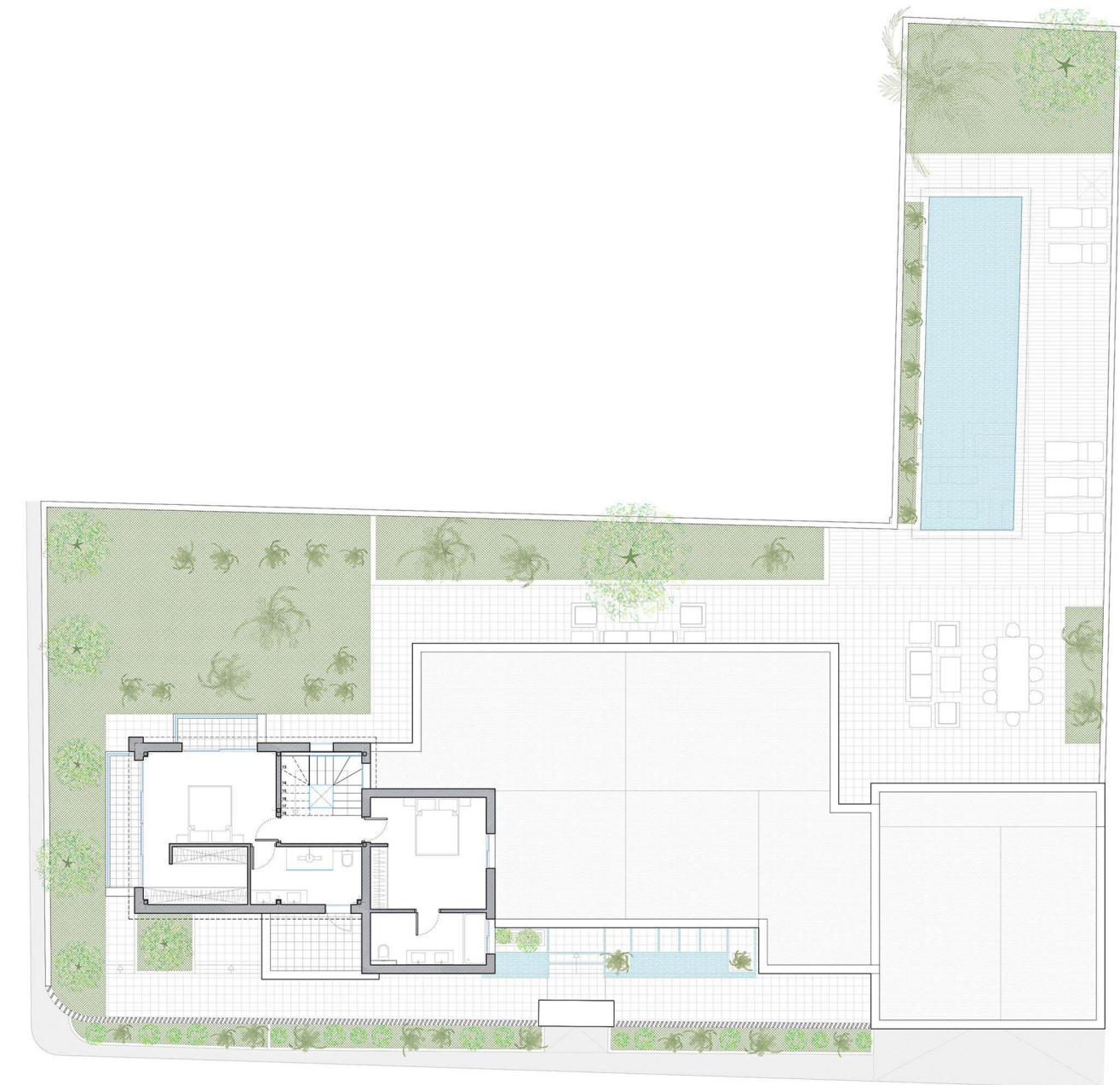


36,80m²



2 places

First Floor



DETAILS



74,68m²



60,19m²



2



2



13,83m²

DETAILS

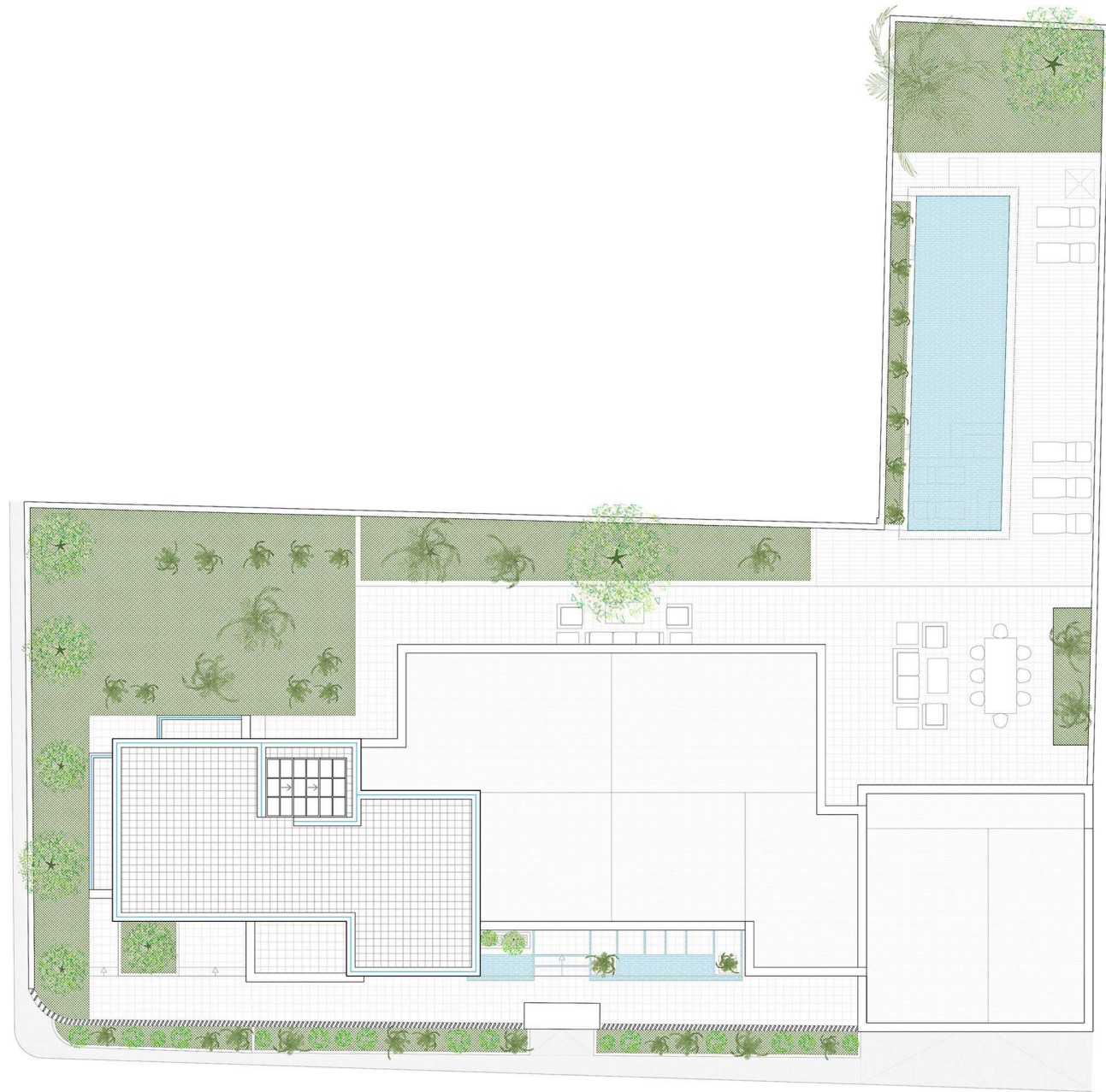


59,88m²



59,88m²

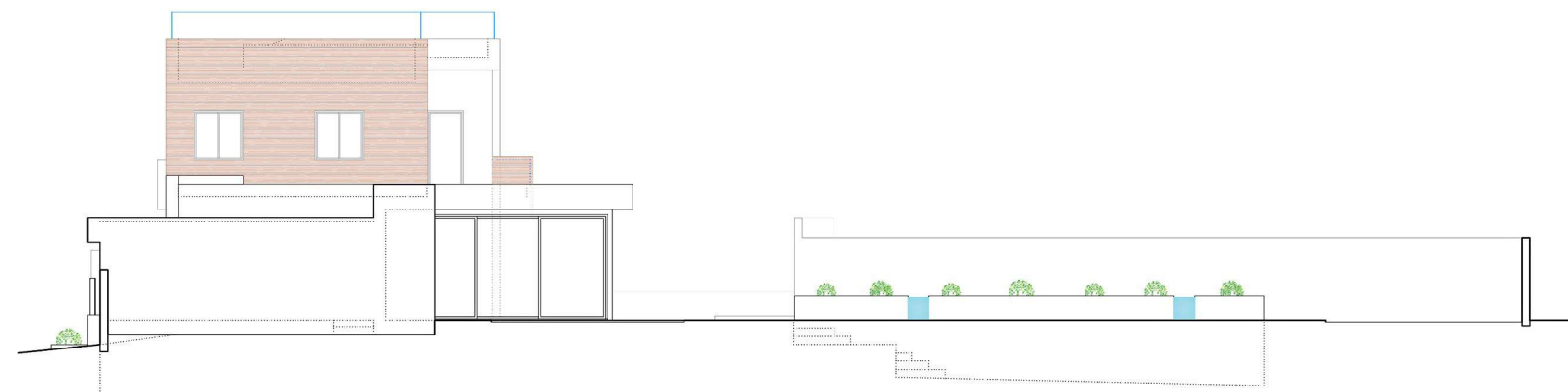
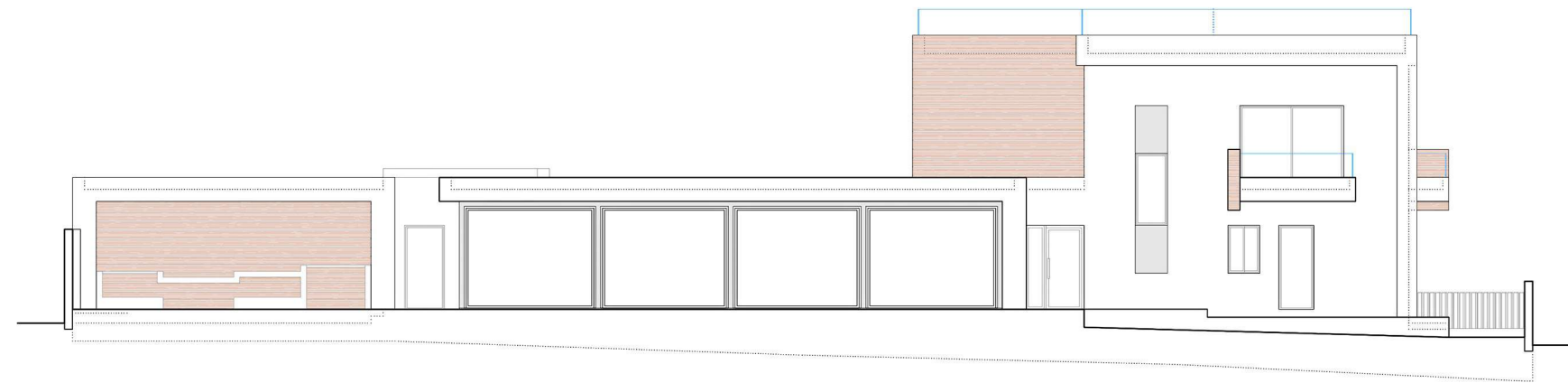
Roof Terrace



Elevations



Elevations



Sections

