

# FLOOR PLANS

TYPE A



## PLANTA BAJA

Superficie Construida	121,14 m <sup>2</sup>
Terrazas Cubiertas	31,80 m <sup>2</sup>
Terrazas No Cubiertas	51,8 m <sup>2</sup>
Piscina	41,6 m <sup>2</sup>

## PRIMERA PLANTA

Superficie Construida	121,55 m <sup>2</sup>
Terrazas No Cubiertas	49,4 m <sup>2</sup>

## SÓTANO

Superficie Construida	161,05 m <sup>2</sup>
-----------------------	-----------------------

## GROUND FLOOR

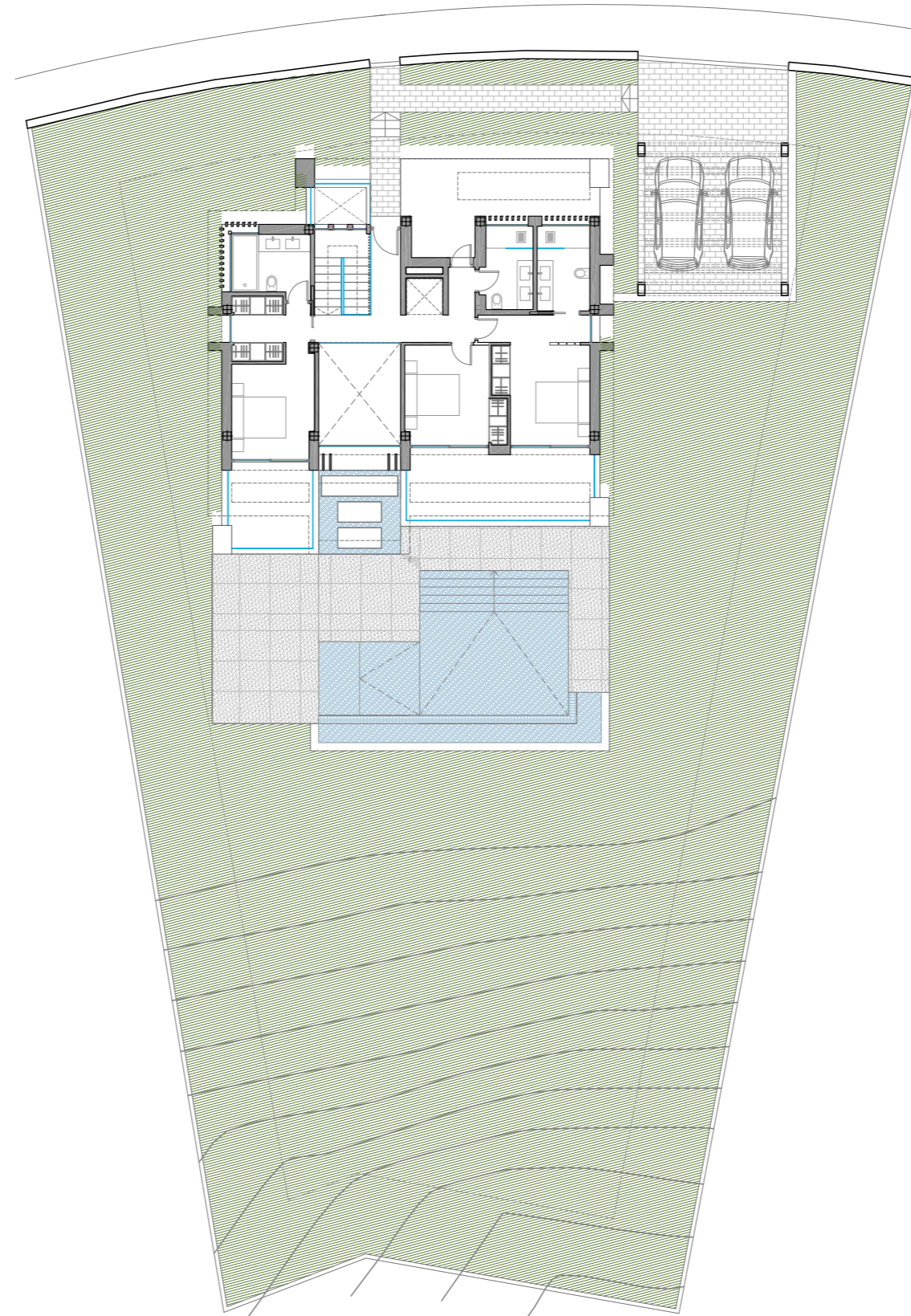
Built Area	121,14 m <sup>2</sup>
Covered Terraces	31,80 m <sup>2</sup>
Uncovered Terraces	51,8 m <sup>2</sup>
Pool	41,6 m <sup>2</sup>

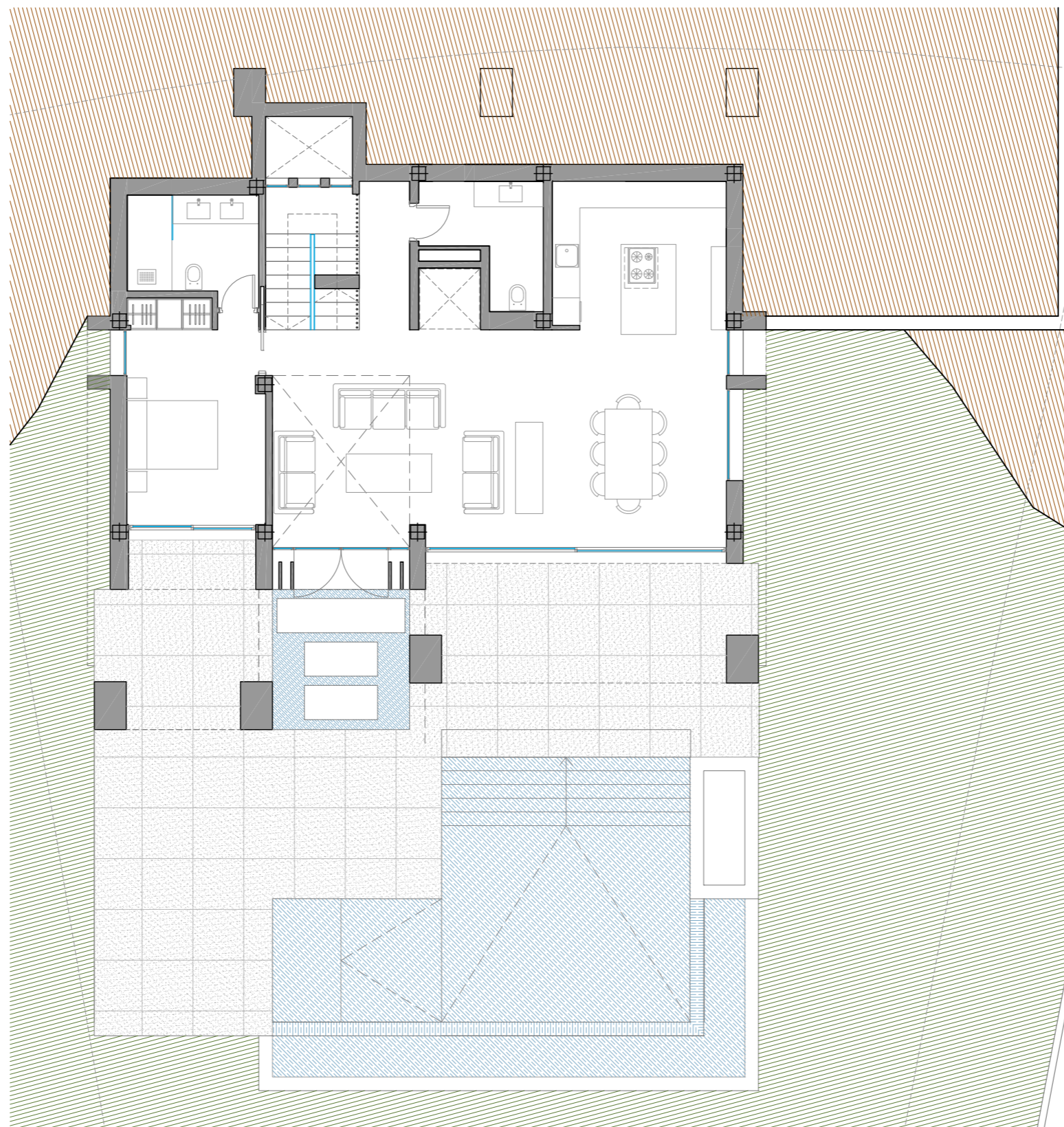
## FIRST FLOOR

Built Area	121,55 m <sup>2</sup>
Uncovered Terraces	49,4 m <sup>2</sup>

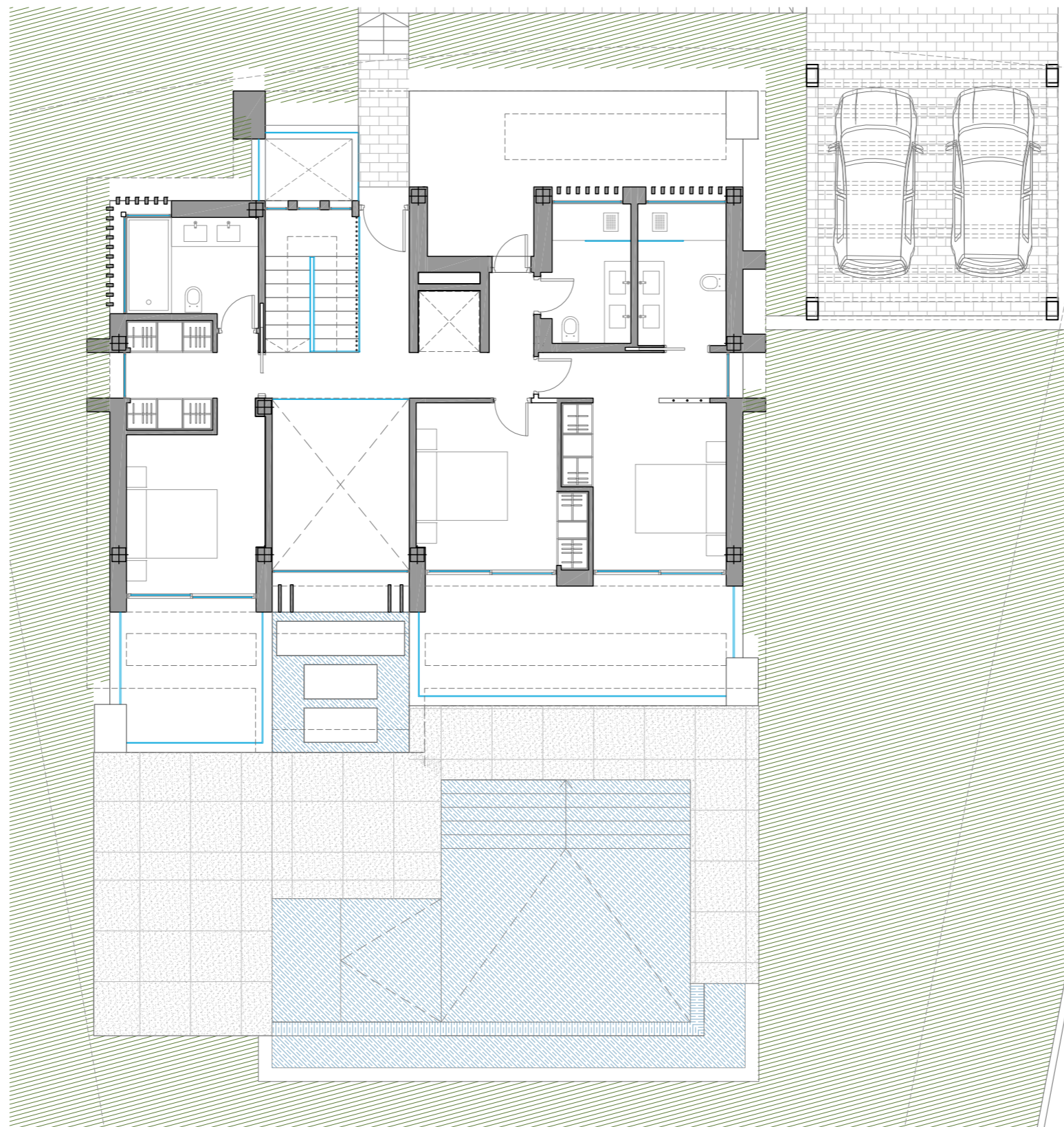
## BASEMENT

Built Area	161,05 m <sup>2</sup>
------------	-----------------------

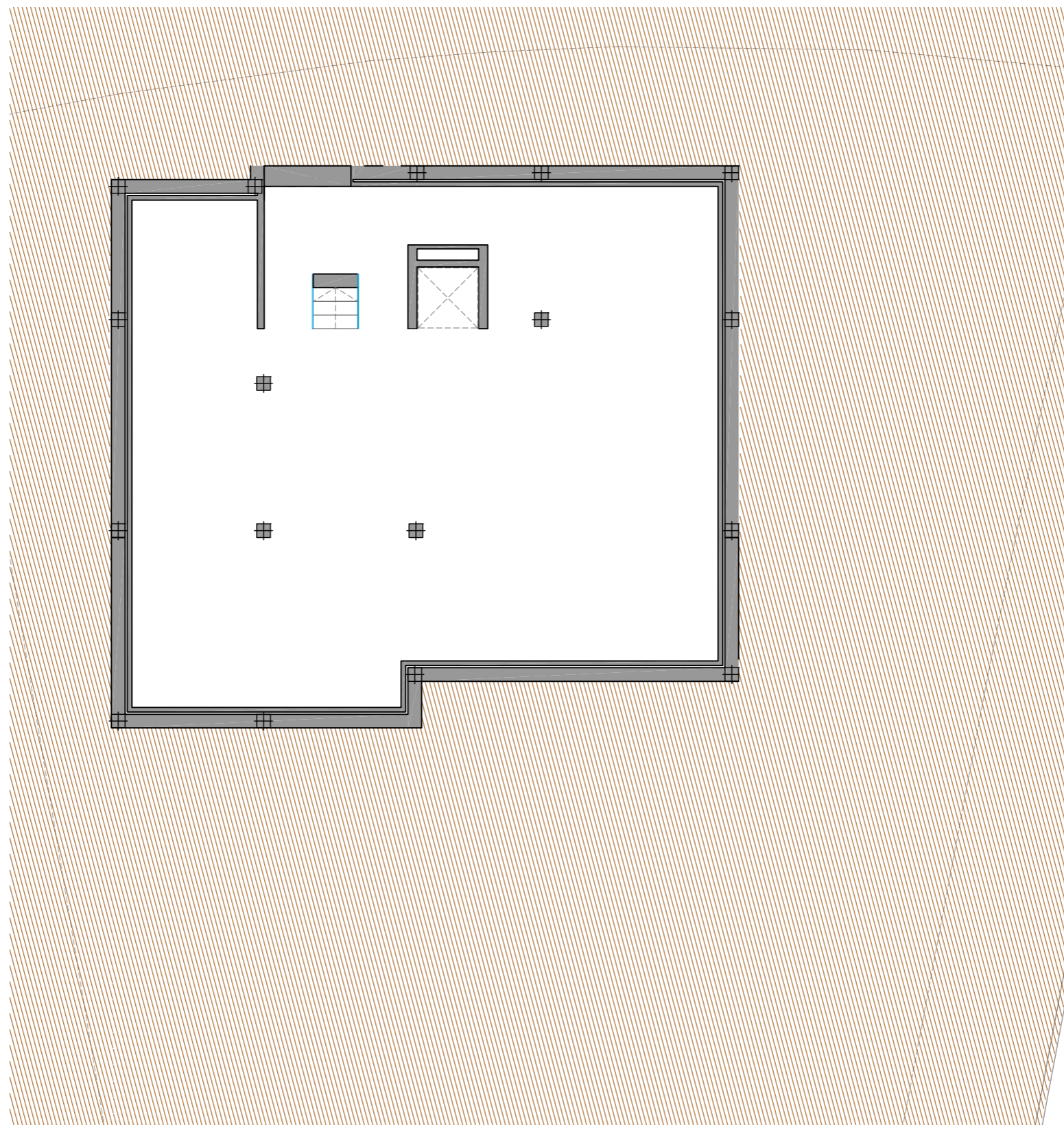




Built Area	121,14 m <sup>2</sup>
Covered Terraces	31,80 m <sup>2</sup>
Uncovered Terraces	51,8 m <sup>2</sup>
Pool	41,6 m <sup>2</sup>



Built Area	121,55 m <sup>2</sup>
Uncovered Terraces	49,4 m <sup>2</sup>



Built Area

161,05 m<sup>2</sup>

An aerial photograph of a forest floor. A dark grey, textured path or stream bed runs diagonally from the bottom right towards the top left. The surrounding forest floor is covered in a dense layer of golden-brown, needle-like debris, possibly pine needles, which are scattered across a lighter greyish-brown soil or leaf litter. The overall scene is captured from a high angle, looking down on the forest.

# FLOOR PLANS

TYPE B



## PLANTA BAJA

Superficie Construida	121,14 m <sup>2</sup>
Terrazas Cubiertas	31,80 m <sup>2</sup>
Terrazas No Cubiertas	51,8 m <sup>2</sup>
Piscina	41,6 m <sup>2</sup>

## PRIMERA PLANTA

Superficie Construida	121,55 m <sup>2</sup>
Terrazas No Cubiertas	49,4 m <sup>2</sup>

## SÓTANO

Superficie Construida	161,05 m <sup>2</sup>
-----------------------	-----------------------

## GROUND FLOOR

Built Area	121,14 m <sup>2</sup>
Covered Terraces	31,80 m <sup>2</sup>
Uncovered Terraces	51,8 m <sup>2</sup>
Pool	41,6 m <sup>2</sup>

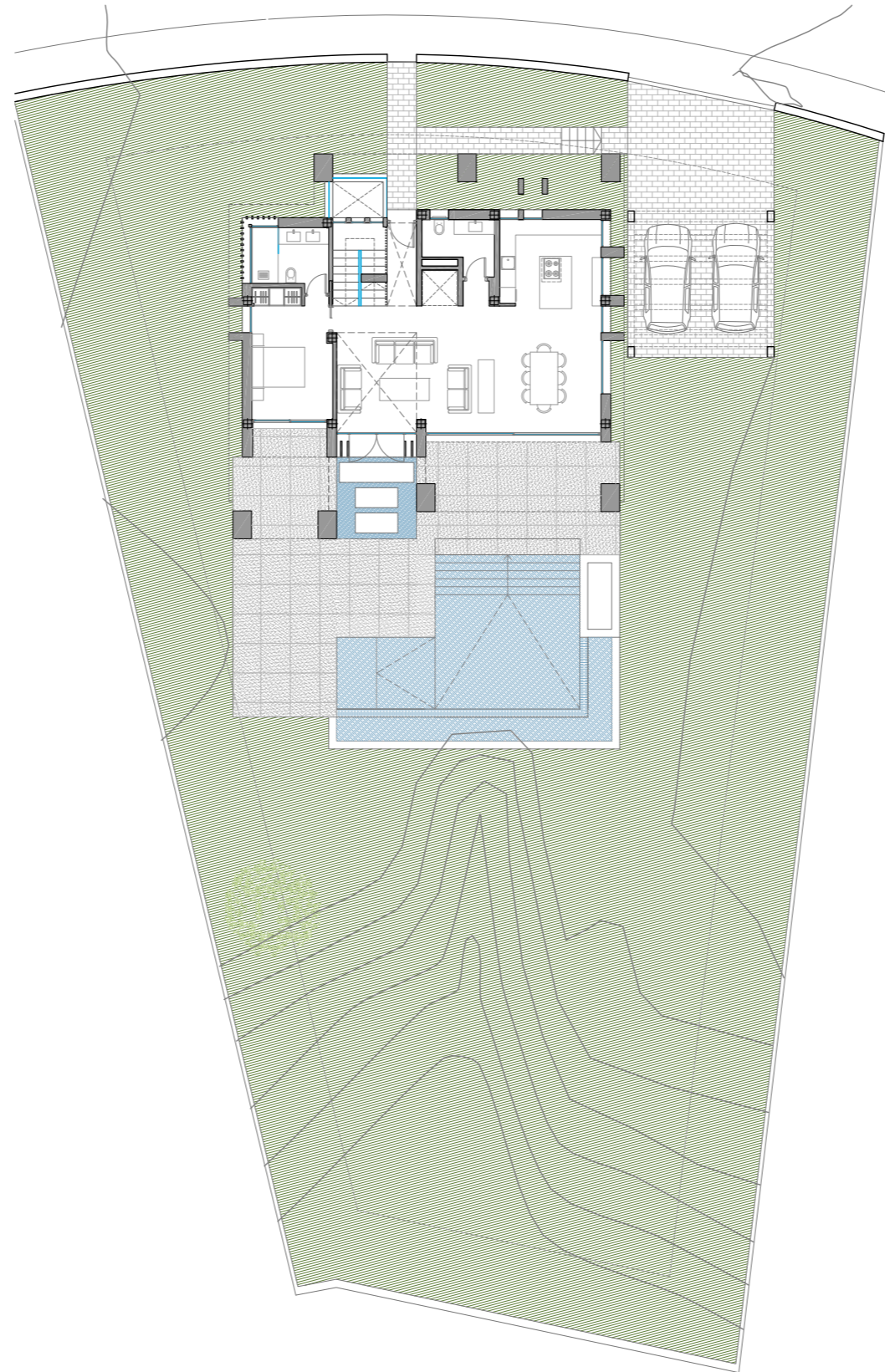
## FIRST FLOOR

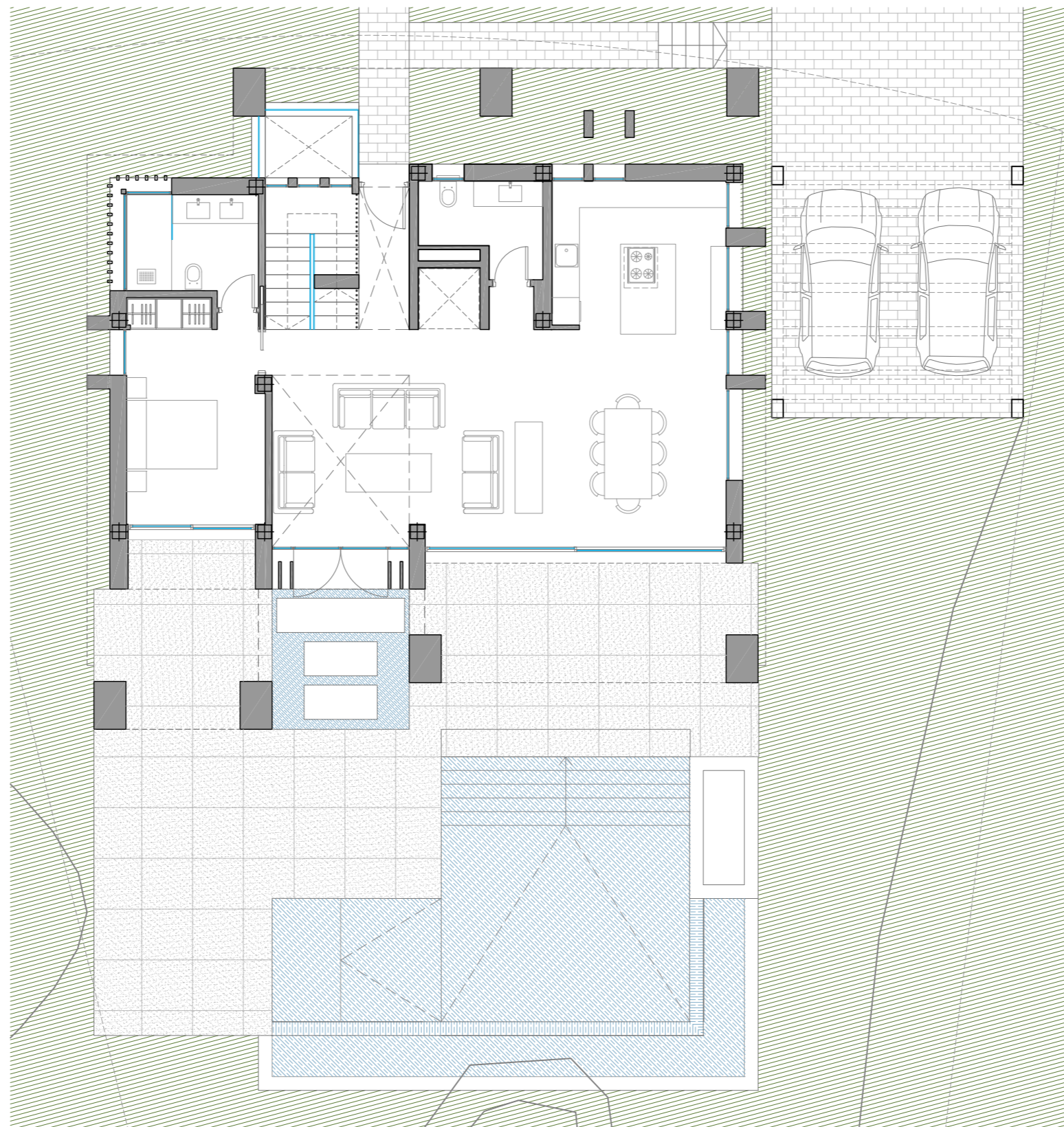
Built Area	121,55 m <sup>2</sup>
Uncovered Terraces	49,4 m <sup>2</sup>

## BASEMENT

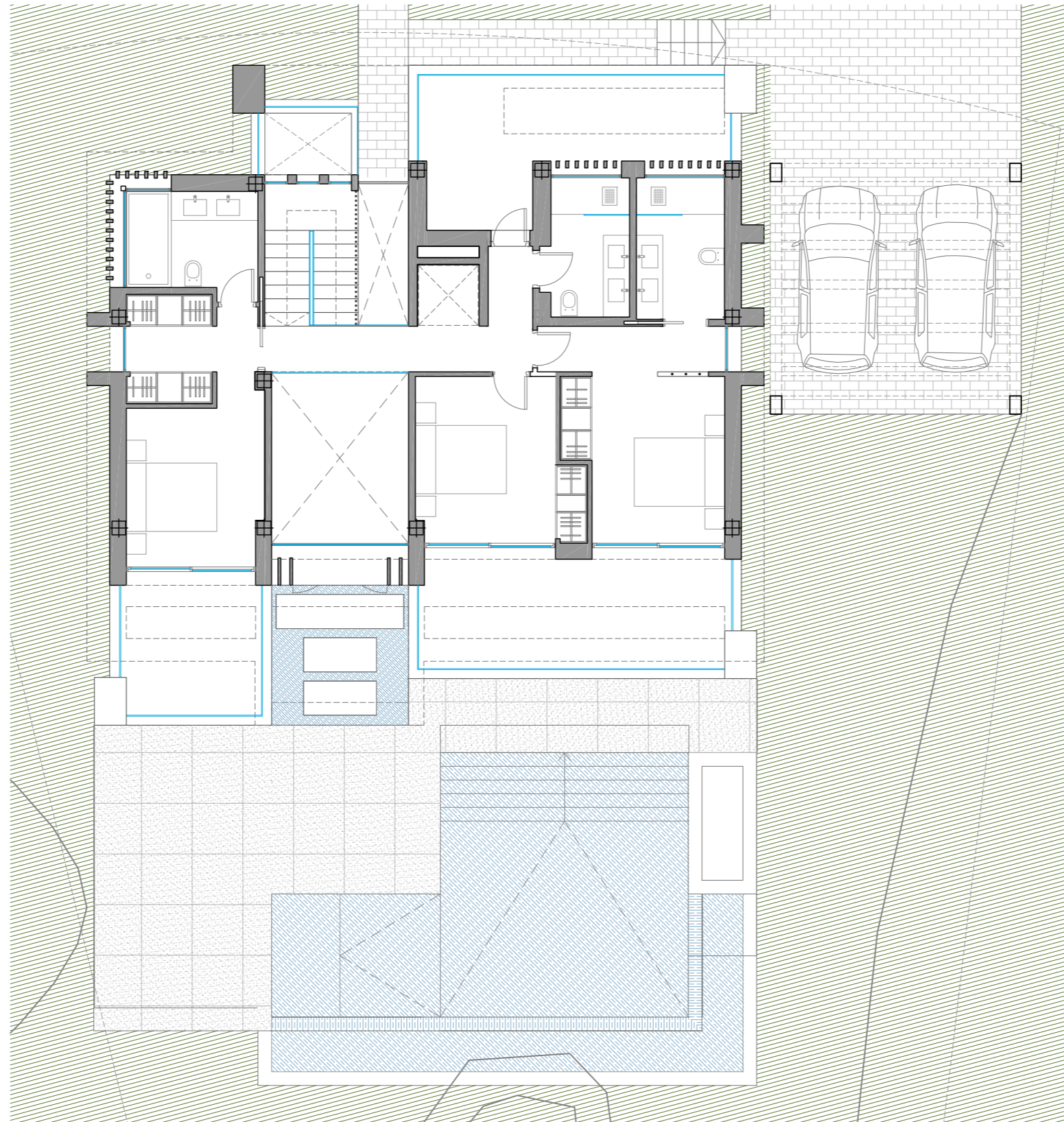
Built Area	161,05 m <sup>2</sup>
------------	-----------------------





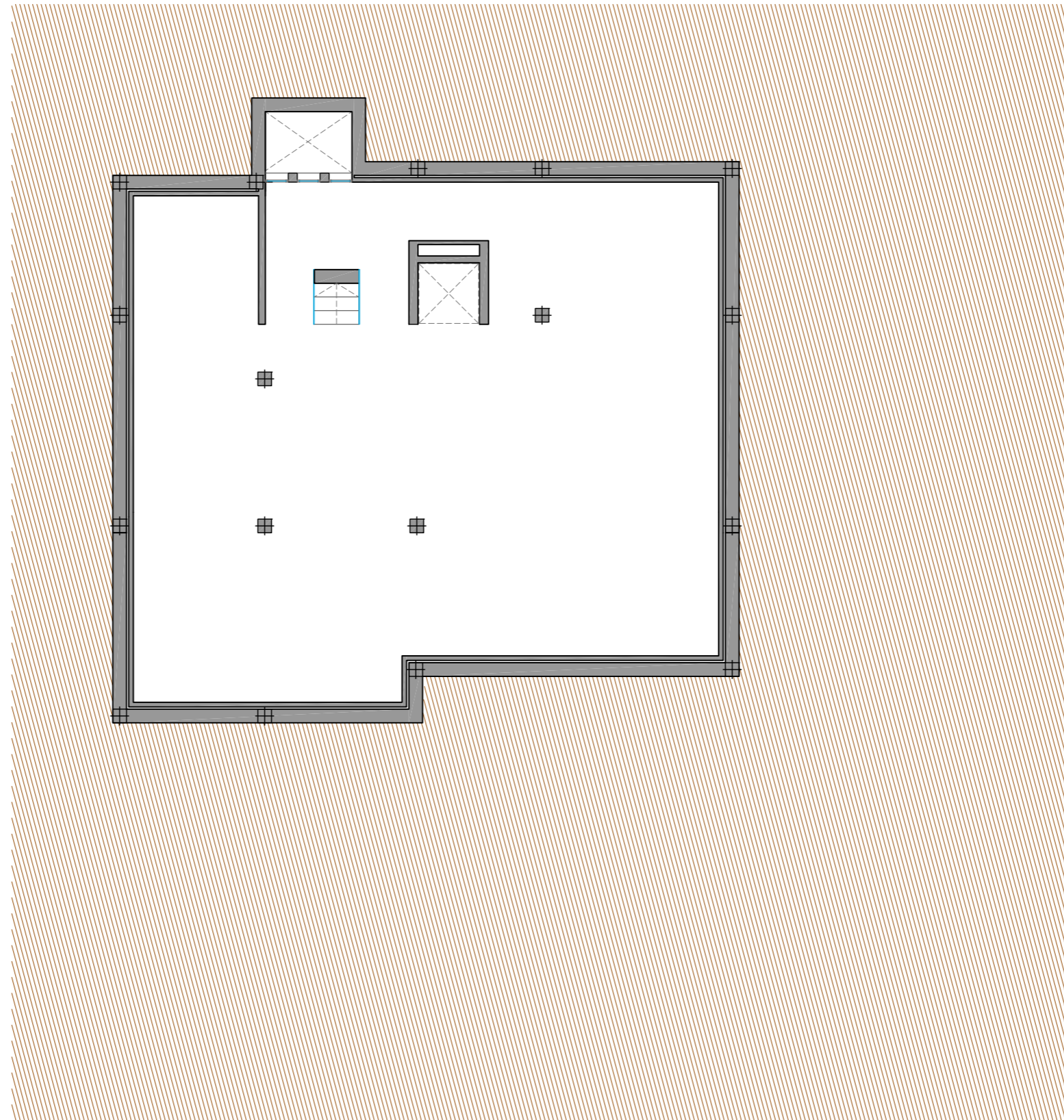


Built Area	121,14 m <sup>2</sup>
Covered Terraces	31,80 m <sup>2</sup>
Uncovered Terraces	51,8 m <sup>2</sup>
Pool	41,6 m <sup>2</sup>



Built Area 121,55 m<sup>2</sup>

Uncovered Terraces 49,4 m<sup>2</sup>



Built Area

161,05 m<sup>2</sup>

An aerial photograph of a forest floor. A dark grey, textured path or stream bed runs diagonally from the bottom right towards the center. The surrounding forest floor is covered in a dense layer of golden-brown, needle-like debris, likely pine needles, which are scattered across a lighter greyish-brown soil or leaf litter. The overall scene is captured from a high angle, showing the intricate patterns of the forest floor.

# FLOOR PLANS

TYPE C



## PLANTA BAJA

Superficie Construida	98,05 m <sup>2</sup>
Terrazas Cubiertas	33,08 m <sup>2</sup>
Piscina	34,8 m <sup>2</sup>

## PRIMERA PLANTA

Superficie Construida	88,68 m <sup>2</sup>
Terrazas	29,02 m <sup>2</sup>

## SÓTANO

Superficie Construida	120,17 m <sup>2</sup>
-----------------------	-----------------------

## GROUND FLOOR

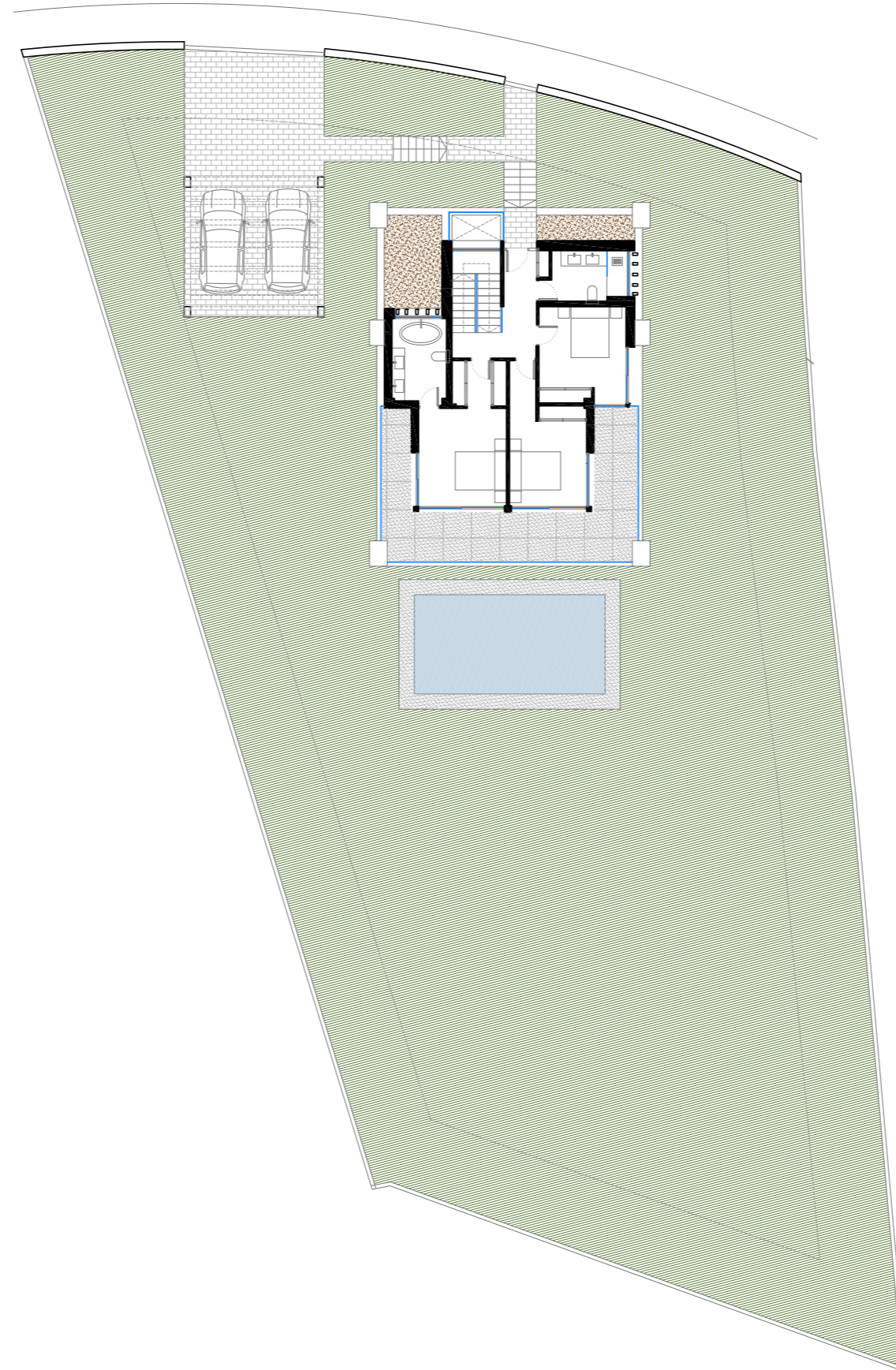
Built Area	98,05 m <sup>2</sup>
Covered Terraces	33,08 m <sup>2</sup>
Pool	34,8 m <sup>2</sup>

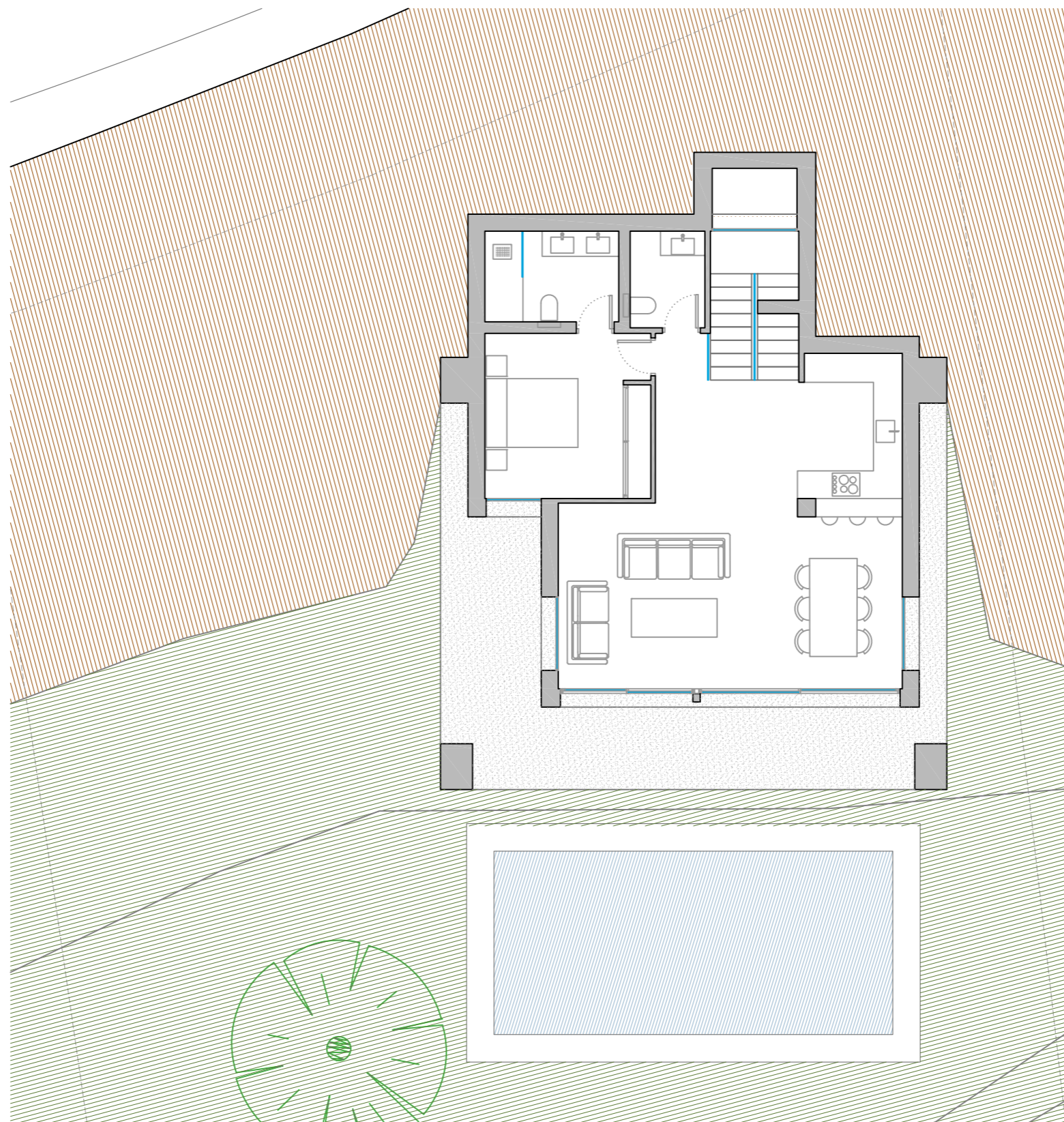
## FIRST FLOOR

Built Area	88,68 m <sup>2</sup>
Terraces	29,02 m <sup>2</sup>

## BASEMENT

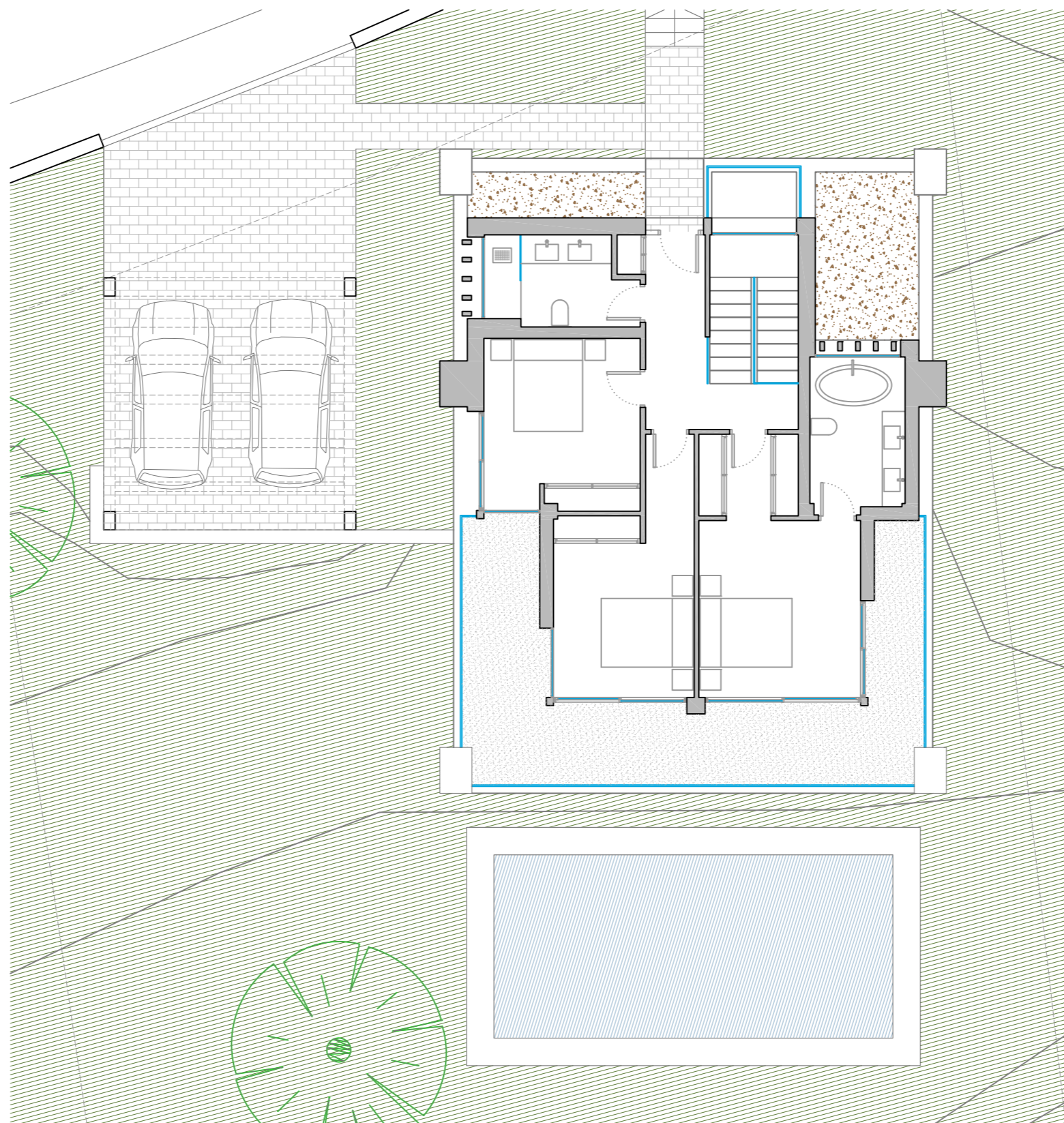
Built Area	120,17 m <sup>2</sup>
------------	-----------------------



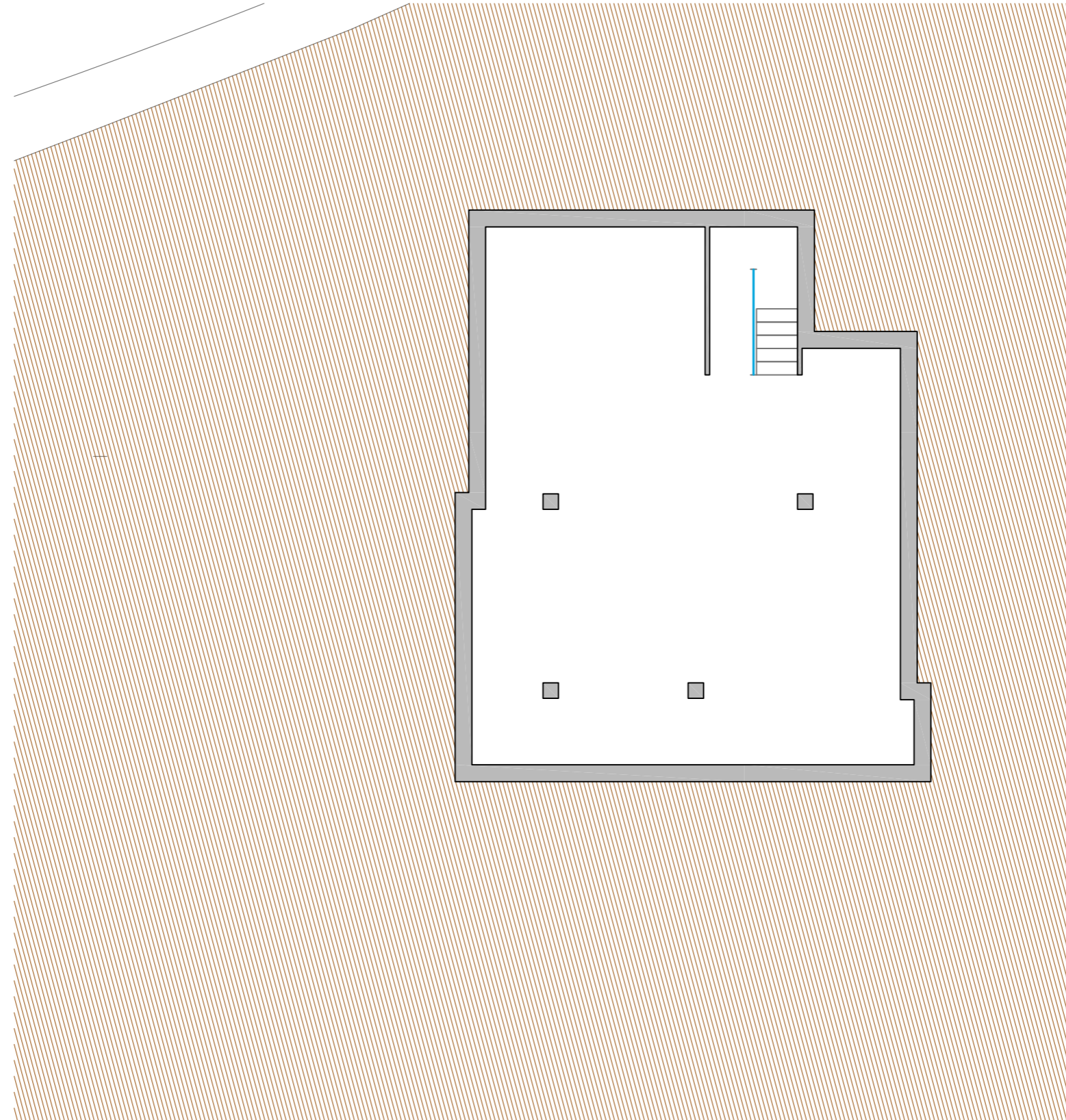


Built Area	98,05 m <sup>2</sup>
Covered Terraces	33,08 m <sup>2</sup>
Pool	34,8 m <sup>2</sup>





Built Area	88,68 m <sup>2</sup>
Terraces	29,02 m <sup>2</sup>



Built Area

120,17 m<sup>2</sup>