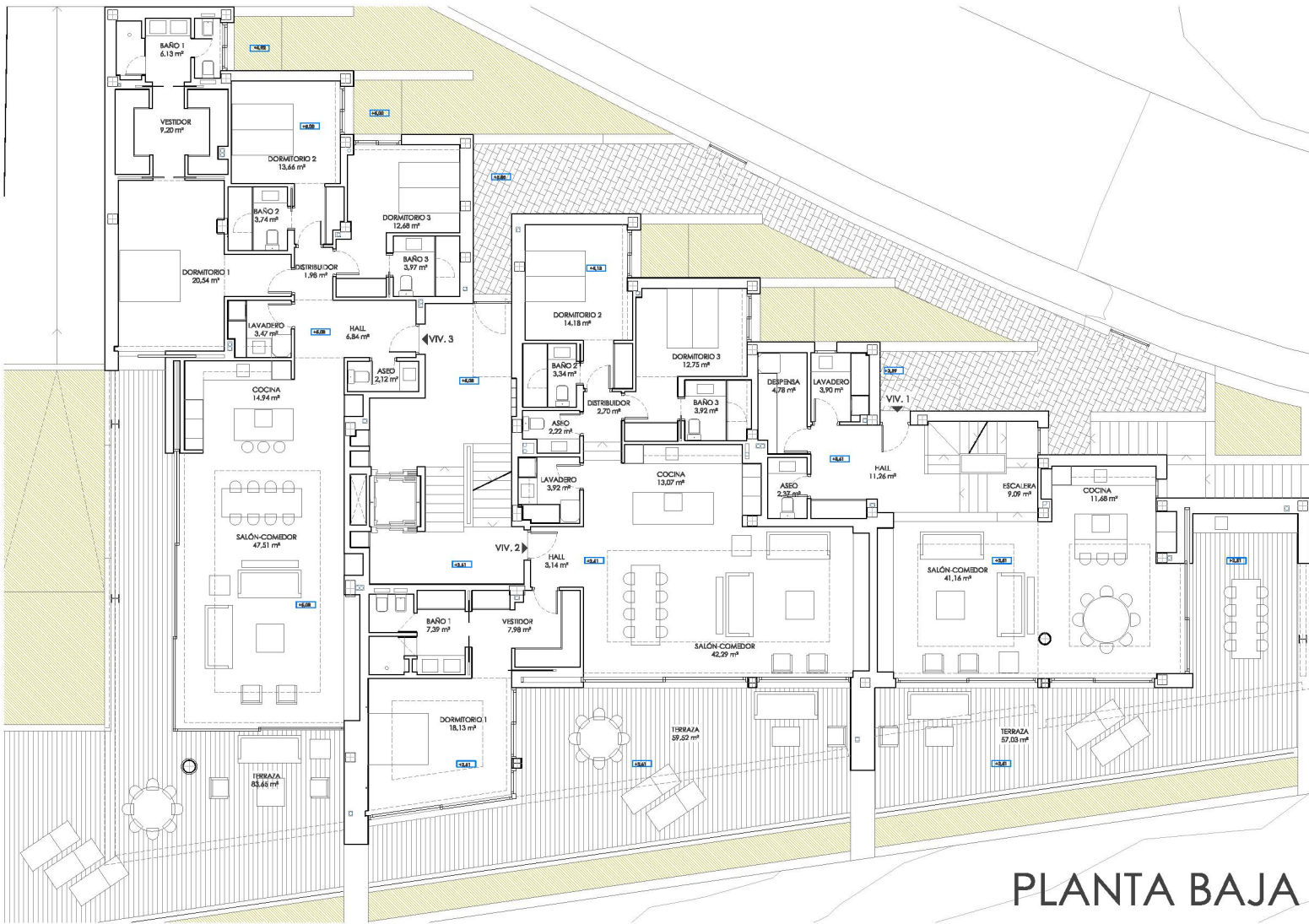
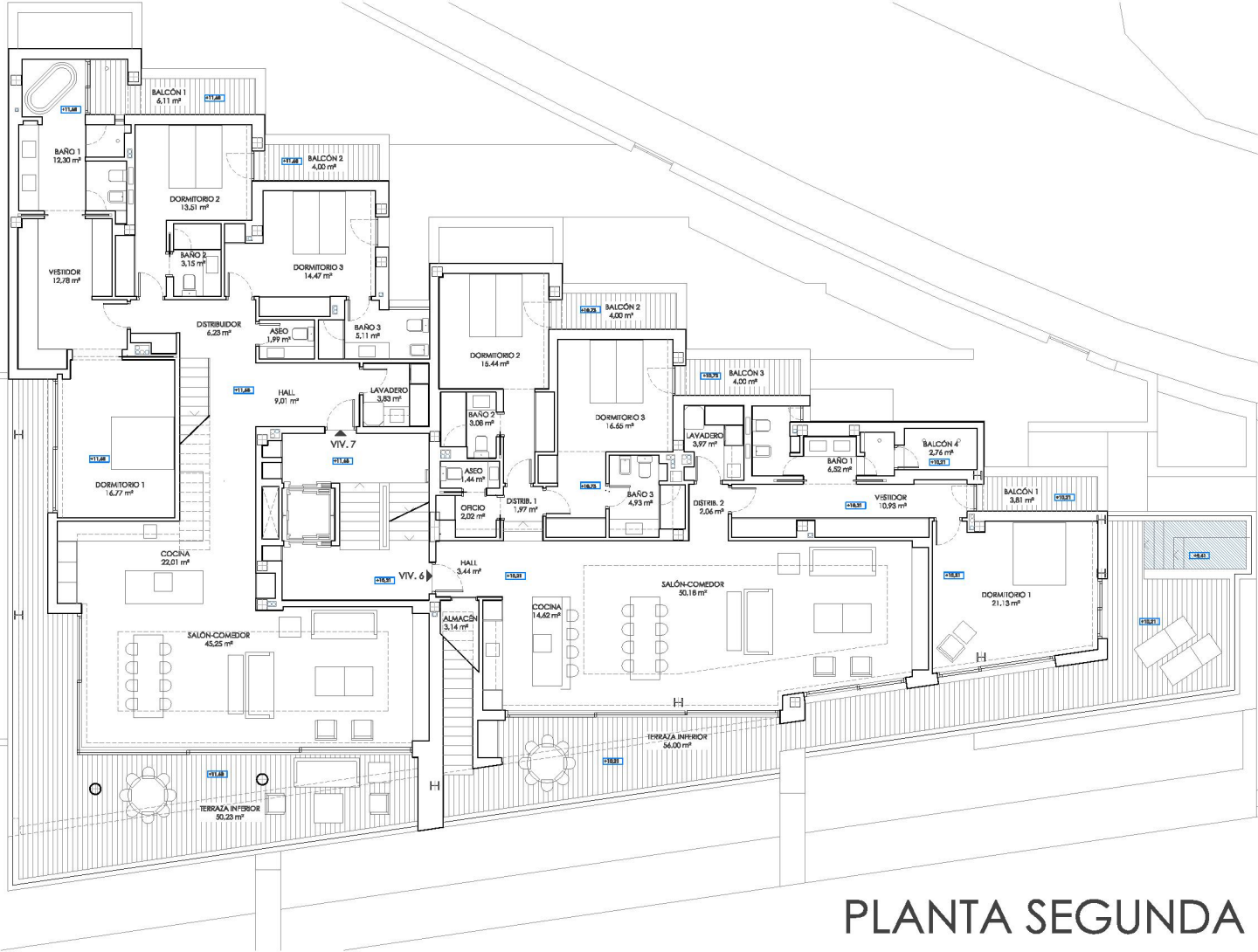


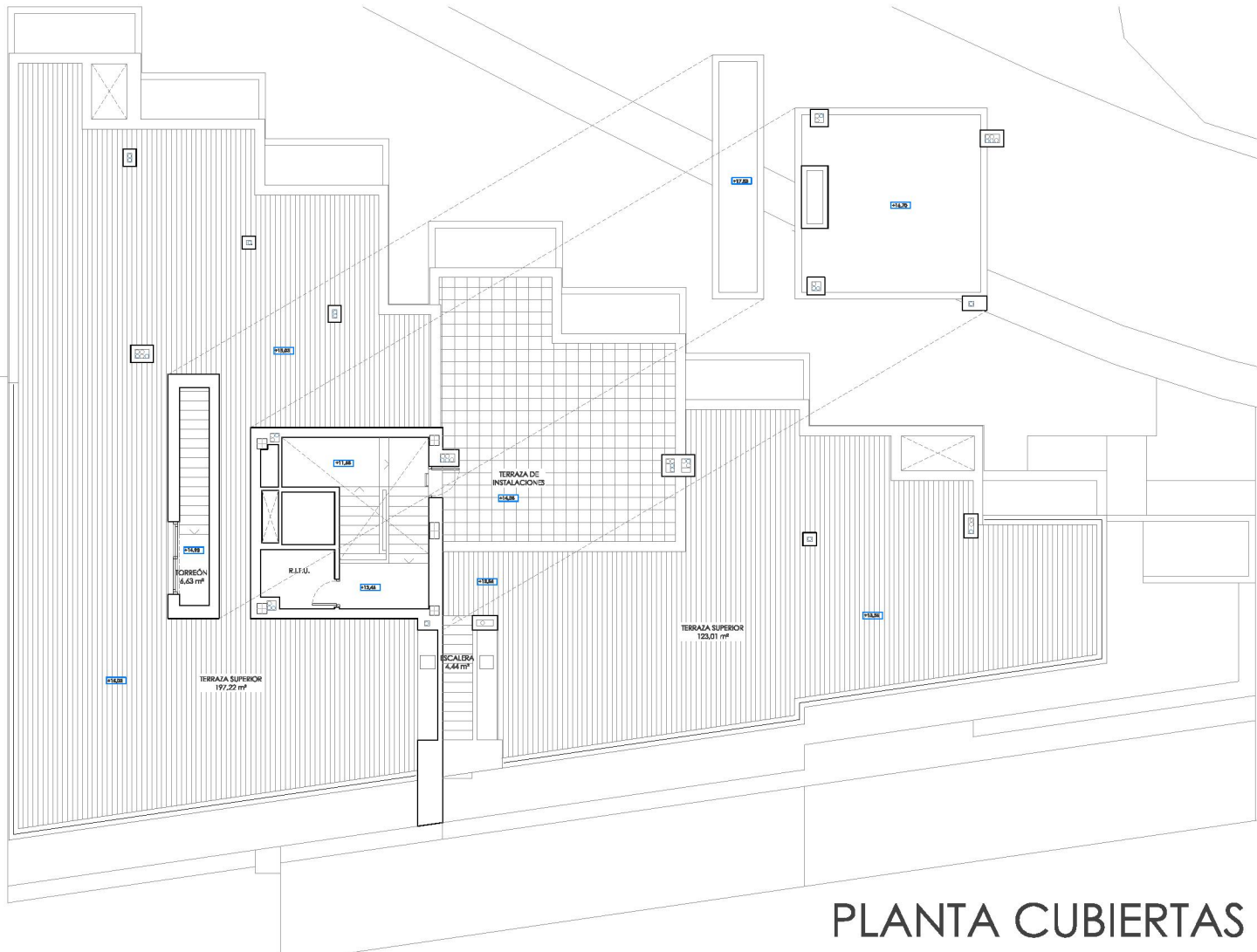
PLANTA PRIMERA



PLANTA BAJA



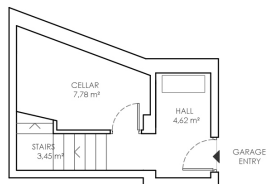
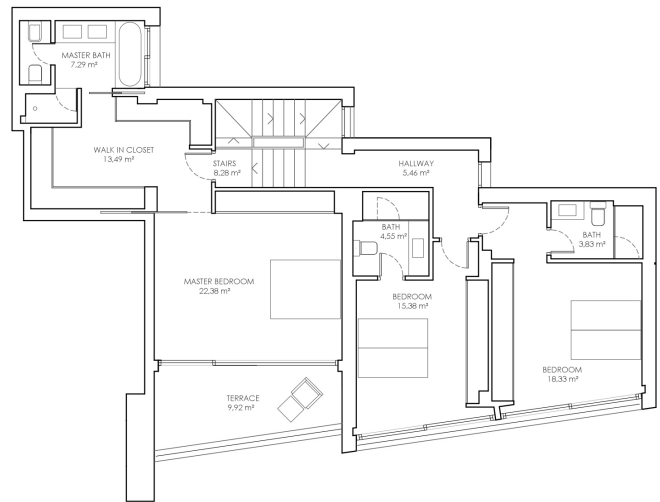
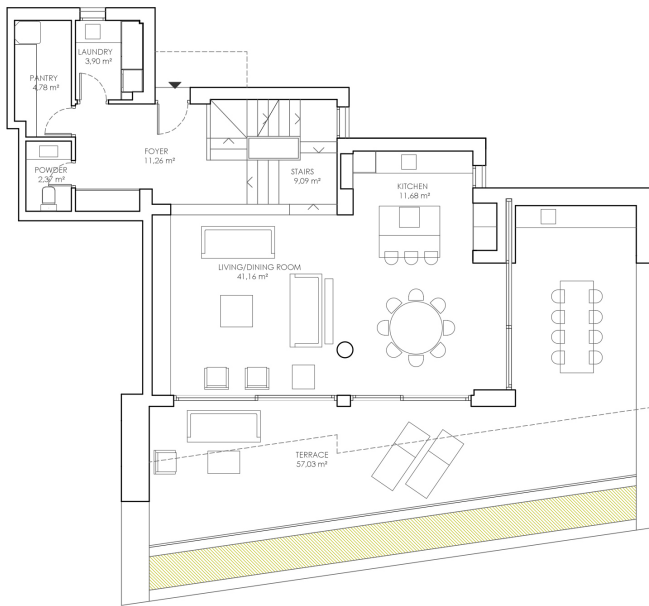
PLANTA SEGUNDA



PLANTA CUBIERTAS

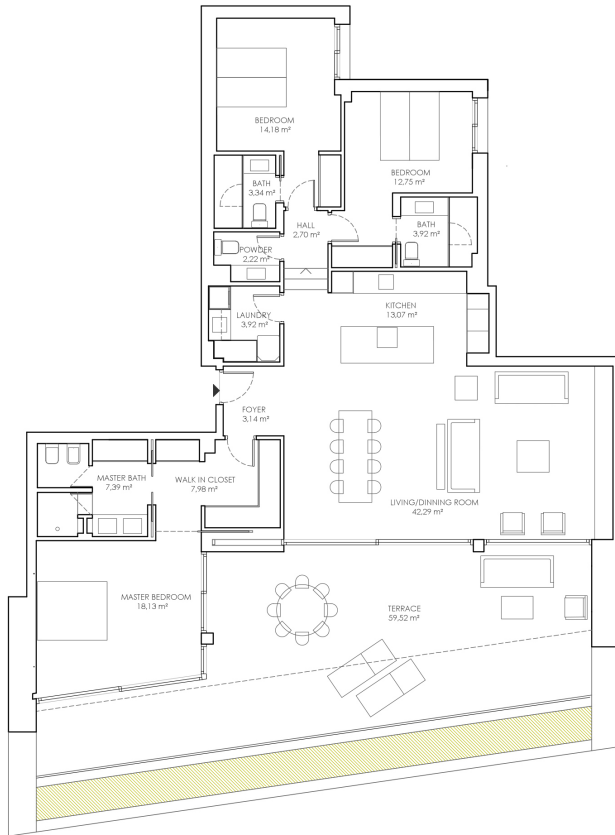


PLANTA SÓTANO



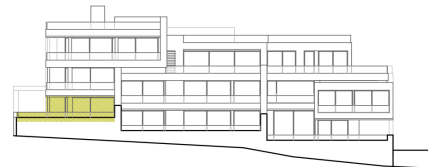
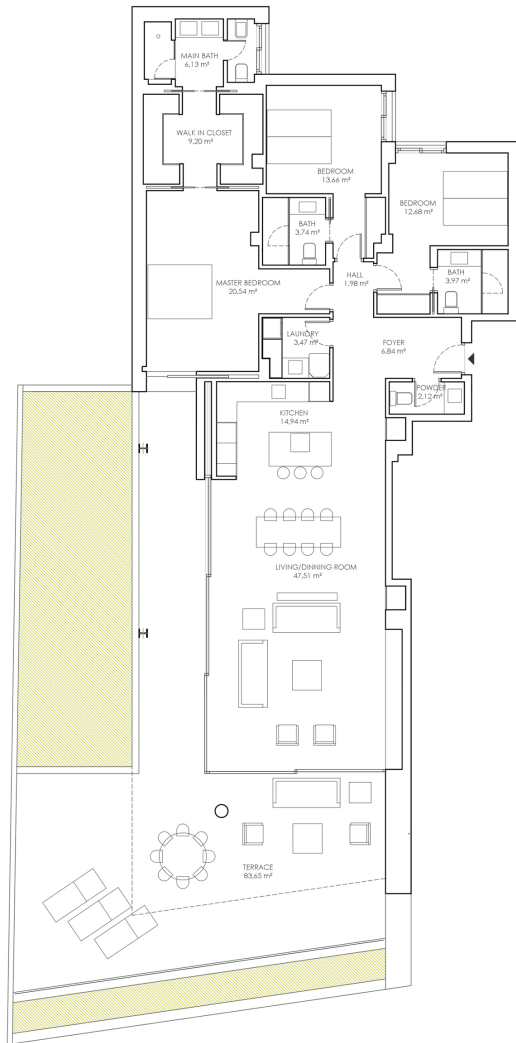
APARTMENT 1 (DUPLEX)
 TOTAL BUILT AREA: 359,79 m²
 (INCLUDING TERRACES AND P.P. OF COMMUNAL AREAS)





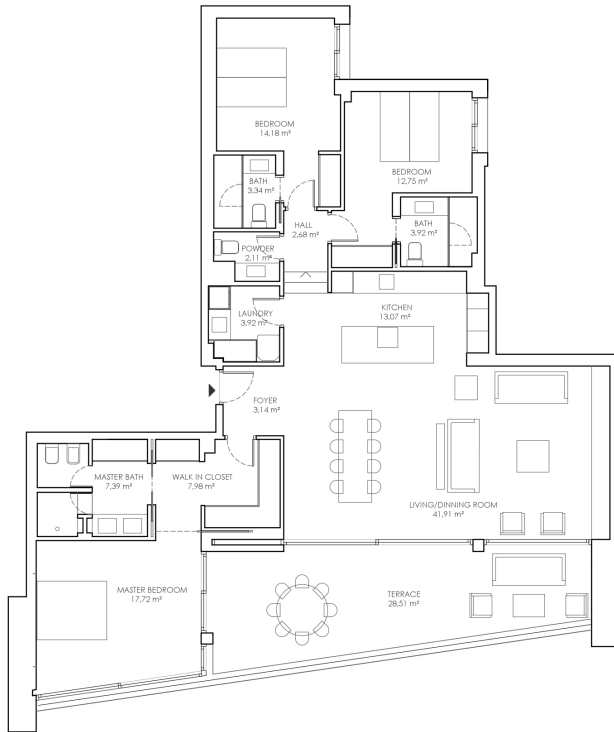
APARTMENT 2
 TOTAL BUILT AREA: 257.08 m²
 (INCLUDING TERRACES AND P.P. OF COMMUNAL AREAS)





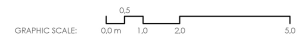
APARTMENT 3
 TOTAL BUILT AREA: 311,15 m²
 (INCLUDING TERRACES AND P.P. OF COMMUNAL AREAS)

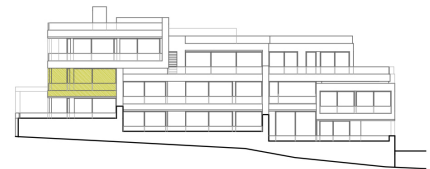
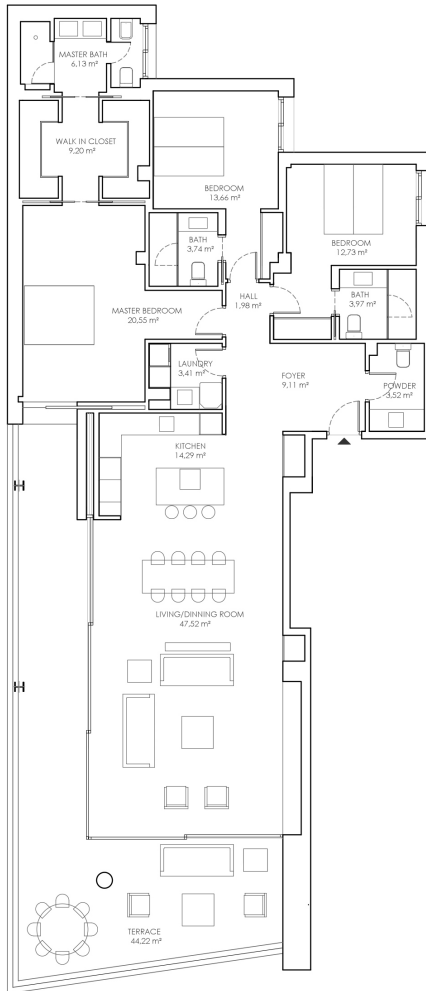




APARTMENT 4

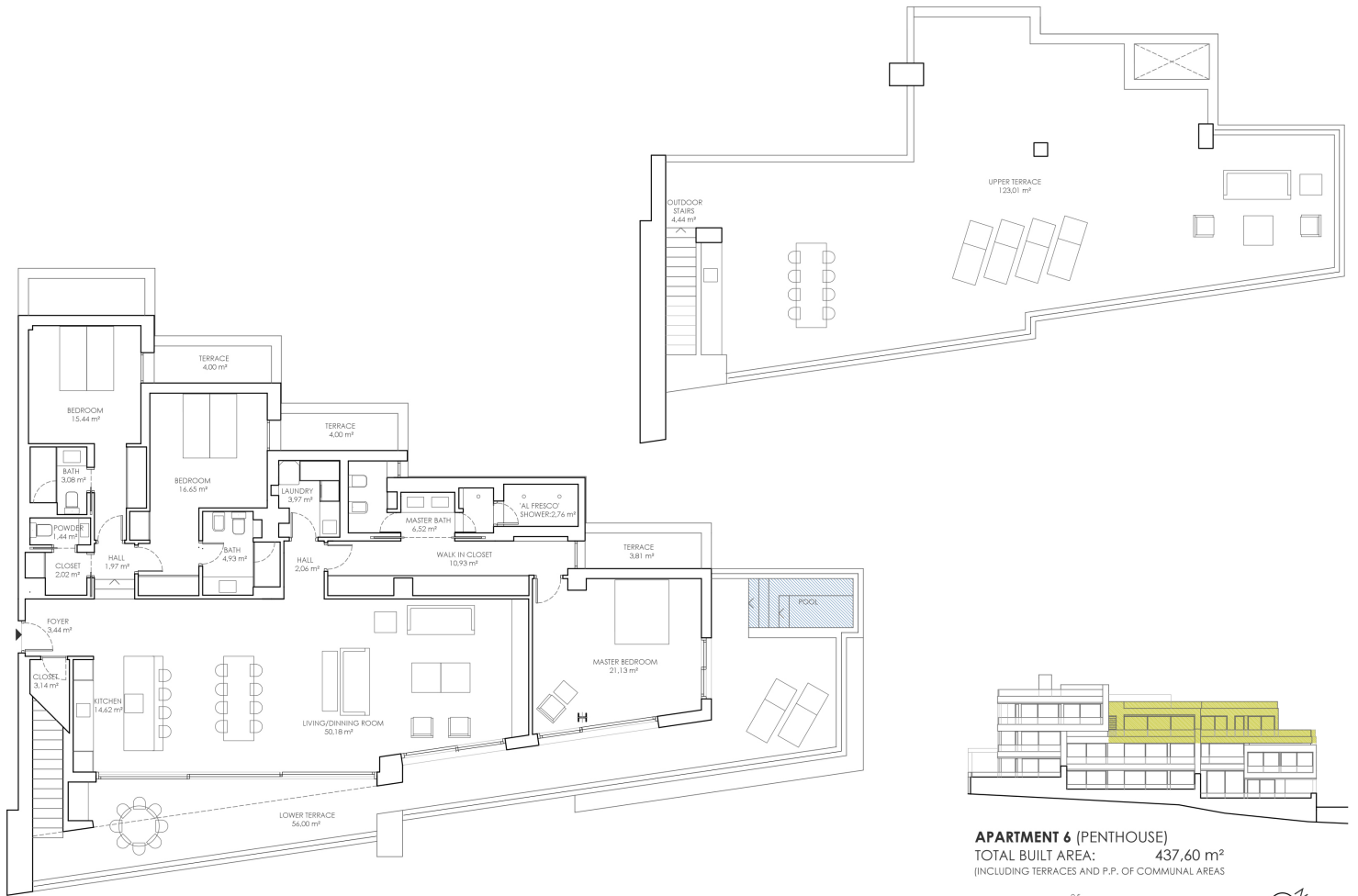
TOTAL BUILT AREA: 204.48 m²
 (INCLUDING TERRACES AND P.P. OF COMMUNAL AREAS)





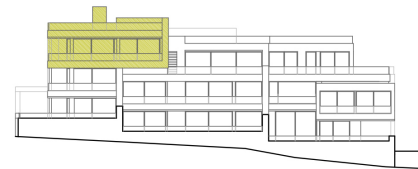
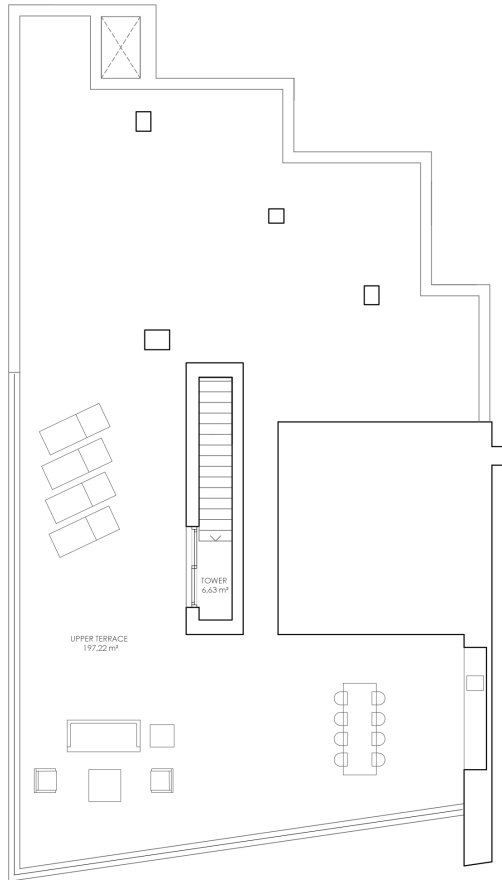
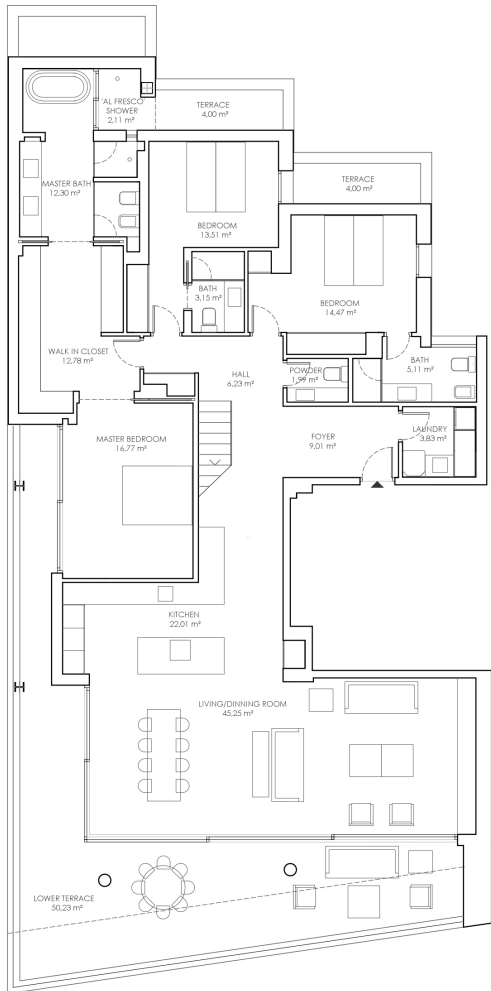
APARTMENT 5
 TOTAL BUILT AREA: 244,96 m²
 (INCLUDING TERRACES AND P.P. OF COMMUNAL AREAS)





APARTMENT 6 (PENTHOUSE)
TOTAL BUILT AREA: 437,60 m²
 (INCLUDING TERRACES AND P.P. OF COMMUNAL AREAS)





APARTMENT 7 (PENTHOUSE)
 TOTAL BUILT AREA: 515.53 m²
 (INCLUDING TERRACES AND P.P. OF COMMUNAL AREAS)

