

Scenic is a new concept to live in the home of your dreams with stowing sea views. Close to the the city centre and with all the services you can dream by your side.

Scenic  
Estepona Málaga



## A new Estepona dawns



SCENIC IS PERFECTLY LOCATED  
IN ESTEPONA

 5 mins: Estepona  
30 mins: Marbella  
1 h: Malaga

50 mins: Malaga airport  
1h Maria Zambrano train Station



Scenic  
Estepona Málaga

ESTEPONA

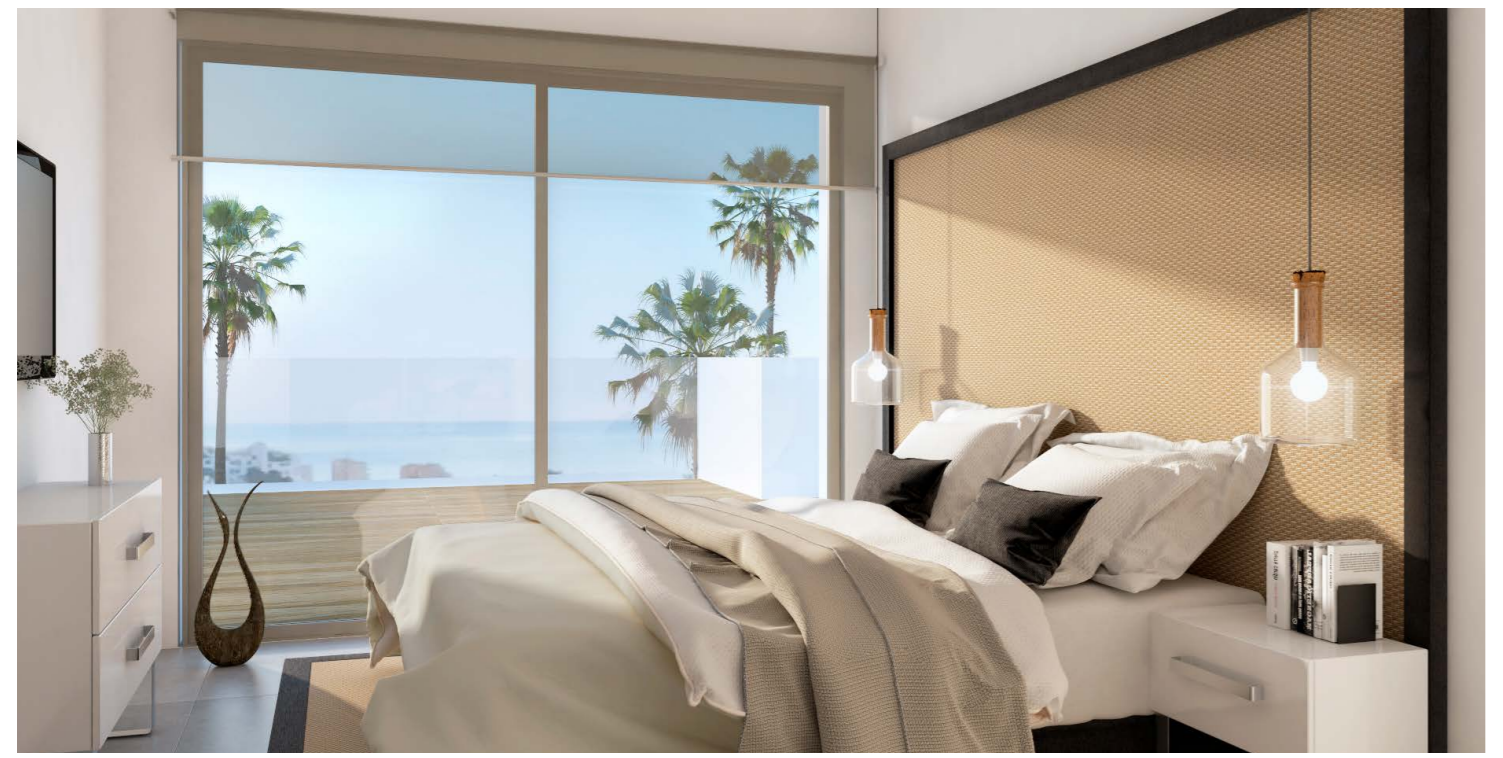
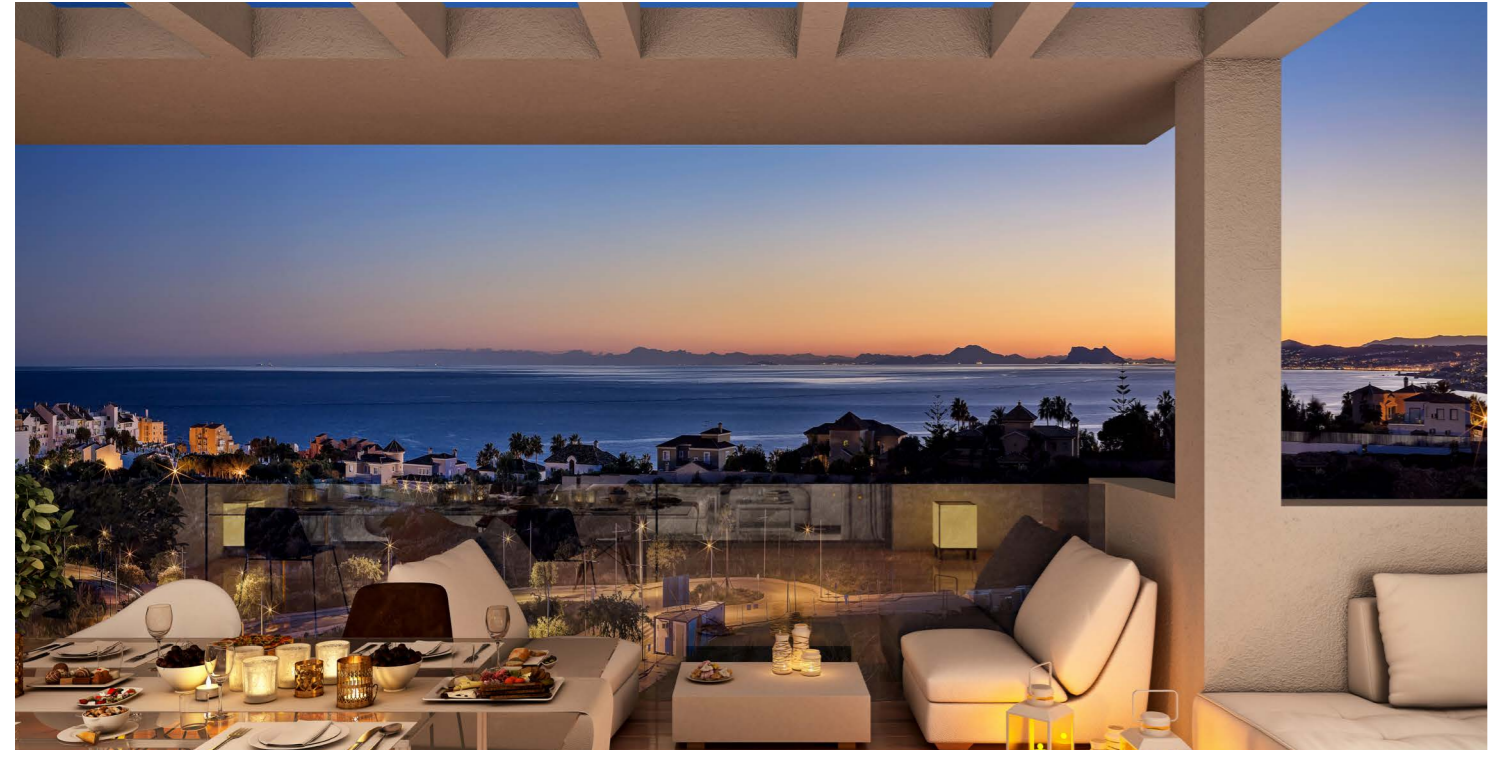
# Enjoy the panoramic see views from an idilic location

Scenic is a private estate with different types of dwellings: from ground floor apartments with private gardens to duplex penthouses with large terraces, perfect for enjoying the good climate of Estepona all year round.

Scenic differs from other developments in its sustainable architecture, friendly with the environment and its best-in-class quality finishes. The project aims to obtain the BREEAM International Certification.

It is organized into 7 separated blocks of dwellings boasting 1 to 5 bedrooms and spectacular terraces overlooking the sea.

17 beaches make up the Estepona coast: more than 21km of golden sand, warm water ans exciting environment



- 74 apartments
- Swimming pool
- 1 to 5-bedroom homes
- Gym area
- See panoramic views
- Storage room and 2 parking spaces
- Best-in-class quality finishes
- Aims to obtain BREEAM® Certificate



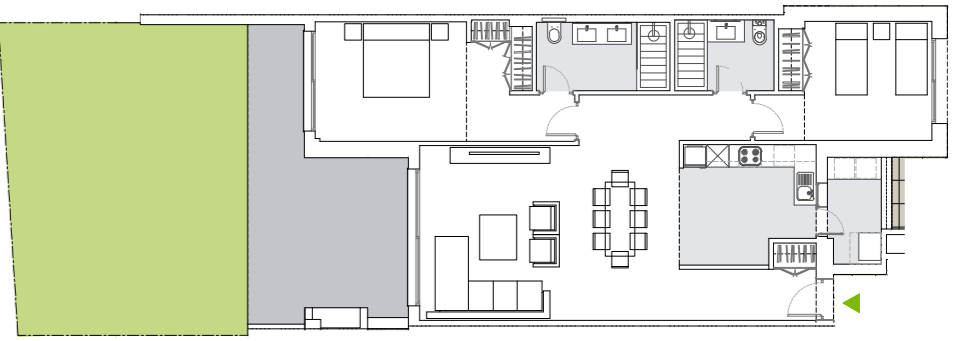
Scenic is situated in one of the noblest areas of Estepona, surrounding the Parque de las Mesas. Its prime location allows you to enjoy spectacular sunsets and offers you the best views over the Mediterranean coast.

Nearby are large shopping and garden areas, sports facilities, schools, health centres, hospitals and golf courses. The Estepona Marina, with its great gastronomic and leisure offer, is only 700 metres away. Scenic is nestled in a unique natural surrounding where to breathe tranquillity, yet within walking distance to the Estepona Marina or to the historic centre.

With easy access to the A7 and AP7 motorways, the centre of Malaga, the airport or the train station are only a short drive away.

## 2 BEDROOMS HOME FLOOR PLAN

- 2
- 2
- 238.01 sq m
- 54.77 sq m



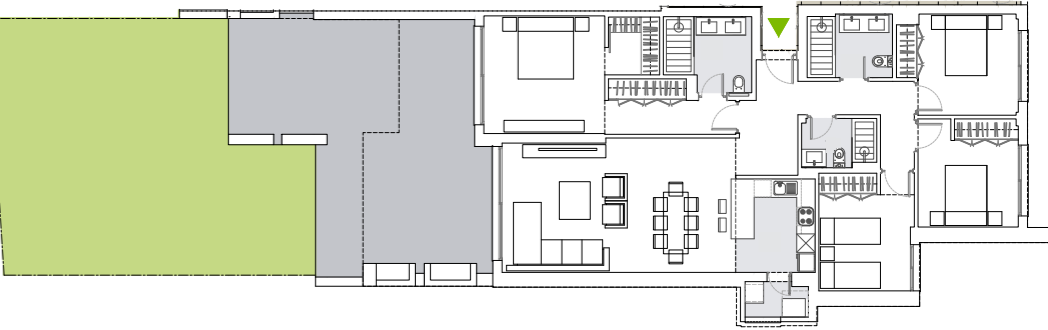
## 3 BEDROOMS HOME FLOOR PLAN

- 3
- 3
- 246.75 sq m
- 31.27 sq m



## 4 BEDROOMS HOME FLOOR PLAN

- 4
- 3
- 328.75 sq m
- 74.90 sq m



**A B C D E**  
Energetic Certification: A

Images are indicative only // Information, sale and delivery of D.I.A. document (according to Spanish Legislation and to Decree 218/2005) in Scenic's Sales Office