



VISTA LAGO
RESIDENCES



N°1
VILLA AZURE



Nº1 VILLA AZURE

Each design-led home at Vista Lago will be quite unlike anything that has gone before. In a climate that lends itself to outdoor living, these villas will work as well outside as they do inside, if one can tell the difference. The outside/inside concept is found in each villa, with the lounge and terrace seamlessly merging into one huge living space.

In key parts of the villas, both at ground level and upstairs, the windows will disappear into the walls, ensuring perfectly clear views and bringing the outside in. A combination of custom-designed furniture and world-leading brands along with a stunning selection of artwork makes a Vista Lago home something to be truly proud of.





Nº1 VILLA AZURE

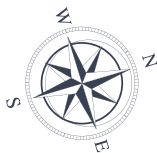
GROUND FLOOR	143,18 m ²
FIRST FLOOR	112,81 m ²
BASEMENT	225,15 m ²
TOTAL	481,14 m²

PORCHES	3,29 m ²
TERRACES	45,64 m ²
PERGOLAS	82,64 m ²
CARPORT	39,33 m ²
COMMUNAL AREAS	8,70 m ²
TOTAL CONSTRUCTED	660,74 m²

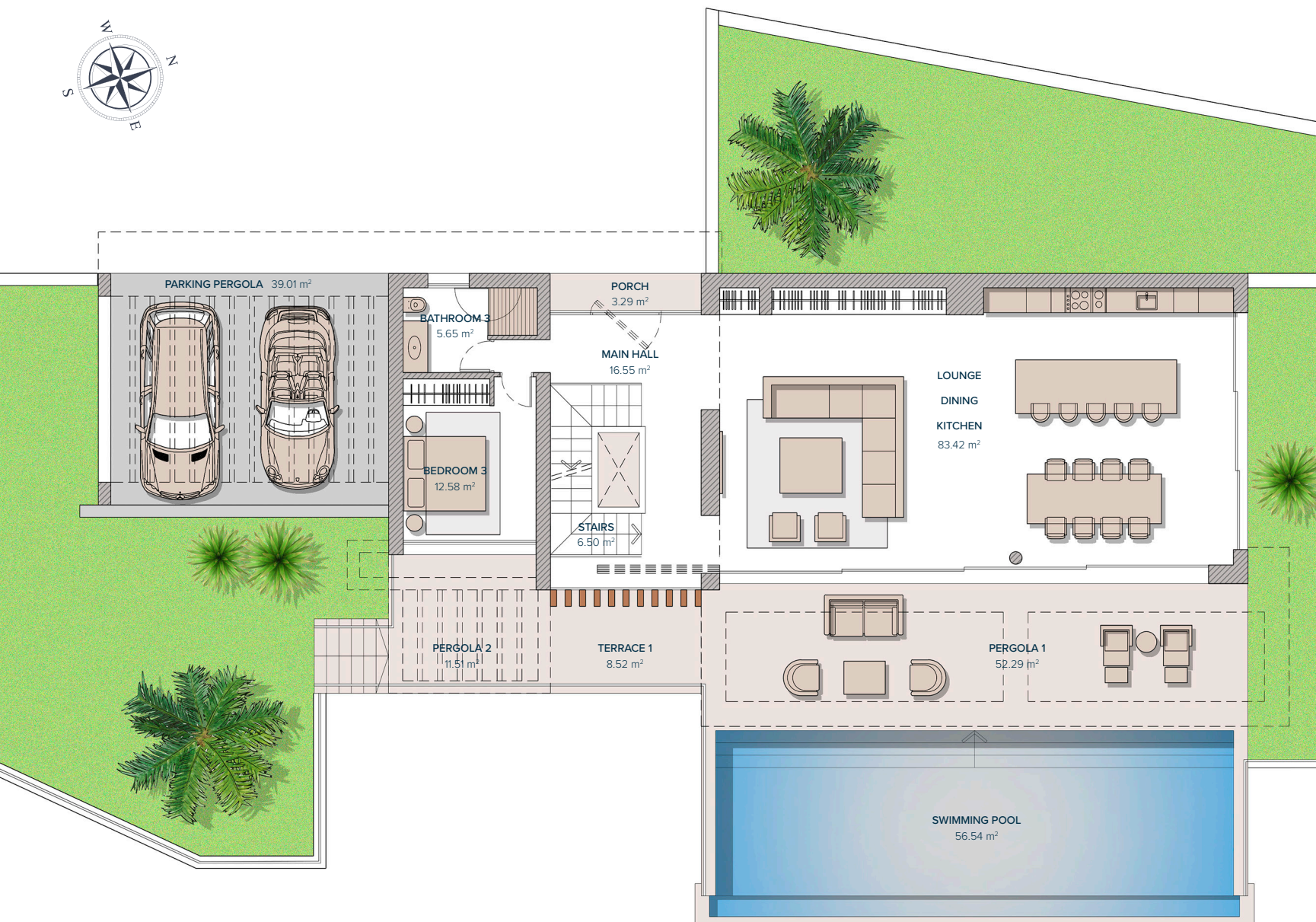
PLOT	2.347,00 m²
GARDEN	302,95 m ²
SWIMMING POOL	56,54 m ²
TOTAL USEFUL AREA	453,05 m²
DECREE 218/2005	

These images are not contractual but only for illustrative purposes. The images are subject to technical, legal or commercial modifications approved by the project management or the competent authority. The 3D images corresponding to the facades, common elements, and the rest of the spaces are merely indicative and will be subject to verification or Modification in the technical projects. The furniture of the 3D images is not included and the equipment of the villas will be indicated in the corresponding building and quality specifications. The energy certification corresponds with the one established in the project in process. All the information and documentation will be provided according to the terms established in the Royal Decree 515/1989 and in the rest of the autonomous or state regulations currently in force that could complement the Mentioned Decree.





Nº1 VILLA AZURE GROUND FLOOR



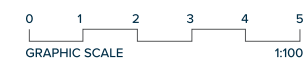
LIVING AREA

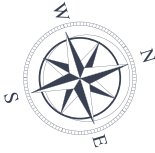
ENTRANCE	16,55 m ²
STAIRS	6,50 m ²
LOUNGE- DINING-KITCHEN	83,42 m ²
BATHROOM 3	5,65 m ²
BEDROOM 3	12,58 m ²
TOTAL	124,70 m²

ACCESS & TERRACES

PORCH ACCESS	3,29 m ²
PARKING (PERGOLA)	39,01 m ²
TERRACE 1	8,52 m ²
PERGOLA 1	52,29 m ²
PERGOLA 2	11,51 m ²
TOTAL	114,62 m²

	1
Entrance	0
	-1





Nº1 VILLA AZURE

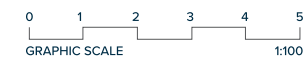
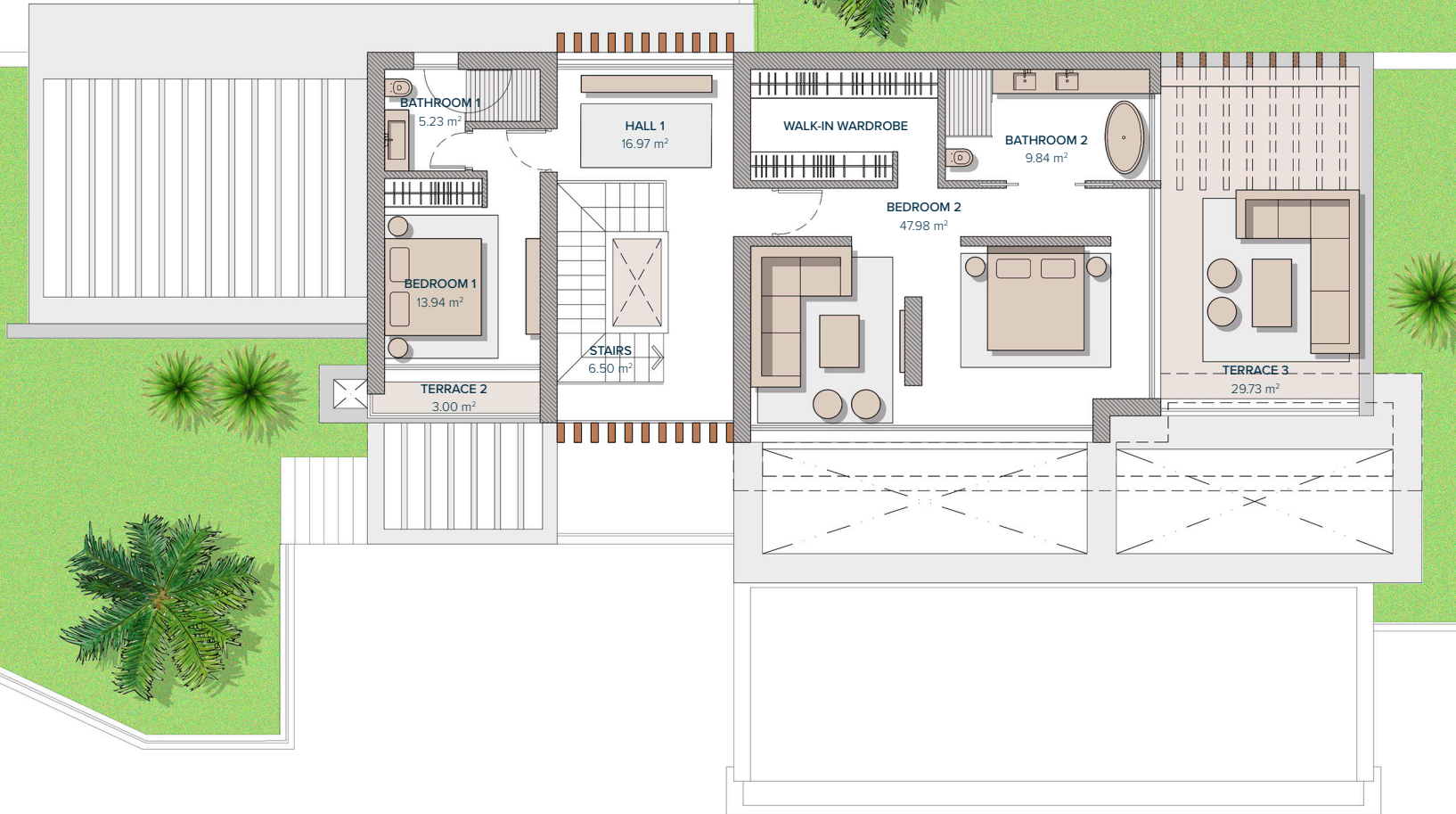
FIRST FLOOR

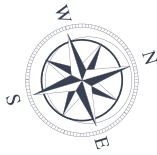
BEDROOMS

HALL 1	16,97 m ²
STAIRS	6,50 m ²
BATHROOM 1	5,23 m ²
BEDROOM 1	13,94 m ²
BEDROOM 2	47,98 m ²
BATHROOM 2	9,84 m ²
TOTAL	100,46 m²

TERRACES

TERRACE 2	3,00 m ²
TERRACE 3	29,73 m ²
TOTAL	32,73 m²





Nº1 VILLA AZURE

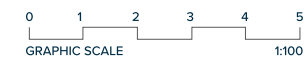
BASEMENT



HALL 2	14,27 m ²
AREA 1	17,13 m ²
AREA 2	63,84 m ²
AREA 3	38,55 m ²
AREA 4	8,04 m ²
STAIRS	4,77 m ²
MACHINERY ROOM	31,26 m ²
LAUNDRY	7,04 m ²
PATIO	1,80 m ²
TOTAL	186,70 m²

1
0
-1

Entrance



These images are not contractual but only for illustrative purposes. The images are subject to technical, legal or commercial modifications approved by the project management or the competent authority. The 3D images corresponding to the facades, common elements, and the rest of the spaces are merely indicative and will be subject to verification or Modification in the technical projects. The furniture of the 3D images is not included and the equipment of the villas will be indicated in the corresponding building and quality specifications. The energy certification corresponds with the one established in the project in process. All the information and documentation will be provided according to the terms established in the Royal Decree 515/1989 and in the rest of the autonomous or state regulations currently in force that could complement the Mentioned Decree.



Nº1 VILLA AZURE

