



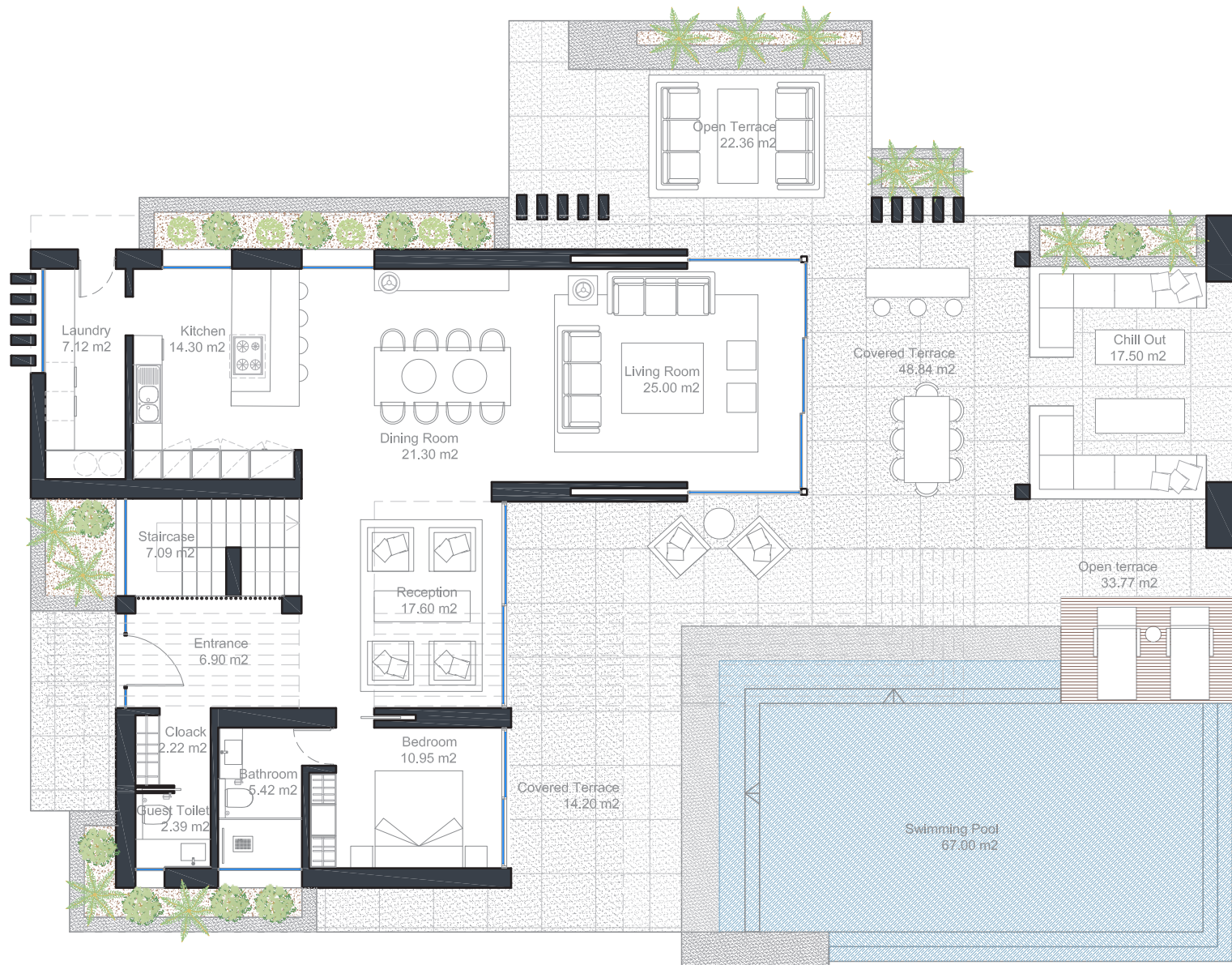
-  Ground floor Sea Views
-  First Floor Sea Views

Masterplan Project

Extensive and flat garden
with Panoramic Sea Views
400-510 m²

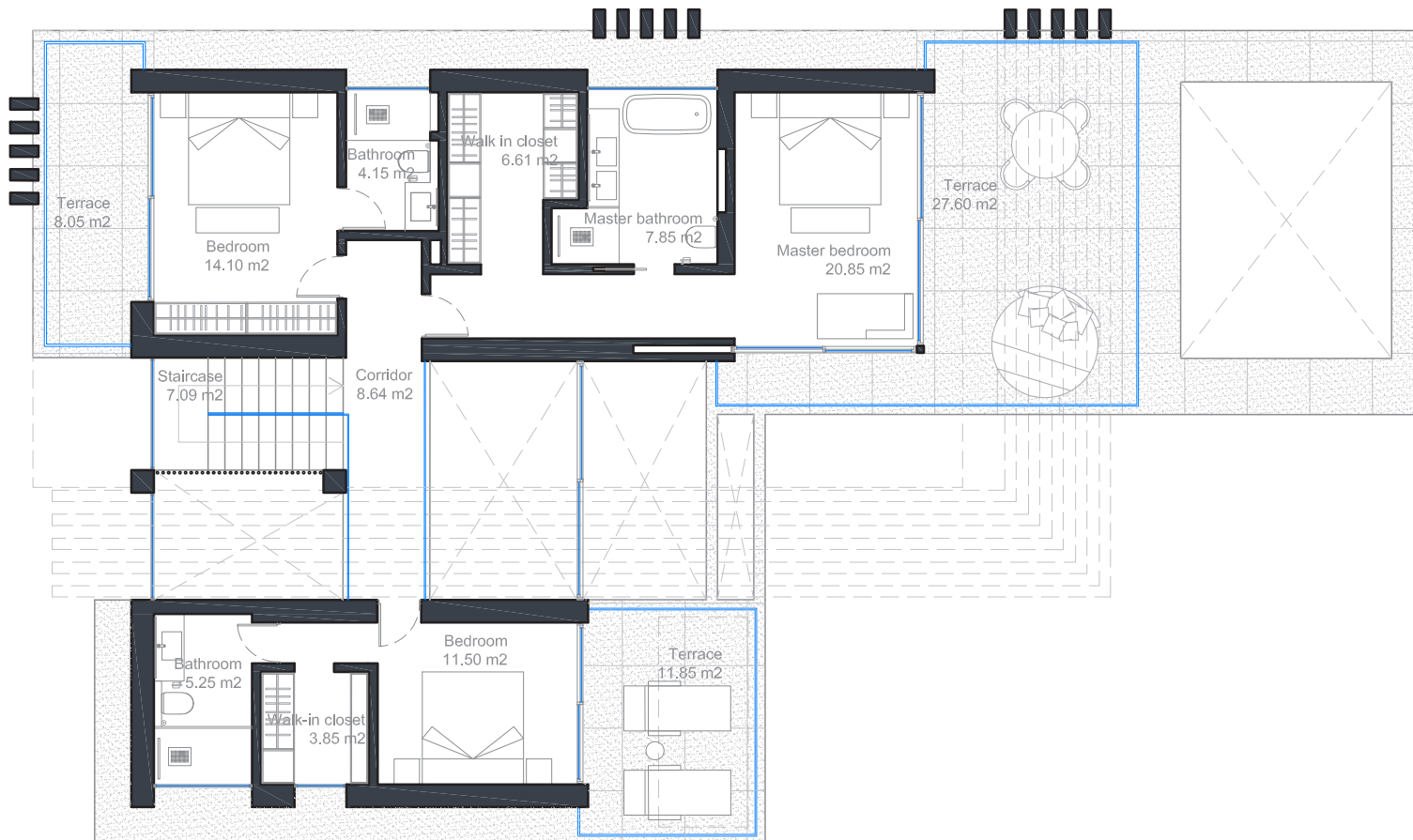


Masterplan Villa Type A



Built Living Area: 147 m²
 Covered Terraces: 91 m²
 Uncovered Terraces: 127 m²
 Swimming Pool: 60 m²

Ground Floor Villa Type A



Built Living Area: 138 m²
 Covered Terraces: 48 m²

First Floor Villa Type A

OPTIONAL EXTRAS

Basement Villa Type A

(Same finishes as the rest of the villa)
176.400 €



Built Living Area: 144 m²

Extras

Spa..... 37.050 €
Including: Jacuzzi, sauna and spa shower



Cinema..... 5.800 €
Including: Projector, projector screen and sound system

Wine cellar..... 9.500 €
Including: Wine rack, air conditioner and glass door

OPTIONAL EXTRAS

Roof Terrace Villa Type A

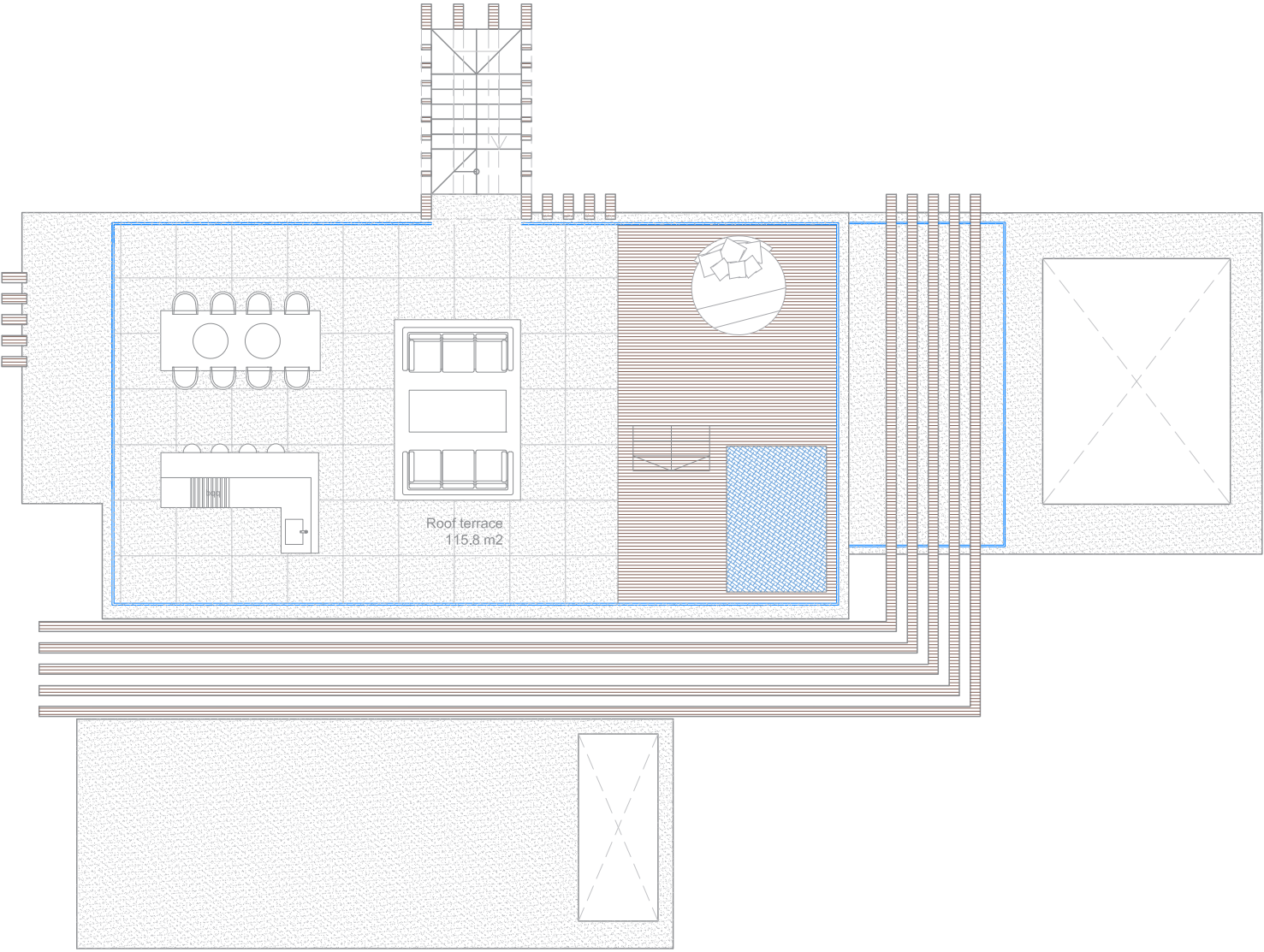
Including: Exterior access staircase
38.700 €

Extras

Glass balustrade.... 17.150€

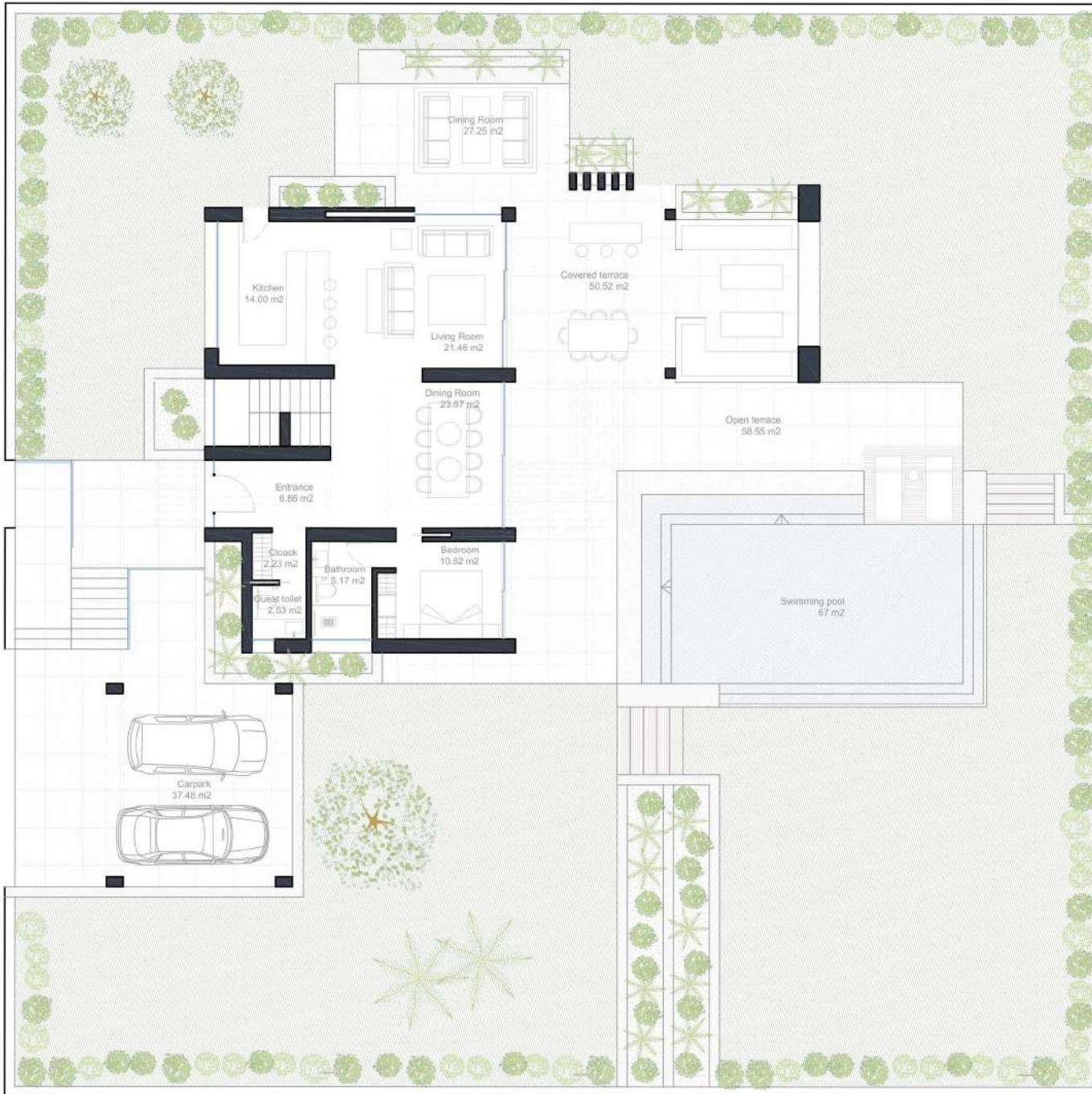
Jacuzzi..... 18.500 €
Including: Wooden deck in two levels

BBQ with bar and sink..... 9.500 €



Uncovered Terraces: 115 m²

Extensive and flat garden
with Panoramic Sea Views
450-630 m²

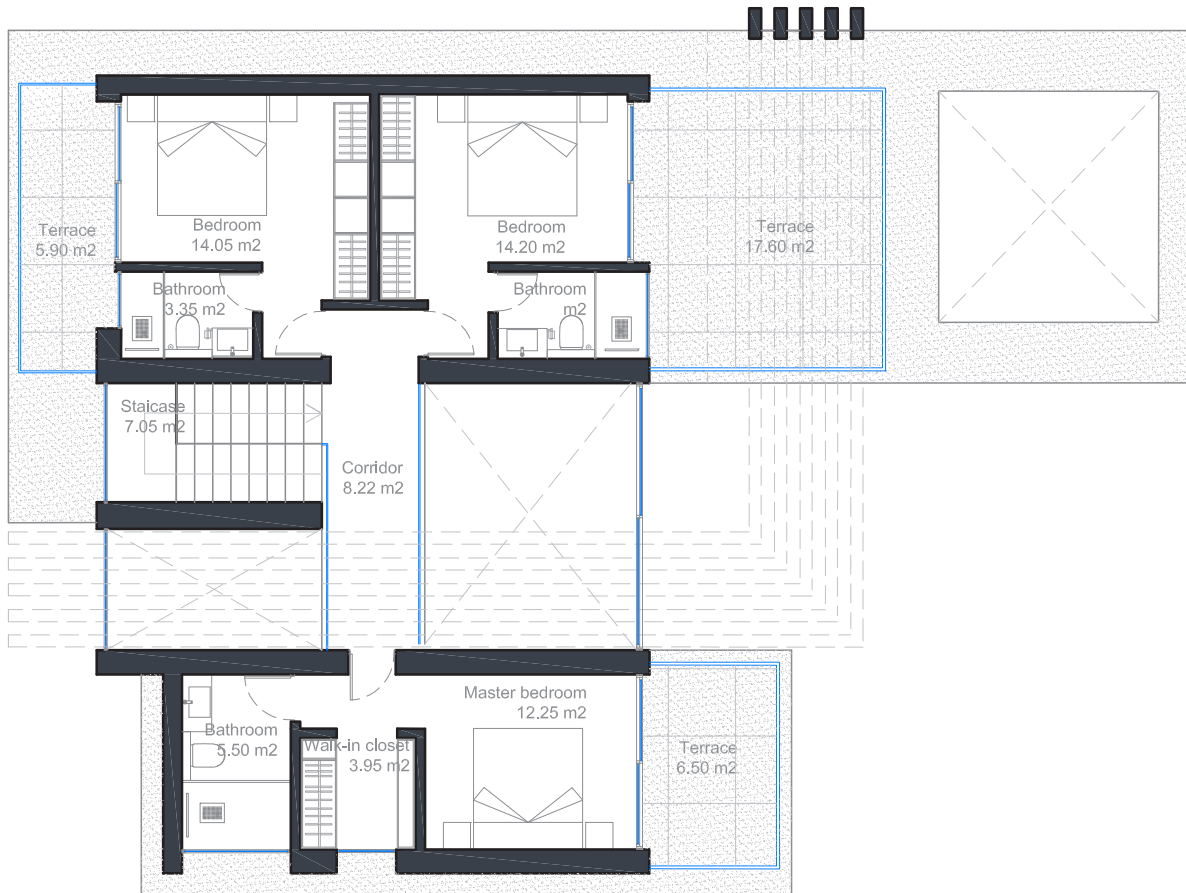


Masterplan Villa Type B



Built Living Area: 117 m²
 Covered Terraces: 97 m²
 Uncovered Terraces: 92 m²
 Swimming Pool: 58 m²

Ground Floor Villa Type B



Built Living Area: 116 m²
 Covered Terraces: 30 m²

First Floor Villa Type B

OPTIONAL EXTRAS

Basement Villa Type B

(Same finishes as the rest of the villa)

127.050 €



Built Living Area: 113 m²

Extras

Spa..... 37.050 €
Including: Jacuzzi, sauna and spa shower



Cinema..... 5.800 €
Including: Projector, projector screen and sound system

Wine cellar..... 9.500 €
Including: Wine rack, air conditioner and glass door

OPTIONAL EXTRAS

Roof Terrace Villa Type B

Including: Exterior access staircase

29.550 €

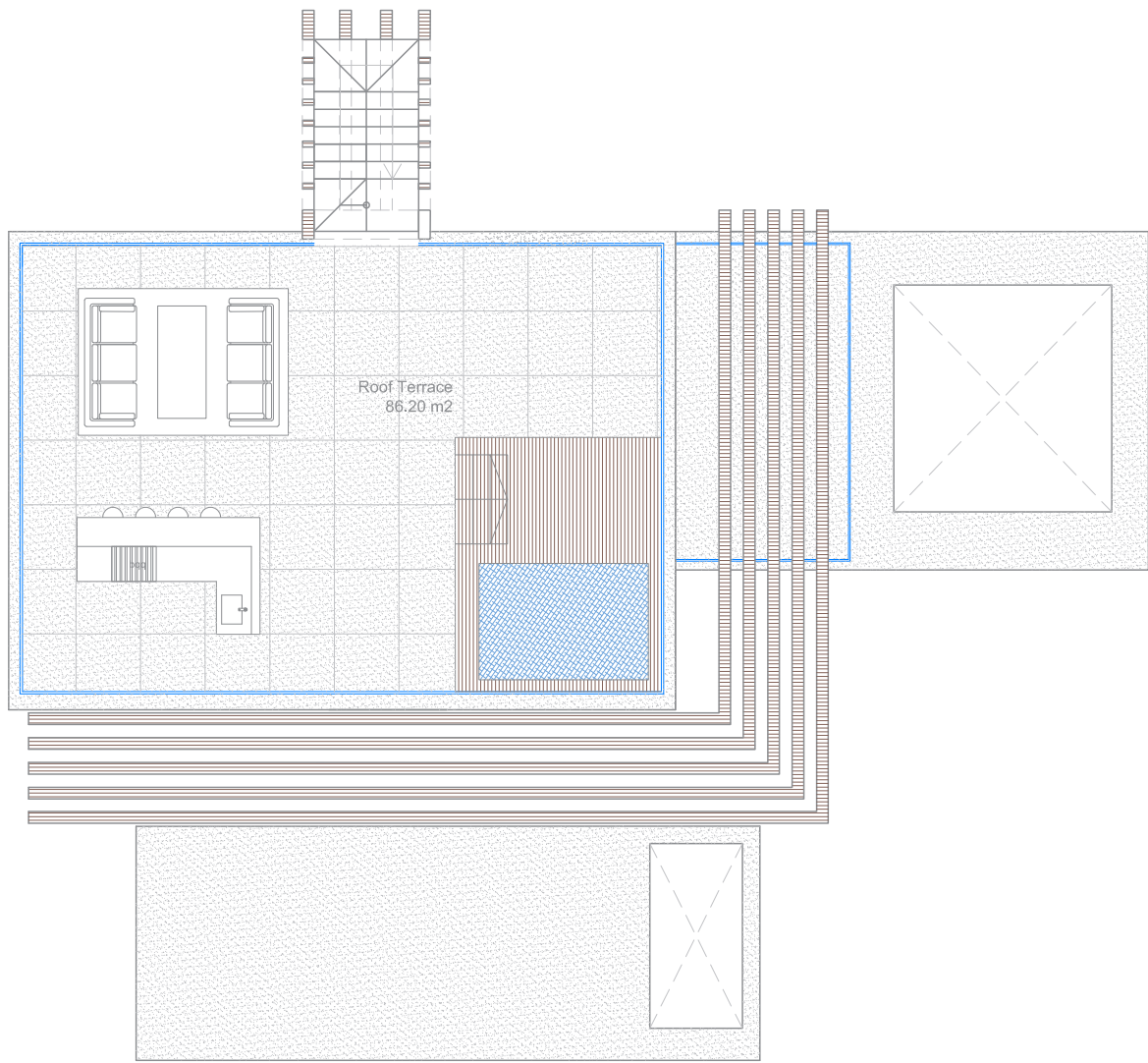
Extras

Glass balustrade.... 14.300€

Jacuzzi..... 15.500 €

Including: Wooden deck in two levels

BBQ with bar and sink..... 9.500 €

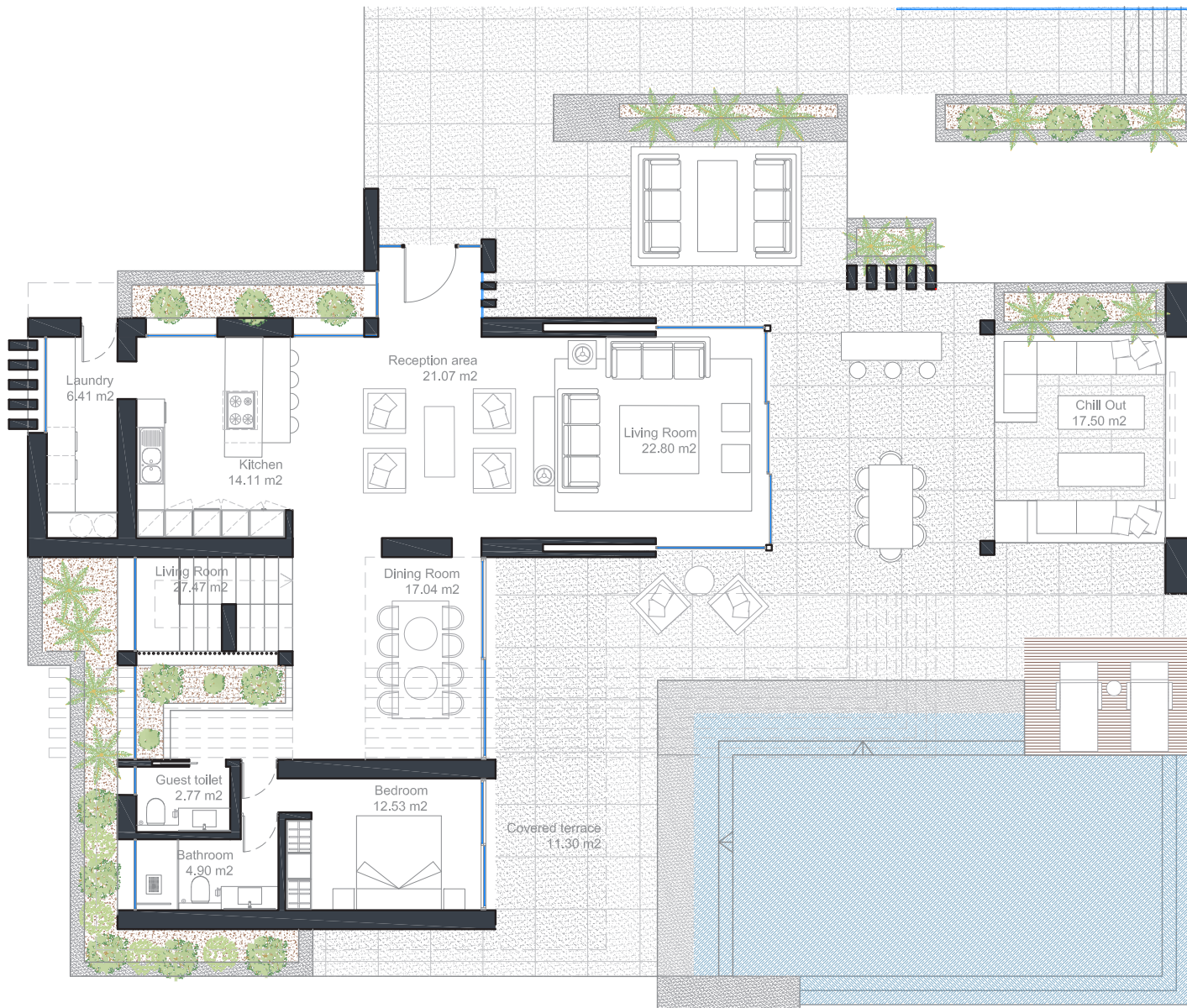


Uncovered Terraces: 86 m²

Extensive and flat garden
with Panoramic Sea Views
505-525 m²

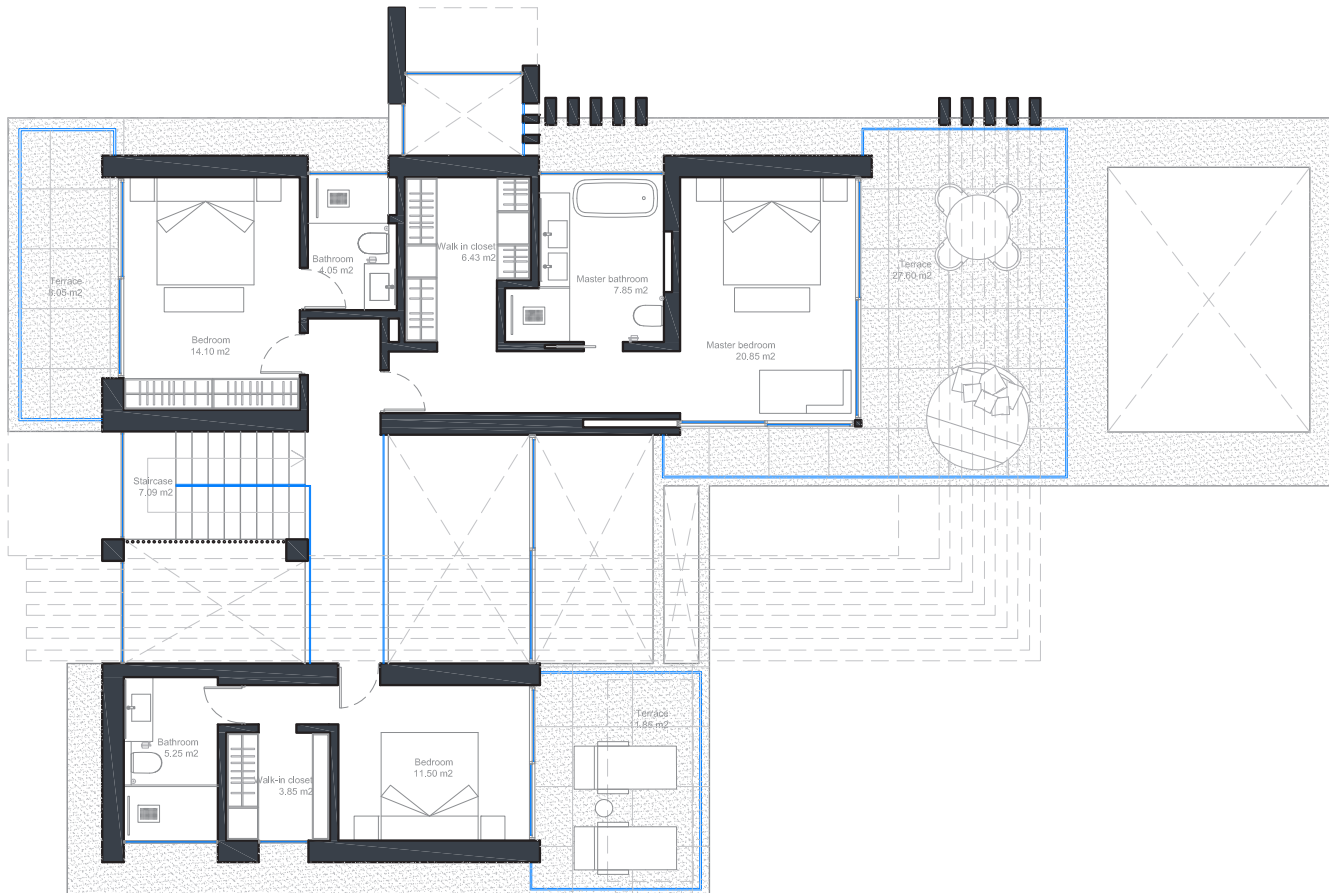


Masterplan Villa Type C



Built Living Area: 152 m²
 Covered Terraces: 91 m²
 Uncovered Terraces: 127 m²
 Swimming Pool: 60 m²

Ground Floor Villa Type C



Built Living Area: 138 m²
 Covered Terraces: 48 m²

First Floor Villa Type C

OPTIONAL EXTRAS

Basement Villa Type C

(Same finishes as the rest of the villa)

176.400 €

Extras

Spa..... 37.050 €
Including: Jacuzzi, sauna and spa shower



Cinema..... 5.800 €
Including: Projector, projector screen and sound system

Wine cellar..... 9.500 €
Including: Wine rack, air conditioner and glass door



Built Living Area: 144 m²

OPTIONAL EXTRAS

Roof Terrace Villa Type C

Including: Exterior access staircase

38.700 €

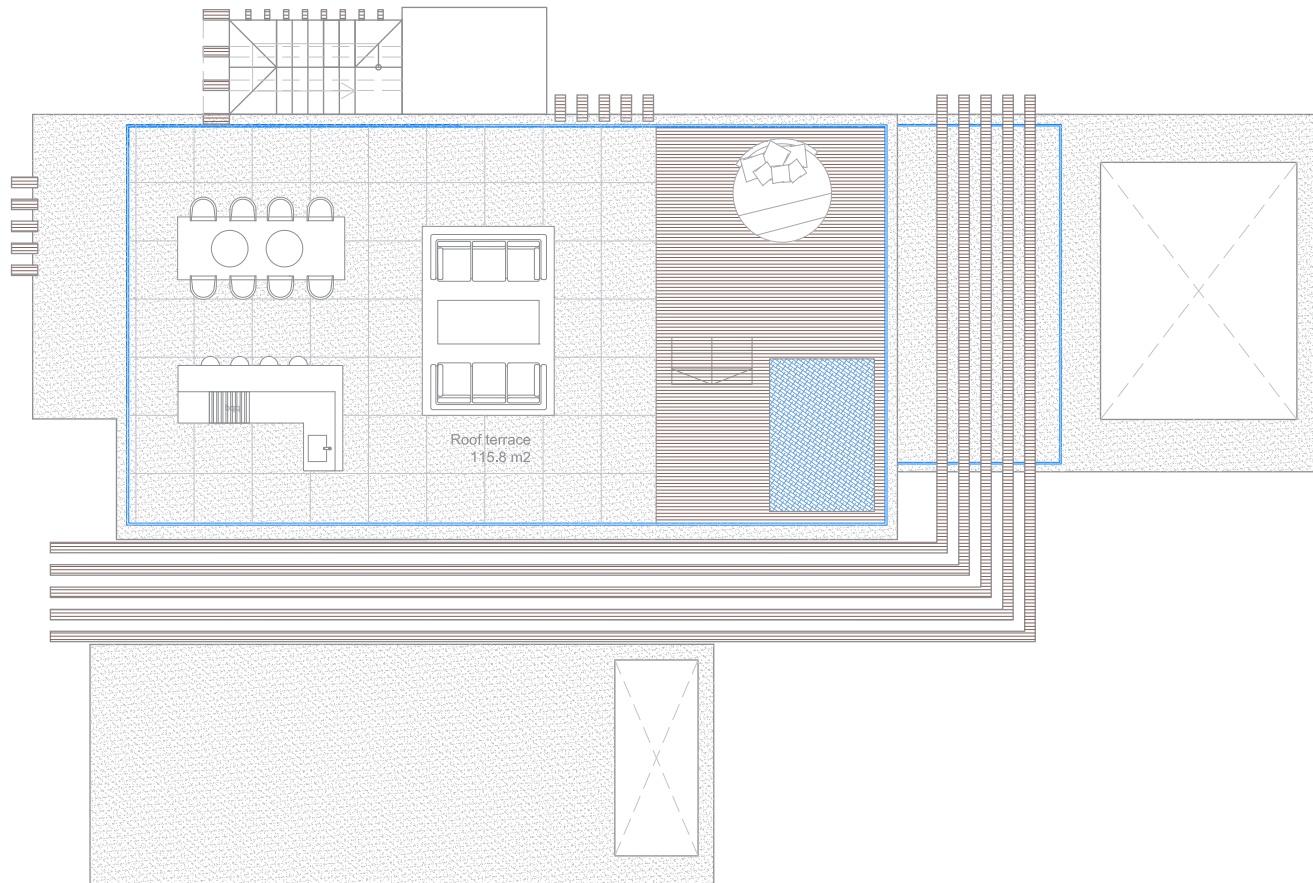
Extras

Glass balustrade.... 17.150€

Jacuzzi..... 18.500 €

Including: Wooden deck in two levels

BBQ with bar and sink..... 9.500 €



Uncovered Terraces: 115 m²

