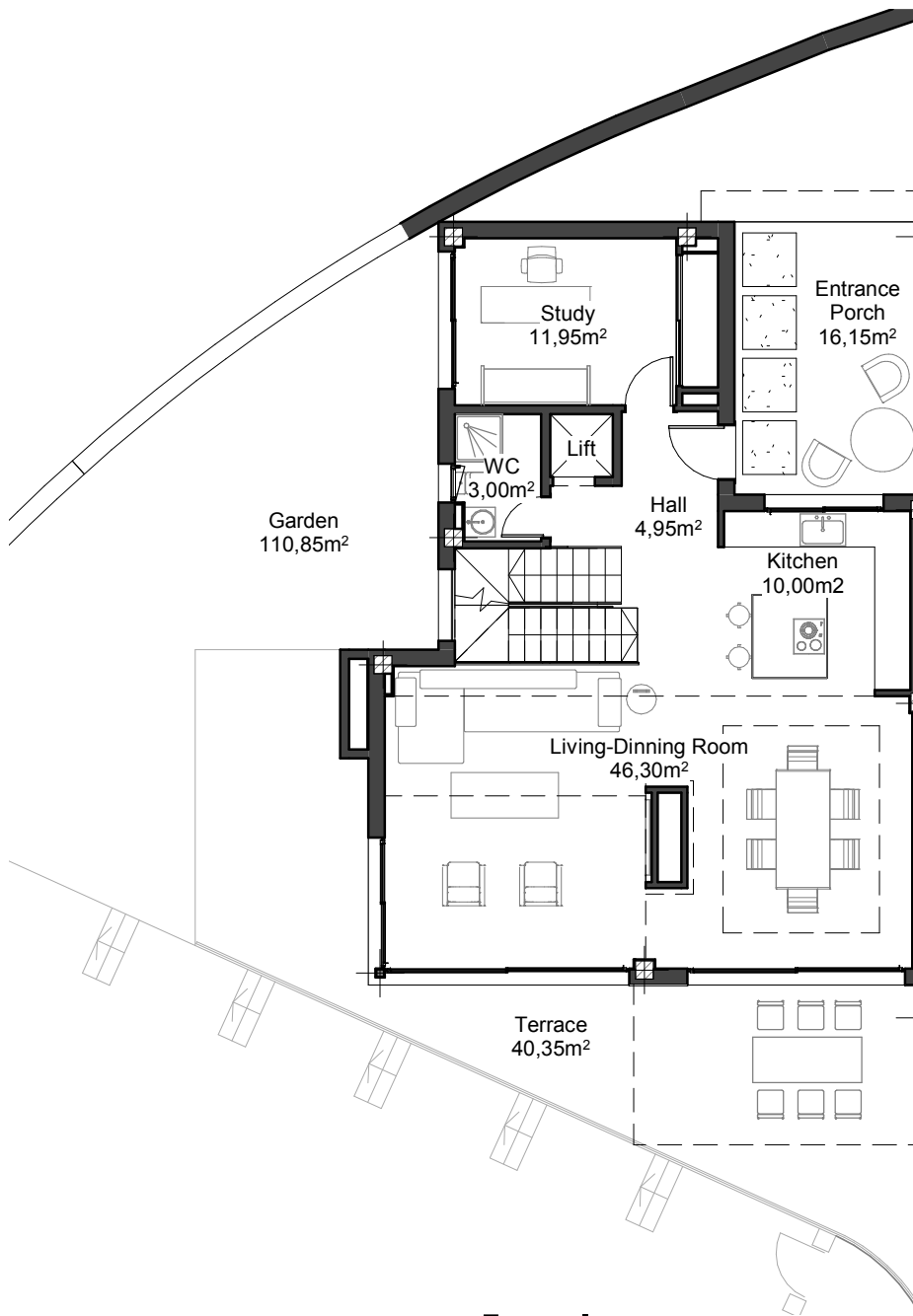


# Villa 01

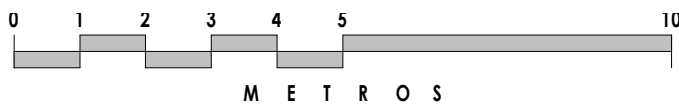
## Details

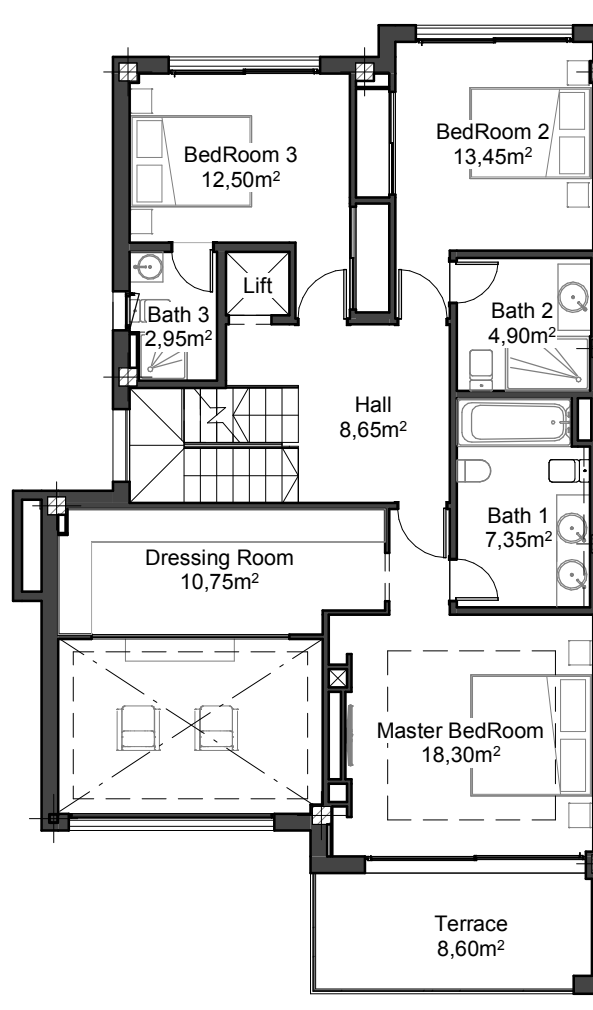
Beds	4
Baths	5

Size	Built	Terraces	Garden
Basement	64.28 m <sup>2</sup>	- m <sup>2</sup>	- m <sup>2</sup>
Ground Floor	95.66 m <sup>2</sup>	57.30 m <sup>2</sup>	115.80 m <sup>2</sup>
First Floor	115.16 m <sup>2</sup>	9.60 m <sup>2</sup>	- m <sup>2</sup>
Roof Solarium	11.45 m <sup>2</sup>	94.15 m <sup>2</sup>	- m <sup>2</sup>
<b>TOTAL</b>	<b>286.55 m<sup>2</sup></b>	<b>161.08 m<sup>2</sup></b>	<b>115.80 m<sup>2</sup></b>

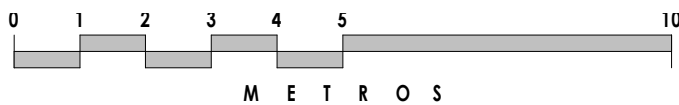


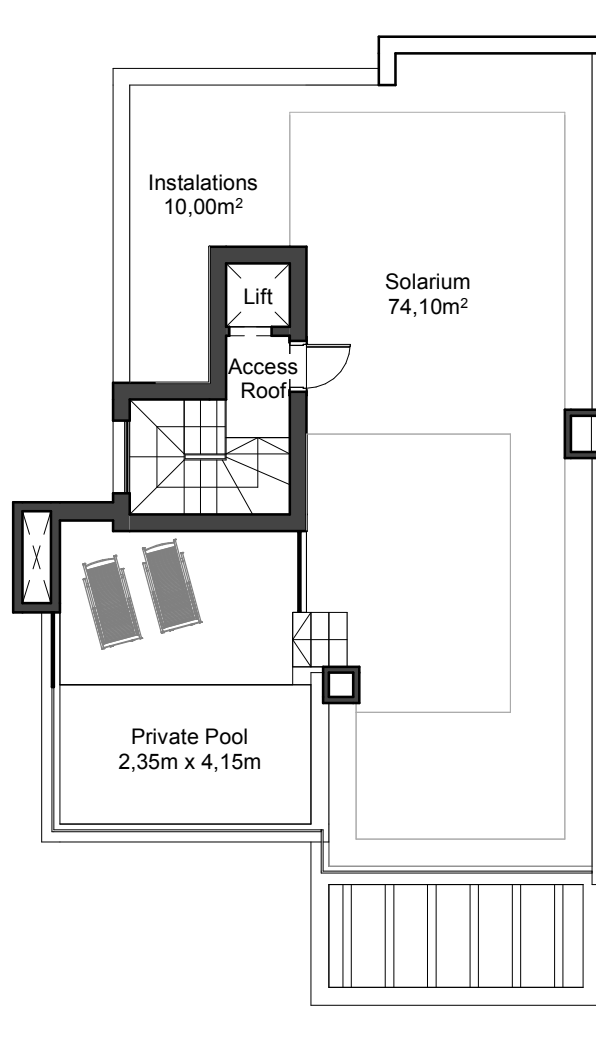
# Ground Floor



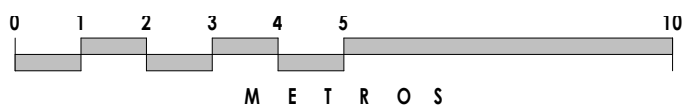


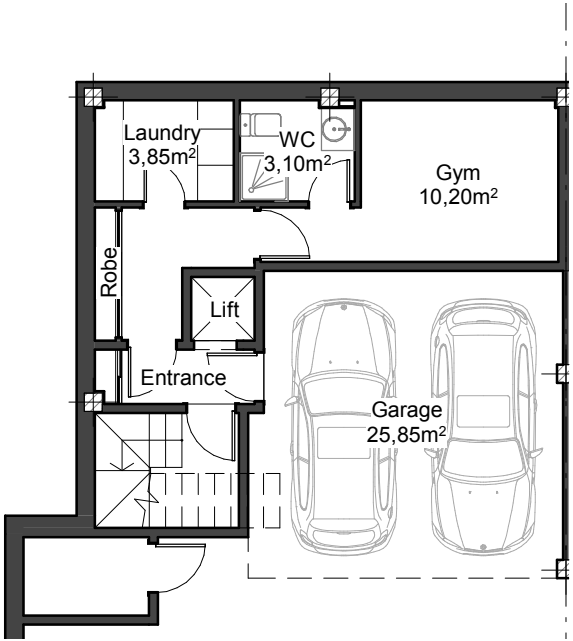
# First Floor





# Roof Solarium





# Basement Level

