



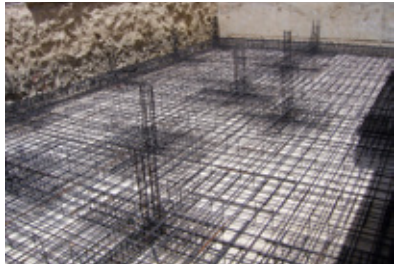
## INTRODUCTION

Our quote includes the cost of all the materials that are shown in the plans and are included in this presentation.

Our quotes allow the customer to choose from a wide range of materials from recommended suppliers. Depending on the value of chosen materials, price may vary.

These aspects are used developing market high-valued villas. The quality (higher or lower) is selected following the customer's requirements. Designing and furniture (except kitchen equipment and cupboards) are not included in price.

## FOUNDATION AND STRUCTURE



### FOUNDATION USING REINFORCED CONCRETE SLAB

SPECIAL FOUNDATIONS ARE NOT INCLUDED IN THE PRICE:

- PILE-DRIVING
- MICRO PILE DRIVING
- CORE WALLS
- CONCRETE FILLER
- SLOPE STABILIZATION



### WATERPROOFING OF BASEMENT WALLS

ASPHALT PRIMING  
ASPHALT LAYER  
DRAINING LAYER WITH GEOTEXTILE

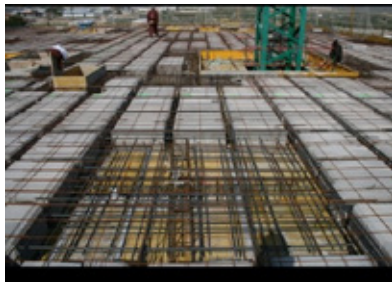


### DRAINAGE OF PERIMETER WALLS IN THE BASEMENT

DRAIN TUBE PERIMETRAL FOUNDATION  
DIAMETER IS 160MM

THE DRAIN TUBE COVER

DRAIN WATER EXPULSION BY PUMPING OR USING GRAVITY



### STRUCTURE

REINFORCED CONCRETE AND METAL PILLARS

RETICULAR REINFORCEMENTS AND REINFORCED SOLID CONCRETE

## ROOF AND FACADE ENCLOSURE



### TOP FLOOR COVERS

FORMATION OF SLOPES USING MORTAR.

WATERPROOFING USING BITUMINOUS ASPHALT.

THERMAL INSULATION ACCORDING TO ITS CALCULATION.

WEIGHT-BEARING PROTECTION MADE OF CRUSHED GREY GRAVEL



### FACADE (MINIMUM 80% OF FACADE SURFACE)

FILLED AND PLASTERED FACADE.  
PAINTING IN WHITE COLOR OF EXTERIOR WALLS, MINIMUM 80% OF SURFACE OF FACADE.



### FINISHED EXTERIOR PART OF THE FACADE (THE MAXIMUM SURFACE 20%)

FINISHED FAÇADE USING DISTINCT PAINTING  
THE MAXIMUM SURFACE IS 20% OF THE FACADE

THE SUPPLY OF END-CONSTRUCTION MATERIAL IS UP TO 50 € PVP PRICE/m<sup>2</sup>

EXAMPLES OF FINISHES INCLUDED:

- STONE COMBINED WITH MORTAR OR WITH BONE GASKET.
- PORCELAIN GRES APPLIANCE WITH MORTAR AND ANCHORED WITH STAPLES.
- PLASTERED FACADE.



### INTERIOR WALLS OF THE GARAGE

WALL CONSTRUCTION USING DISTINCT MATERIALS CONTRASTING IN COLOR.

THE SUPPLY OF END-CONSTRUCTION MATERIAL IS UP TO 30 € PVP PRICE/m<sup>2</sup>

EXAMPLES OF FINISHED PROJECTS:

- STONE COMBINED WITH MORTAR
- PORCELAIN GRES APPLIANCE WITH MORTAR.



### FACADE INSTALATION SYSTEM

BASE OF POLYURETHANE; THICKNESS 3-9 CM AND DENSITY 35KM/ m<sup>3</sup> (FINAL MEASUREMENTS AND DENSITY DEPENDS ON CALCULATION)

### INTERIOR FACADE WALL

SELF-SUPPORTING FAÇADE PARTITION WITH A 2 LAYERS OF GYPSUM AND 13MM LAMINATION AND TIGHTEN WITH A METAL STRUCTURE OF 46MM, THICKENED EVERY 60CM.

INSULATION USING MINERAL WOOL.

## INTERIOR EQUIPMENT AND FALSE CEILINGS

### INTERIOR EQUIPMENT

SELF-SUPPORTING PARTITION FROM 4 GYPSUM BOARDS WITH 13MM LAMINATION, SCREWED TOGETHER WITH 46MM METAL STRUCTURE AND THICKENED EVERY 46MM.

LAMINATED GYPSUM BOARDS ARE RESISTANT TO HUMIDITY.

INSULATION USING MINERAL WOOL.

### FALSE INTERIOR CEILING

FALSE CONTINUOUS SUSPENDED CEILING FROM 1 GYPSUM BOARD WITH 13MM LAMINATION, SCREWED WITH METAL STRUCTURE MADE UP OF ANCHORED RAILS.

THESE GYPSUM BOARDS ARE RESISTANT TO HUMIDNESS.

THE PART WALLS OF GROUND FLOOR AND FIRST FLOOR ECOUNTER WILL BE WITH PERIMETER CAVITIES.

THESE CAVITIES WILL SERVE AS A SPACE FOR A CURTAIN ROD TO PLACE.

### FALSE TERRACE CEILING

FALSE CEILING MADE UP OF 1 SPECIFIC CONCRETE LAYER USED SPECIALLY FOR FALSE EXTERIOR CEILINGS, IT CAN BE MADE OF AQUAPANEL SKYLITE OR OTHER PROPORTIONAL MATERIAL.



### WATERPROOFING OF BATHROOM AREAS (BASE AND WALLS)

WATERPROOFING WALLS IN THE SHOWER AREAS MADE UP OF POLYOLEFIN FLEXIBLE SHEET.

IN CASE OF SELECTING "INSITU" SHOWER TRAY, THIS SHEET ALSO SHOULD BE PLACED ON THE BASE.



### PAINT

PLASTIC PAINT (COLOR TO CHOOSE) IN THE INTERIOR SIDE OF THE HOUSE.

FOR FALSE EXTERIOR CEILING THE WATERPROOF WHITE PAINTING IS USED.

NOT INCLUDED:

WATER ENAMLE PAIN  
STUCCO PAINT.

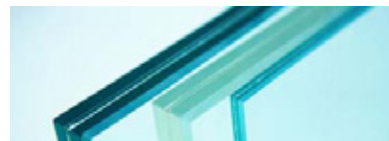
## WOODWORKS



### WOODWORKING OF ALUMINIUM FACADE • CORTIZO

**MATERIAL:** ALUMINIUM  
**TYPE:** HEAT CHANNEL BREAKAGE  
**BRAND:** CORTIZO

- FOLLOWING TYPES:
- SMALL SLIDING BALCONIES WITH 2 SLIDING TRACKS: COR 4500 RECESSED /NON-RECESSED IN THE FLOOR.
- BALCONIES WITH 2 BIG SLIDING TRACKS: SLIDE SYSTEM COR 4500 RECESSED/NON RECESSED IN THE FLOOR (TO 300kg/SHEET)
- SLIDING WINDOWS: COR4.200
- FIXED AND FOLDING WINDOWS: COR-60CE



### GLASSES OF WOODWORKS OF THE FACADE

- LAMINATED GLASS WITH AIR, MEASUREMENTS UP TO 2.50'2.60m
- DENSITY ACCORDING TO CALCULATION
- LOW-EMISSION GLASS



### FRONT DOOR. | 8.000€ PVP

INCLUDED:

- SIDE WINDOWS
- SUPERIOR ENCLOSURE 2 SIDES DEPENDING ON THE TYPE OF THE DOOR
- METALIC UPHOLSTERED PILARS (CHOOSING SIDE WINDOWS AND SUPERIOR ENCLOSURE)



### SIDE DOORS | 1.700€ PVP

UP TO 1 DOR FOR 1.700€ PVP/FIXED PRICES



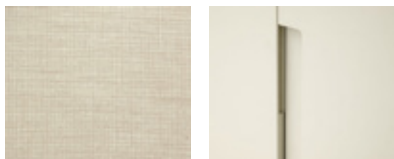
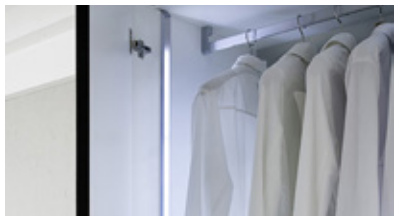
MAGNETIC LATCH



CONCEALED HINGES

### INTERIOR DOORS | 1.000€ • 1.300€ PVP/ UD.

- FOLDING DOOR: UP TO 1.000€ PVP U/P
- SLIDING DOOR: UP TO 1.300€ PVP U/P



## WARDROBES| 3.000€ PVP/ ROOM

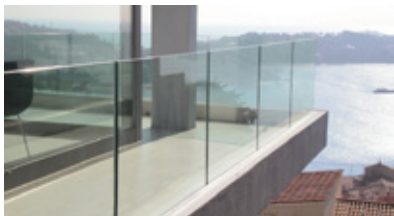
NOT INCLUDED:  
BASEMENT WARDROBES



## PUERTAS INTERIORES A CUARTOS TÉCNICOS

PUERTAS DE CHAPA METÁLICA.

ACABADO EN PINTURA EPOXI COLOR BLANCO. ALTURA DE HOJA 2.03m



## HANDRAILS| 250€ PVP/ml

### STAIRS HANDRAILS

TEMPLATE GLASS 6+6 mm WITH INOX BOLTS.WITH INCLINATIONS ON ONE OF THE SIDES.

### INTERIOE RAILS IN TERRACE ON THE FIRST FLOOR AND IN THE COURTYARD ON THE GROUND FLOOR.

INTERIOE RAILS IN TERRACE ON THE FIRST FLOOR AND IN THE COURTYARD ON THE GROUND FLOOR.

IN CASE OF CHANGE:

- UP TO 250€ PVP/ml INSTALLED IN STRAIGHT SECTIONS
- UP TO 350€ PVP/ml INSTALLED IN INCLINED STRETCHES.

NOT INCLUDED:  
OUTDOOR RAILING ON THE GROUND FLOOR.



## INTERIOR STAIRCASE

STRINGBOARD IN THE CONCRETE WITH THE SHAPE OF "ZIG ZAG".

STAIRS TREADS MADE OF MARBLE-CERMIC- WOOD CONSIDERING THE TYPE OF FLOORING.

STAIRCASE RAILINGS MADE UP OF TEMPLATE GLASS 6+6mm WITH INOX BOLTS IN INCLINED SECTIONS.

GLASS HANDRAIL 8+8 IN ANCHORED PROFILE THAT MOVES SIDWAYS, ON STRAIGHT SECTIONS



## GARAGE GATES| 1.800€ PVP

GARAGE GATES, WITH MOTORIZATION, UP TO 1.800€ PVP.

MAXIMUM WIDTH 4m, SELECTIVE SYSTEM

## FLOORING AND TILINGS



## INTERIOR FLOORING| 50€ PVP/m<sup>2</sup>

INCLUDED:

- FLOOR TILES
- SKIRTING BOARD
- POLISHING TREATMENT

NOT INCLUDED:

- FLOOR TILE OVER 90CM
- FLOOR TILE LESS THAN 30cms.



## FLOOR OF THE TERRACES.50€ PVP/m<sup>2</sup>

FLOOR OF THE TERRACES WITH TILE INSTALATIONS UP TO 50€PVP FEE/m<sup>2</sup>

IIINCLUDED:

- FLOOR TILE
- SKIRTING BOARD
- POLISHING TREATMENT.

NOT INCLUDED:

- FLOOR TILE OVER 90cms.
- FLOOR TILES LESS THAN 30cms.



## STEPS OF THE STAIRS| 50€ PVP/ml

STEPS FOR ANGLED STAIRS



## COPING

COPING IN GENERAL ROOFING WITH WATERPROOFING PLASTER AND PAINTED.

COPING IN PARAPET WITH GLASS HANDRAIL, WITH WATERPROOFING PLASTER AND WHITE LIMESTONE WITH DRIPCAP.

WINDOWS WITH WATERPROOFING RAIN GUTTER INSTALATION AND WHITE LIMESTONE WITH DRIP CAP.



## TILINGS| 40-80€ PVP/ m<sup>2</sup>

BATHROOM TILING WITH FLOOR TILE UP TO:

- 40€ PVP PRICE/m<sup>2</sup> FULLY TILED BATHROOM WALLS. TILING WHOLE BATHROOM.
- 80€ PVP PRICE/m<sup>2</sup> HALF TILED BATHROOM WALS (JUST A SHOWER ZONE)

NOT INCLUDED:

- PORCELAIN TILES OF LOW TCHIKNESS
- TILES OF GLASS
- TILES OVER 90cms.
- TILES LESS THAN 30cms.



### FLOORING OF VEHICLE ACCESS AREAS. 20€ PVP/m<sup>2</sup>

FLOORING OF THE ENTRANCE TO THE GARAGE USING TILING UP TO 20€ PVP PRICE/m<sup>2</sup>

NOT INCLUDED:

- PORTUGUESE STONE OR SIMILAR



### GARAGE AND SERVICE AREAS' FLOORING . 20€ PVP/ m<sup>2</sup>

GARAGE AND SERVICE AREAS FLOORING USING TILES UP 20€/PVP PRICE/m<sup>2</sup>

INCLUDED:

- TILES
- SKIRTING BOARD
- POLISHING TREATMENT.

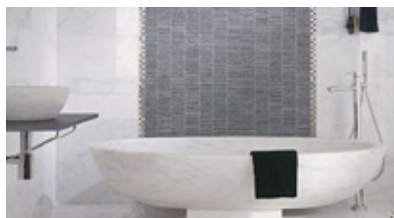
NOT INCLUDED:

- FLOOR TILES OVER 60cms.
- FLOOR TILES LESS THAN 30cms.

ALSO INCLUDED:

- WATER-BASED PAINT EPOXI ON A CONCRETE DECK.

## SANITARY WARE AND TAPS



### NUMBER OF BATHROOMS AND TOILETS

NUMBER OF BATHROOMS AND TOILETS:

#### A BASEMENT FLOOR

- 1 BATHROOM

#### GROUND FLOOR

- 1 TOILET
- 1 BATHROOM PER BEDROOM

#### FIRST FLOOR

- 1 BATHROOM PER BEDROOM



### TOILETS ON THE GROUND FLOOR AND FIRST FLOOR | 600€ PVP/UD

INCLUDED:

- BASIN, WATER TANK, SEAT AND COVER.
- ELEVATED FIXING TO WALL (IN ELEVATED MODELS)
- PUSH PLATES.



### THE COMPOSITION OF A SINK | 600€ PVP/ TAP

INCLUDED:

- BATHROOM FITTINGS
- SINK
- WORKTOP
- SIPHON
- WASTE PIPE



### COMPOSITION OF A SHOWER | 2.500€ PVP/BATHROOM IN THE GROUND FLOOR AND FIRST FLOOR.

INCLUDED:

- CONTROLLERS
- SHOWER HEAD (WALL MOUNT OR RAINSHOWER)
- DIGITAL SHOWER.
- SHOWER TRAY
- SHOWER ENCLOSURE



### COMPOSITION OF A SHOWER IN THE BASEMENT FLOOR| 1.500€ PVP/BATH

INCLUDED:

- CONTROLLERS
- SHOWER HEAD (WALL MOUNT OR RAINSHOWER).
- SHOWER TRAY
- SHOWER ENCLOSURE



### COMPOSITION OF A BATH IN THE MAIN BEDROOM|2.500€ PVP

INCLUDED:

- BATH
- BATHROOM FITTINGS



### COMPOSITION OF A BATH IN THE SECONDARY BEDROOM| 1.500€ PVP/ BATH

INCLUDED:

- BATH
- BATHROOM FITTINGS

## EQUIPMENT



### KITCHEN+SINK| 35.000€ PVP

KITCHEN+ FULLY EQUIPED LAUNDRY AREA UP TO 35.000€ PVP TARIFA INSTALADA.

INCLUDED:

- KITCHEN AND SINK FURNITURE
- HOUSEHOLD APPLIANCES
- KITCHEN FITTINGS
- EXTRACTOR HOODS
- COUNTERTOPS

AVAILABLE IN ADHERED ESTABLISHMENTS



### JACUZZI | 3.500€ PVP



### FIREPLACE| 3.500€ PVP

1 FIREPLACE UP TO 3.500€ PVP PRICE (CHIMNEY TYOE TUNEL, FIREWOOD IN SIZE OF 1,20m)

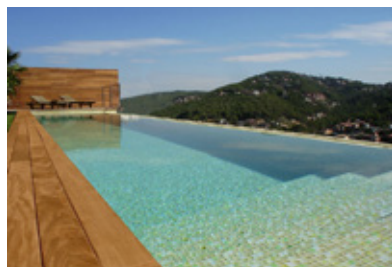
INCLUDED:

- FIREPLACEALS

NO INCLUDED:

- INSTALATION
- COATING OF GYPSUM BOARDS

## SWIMMING POOL AND TANKS



### SWIMMING POOL TYPE INFINITY UP TO 60m<sup>2</sup>

INCLUDED:

- THE COMPLETE HYDRAULIC SYSTEM



### COATING 30€PVP/m<sup>2</sup>

COATING OF THE POOL TANK AND EXTERIOR BOARDS BY GLASS MOSAIC UP TO 30€ PVP PRICE/m<sup>2</sup>



### SWIMMING POOL LIGHTING

SWIMMING POOL LIGHTING WITH LED SPOTLIGHTS

ELECTRICAL IGNITION BOARD WITH TIME CONTROLLER IN TECHNICAL ROOM POND UP TO 10m<sup>2</sup>



### CONTROLLER EQUIPMENT - CHLORINE AND PH DISPENSER

INSTALATION OF EQUIPMENT - CHLORINE AND PH DISPENSER (SALT WATER CHLORINATION IS NOT INCLUDED)



### POND UP TO 10m<sup>2</sup>

NUMBER OF PONDS: 1

MAXIMUM SURFACE OF THE POND: 10m<sup>2</sup>

INCLUDING FOLLOWING INSTALATIONS:

- WATERFALL WITH MEASURE FROM 60 CM WIDE.
- WATER RECIRCULATION SYSTE

## AIR - CONDITIONING



### RADIANT FLOOR

RADIANT FLOOR THROUGHOUT THE VILLA ON THE GROUND FLOOR, IN THE BASEMENT AND LAUNDRIES.



FAN COIL (PER FLOOR)



GRILLE

### REFRIGERATION

GROUND FLOOR AND FIRST FLOOR REFRIGERATION BY COOLING CONVECTORS INSTALLED IN FALSE CEILING.  
1 CONVECTOR PER FLOOR 1 FANCOIL

CIRCULATION THROUGH GRILLE.



A/A CONTROLLER (1 per floor)

### CLIMATE CONTROL

AIR ZONING IN ROOMS AND AIR-CONDITIONED BATHROOMS.



SOLAR PANELS

### PRODUCCIÓN DE AGUA CALIENTE SANITARIA

PRODUCTION OF HOT SANITARY WATER USING SOLAR COLECTORS WITH ELECTRICAL RESISTANCE.



### RADIANT FLOOR AND REFRIGERATION

PRODUCTION OF RADIANT FLOOR AND REFRIGERATION USING HEAT-PUMP EQUIPMENT



## ELECTRIC INST.



LUTRON KEYPADS

### LIGHTING CONTROL

#### LUTRON HOMEWORKS QS SYSTEM

#### LIGHTING CONTROL IN THE 2 MAIN ZONES OF THE VILLA

##### MAIN HALL

- 4 LIGHTING CIRCUITS.
- 1 KEYPADS FOR LIGHTING ZONES

##### MAIN BEDROOM

- 4 LIGHTING CIRCUITS.
- 2 KEYPADS FOR LIGHTING ZONES



### SOUND

PRE-FITTING OF SOUND SYSTEM IN THE GROUND FLOOR AND FIRST FLOOR BEDROOMS, HALL AND EXTERIOR TERRACES.



BANG & OLUFSEN



### ELECTRICITY

ELECTRICITY INSTALLATION FOLLOWING REGULATIONS (LOW VOLTAGE REGULATIONS). ON ALL FLOORS ELECTRICAL DEVICES NIESSEN ZENIT WHITE



### TELECOMUNICATION DEVICES

INSTALLATION OF TELECOMUNICATION DEVICES CONSIDERING REGULATIONS (ITC) ON ALL FLOORS. VIDEOINTERCOM INSTALLATION ON THE GROUND FLOOR.



## INSTALATION OF HYDRAULIC AND AIR RENOVATION SYSTEMS



SEWAGE PUMP

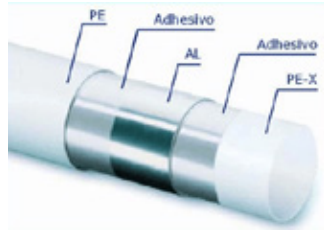
### EVACUATION OF FAECAL WATER

RESIDUAL WATER ELEVATION USING 2 WATER PUMPS WITH LEVEL SENSORS (JUST IN CASE IF EVACUATION USING GRAVITY IS NOT POSSIBLE)



### SANITATION PIPES

WITH SOUNDPROOF PIPING



### WATER SUPPLY SYSTEMS

MULTILAYERED PIPING NEEDED FOR SUPPLY OF HOT, COLD WATER AND IT'S CIRCULATION.



### SYSTEM OF HOT WATER RECIRCULATION

SYSTEM OF HOT WATER RECIRCULATION (RETURN CIRCUIT) FOR FAST HOT WATER SUPPLY.



### AIR CIRCULATION SYSTEM

CONTROLLED MECHANICAL VENTILATION IN BATHROOMS AND KITCHEN.  
MECHANICAL EXTRACTION IN THE GARAGE.



### PUMPING DRINKING WATER

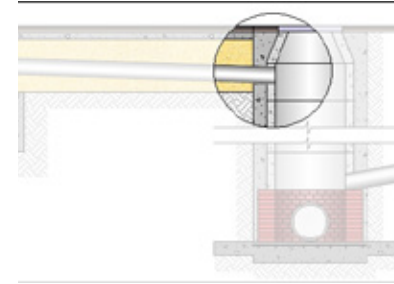
DRINKING WATER LIFTING AND IMPULSION USING PRESSURE VESSEL.



### DECALCIFICATION

WATER DECALCIFICATION

## SUPPLY CHANNELS INSTALATION



### SUPPLY CONNECTION INSTALATION

INCLUDING THE FACILITIES THAT STARTS FROM THE BORDER WALL OF THE PLOT AND LASTS TO THE HOUSING, FOR THE FOLLOWING SERVICES:

- DRINKING WATER
- SANITATION
- GAS
- ELECTRICITY
- TELECOMMUNICATIONS

THE PROVISION OF SUCH SERVICES FROM THE WALL OF THE PLOT TO THE MUNICIPAL SUPPLY NETWORKS OR THE SUPPLYING COMPANIES IS NOT INCLUDED.



## EXTERIOR ENCLOSURES



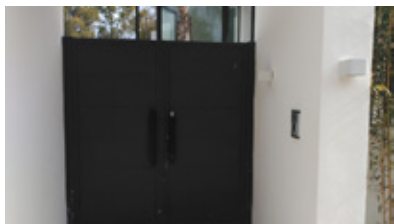
### HIGHWAY ENCLOSURE | 125€ PVP/m<sup>2</sup>

ENFORCED AND IN WHITE COLOR HIGHWAY ENCLOSURE WITH SEE-THROUGH FENCING, UP TO 125€PVP FIXED PRICE/m<sup>2</sup>.



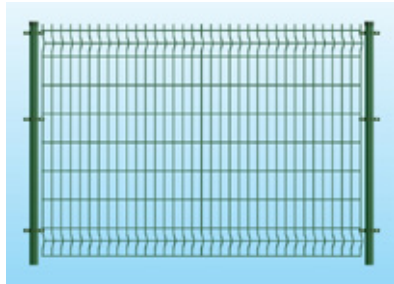
### VEHICLE GATE. | 1.800€ PVP

1 VEHICLE GATE IN THE ENCLOSURE OF THE PLOT, WITH MOTORIZATION UP TO 1.800€PVP..



### WICKED DOOR | 1.800€ PVP

1 WICKED DOOR IN THE ENCLOSURE OF THE PLOT UP TO 1.800€ PVP.



### MEDIUM ENCLOSURE. 30€ PVP/m<sup>2</sup>

MEDIUM ENCLOSURE USING SEE-THROUGH FENCING UP TO 30€ PVP PRICE/m<sup>2</sup>.

## GARDENING AND EXTERIOR ZONE



### PLANTING. 10.000€ PVP

PLANTING OF TREES, BUSHES AND LAWN UP TO 10.000€ PVP.



### WATERING AND FERTILIZATION. 3.000€ PVP

INSTALATION OF WATERING AND FERTILIZATION SYSTEMS UP TO 3.000€ PVP..



### GARDEN LIGHTING. 2.000€ PVP

GARDEN LIGHTING UP TO 2.000€ PVP.