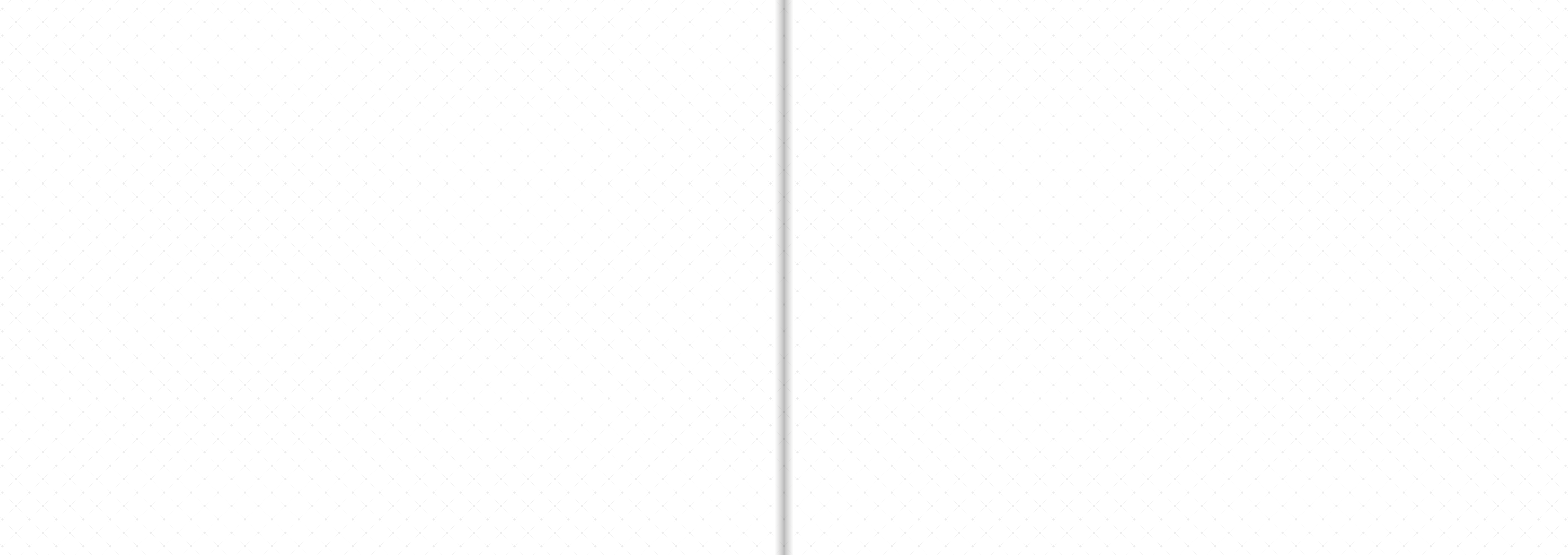


F L A
M I N
G O S





F L A
M I N
G O S



“

Nature isn't just beautiful.
Even in small doses, it changes the way we *feel*.

”

An aerial photograph of a mountain range with a central valley. The terrain is rugged and covered in dense vegetation. The lighting creates strong shadows, highlighting the topography. The text 'S O F T' is overlaid on the left side of the image.

S

O

F

T

An aerial photograph of a mountain range with a central valley. The terrain is rugged and covered in dense vegetation. The lighting creates strong shadows, highlighting the topography. The text 'S O F T' is overlaid on the left side of the image. The text 'T O U C H' is overlaid on the right side of the image.

T

O

U

C

H

B R A V E

H E A R T

F L E X I B L E

M I N D



C R E
A T I
V E S



STUDY OF ARCHITECTURE AND URBANISM "MANUEL BURGOS"



MY ARCHITECTURE IS THE SEARCH OF SIMPLICITY, FUNCTIONALITY, SPACIAL WEALTH, NATURAL LIGHT AND HARMONY WITH NATURE

Architect from Seville with over 40 years of career, creates the team Manuel Burgos Architects composed by professionals with more than 30 years of experience in the "Costa del Sol" and Seville, as well as in other cities around the globe. His personal architecture style is based on the Andalusian and Mediterranean traditions.

His work is supported by more than 15.000 houses, performing in numerous projects of luxury villas, residential complexes, hotels, Mediterranean compounds, etc.

With mediterranean roots, his style incorporates the latest trends to enhance light and space as the main characters of his design.

In the last period, the work of this architect has focused on working his projects from a much closer point of view, thinking about the skin and the tangible aspects of his designs. Working the ideas artisanally, taking the details to its maximum exponent and with the use of noble materials that enhances the quality and warmth of his houses.



One of the constants in his designs is the creation of harmonious spaces that welcomes the visitor to live in and be part of it.

His experience leads him to synthesize architecture, creating those attractive and luminous environments that make us enjoy every day.

T H E
F A C T



D E S I G N S F R O M A M U C H C L O S E R P O I N T O F V I E W

NEW MATERIALS AND FINISHES

The project incorporates the latest technological innovations with new materials and finishes without forgetting the principles of his traditional background.

Located in the prestigious Urbanization of Los Flamingos, first line with the golf course, next to the Villapadierna Hotel. Enjoy the proximity to the city of Marbella and the calm of a secure urbanization with private access.

A high standing villa that emphasizes the illumination of the "Costa del Sol" and enhances the beauty of the surroundings. Using the natural materials of the area transmitting warmth and simplicity in its design. Conceived to meet all the needs of its user with a flexible high quality design.

This villa combines the simplicity of the design with the latest technological advances, achieving a unique result of habitability, style and comfort.







Main Entrance View















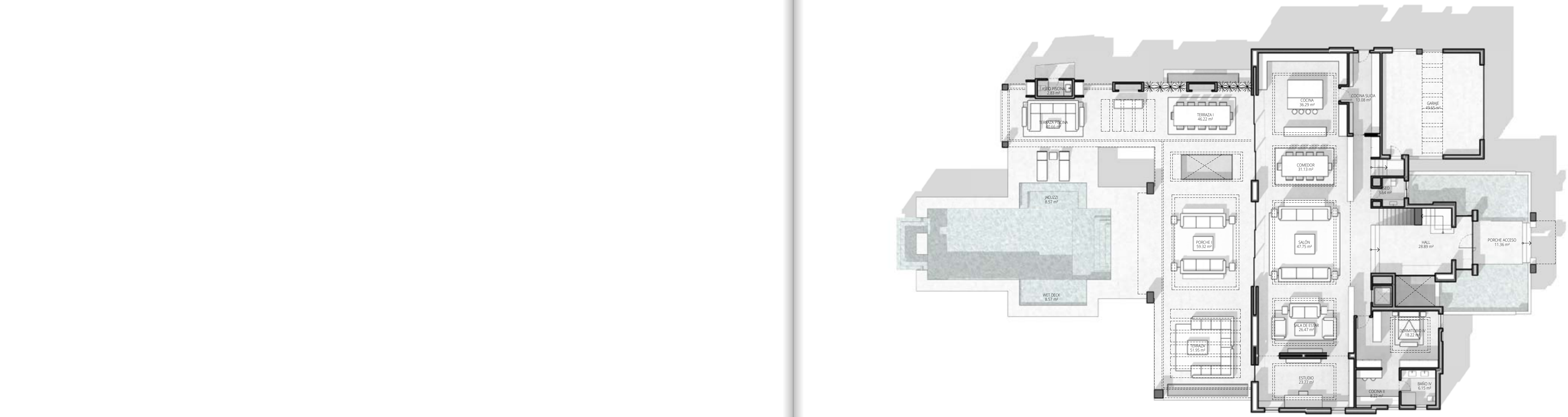


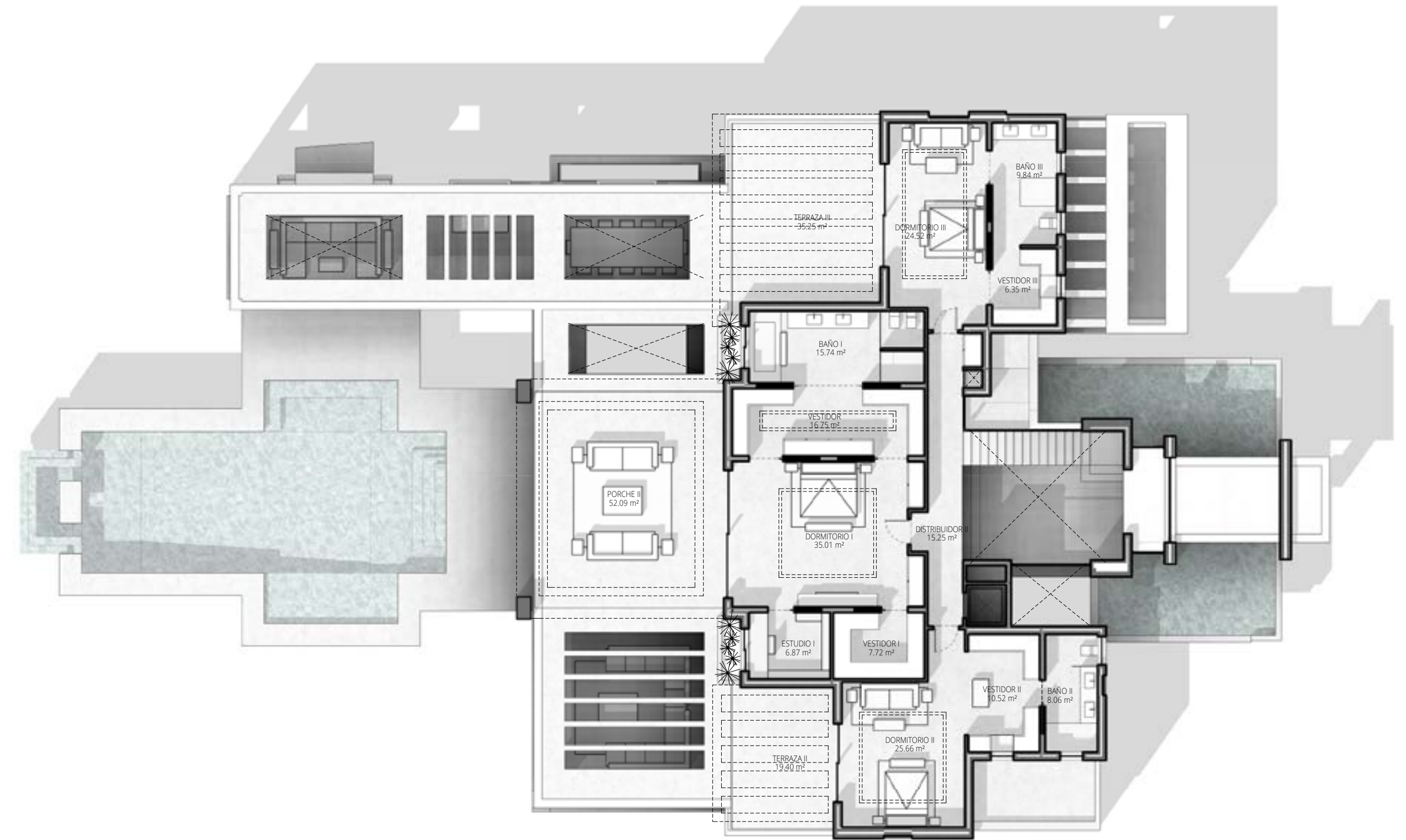
T H E
P L A
N S

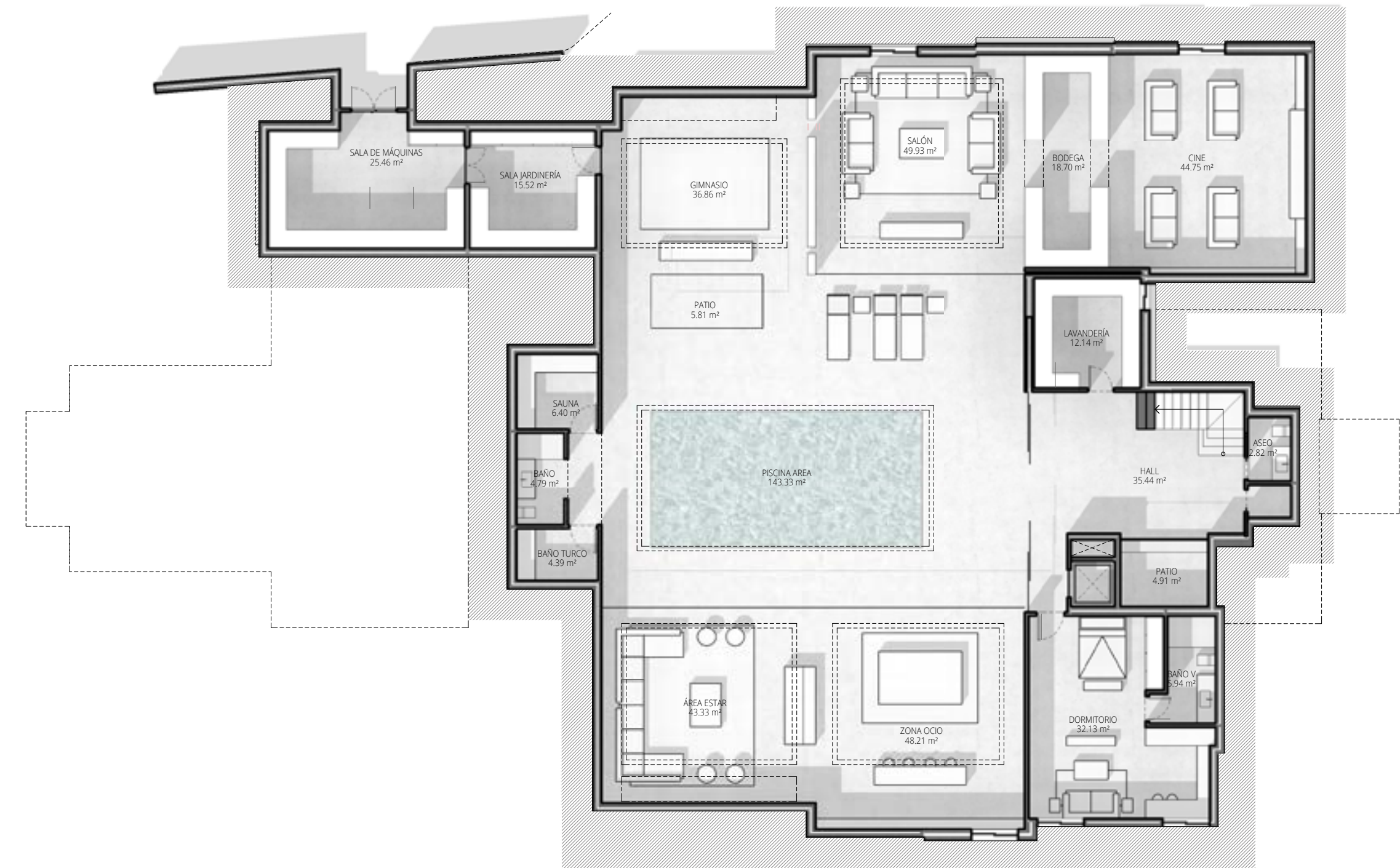


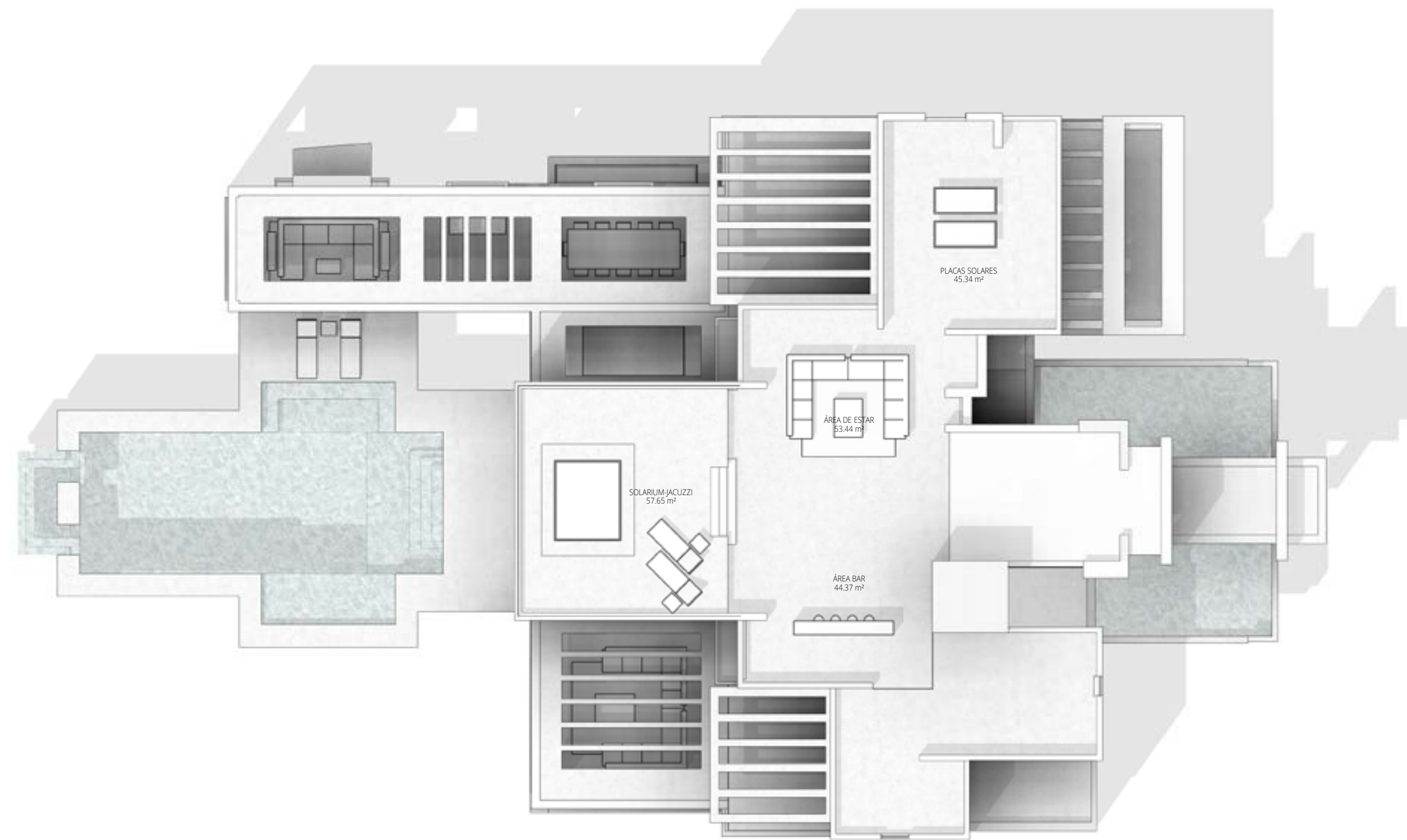
H A R M O N I O U S S P A C E S T H A T W E L C O M E S T H E V I S I T O R T O L I V E











Areas Summary

	GROUND F.	FIRST F.	TOTAL
CLOSE AREA	367 m²	219 m²	586 m²
PORCH	201 m²	107 m²	308 m²
TERRACES	-	-	-
BASEMENT	-	-	606 m²
ROOF FLOR	-	-	316 m²

TOTAL BUILT AREA **1192 m²** + **+ 312 m²** = **1504 m²**
(Total close area) (50% PORCH + 50% TERRACES)



PLOT
2400 m²



BEDROOMS
5



BATHROOMS
8



BUILT AREA
1504 m²



PORCH
308 m²

E N V
I R O
M E N T



T E C H N O L O G I C A L I N N O V A T I O N S W I T H N E W M A T E R I A L S

DESCRIPTIVE MEMORY

STRUCTURE

- Foundations with concrete foot-ing.
- Impermealizes concrete walls with perimeter drain.

ROOFTOP

- Walking/transitable rooftop, accesible from elevator.
- Jacuzzi preinstalation with draining and plumbing.
- First quality flooring finishises, similar to the terraces.

FAÇADES

- Building envelop consist of exterior rendering of cement mortar and acrylic paint finishing with some areas of decorative stone.
- Cavity walls with ceramic brickwork for the main structure.
- Polyurethane insulation.
- Ceramic brickwork for the inte-rior layer.
- Gypsum plastered in the interior.

INTERIOR WALLS

- Brickwall with gypsum plaster in both sides.
- Finished with marble tiles in the bathrooms.

FLOORINGS

- First quality marble tiling “crema real bianco” 80x80 cm.
- Exterior house, anti-slip domus finishing “crema real bianco” 80x80 cm.
- Bedrooms flooring with oak wood.
- Skirting of marble “crema real bianco”, 12cm height around the interior of the house.
- Basement finished with “terrazzo” tiles.
- Machine room, gres.
- Marble counter for basins in bathrooms

CEILINGS

- Suspended ceiling with plaster board with acrylic paint finish.
- Access panel to ceilings for ac machines.
- Adaptation for curtains and recess lights in false ceiling.

WALL TILING

- White tiled wall in laundry and machinery room 20x20cm.
- Finished with marble, crema real bianco, entire pieces floor to ceiling cut to the size.
- Shower walls finished with marble “sierra elvira” light grey lineal finishing, entire pieces bottom to top.
- Shower tray floating “sierra elvira” marble, light grey 3 cms.

STAIRS

- Interior stair with “crema real bianco” marble.

WOOD CARPINTERY

- Entry door, pivoting pine wood door, 1,50x3,05 m (stainless steel handle).
- Connecting doors lacquered with lineal decoration 50 mm thickness with chromed handle matt and hidden hinge.
- Sliding door lacquered with lineal decoration 50 mm thickness with chromed handle matt.
- Closet with swinging doors, same as interior carpentry with shelves, drawers and rack to hang.
- Bathrooms with furniture under the basin with drawers lacquered finishing, colour to be chosen.

METAL CARPENTRY

- Aluminium windows, model technal or similar colour ral 7030 grey stone.
- Glass (6+10+8) mm.
- Metallic door for machinery room.

METAL WORK

- Interior railing with security glass.
- Exterior railing with security glass.
- Garage door, automatic door lac-quered in aluminum.

INSTALATIONS

- Electrical switches in wall with electrical mechanisms, model niessen sky.
- Suspended sanitararies, model villeroy boch mod. subway 2.0.

- Taps model axor bouroullec hansgrohe.
- Impermeabiliced shower units.
- Glass shower screen.
- Air conditioner with heat pump and under floor heating.
- Electronic video intercom model fermax.
- Plumbing: installation by cooper pipes, with collectors and key of general cut in each of the rooms and each unit.
- Domestic hot water through heat pump telephone, tv and telecommunications system, in all the rooms, except bathrooms and terraces.
- 2000L Water tank emergency reserve.
- Water pump for high pressure.
- Solar panels in roof top for heating efficiency system.

SPECIAL INSTALATIONS

- Water softener.
- Central vacuum cleaner.
- Lift for 6 people.

URBANIZATION

- Irrigation and lighting installation in garden.
- Car access with paving stone floor 10x10 portuguese cut.
- Pedestrian and vehicle street door metal structure covered with wood.
- Fabulous swimming pool 9x9m with jacuzzi. tiling 2,5x2,5 cm.
- Perimetral plot fence.

FINISHES

FLOOR FINISH
MARBLE - CREMA REAL BIANCO

**POLISHED
AREA**

HALL DE ENTRADA
LIVING ROOM
KITCHEN
BATHROOM MASTER SUITE
BATHROOM JUNIOR SUITE

**SLIP RESISTANT
AREA**

TERRACES
PORCH
BASEMENT

SIZE

80x80cm

THICKNESS

2cm

FLOOR FINISH
GRES

**CERAMIC, SLIP RESIST
AREA**

MACHINERY
ROOM

SIZE

30x30cm

THICKNESS

2cm

FLOOR FINISH
MARBLE - MARRON EMPERADOR

**ESCARFILADO
SIZE**

30x10cm

THICKNESS

2cm

FLOOR FINISH
OAK WOOD

**ABRASION RESIST
AREA**

MASTER SUITE
JUNIOR SUITE

**DAMP AND ABRASION RESIST
AREA**

SAUNA
SPA
BATHROOM SAUNA

SIZE

120x120cm

THICKNESS

1.5cm

FINISHES

Main kitchen



Working/ Hidden kitchen



Central vacuum system



Smart House. Domotics



FINISHES

Aluminium carpentry
Fix window

Soleal, Technal

COLOR RAL 7030 GREY STONE - GLASS 6+6-8



Aluminium carpentry
Sliding window

Soleal, Technal

COLOR RAL 7030 GREY STONE - GLASS 6+6-8



Aluminium carpentry
Main Entrance Door

Puerta pivotante de madera

1,50X3,05m, MANIJA DE ACERO INOXIDABLE



Wood carpentry
Interior doors

PUERTA ABATIBLE DE MADERA, CON
DECORACION LINEAL 50mm

HOJA ABATIBLE MAS FIJO SUPERIOR DE TABLERO DE DM DE 50mm LACADO. TAPAJUNTAS DE DM DE 10x100mm A DEFINIR Y JUNTA DE GOMA, SISTEMA DE ABISAGRADO OCULTO DE ACERO INOX MATE.



FINISHES

Wood carpentry, Wardroves
White lacquered glass door

Tablero de DM de 10 mm lacado en blanco en cara exterior y de 2mm en la cara interior y relleno interior de fibratex nido de abejas, Tapajuntas de DM de 10 x 100 mm lacado en color blanco

Lift



Sanitary Ware
Basin Mixer

HANSGROHE, AXOR CITTERIO E



Sanitary Ware
Basin Mixer

ROCA PRINCESS



Sanitary Ware
Basin Mixer

HANSGROHE, AXOR PURAVIDA, EMBEDDED



Sanitary Ware
Basin Mixer

ROCA PRINCESS



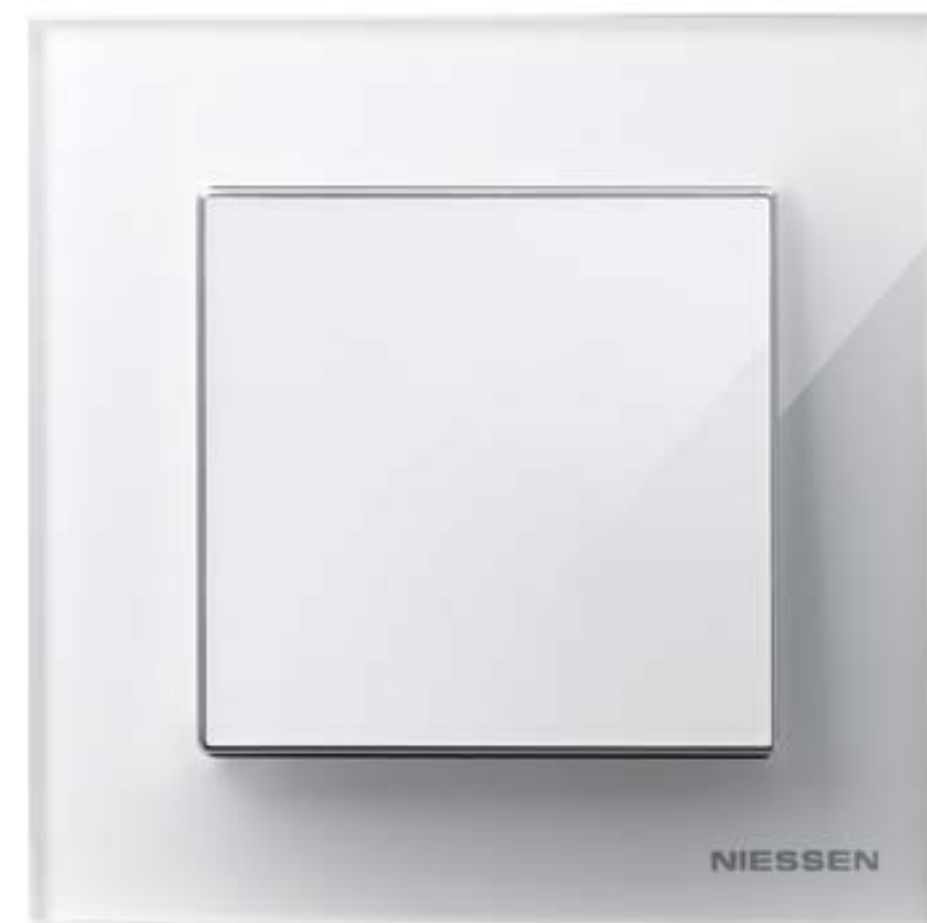
Sanitary Ware
Shower tray

CONTINUOUS SHOWER TRAY WITH GROUND FINISH

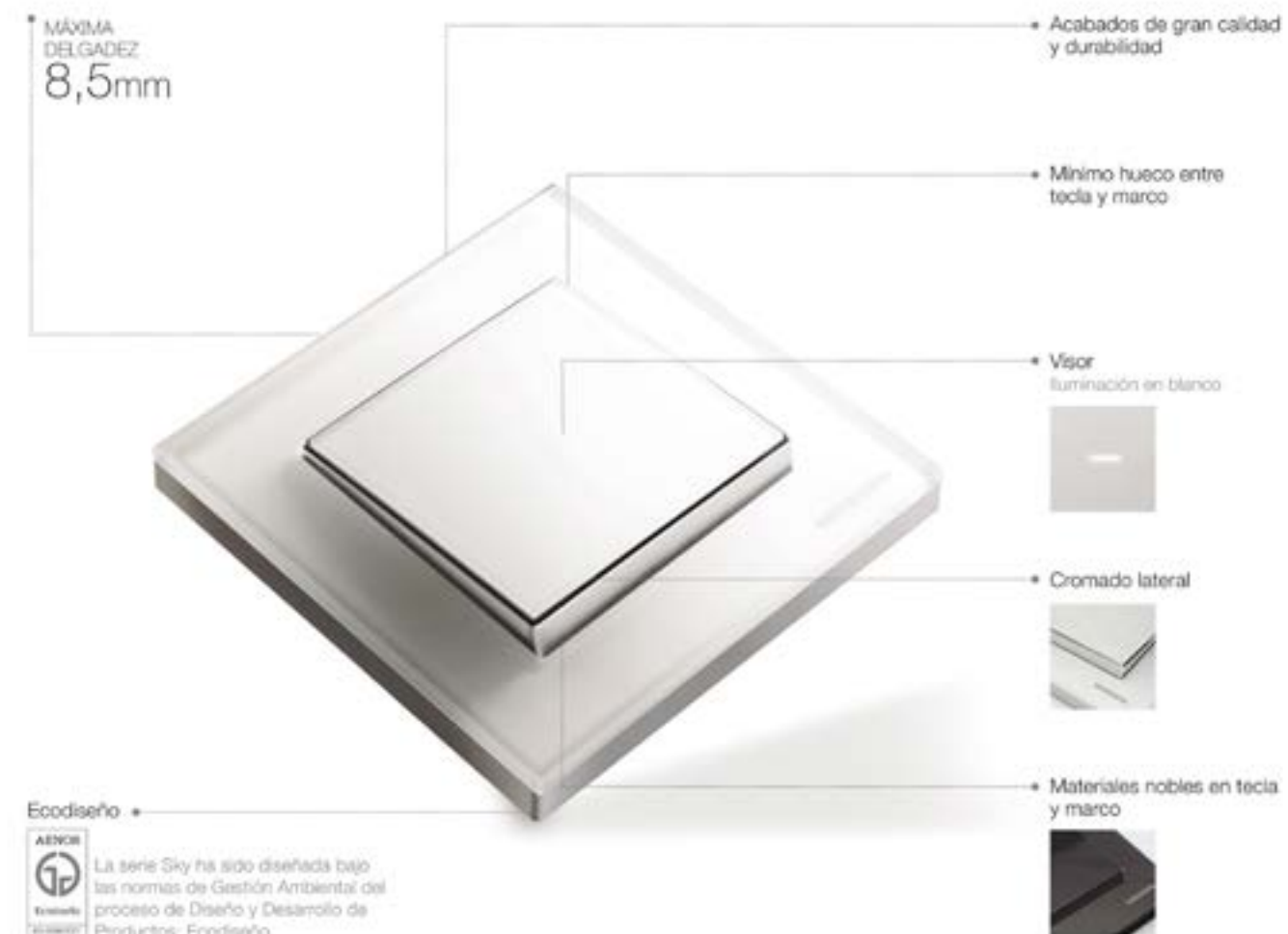


FINISHES

Switch ranges
Serie Sky Niessen



MÁXIMA DELGADUZ
8,5mm



Ecodiseño
AENOR
La serie Sky ha sido diseñada bajo las normas de Gestión Ambiental del proceso de Diseño y Desarrollo de Productos: Ecodiseño

Lighting
Interior

LUK FREIR, BMLIGHTING



Lighting
Interior

INDIRECT LIGHTING



Lighting
Exterior

EXTERIOR RECESSED LIGHTING



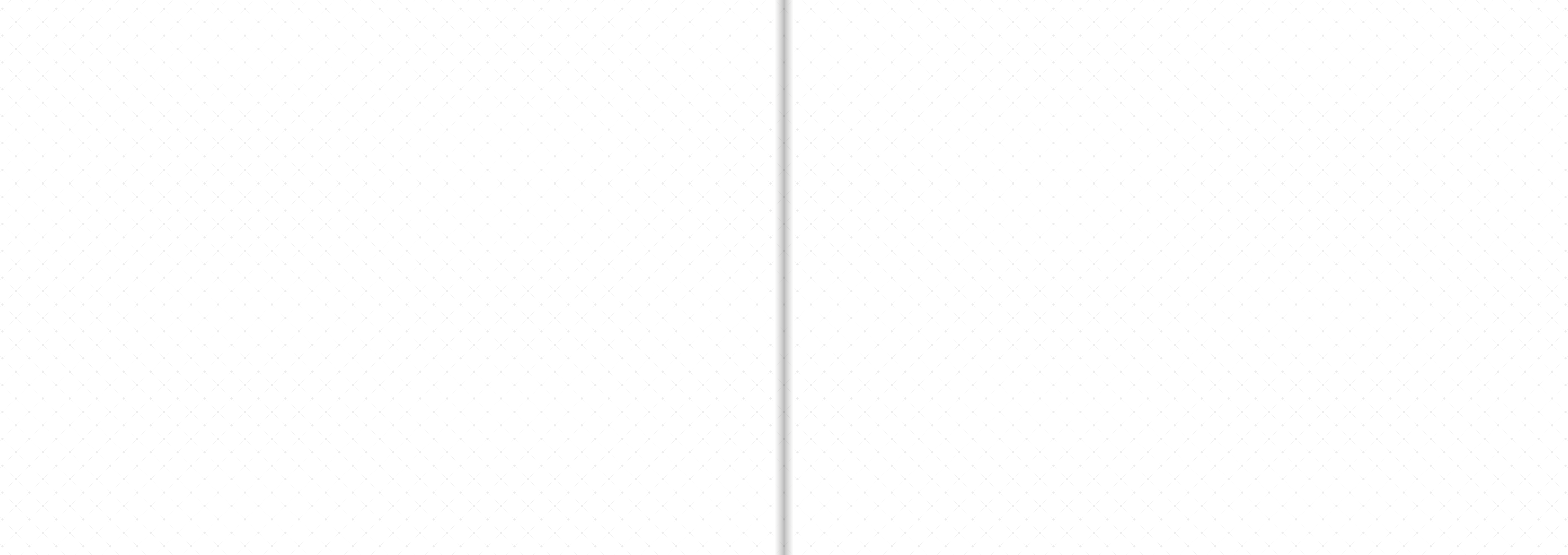
FINISHES

Lighting
Exterior
EXTERIOR WALL LIGHTING



Garage door
Sectional door







F L A
M I N
G O S

