

New Development  
**ELYSIUM GOLF**



**ELYSIUM**  
LA CALA RESORT

  
**Eliris**  
SMART LIVING



Photo by Tyler Garside

*where dreams  
come true*



---

**ELYSIUM**  
LA CALA RESORT



# ELYSIUM

...or The Champs Elysees was, in classical mythology, the place of residence for the fortunate and the blessed, a simile to what we know as The Paradise.

With this same principle we have conceived Elysium Golf. The idyllic setting to enjoy the light of southern Spain. A spot of Andalusia full of beauty and linked to the passion for Golf, one of the most practised sports worldwide at any age.

Incredible sunrises, radiant sunshine 320 days a year, the sea, nature, friendship, the best gastronomy, health and freedom are some of the sensations that Elysium Golf offers you.

Elysium Golf blossoms in a beautiful spot in the south of Andalusia, La Cala Golf Resort, a spectacular space in the heart of the Sierra de Mijas Natural Park with three of the best golf courses in Europe perfectly integrated into the landscape.

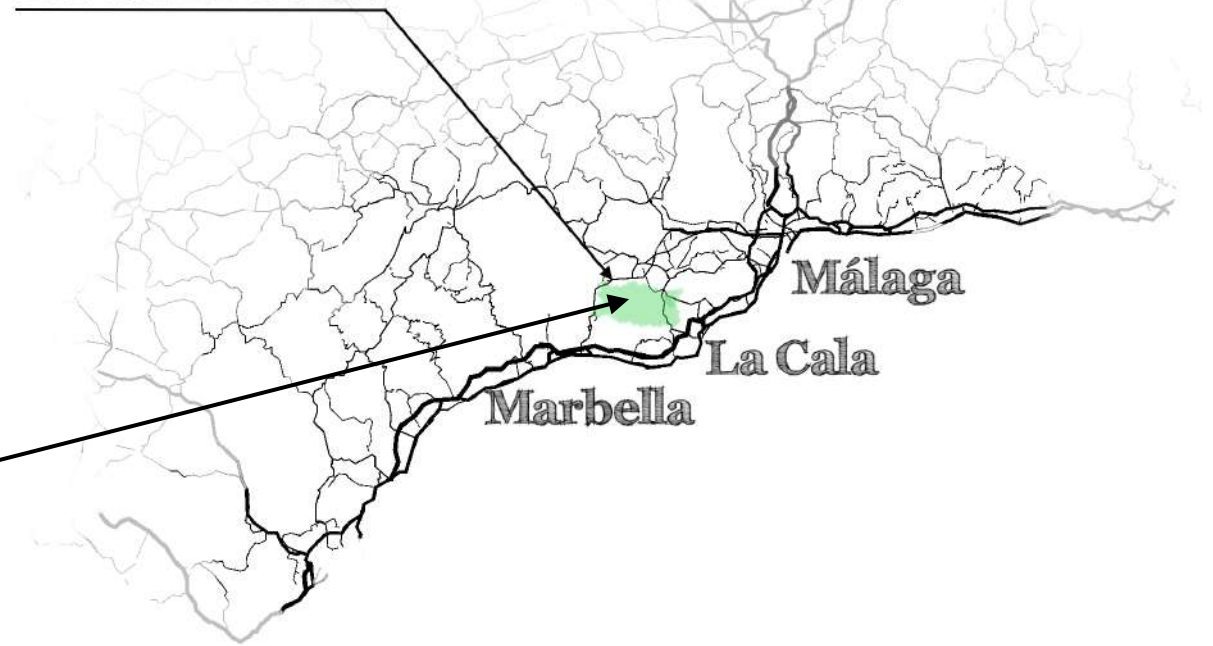
The villas of Elysium Golf are very close to the Club House, 10 minutes from the magnificent beaches of the Costa del Sol, between La Cala de Mijas and Fuengirola, and very well connected with Marbella, 20 minutes, and Malaga International Airport (AGP) just 30 minutes.

# LOCATION



ELYSIUM  
LA CALA RESORT

**LA CALA GOLF**





ELYSIUM  
LA CALA RESORT



*La Cala*  
GOLF HOTEL SPA  
MIJAS  SPAIN  
**ClubHouse**







# COSTA DEL SOL

From this privileged enclave, Elysium Golf, you can enjoy all the services offered by the Costa del Sol, one of the most exclusive destinations with the best quality of life in the world.

In addition to its unique climate and beaches, the Costa del Sol offers a great cultural agenda in its city, Malaga, the birthplace of Pablo Picasso, with numerous museums, film events and theatres like the new Antonio Banderas Theatre.

The gastronomy of the Costa del Sol is rich in both variety and flavour and there are infinite places where you can enjoy it, a restaurant on the beach, a tapas bar, o even haute cuisine with the best Michelin star chefs.

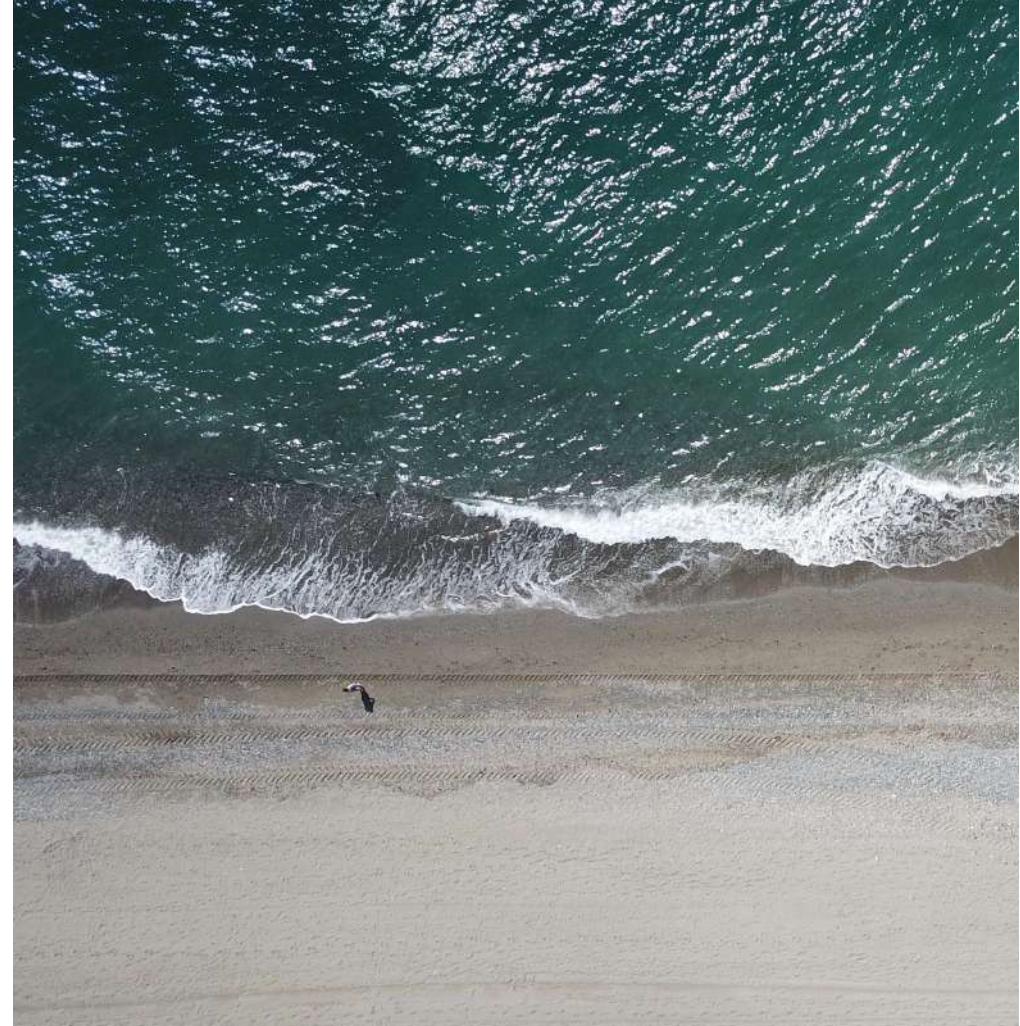
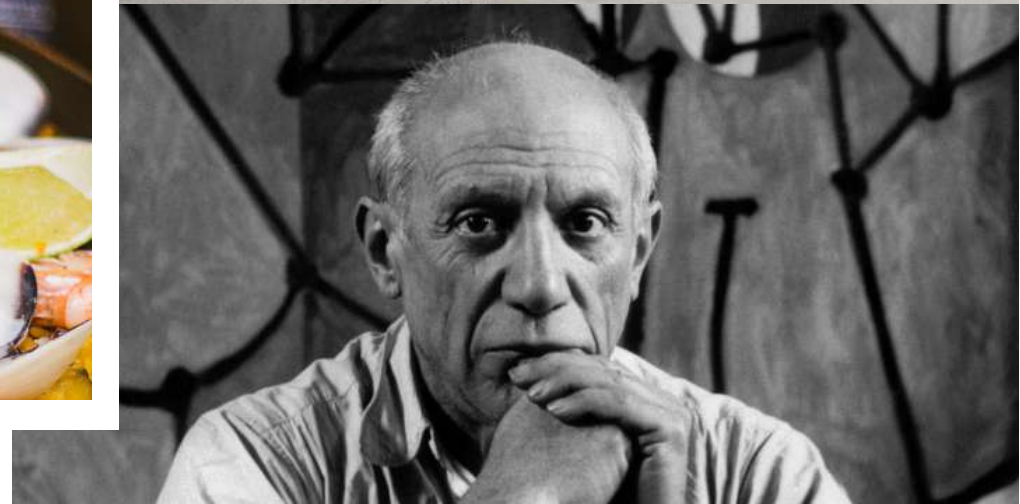


Photo by Emilio García



Photo by Kaitlin Dowis







THE VILLAS








Elysium Golf is composed of only 15 exclusive independent villas, with luxury qualities, avant-garde design, pure lines, neutral colours and large spaces, creating a perfect symbiosis with the natural environment where it is located.



Light and the sensation of freedom are the leading features of Elysium Golf, with double height areas, floor-to-ceiling windows and can be crowned by an optional large solarium terrace that covers the entire upper part of each of the houses.

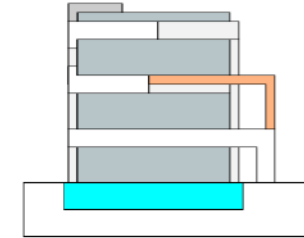


Comfort and quality of life are always present at Elysium Golf. Each villa has more than 300 m2 built area, private infinity pool, parking for two vehicles, several terraces and garden areas.

A modern dining room featuring a large, light-colored wooden dining table with a thick top. The table is set with white plates, silverware, and wine glasses. Two bottles of wine are placed on the table. The chairs are white with a textured fabric and wooden legs. The background wall is covered in vertical wood panels. A kitchen area with a glass-fronted oven is visible behind the table. A large window on the right side of the room offers a view of greenery outside. The lighting is warm and ambient, with two spherical pendant lights hanging over the table. A small potted plant is suspended from the ceiling. The floor is a light, neutral color.

All Elysium Golf villas are configurable and can be adapted to the taste of their owners with multiple options to make them unique homes. Underfloor heating throughout, leisure room, gym or spa, and even the possibility of including up to two more bedrooms.

# Villa Type A

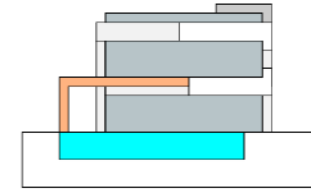


Terraces	116,79 m <sup>2</sup>
First floor	75,90 m <sup>2</sup>
Ground floor	105,07 m <sup>2</sup>
Basement	126,57 m <sup>2</sup>
<b>Total built area</b>	<b>424,33 m<sup>2</sup></b>



ELYSIUM  
LA CALA RESORT

# Villa Type B



Terraces 105,45 m<sup>2</sup>

First floor 75,90 m<sup>2</sup>

Ground floor 105,07 m<sup>2</sup>

Basement 105,35 m<sup>2</sup>

**Total built area 391,77 m<sup>2</sup>**



ELYSIUM  
LA CALA RESORT











# QUALITY SPECIFICATIONS

## Structure

Reinforced concrete structure, according to project specifications and according to the technical code of building procedures and regulations.

## Roofs

Roof - Walkable flat solarium, finished in anti-slip ceramic tiles and external platform composite with wide striped finish plus fine striped, composed of high durability materials and polymers in the solarium area.

## Façade

Facades finished with three different materials, the main volume in monolayer material in white, the volume of staircase finished with rectangular shaped ceramic pieces of different sizes and a third volume with fair-faced concrete finish. All thermally and acoustically insulated with higher levels than those required on the technical code of building procedures and regulations.

## Walls

Main enclosure of double wall of ceramic brick lined with cement mortar, intermediate chamber and thermal insulation of fibreglass and double hollow brick partition of 30x15x7.

Layout with interior partitions of double hollow brick 30x15x7.

False ceiling of laminated plaster plates and acoustic insulation of rock wool where necessary. With indirect light and hollow for curtains.

Registers in ceilings of toilets for the air conditioning equipments.

Interior walls plastered in pearlite with smooth plastic paint on vertical and horizontal walls of the whole house.

## Flooring

Interior flooring of large-format porcelain tiles.

Wooden floors in bedrooms.

Walkable exterior floors in non-slip porcelain tiles.

In basement floor of polished concrete screed.

## Exterior carpentry

Aluminium exterior carpentry, with thermal bridge break. Double glazing with inner chamber, solar and acoustic protection where necessary.

Elevating slides in living rooms and bedrooms and windows.

Motorized lacquered aluminium shutters with automatic closing system.

## Interior carpentry

Armoured access door to the dwelling with pivoting opening and with security lock and finished as the rest of the carpentry. -

Lacquered doors or sliding doors.

Built-in wardrobes lacquered from floor to ceiling, lined and equipped inside with interior partitions, hanging rods, trunk and shoe rack.

## Wall cladding

Walls with smooth washable and fungicidal paint throughout the house.

In bathrooms and toilets, first quality porcelain tiles (partially covering the vertical walls).

## Sanitary appliances

All sanitary fittings shall be of first quality vitrified white porcelain of best brands.

Bathrooms with the best brands with toilets, washbasins and bidets suspended from the wall.

Low profile shower tray and exempt bathtub.

First class brand single-lever taps.

In shower and bath thermostatic faucet.

Tailor-made lacquered furniture with mirror in bathrooms.

## Kitchens

Fully fitted kitchens with a straight front and island made with high-pressure laminated board of the highest quality.

Techlam® Top worktop and tops, porcelain material in two different finishes. Two different textures, which satisfy the demands of the latest trends in kitchen equipment.

Sink with removable tap.

Appliances from leading brands, including induction hob, cooker extractor hood, electric oven, combi fridge, dishwasher, washer-dryer and microwave ovens.

# QUALITY SPECIFICATIONS

## Installations

Heating system by under floor heating throughout the house and air conditioning.

Individual production of hot water with solar panels and storage tank.

The house will have a basic domotics system.

## Plumbing and sanitation installation

Rigid PVC pipings

Cross-linked polyethylene pipes with insulation in all hot and cold water installations

Hot water recirculation system

Hot water by means of an electric boiler

Siphonic trap in all bathrooms.

Soundproofed PVC drainage pipes, including elbows and branches.

## Electricity installation

Low voltage wiring inside homes complying with all current regulations.

Top quality mechanisms.

Lighting with fully installed LED spotlights.

TV sockets in living room, bedrooms and terraces.

## Telephone

Telephone sockets

## Communal areas

Street with articulated pavement and grass to maximize its integration with the environment according to the specific landscaping project, to access the private parking of each of the houses.

Security system in the urbanization.

Spacious garden areas with an exclusive landscaping design.

La información contenida en este documento no tiene carácter contractual, y puede ser modificada por exigencias de orden técnico, jurídico o comercial, sin que ello implique menoscabo en el nivel global de calidades.

The information contained in this document is of a non-contractual nature and may be modified due to technical, legal or sales distribution reasons, without prejudice to the overall level of quality.





*ticking all the boxes*



Prime Location



New build



Avant-Garde Design



Walking distance to amenities



Unbeatable Price



Short distance to everything



**ELYSIUM**

---

LA CALA RESORT



**MARIANO MORRONE**  
Arquitecto - Interiorista





# CONTACT

|

|



ELYSIUM  
LA CALA RESORT



**ELYSIUM**

---

LA CALA RESORT