

# the view

FUENGIROLA

PARCELA UE 8.2-8.3  
"SOLVILLA", FUENGIROLA. MÁLAGA

UNIT NUMBER: 8  
APARTMENT TYPE: 3 BED/ 2 BATH

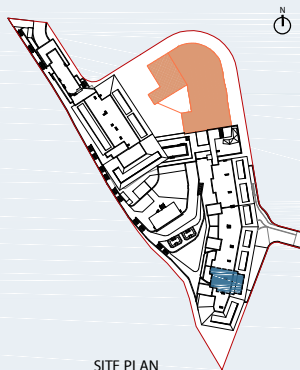
PORTAL 1  
FLOOR: THIRD FLOOR (+42,45)  
DOOR: B

### BUILT SURFACE AREA

BUILT INTERIOR:	97,69 m <sup>2</sup>
COVERED TERRACE:	0,00 m <sup>2</sup>
OPEN TERRACE:	23,64 m <sup>2</sup>
TOTAL BUILT:	121,33 m <sup>2</sup>

### SURFACES ACCORDING TO R.D. 515/1989

USEFUL AREA:	107,46 m <sup>2</sup>
GROSS AREA:	154,37 m <sup>2</sup>



SITE PLAN



GARAGE AND STORAGE LOCATION  
(LEVEL +29,25M)

- STORE ROOM N° 32
- PARKING PLACE N° 56 AND N° 61

(\*) "The areas are approximate and could vary for technical reasons, during the execution of works"  
(\*\*) "Gross and useful areas include 100% covered terrace"

