

the view

FUENGIROLA

PARCELA UE 8.2-8.3
"SOLVILLA", FUENGIROLA. MÁLAGA

UNIT NUMBER: 3
APARTMENT TYPE: 3 BED/ 2 BATH

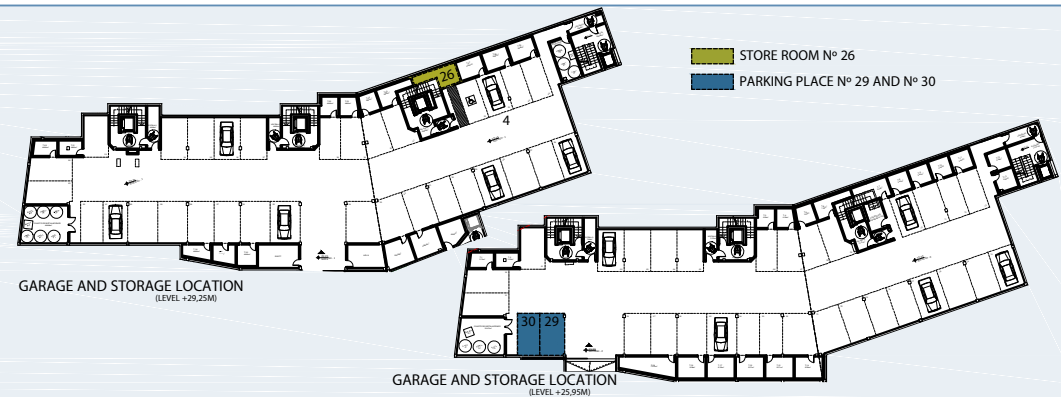
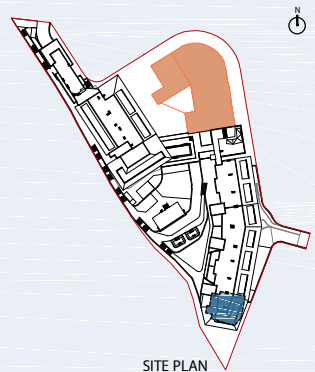
PORTAL 1
FLOOR: FIRST FLOOR (+35,85)
DOOR: A

BUILT SURFACE AREA

BUILT INTERIOR:	106,49 m ²
COVERED TERRACE:	50,02 m ²
OPEN TERRACE:	0,00 m ²
TOTAL BUILT:	156,51 m ²

SURFACES ACCORDING TO R.D. 515/1989

USEFUL AREA:	117,14 m ²
GROSS AREA:	172,66 m ²



(*) "The areas are approximate and could vary for technical reasons, during the execution of works"
(**) "Gross and useful areas include 100% covered terrace"