

the view

FUENGIROLA

PARCELA UE 8.2-8.3
"SOLVILLA", FUENGIROLA. MÁLAGA

UNIT NUMBER: 16
APARTMENT TYPE: 2 BED/ 2 BATH

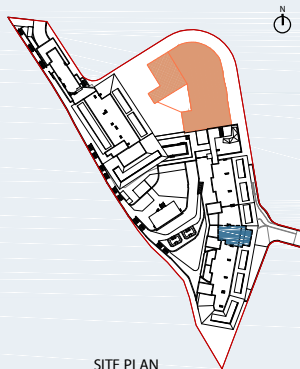
PORTAL 2
FLOOR: THIRD FLOOR (+42,45)
DOOR: B

BUILT SURFACE AREA

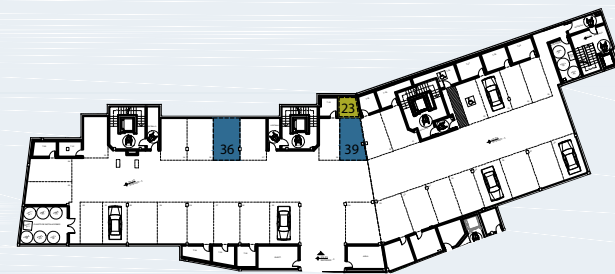
BUILT INTERIOR:	79,89 m ²
COVERED TERRACE:	0,00 m ²
OPEN TERRACE:	19,46 m ²
TOTAL BUILT:	99,35 m ²

SURFACES ACCORDING TO R.D. 515/1989

USEFUL AREA:	87,88 m ²
GROSS AREA:	126,27 m ²



SITE PLAN



GARAGE AND STORAGE LOCATION
(LEVEL +29,25M)

- STORE ROOM N° 23
- PARKING PLACE N° 36 AND N° 39

(*) "The areas are approximate and could vary for technical reasons, during the execution of works"
(**) "Gross and useful areas include 100% covered terrace"

