

# the view

FUENGIROLA

PARCELA UE 8.2-8.3  
"SOLVILLA", FUENGIROLA. MÁLAGA

UNIT NUMBER: 15  
APARTMENT TYPE: 3 BED/ 2 BATH

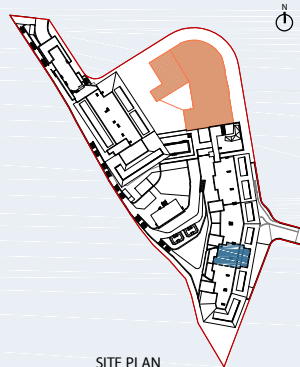
PORTAL 2  
FLOOR: THIRD FLOOR (+42,45)  
DOOR: A

### BUILT SURFACE AREA

BUILT INTERIOR:	97,68 m <sup>2</sup>
COVERED TERRACE:	0,00 m <sup>2</sup>
OPEN TERRACE:	22,69 m <sup>2</sup>
TOTAL BUILT:	120,37 m <sup>2</sup>

### SURFACES ACCORDING TO R.D. 515/1989

USEFUL AREA:	107,45 m <sup>2</sup>
GROSS AREA:	154,27 m <sup>2</sup>



SITE PLAN



GARAGE AND STORAGE LOCATION  
(LEVEL +29,25M)

- STORE ROOM N° 22
- PARKING PLACE N° 35 AND N° 38

(\*) "The areas are approximate and could vary for technical reasons, during the execution of works"  
(\*\*) "Gross and useful areas include 100% covered terrace"

