

the view

FUENGIROLA

PARCELA UE 8.2-8.3
"SOLVILLA", FUENGIROLA. MÁLAGA

UNIT NUMBER: 14
APARTMENT TYPE: 2 BED/ 2 BATH

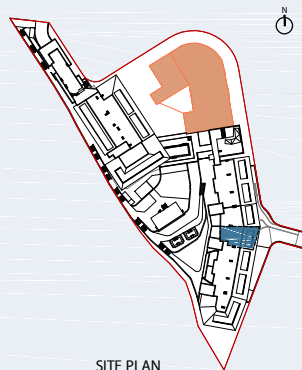
PORTAL 2
FLOOR: SECOND FLOOR (+39,15)
DOOR: B

BUILT SURFACE AREA

BUILT INTERIOR:	87,69 m ²
COVERED TERRACE:	32,36 m ²
OPEN TERRACE:	0,00 m ²
TOTAL BUILT:	120,05 m ²

SURFACES ACCORDING TO R.D. 515/1989

USEFUL AREA:	96,46 m ²
GROSS AREA:	139,50 m ²



SITE PLAN



GARAGE AND STORAGE LOCATION
(LEVEL +29,25M)

- STORE ROOM N° 33
- PARKING PLACE N° 57 AND N° 60

(*) "The areas are approximate and could vary for technical reasons, during the execution of works"
(**)"Gross and useful areas include 100% covered terrace"

