

the view

FUENGIROLA

PARCELA UE 8.2-8.3
"SOLVILLA", FUENGIROLA. MÁLAGA

UNIT NUMBER: 13
APARTMENT TYPE: 3 BED/ 2 BATH

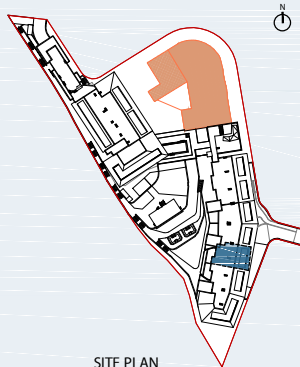
PORTAL 2
FLOOR: SECOND FLOOR (+39,15)
DOOR: A

BUILT SURFACE AREA

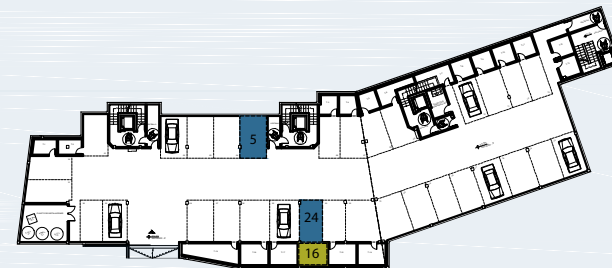
BUILT INTERIOR:	106,55 m ²
COVERED TERRACE:	31,78 m ²
OPEN TERRACE:	0,00 m ²
TOTAL BUILT:	138,33 m ²

SURFACES ACCORDING TO R.D. 515/1989

USEFUL AREA:	117,21 m ²
GROSS AREA:	168,87 m ²



SITE PLAN



GARAGE AND STORAGE LOCATION
(LEVEL +25,95M)

- STORE ROOM Nº 16
- PARKING PLACE Nº 5 AND Nº 24

(*) "The areas are approximate and could vary for technical reasons, during the execution of works"
(**) "Gross and useful areas include 100% covered terrace"

