

the view

FUENGIROLA

PARCELA UE 8.2-8.3
"SOLVILLA", FUENGIROLA. MÁLAGA

UNIT NUMBER: 12
APARTMENT TYPE: 2 BED/ 2 BATH

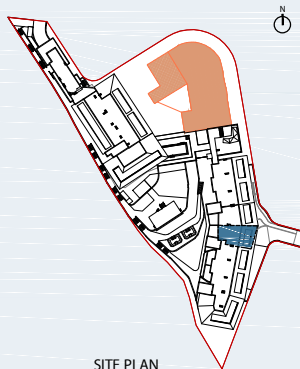
PORTAL 2
FLOOR: FIRST FLOOR (+35,85)
DOOR: B

BUILT SURFACE AREA

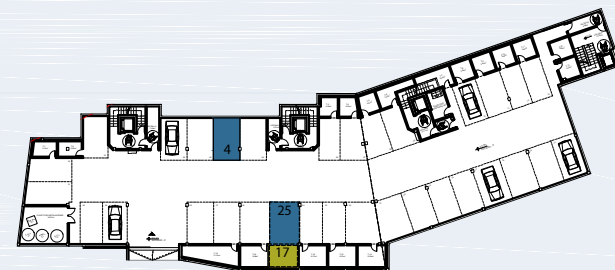
| | |
|------------------|-----------------------|
| BUILT INTERIOR: | 88,12 m ² |
| COVERED TERRACE: | 32,36 m ² |
| OPEN TERRACE: | 0,00 m ² |
| TOTAL BUILT: | 120,48 m ² |

SURFACES ACCORDING TO R.D. 515/1989

| | |
|--------------|-----------------------|
| USEFUL AREA: | 96,93 m ² |
| GROSS AREA: | 140,17 m ² |



SITE PLAN



GARAGE AND STORAGE LOCATION
(LEVEL +25,95M)

- STORE ROOM Nº 17
- PARKING PLACE Nº 4 AND Nº 25

(*) "The areas are approximate and could vary for technical reasons, during the execution of works"
(**)"Gross and useful areas include 100% covered terrace"

