

the view

FUENGIROLA

PARCELA UE 8.2-8.3
"SOLVILLA", FUENGIROLA. MÁLAGA

UNIT NUMBER: 10
APARTMENT TYPE: 3 BED/ 2 BATH

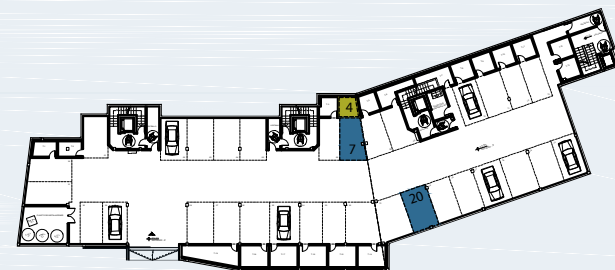
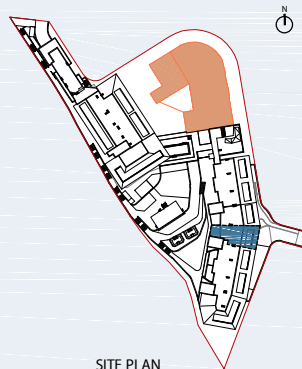
PORTAL 2
FLOOR: GROUND FLOOR (+32,55)
DOOR: B

BUILT SURFACE AREA

BUILT INTERIOR:	88,18 m ²
COVERED TERRACE:	32,36 m ²
OPEN TERRACE:	19,77 m ²
TOTAL BUILT:	140,31 m ²

SURFACES ACCORDING TO R.D. 515/1989

USEFUL AREA:	97,00 m ²
GROSS AREA:	141,85 m ²



- STORE ROOM Nº 4
- PARKING PLACE Nº 7 AND Nº 20

(*) "The areas are approximate and could vary for technical reasons, during the execution of works"
(**) "Gross and useful areas include 100% covered terrace"