



GOLDEN VIEW II
BAHIA DE LAS ROCAS
Quiet Living



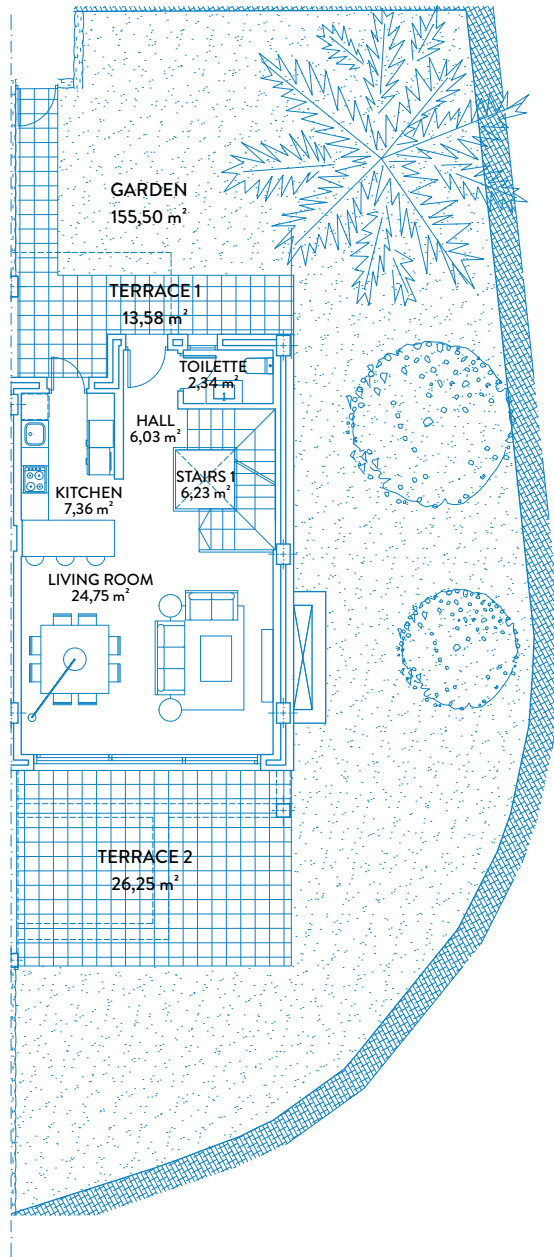
FLOOR PLANS



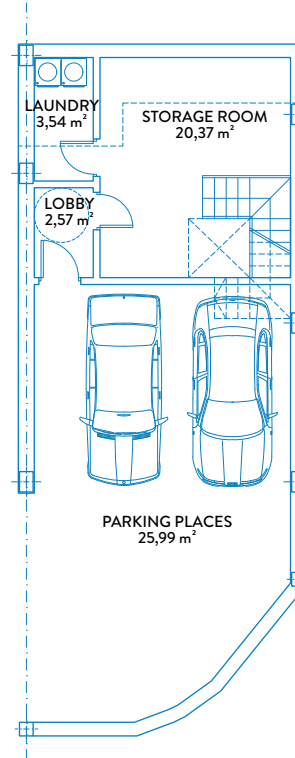
TOWNHOUSE 1

TIPE A2

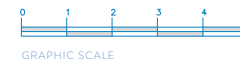
GROUND FLOOR & BASEMENT



GROUND FLOOR



BASEMENT



CONSTRUCTED AREAS

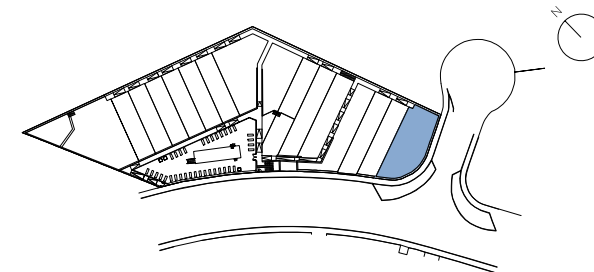
Townhouse area	144,94 m ²
Basement area	59,40 m ²
Solarium area	46,35 m ²
Terrace area	47,60 m ²
Garden area	155,50 m ²

USEFUL AREAS

Townhouse area	112,81 m ²
Basement area	52,47 m ²

BOJA AREAS

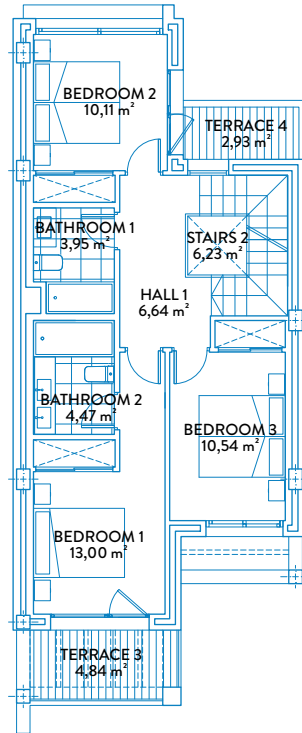
Useful area	124,09 m ²
Constructed area	159,43 m ²



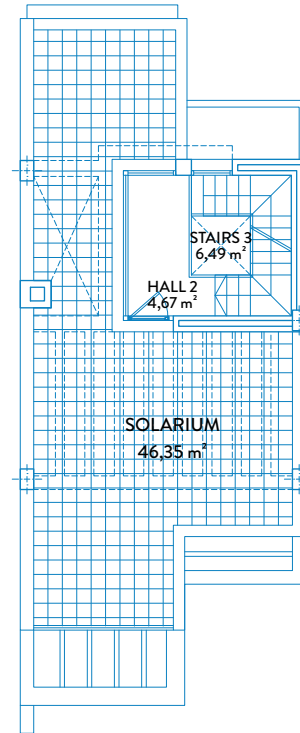
TOWNHOUSE 1

TIPE A2

FIRST FLOOR & SOLARIUM



FIRST FLOOR



SOLARIUM

CONSTRUCTED AREAS

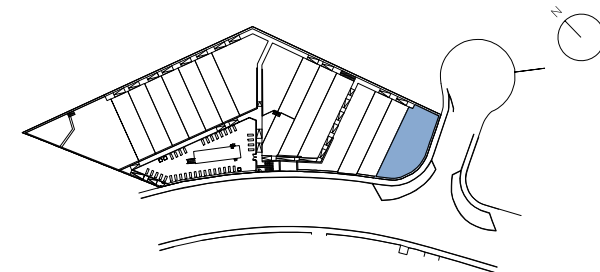
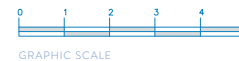
Townhouse area	144,94 m ²
Basement area	59,40 m ²
Solarium area	46,35 m ²
Terrace area	47,60 m ²
Garden area	155,50 m ²

USEFUL AREAS

Townhouse area	112,81 m ²
Basement area	52,47 m ²

BOJA AREAS

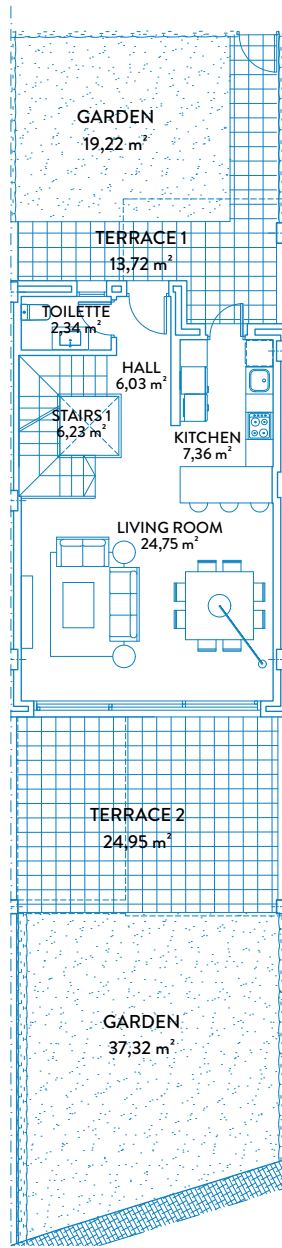
Useful area	124,09 m ²
Constructed area	159,43 m ²



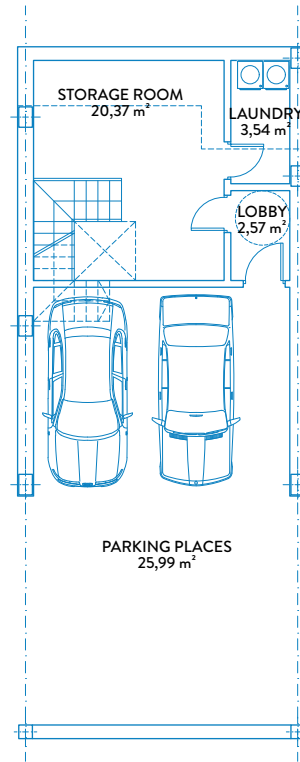
TOWNHOUSE 2

TIPE A

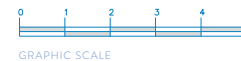
GROUND FLOOR & BASEMENT



GROUND FLOOR



BASEMENT



CONSTRUCTED AREAS

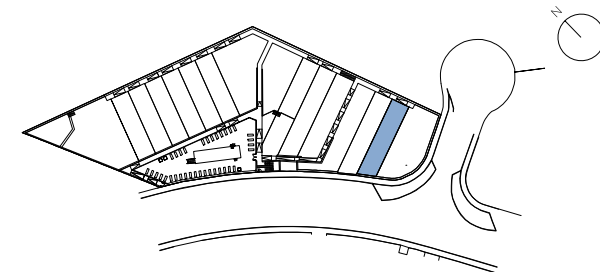
Townhouse area	139,34 m ²
Basement area	59,40 m ²
Solarium area	46,35 m ²
Terrace area	48,59 m ²
Garden area	56,54 m ²

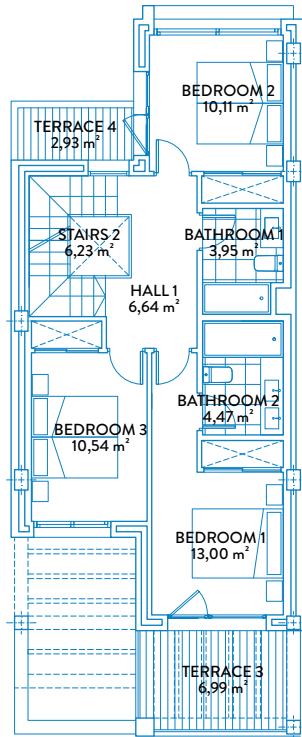
USEFUL AREAS

Townhouse area	112,81 m ²
Basement area	52,47 m ²

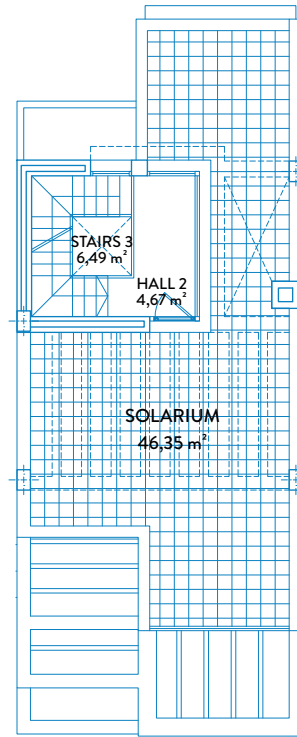
BOJA AREAS

Useful area	124,09 m ²
Constructed area	153,27 m ²





FIRST FLOOR



SOLARIUM

CONSTRUCTED AREAS

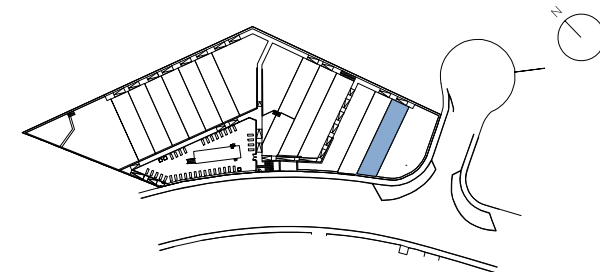
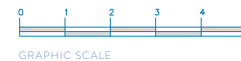
Townhouse area	139,34 m ²
Basement area	59,40 m ²
Solarium area	46,35 m ²
Terrace area	48,59 m ²
Garden area	56,54 m ²

USEFUL AREAS

Townhouse area	112,81 m ²
Basement area	52,47 m ²

BOJA AREAS

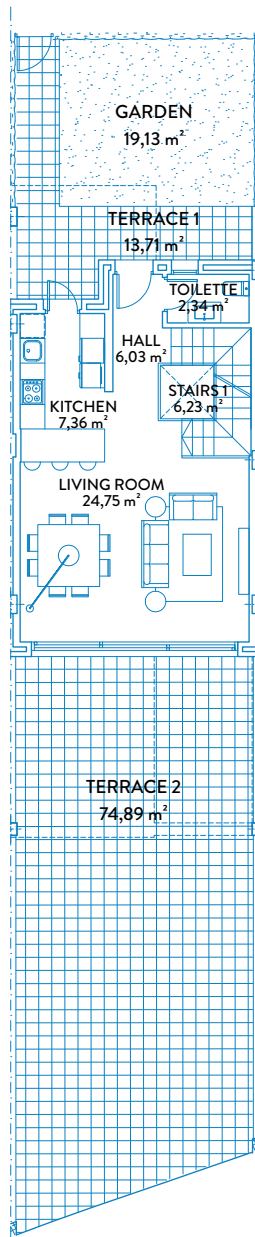
Useful area	124,09 m ²
Constructed area	153,27 m ²



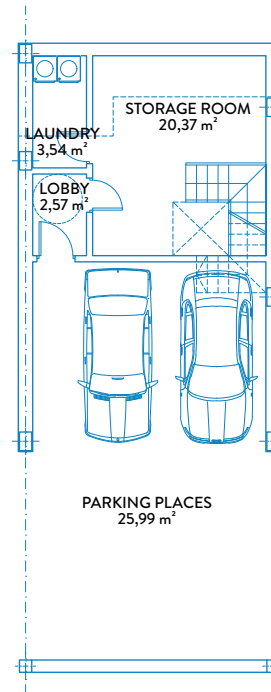
TOWNHOUSE 3

TIPE A

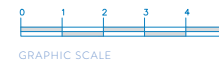
GROUND FLOOR & BASEMENT



GROUND FLOOR



BASEMENT



CONSTRUCTED AREAS

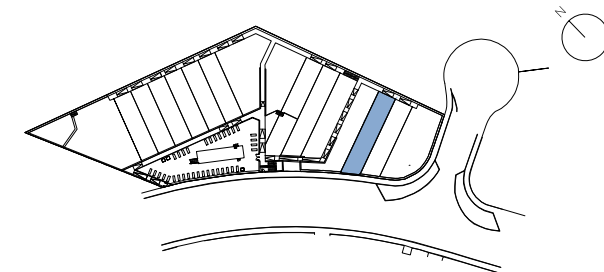
Townhouse area	139,34 m ²
Basement area	59,40 m ²
Solarium area	46,35 m ²
Terrace area	98,52 m ²
Garden area	19,13 m ²

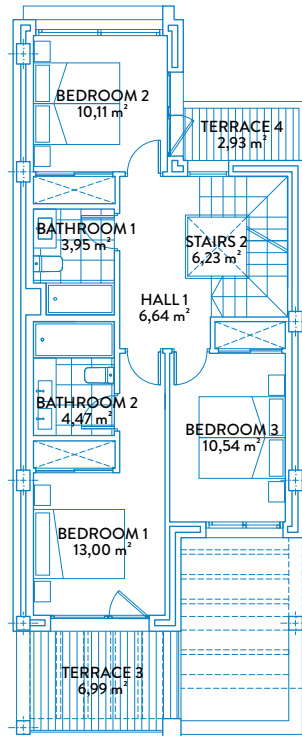
USEFUL AREAS

Townhouse area	112,81 m ²
Basement area	52,47 m ²

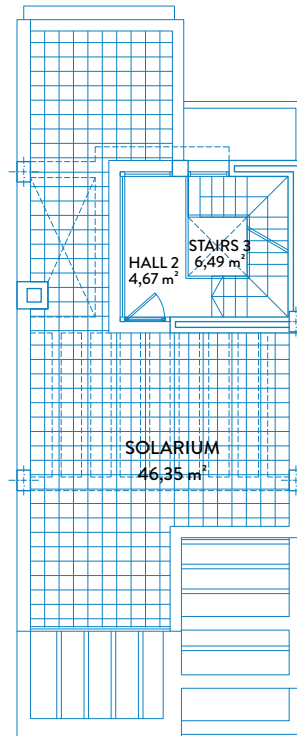
BOJA AREAS

Useful area	124,09 m ²
Constructed area	153,27 m ²





FIRST FLOOR



SOLARIUM



CONSTRUCTED AREAS

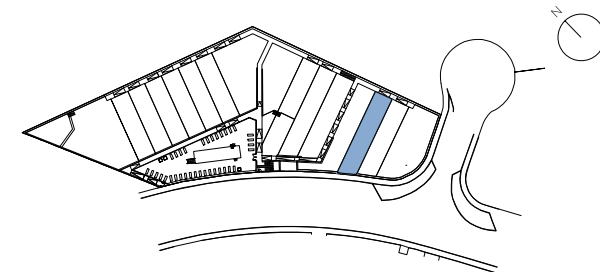
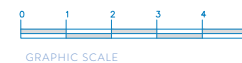
Townhouse area	139,34 m ²
Basement area	59,40 m ²
Solarium area	46,35 m ²
Terrace area	98,52 m ²
Garden area	19,13 m ²

USEFUL AREAS

Townhouse area	112,81 m ²
Basement area	52,47 m ²

BOJA AREAS

Useful area	124,09 m ²
Constructed area	153,27 m ²

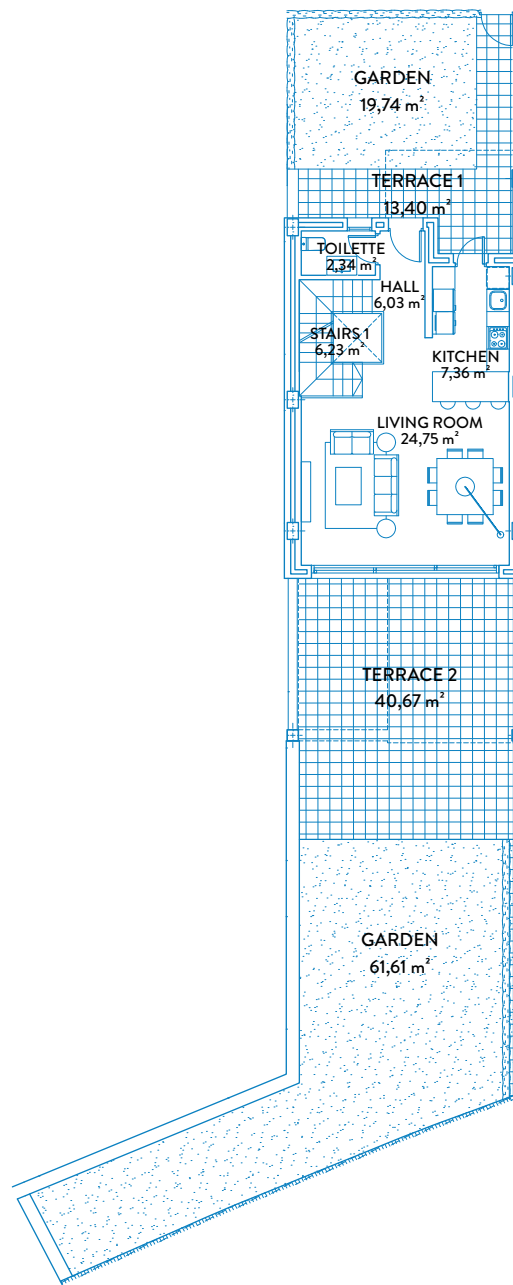


TOWNHOUSE 4

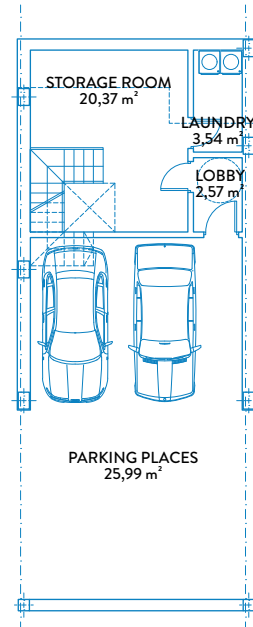


TIPE A

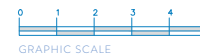
GROUND FLOOR & BASEMENT



GROUND FLOOR



BASEMENT



CONSTRUCTED AREAS

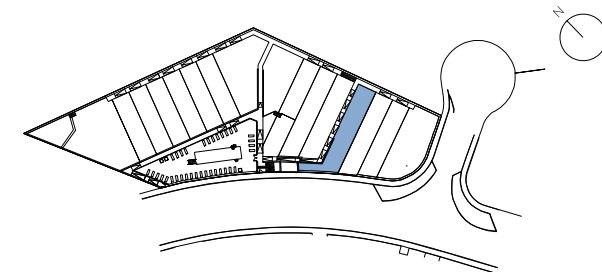
Townhouse area	139,34 m ²
Basement area	59,40 m ²
Solarium area	46,35 m ²
Terrace area	63,99 m ²
Garden area	81,35 m ²

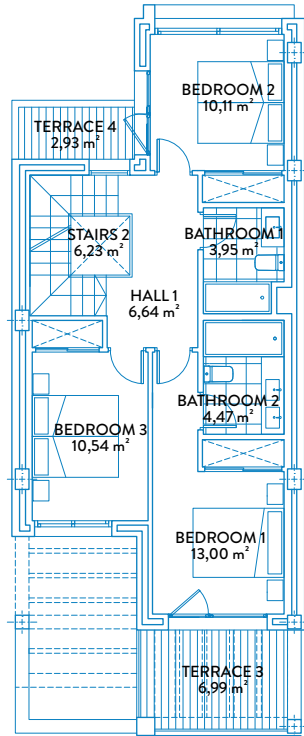
USEFUL AREAS

Townhouse area	112,81 m ²
Basement area	52,47 m ²

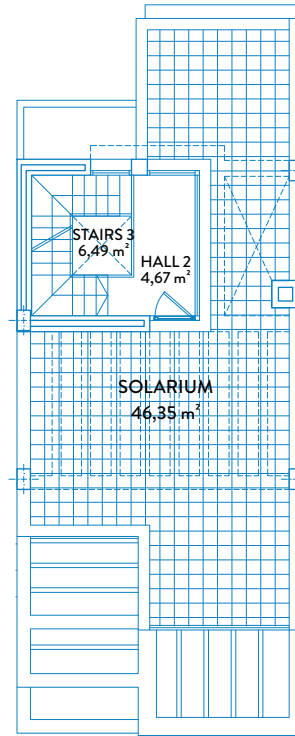
BOJA AREAS

Useful area	124,09 m ²
Constructed area	153,27 m ²





FIRST FLOOR



SOLARIUM



CONSTRUCTED AREAS

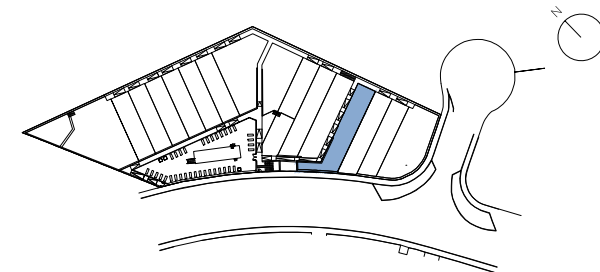
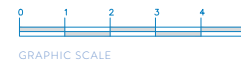
Townhouse area	139,34 m ²
Basement area	59,40 m ²
Solarium area	46,35 m ²
Terrace area	63,99 m ²
Garden area	81,35 m ²

USEFUL AREAS

Townhouse area	112,81 m ²
Basement area	52,47 m ²

BOJA AREAS

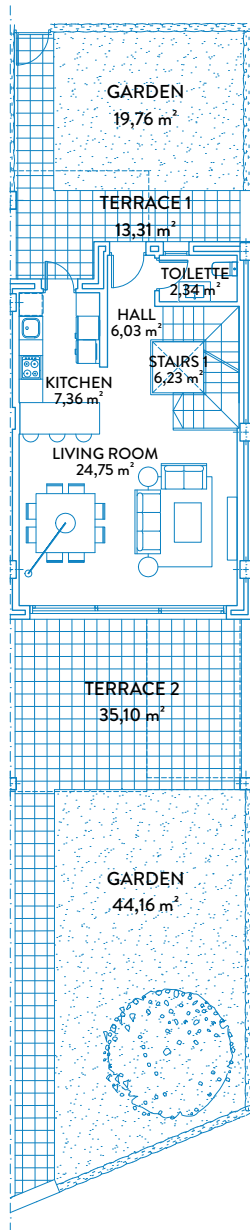
Useful area	124,09 m ²
Constructed area	153,27 m ²



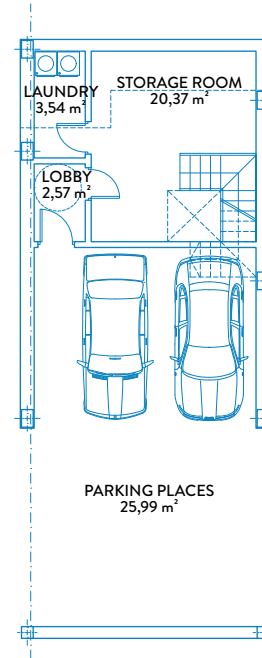
TOWNHOUSE 5

TIPE A

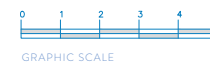
GROUND FLOOR & BASEMENT



GROUND FLOOR



BASEMENT



CONSTRUCTED AREAS

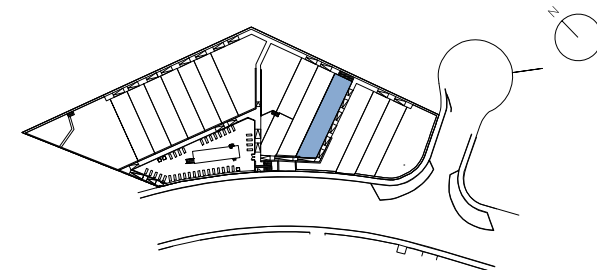
Townhouse area	139,34 m ²
Basement area	59,40 m ²
Solarium area	46,35 m ²
Terrace area	58,33 m ²
Garden area	63,92 m ²

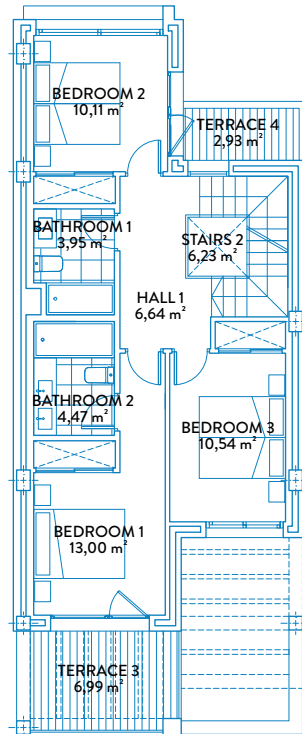
USEFUL AREAS

Townhouse area	112,81 m ²
Basement area	52,47 m ²

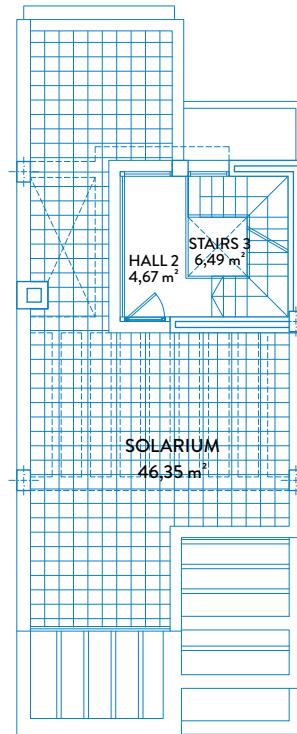
BOJA AREAS

Useful area	124,09 m ²
Constructed area	153,27 m ²





FIRST FLOOR



SOLARIUM



CONSTRUCTED AREAS

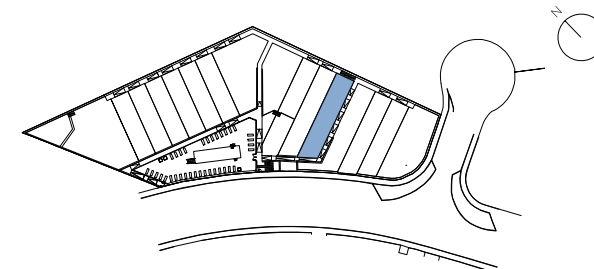
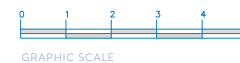
Townhouse area	139,34 m ²
Basement area	59,40 m ²
Solarium area	46,35 m ²
Terrace area	58,33 m ²
Garden area	63,92 m ²

USEFUL AREAS

Townhouse area	112,81 m ²
Basement area	52,47 m ²

BOJA AREAS

Useful area	124,09 m ²
Constructed area	153,27 m ²

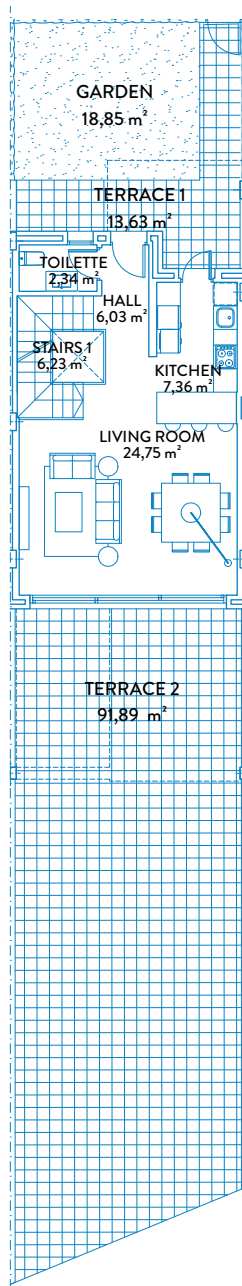


TOWNHOUSE 6

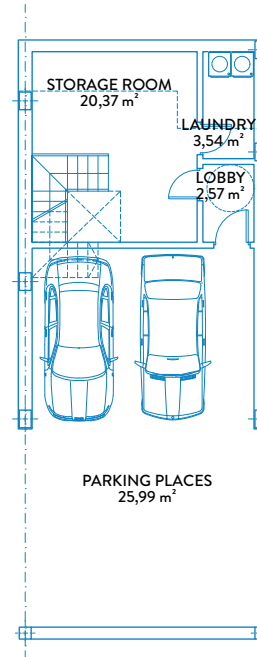


TIPE A

GROUND FLOOR & BASEMENT



GROUND FLOOR



BASEMENT



CONSTRUCTED AREAS

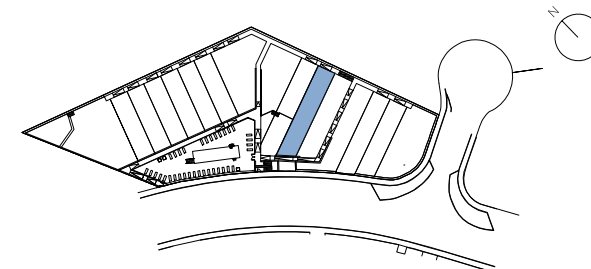
Townhouse area	139,34 m ²
Basement area	59,40 m ²
Solarium area	46,35 m ²
Terrace area	115,44 m ²
Garden area	18,85 m ²

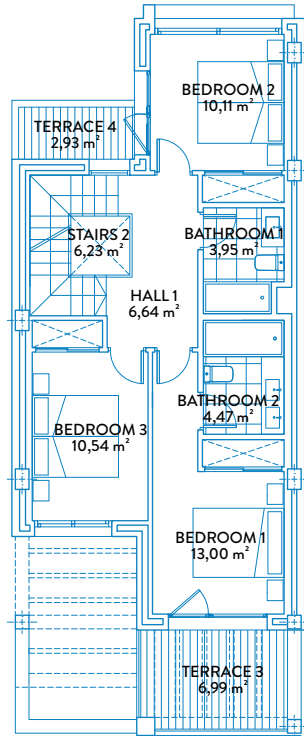
USEFUL AREAS

Townhouse area	112,81 m ²
Basement area	52,47 m ²

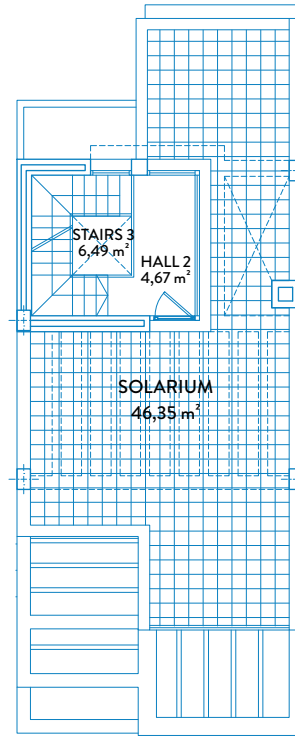
BOJA AREAS

Useful area	124,09 m ²
Constructed area	153,27 m ²





FIRST FLOOR



SOLARIUM



CONSTRUCTED AREAS

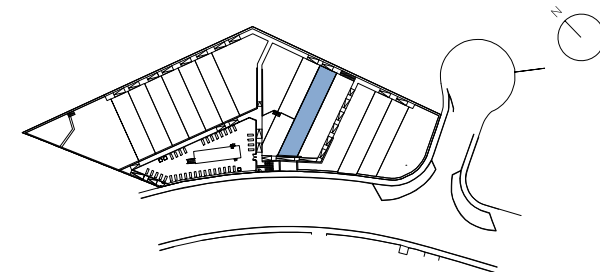
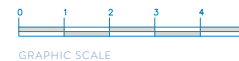
Townhouse area	139,34 m ²
Basement area	59,40 m ²
Solarium area	46,35 m ²
Terrace area	115,44 m ²
Garden area	18,85 m ²

USEFUL AREAS

Townhouse area	112,81 m ²
Basement area	52,47 m ²

BOJA AREAS

Useful area	124,09 m ²
Constructed area	153,27 m ²

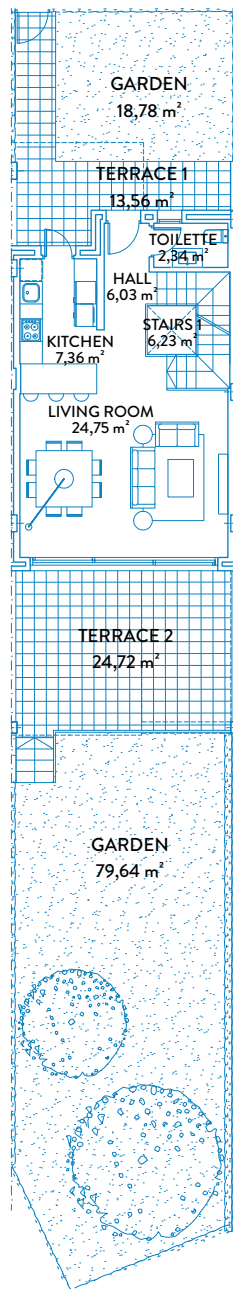


TOWNHOUSE 7

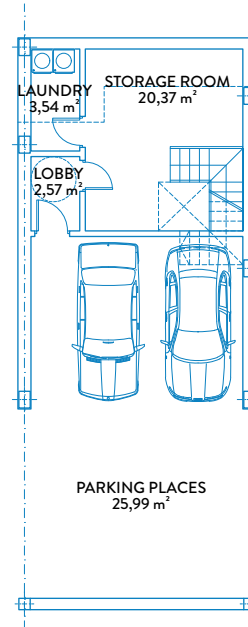


TIPE A

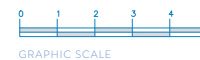
GROUND FLOOR & BASEMENT



GROUND FLOOR



BASEMENT



CONSTRUCTED AREAS

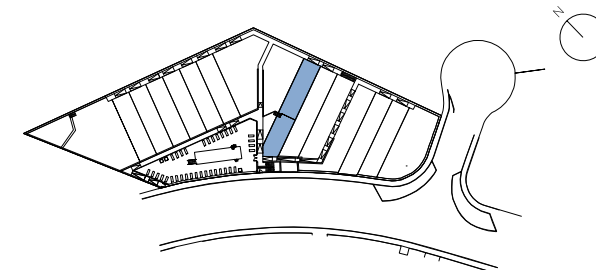
Townhouse area	139,34 m ²
Basement area	59,40 m ²
Solarium area	46,35 m ²
Terrace area	48,20 m ²
Garden area	98,42 m ²

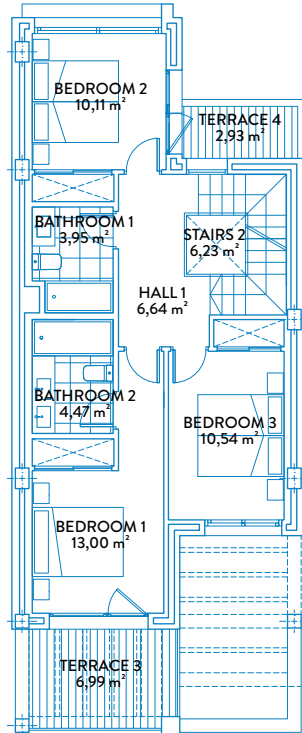
USEFUL AREAS

Townhouse area	112,81 m ²
Basement area	52,47 m ²

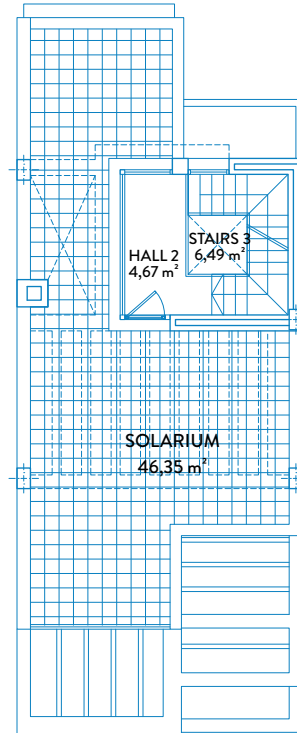
BOJA AREAS

Useful area	124,09 m ²
Constructed area	153,27 m ²





FIRST FLOOR



SOLARIUM



CONSTRUCTED AREAS

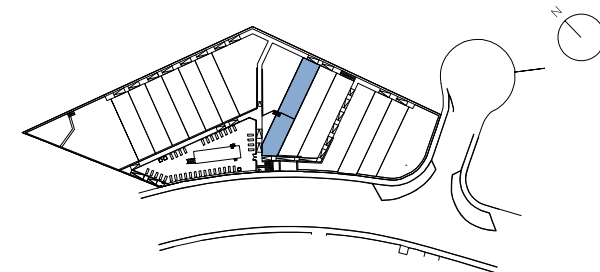
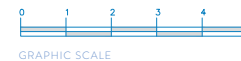
Townhouse area	139,34 m ²
Basement area	59,40 m ²
Solarium area	46,35 m ²
Terrace area	48,20 m ²
Garden area	98,42 m ²

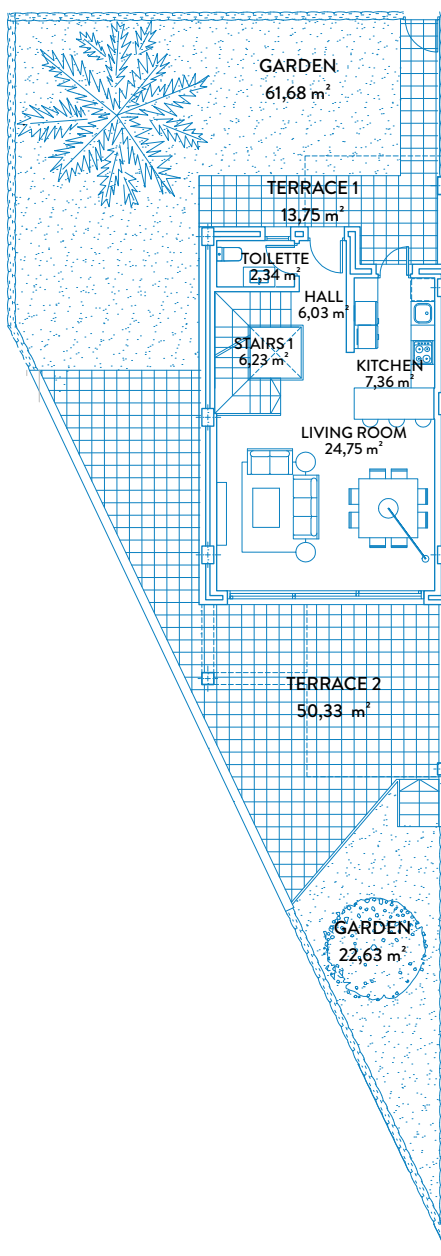
USEFUL AREAS

Townhouse area	112,81 m ²
Basement area	52,47 m ²

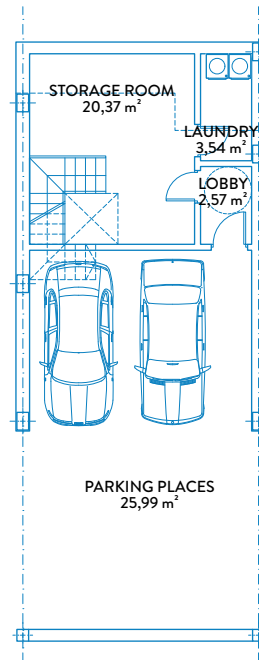
BOJA AREAS

Useful area	124,09 m ²
Constructed area	153,27 m ²

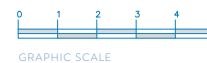




GROUND FLOOR



BASEMENT



TOWNHOUSE 8

TIPE A1

GROUND FLOOR & BASEMENT



CONSTRUCTED AREAS

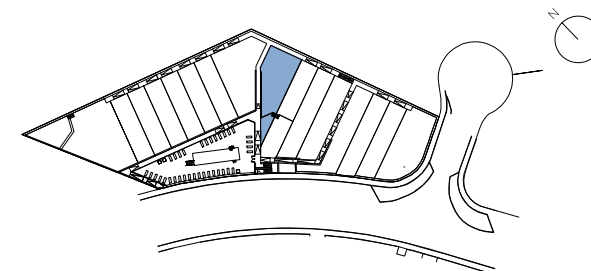
Townhouse area	144,89 m ²
Basement area	59,40 m ²
Solarium area	46,35 m ²
Terrace area	74,00 m ²
Garden area	84,31 m ²

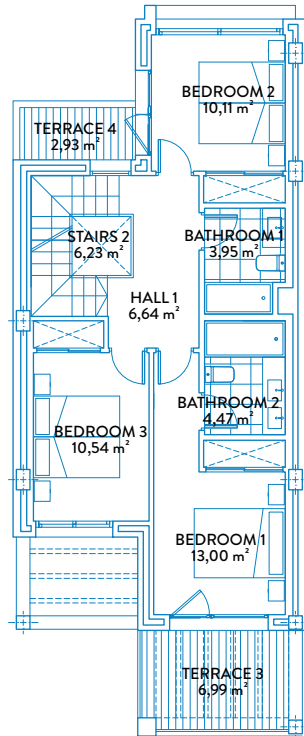
USEFUL AREAS

Townhouse area	112,81 m ²
Basement area	52,47 m ²

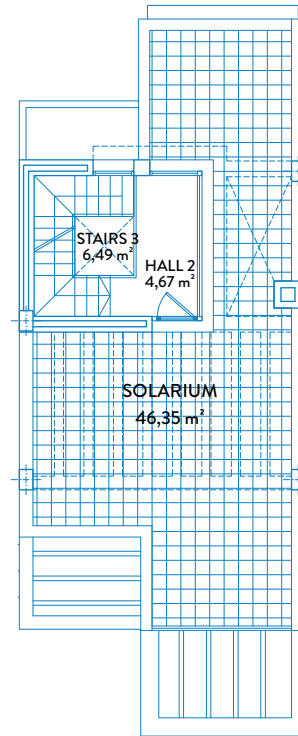
BOJA AREAS

Useful area	124,09 m ²
Constructed area	159,38 m ²

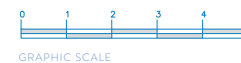




FIRST FLOOR



SOLARIUM



CONSTRUCTED AREAS

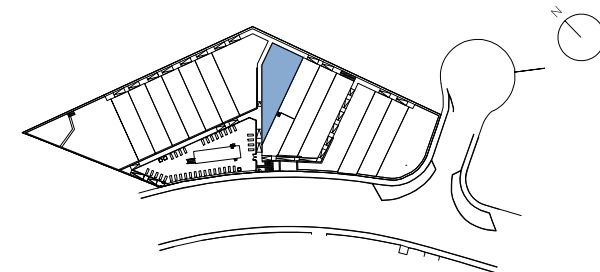
Townhouse area	144,89 m ²
Basement area	59,40 m ²
Solarium area	46,35 m ²
Terrace area	74,00 m ²
Garden area	84,31 m ²

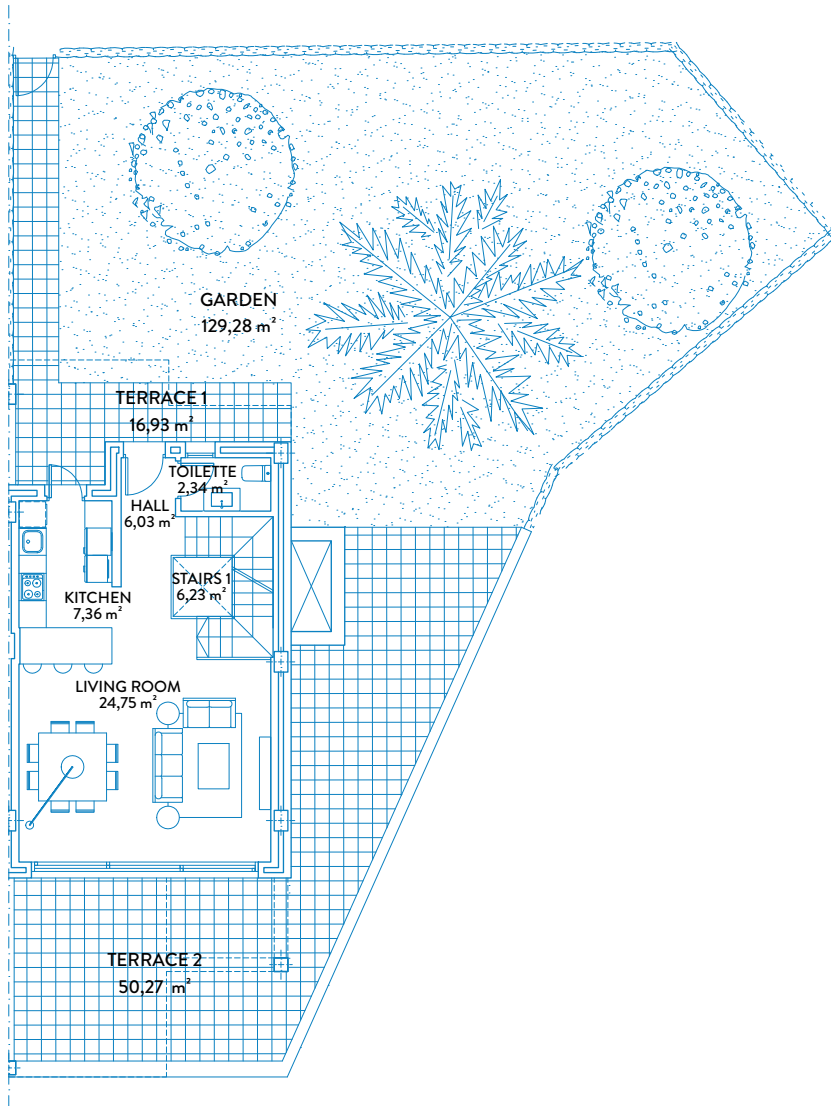
USEFUL AREAS

Townhouse area	112,81 m ²
Basement area	52,47 m ²

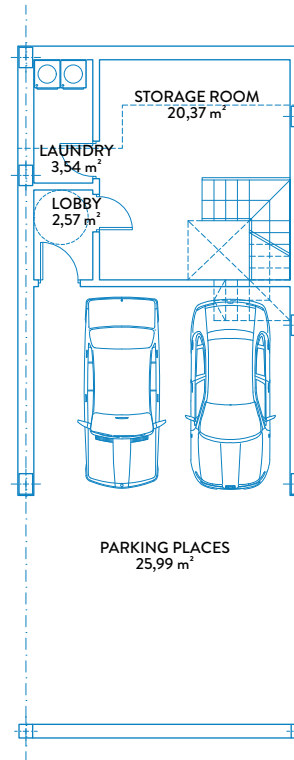
BOJA AREAS

Useful area	124,09 m ²
Constructed area	159,38 m ²

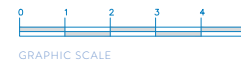




GROUND FLOOR



BASEMENT



CONSTRUCTED AREAS

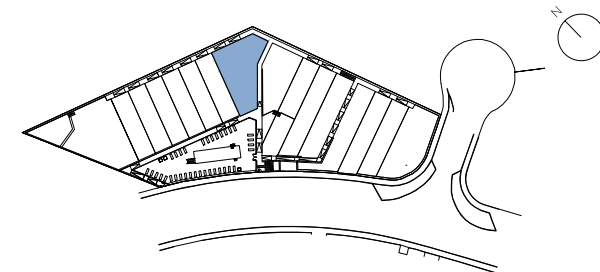
Townhouse area	143,94 m ²
Basement area	59,40 m ²
Solarium area	51,11 m ²
Terrace area	79,16 m ²
Garden area	129,28 m ²

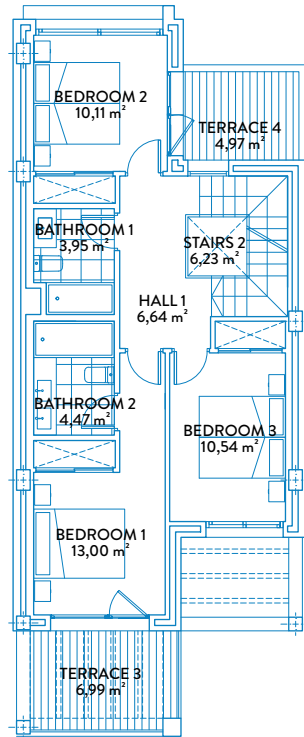
USEFUL AREAS

Townhouse area	112,81 m ²
Basement area	52,47 m ²

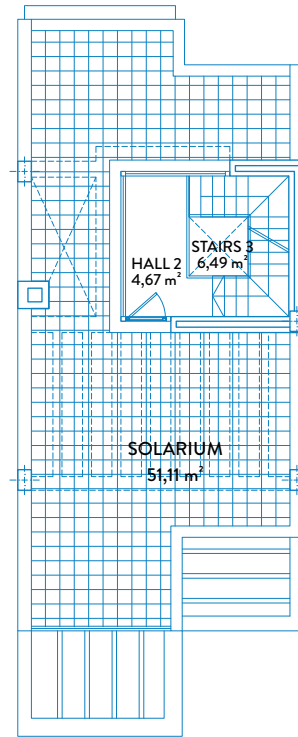
BOJA AREAS

Useful area	124,09 m ²
Constructed area	158,33 m ²





FIRST FLOOR



SOLARIUM



CONSTRUCTED AREAS

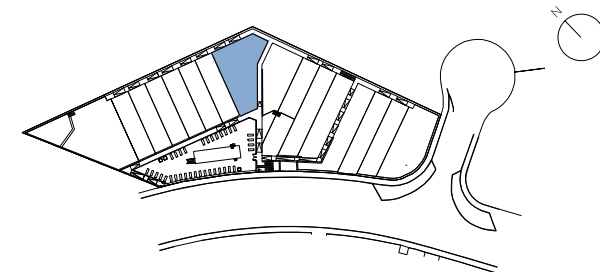
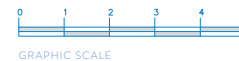
Townhouse area	143,94 m ²
Basement area	59,40 m ²
Solarium area	51,11 m ²
Terrace area	79,16 m ²
Garden area	129,28 m ²

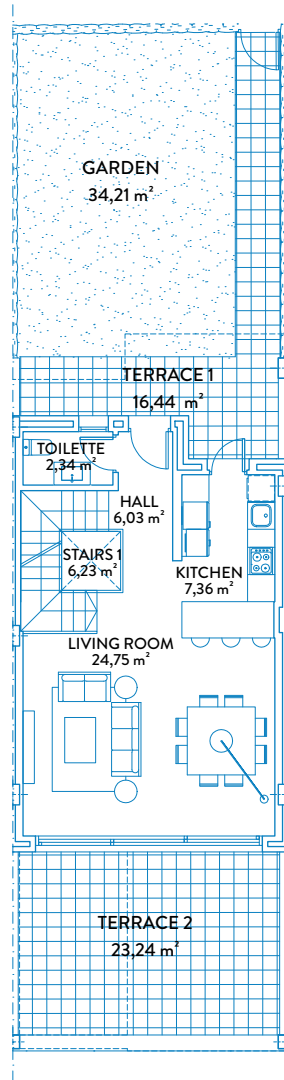
USEFUL AREAS

Townhouse area	112,81 m ²
Basement area	52,47 m ²

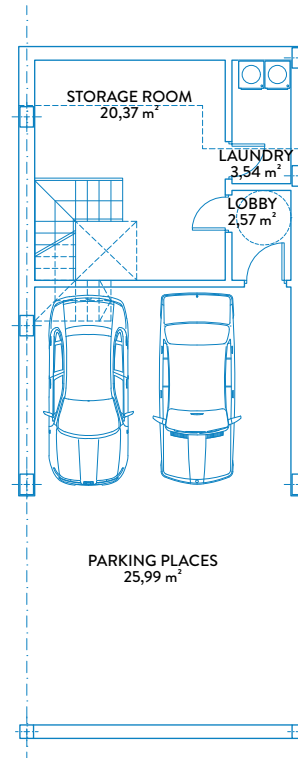
BOJA AREAS

Useful area	124,09 m ²
Constructed area	158,33 m ²

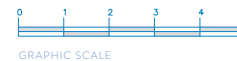




GROUND FLOOR



BASEMENT



CONSTRUCTED AREAS

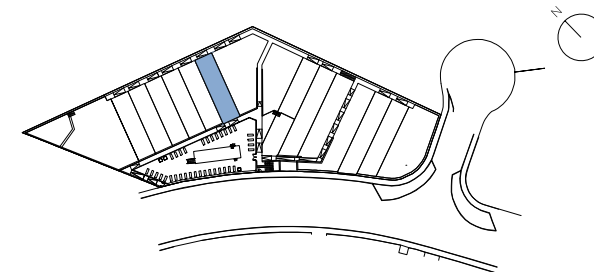
Townhouse area	139,34 m ²
Basement area	59,40 m ²
Solarium area	51,11 m ²
Terrace area	51,64 m ²
Garden area	34,21 m ²

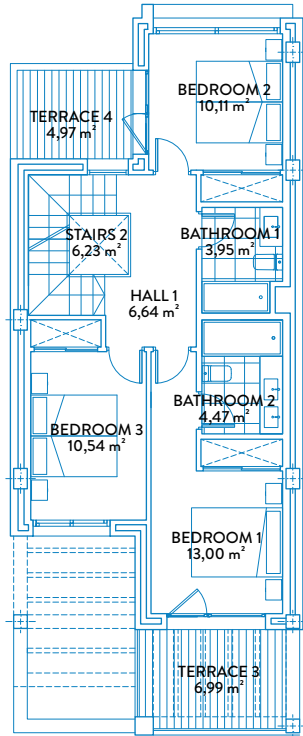
USEFUL AREAS

Townhouse area	112,81 m ²
Basement area	52,47 m ²

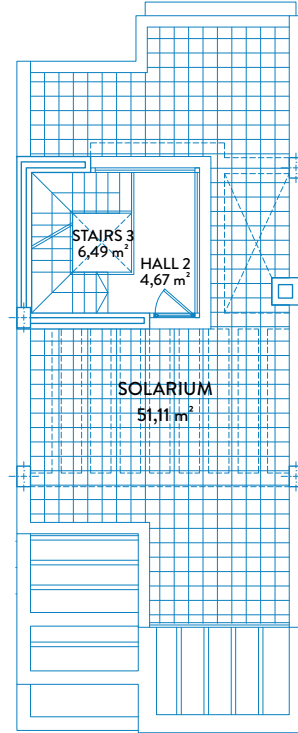
BOJA AREAS

Useful area	124,09 m ²
Constructed area	159,38 m ²





FIRST FLOOR



SOLARIUM



CONSTRUCTED AREAS

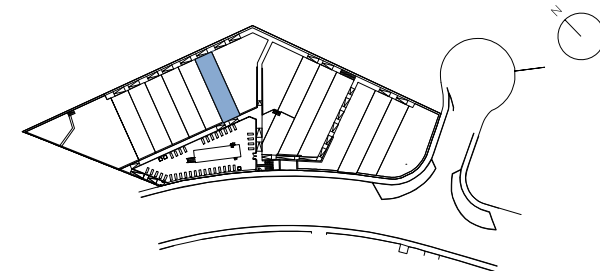
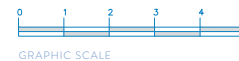
Townhouse area	139,34 m ²
Basement area	59,40 m ²
Solarium area	51,11 m ²
Terrace area	51,64 m ²
Garden area	34,21 m ²

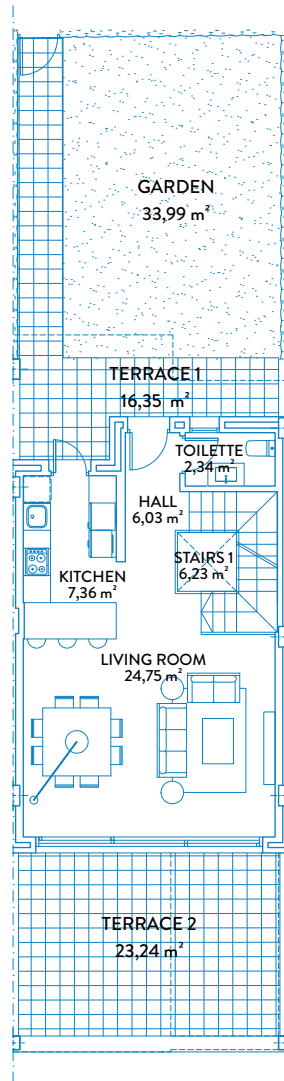
USEFUL AREAS

Townhouse area	112,81 m ²
Basement area	52,47 m ²

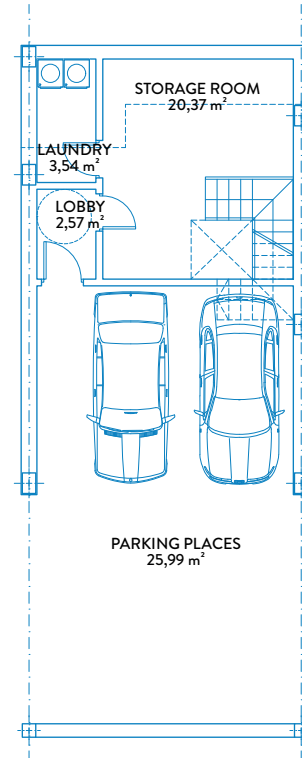
BOJA AREAS

Useful area	124,09 m ²
Constructed area	159,38 m ²

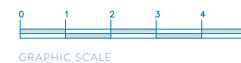




GROUND FLOOR



BASEMENT



CONSTRUCTED AREAS

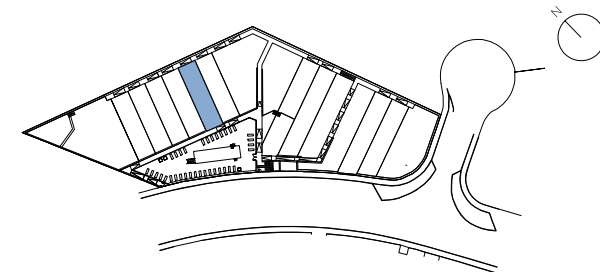
Townhouse area	139,34 m ²
Basement area	59,40 m ²
Solarium area	51,11 m ²
Terrace area	51,55 m ²
Garden area	33,99 m ²

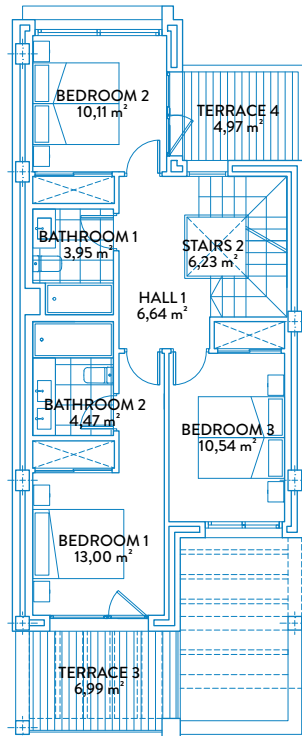
USEFUL AREAS

Townhouse area	112,81 m ²
Basement area	52,47 m ²

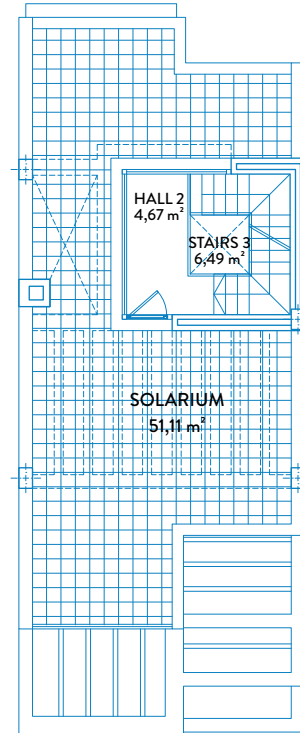
BOJA AREAS

Useful area	124,09 m ²
Constructed area	153,27 m ²





FIRST FLOOR



SOLARIUM



CONSTRUCTED AREAS

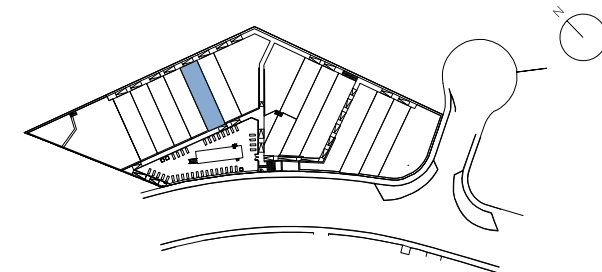
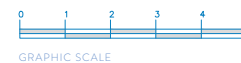
Townhouse area	139,34 m ²
Basement area	59,40 m ²
Solarium area	51,11 m ²
Terrace area	51,55 m ²
Garden area	33,99 m ²

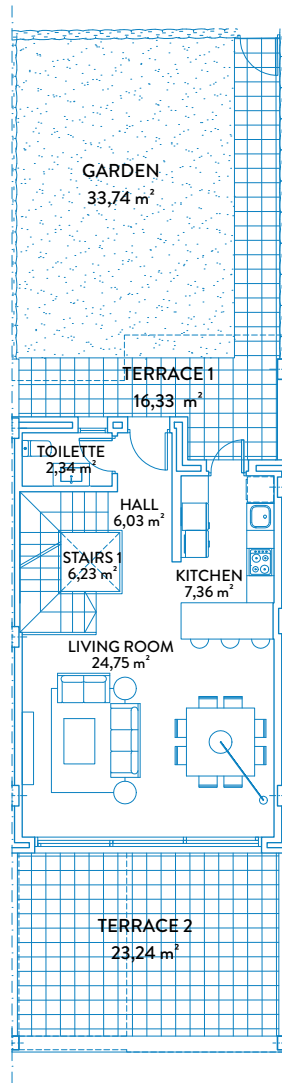
USEFUL AREAS

Townhouse area	112,81 m ²
Basement area	52,47 m ²

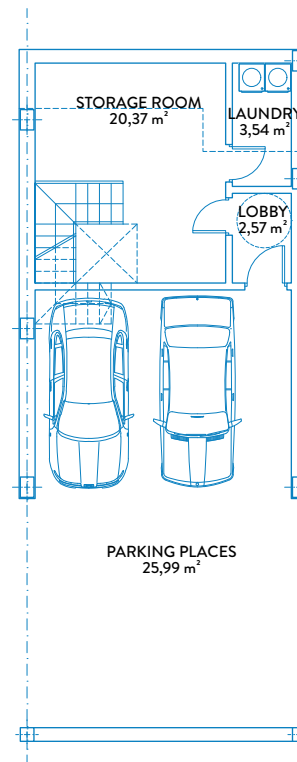
BOJA AREAS

Useful area	124,09 m ²
Constructed area	153,27 m ²

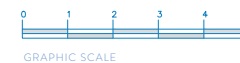




GROUND FLOOR



BASEMENT



CONSTRUCTED AREAS

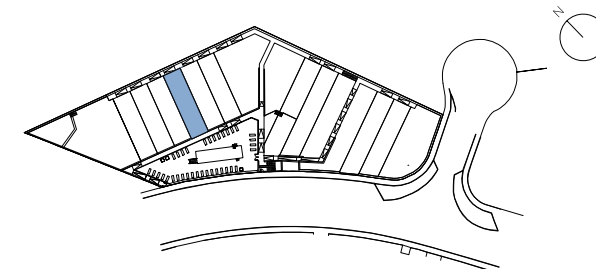
Townhouse area	139,34 m ²
Basement area	59,40 m ²
Solarium area	51,11 m ²
Terrace area	51,53 m ²
Garden area	33,74 m ²

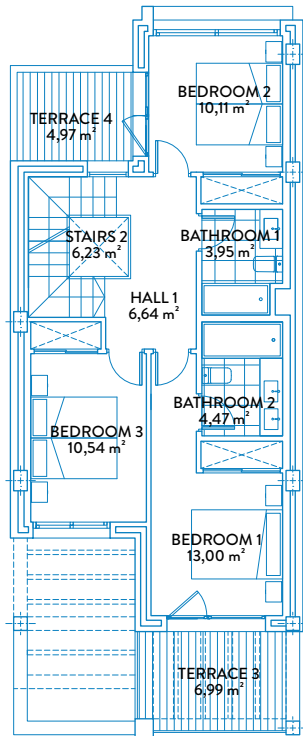
USEFUL AREAS

Townhouse area	112,81 m ²
Basement area	52,47 m ²

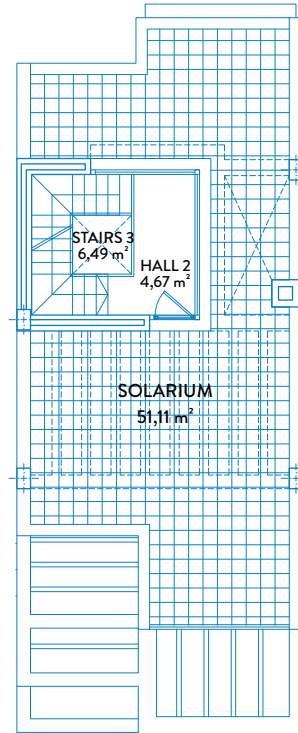
BOJA AREAS

Useful area	124,09 m ²
Constructed area	153,27 m ²

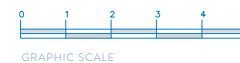




FIRST FLOOR



SOLARIUM



CONSTRUCTED AREAS

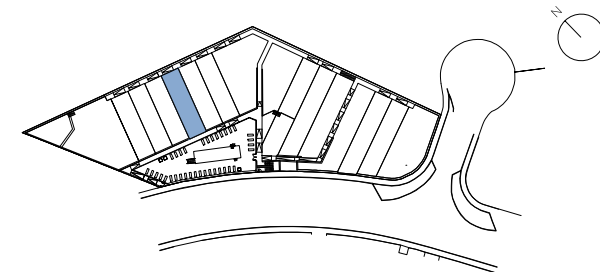
Townhouse area	139,34 m ²
Basement area	59,40 m ²
Solarium area	51,11 m ²
Terrace area	51,53 m ²
Garden area	33,74 m ²

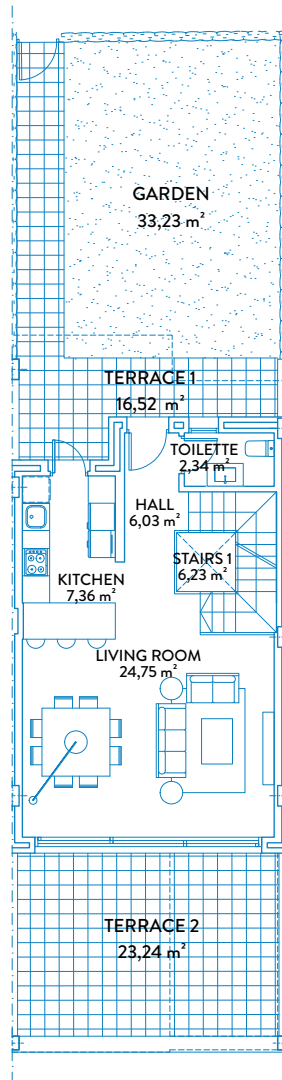
USEFUL AREAS

Townhouse area	112,81 m ²
Basement area	52,47 m ²

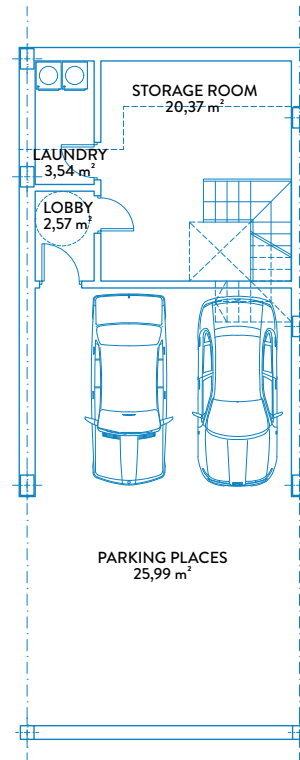
BOJA AREAS

Useful area	124,09 m ²
Constructed area	153,27 m ²

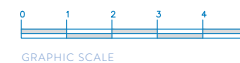




GROUND FLOOR



BASEMENT



CONSTRUCTED AREAS

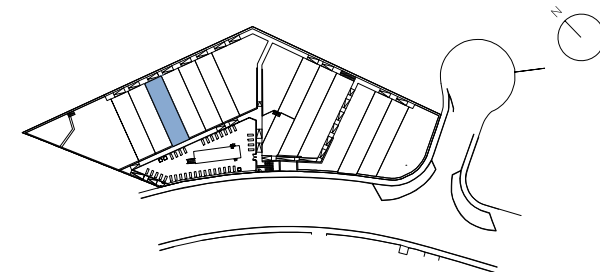
Townhouse area	139,34 m ²
Basement area	59,40 m ²
Solarium area	51,11 m ²
Terrace area	51,72 m ²
Garden area	33,23 m ²

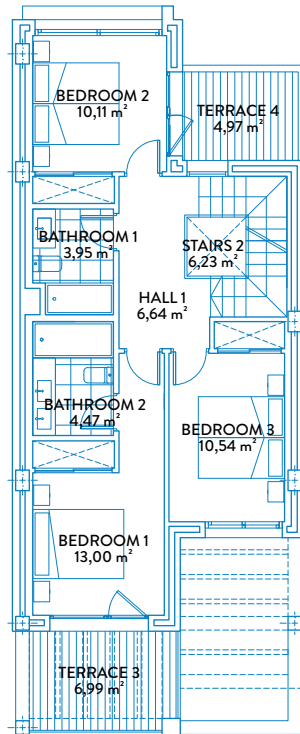
USEFUL AREAS

Townhouse area	112,81 m ²
Basement area	52,47 m ²

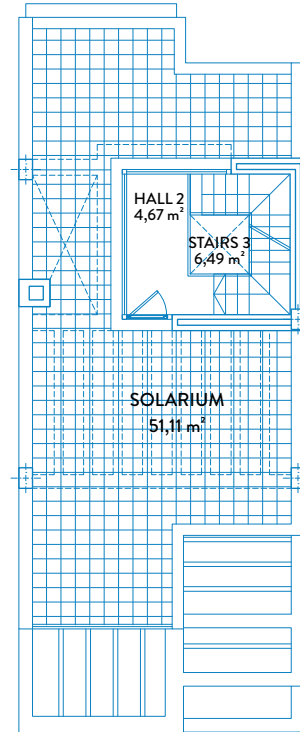
BOJA AREAS

Useful area	124,09 m ²
Constructed area	153,27 m ²





FIRST FLOOR



SOLARIUM



CONSTRUCTED AREAS

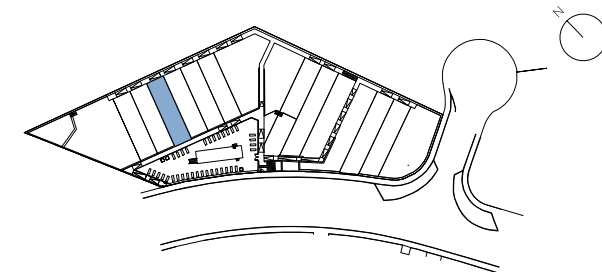
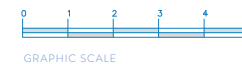
Townhouse area	139,34 m ²
Basement area	59,40 m ²
Solarium area	51,11 m ²
Terrace area	51,72 m ²
Garden area	33,23 m ²

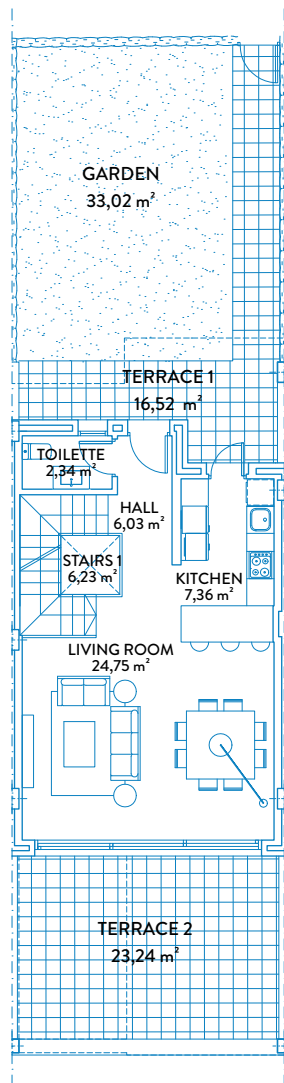
USEFUL AREAS

Townhouse area	112,81 m ²
Basement area	52,47 m ²

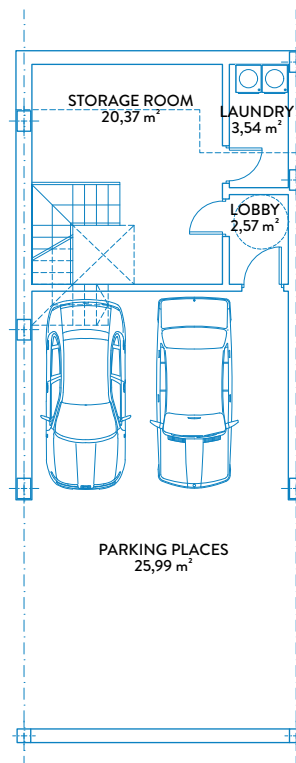
BOJA AREAS

Useful area	124,09 m ²
Constructed area	153,27 m ²

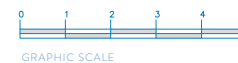




GROUND FLOOR



BASEMENT



CONSTRUCTED AREAS

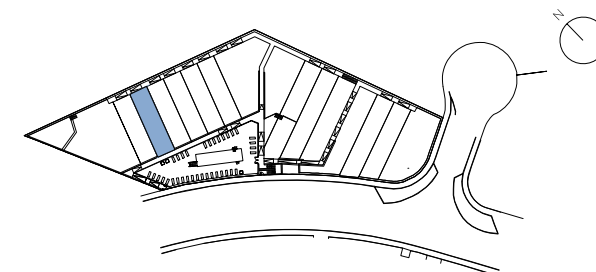
Townhouse area	139,34 m ²
Basement area	59,40 m ²
Solarium area	51,11 m ²
Terrace area	51,72 m ²
Garden area	33,02 m ²

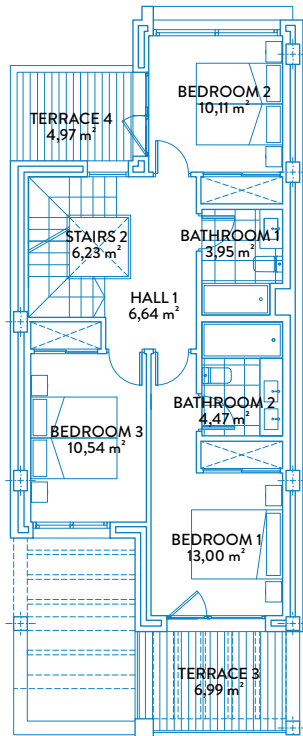
USEFUL AREAS

Townhouse area	112,81 m ²
Basement area	52,47 m ²

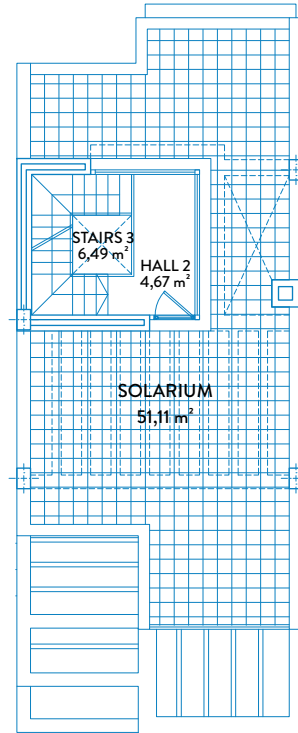
BOJA AREAS

Useful area	124,09 m ²
Constructed area	153,27 m ²





FIRST FLOOR



SOLARIUM



CONSTRUCTED AREAS

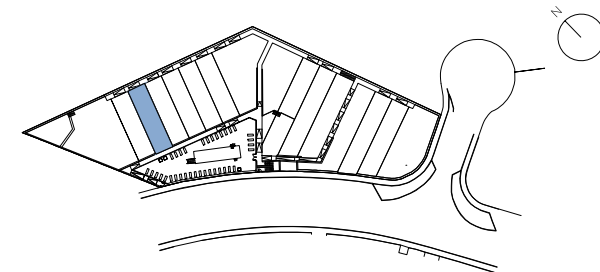
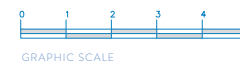
Townhouse area	139,34 m ²
Basement area	59,40 m ²
Solarium area	51,11 m ²
Terrace area	51,72 m ²
Garden area	33,02 m ²

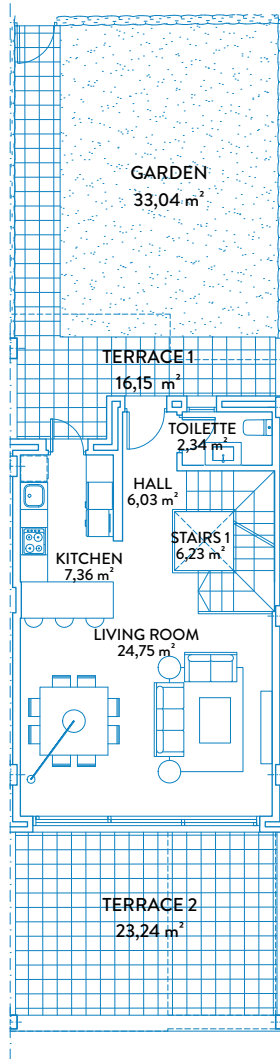
USEFUL AREAS

Townhouse area	112,81 m ²
Basement area	52,47 m ²

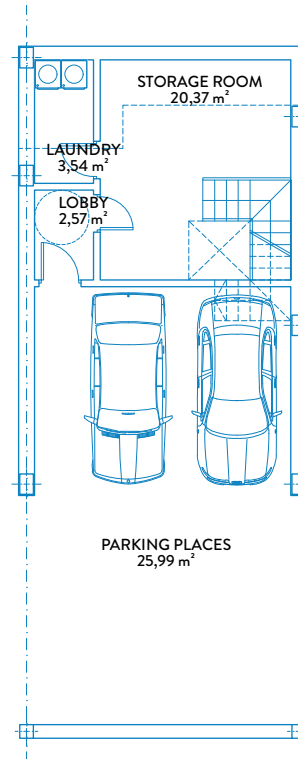
BOJA AREAS

Useful area	124,09 m ²
Constructed area	153,27 m ²

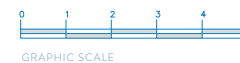




GROUND FLOOR



BASEMENT



CONSTRUCTED AREAS

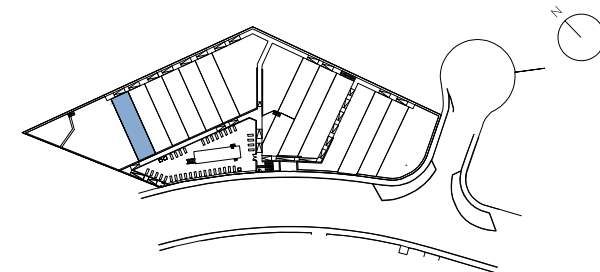
Townhouse area	139,34 m ²
Basement area	59,40 m ²
Solarium area	51,11 m ²
Terrace area	51,35 m ²
Garden area	33,04 m ²

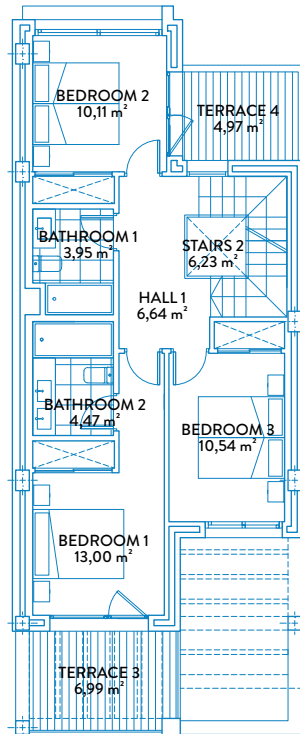
USEFUL AREAS

Townhouse area	112,81 m ²
Basement area	52,47 m ²

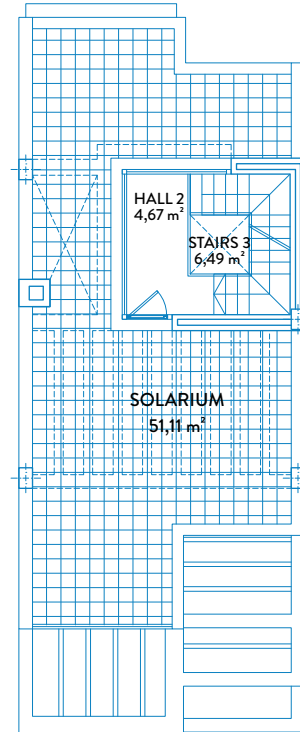
BOJA AREAS

Useful area	124,09 m ²
Constructed area	153,27 m ²

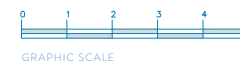




FIRST FLOOR



SOLARIUM



CONSTRUCTED AREAS

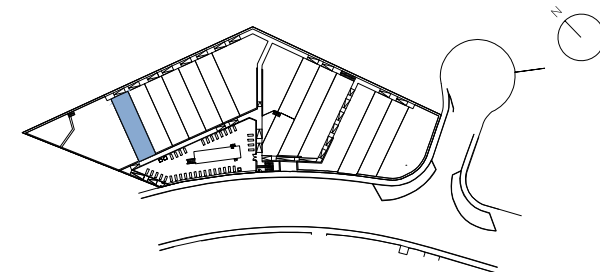
Townhouse area	139,34 m ²
Basement area	59,40 m ²
Solarium area	51,11 m ²
Terrace area	51,35 m ²
Garden area	33,04 m ²

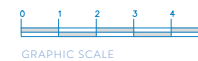
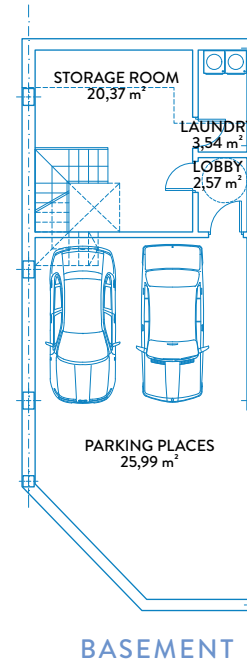
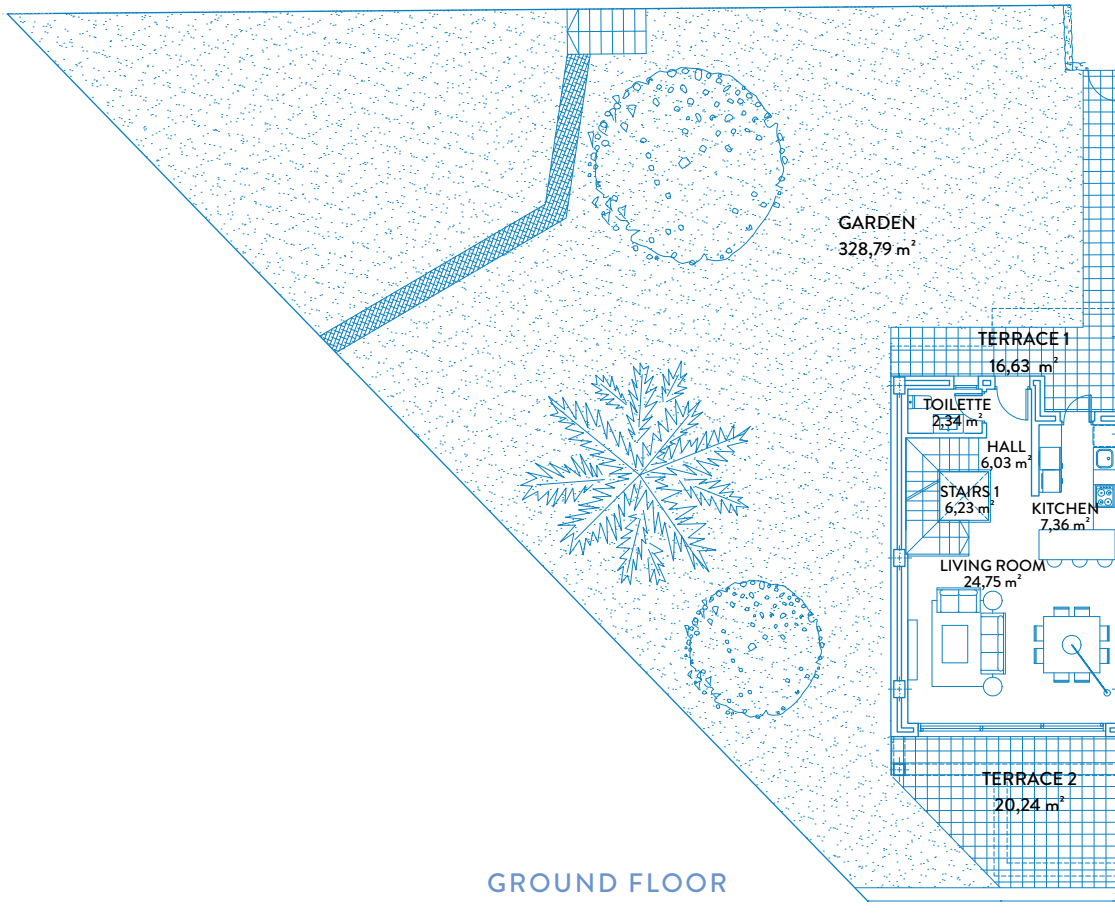
USEFUL AREAS

Townhouse area	112,81 m ²
Basement area	52,47 m ²

BOJA AREAS

Useful area	124,09 m ²
Constructed area	153,27 m ²





CONSTRUCTED AREAS

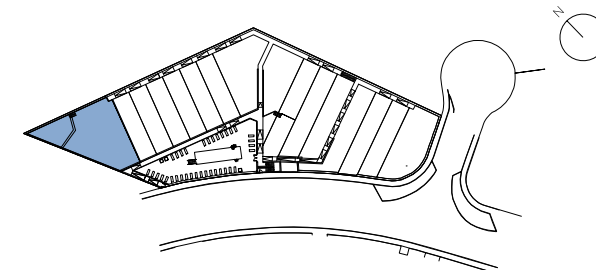
Townhouse area	143,94 m ²
Basement area	59,40 m ²
Solarium area	51,11 m ²
Terrace area	46,68 m ²
Garden area	328,79 m ²

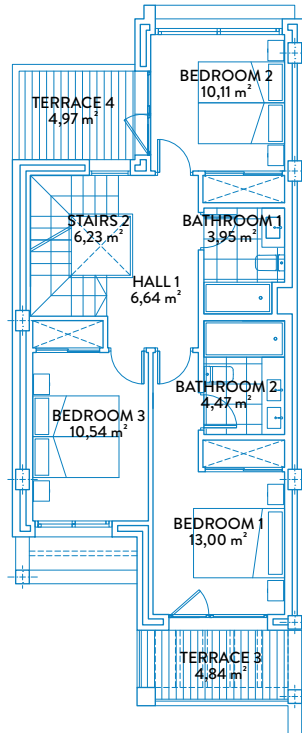
USEFUL AREAS

Townhouse area	112,81 m ²
Basement area	52,47 m ²

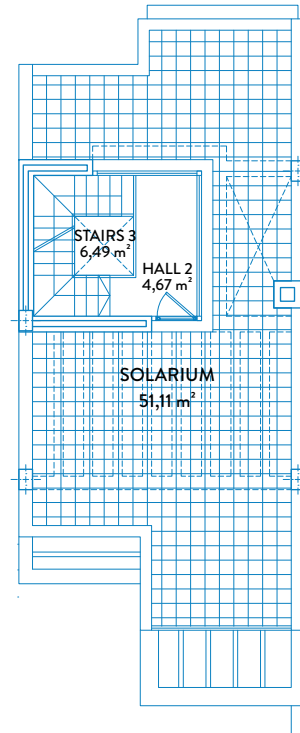
BOJA AREAS

Useful area	124,09 m ²
Constructed area	158,33 m ²





FIRST FLOOR



SOLARIUM



CONSTRUCTED AREAS

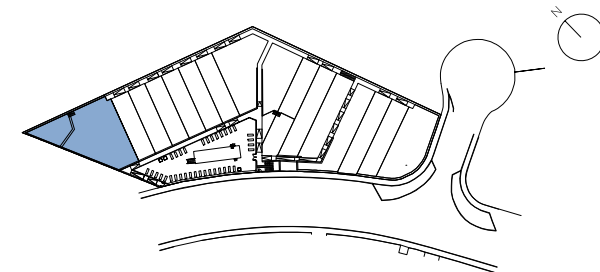
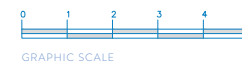
Townhouse area	143,94 m ²
Basement area	59,40 m ²
Solarium area	51,11 m ²
Terrace area	46,68 m ²
Garden area	328,79 m ²

USEFUL AREAS

Townhouse area	112,81 m ²
Basement area	52,47 m ²

BOJA AREAS

Useful area	124,09 m ²
Constructed area	158,33 m ²





Information and graphic material are purely informative and have no contractual value. They may be subject to changes due to technical or legal requirements or by initiative of the Project Management team. Gardening, decoration and furniture are for the purpose of decoration and are non-binding. The remaining information referring to the Royal Decree 218/2005 from the Andalusian Government is available in our offices.