



— FLOOR PLAN —

GF

GROUND FLOOR



FF

FIRST FLOOR



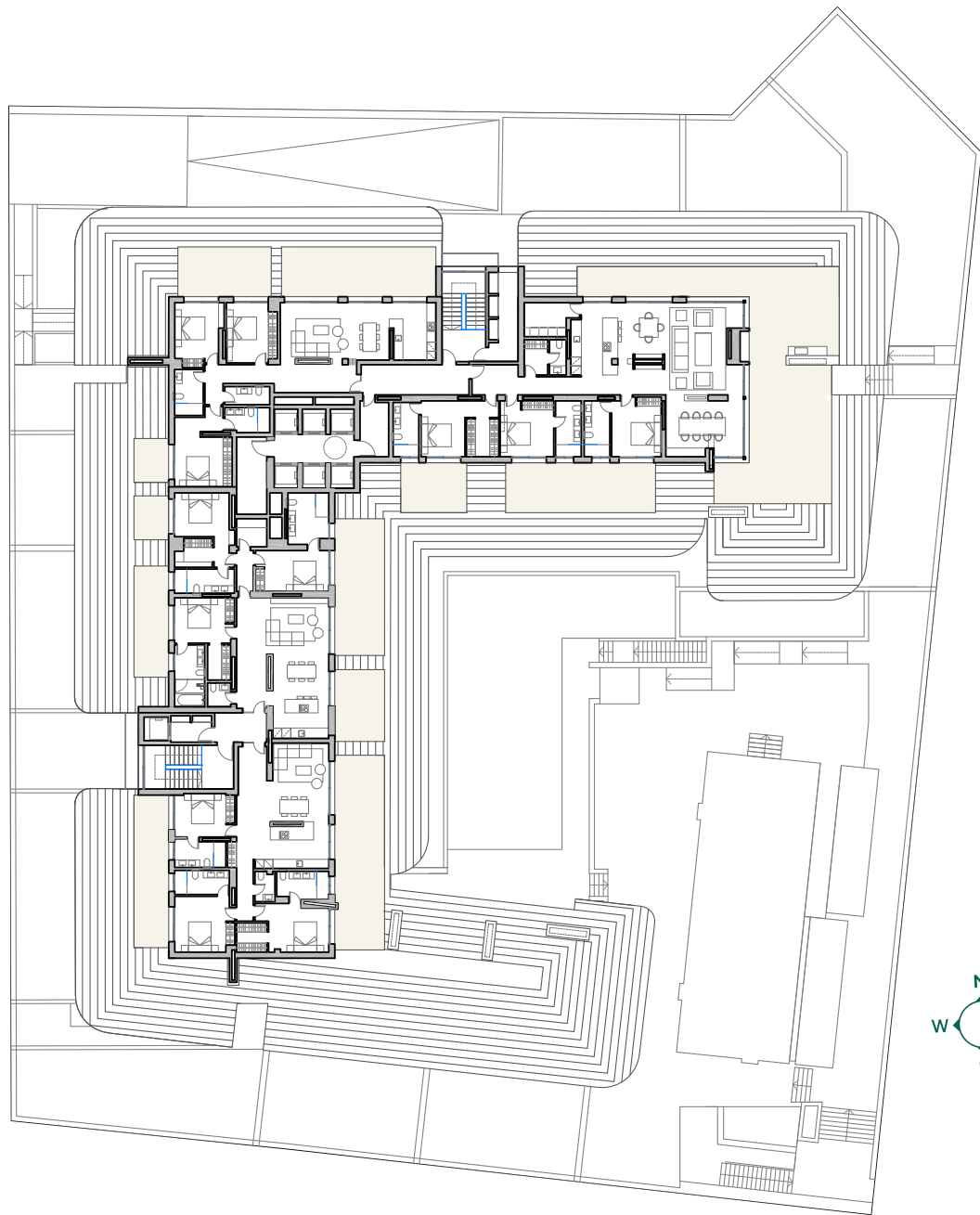
TF

TYPE FLOOR



P

PENTHOUSES



FB

FIRST BASEMENT



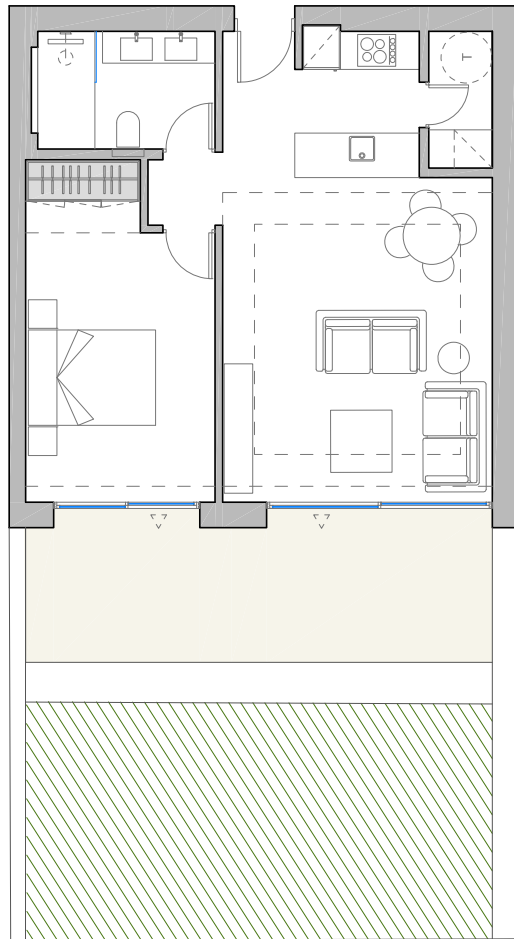
SB

SECOND BASEMENT



TYPE

APARTMENT TYPE | L



Bedrooms

1

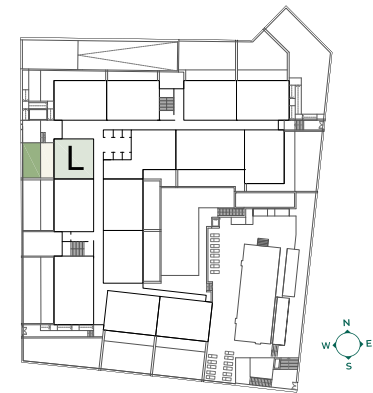
**Total useful
area BOJA**
57,32 m²

**Total built
area BOJA**
80,34 m²

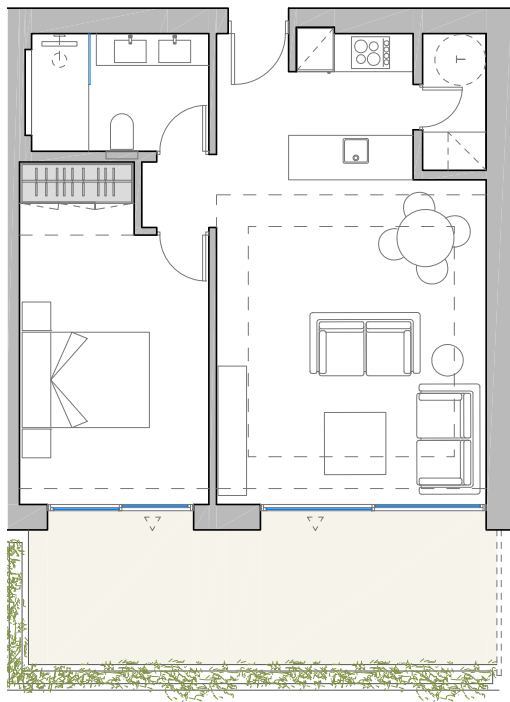
**Built
Terrace**
21,95 m²

Garden
27,29 m²

GROUND FLOOR



APARTMENT TYPE | L



Bedrooms

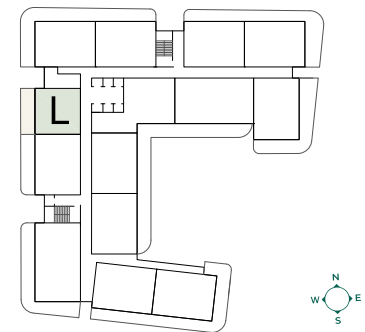
1

Total useful
area BOJA
57,32 m²

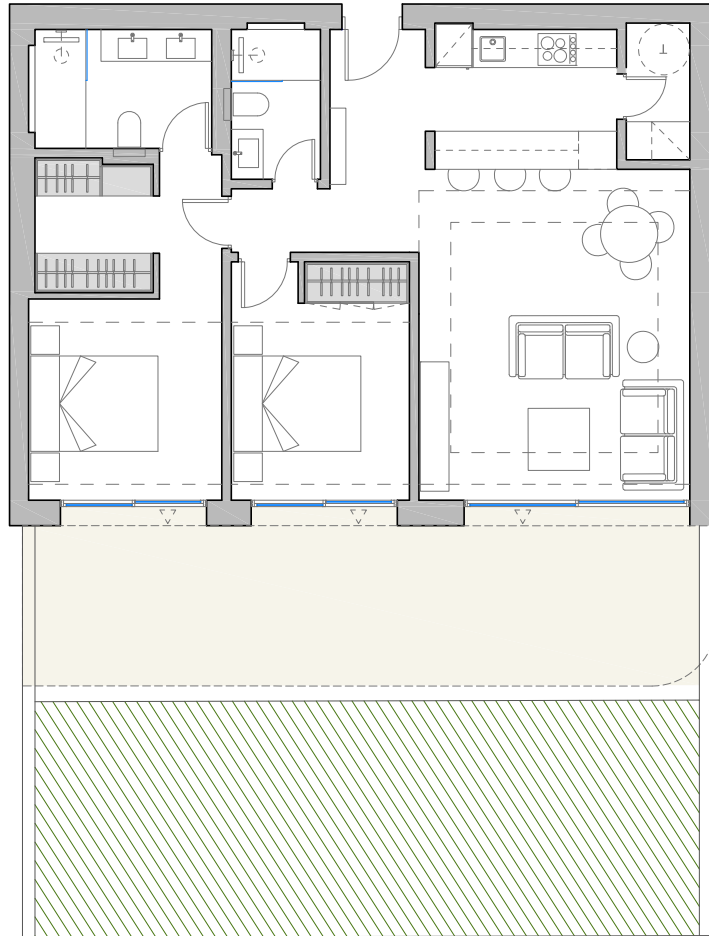
Total built
area BOJA
80,34 m²

Built
Terrace
17,37 m²

FIRST FLOOR



APARTMENT TYPE | J-I-M-D-C-B-A-H



Bedrooms

2

Total useful
area BOJA

79,64 m²

Total built
area BOJA

112,29 m²

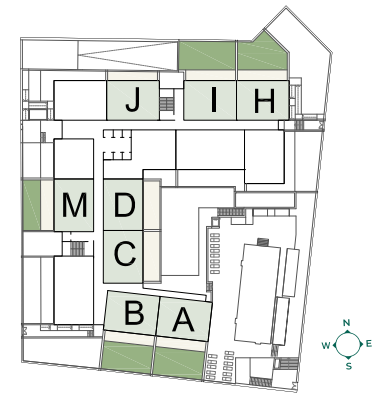
Built

desde 22,83
hasta 38,51 m²

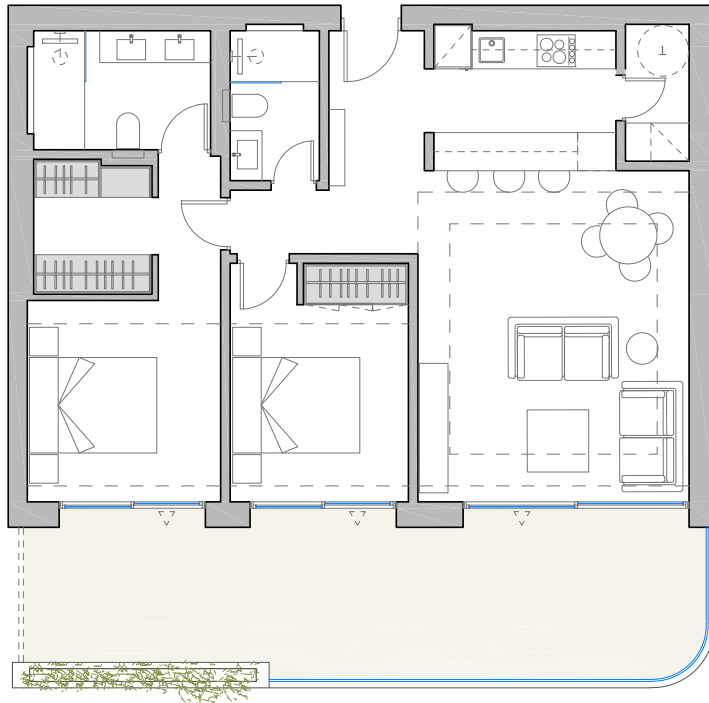
Garden
(up to)

69,21 m²

GROUND FLOOR



APARTMENT TYPE | J-I-L-M-D-C-B



Bedrooms

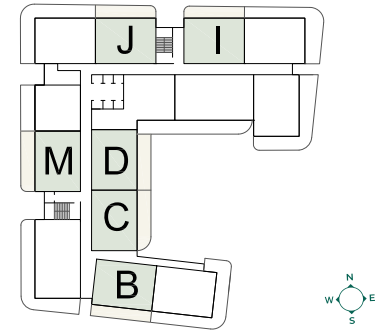
2

Total useful
area BOJA
79,64 m²

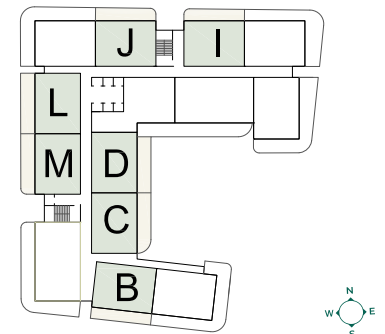
Total built
area BOJA
112,29 m²

Built
Terrace
desde 17,37
hasta 28,02 m²

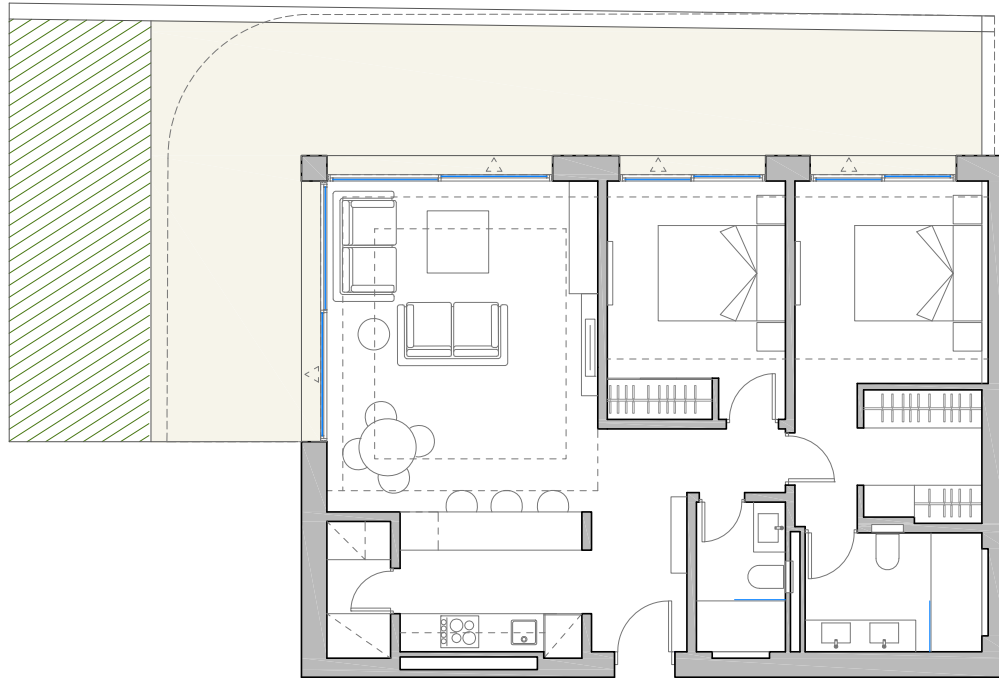
FIRST FLOOR



TYPE FLOOR [2-7]



APARTMENT TYPE | K



Bedrooms

2

Total useful
area BOJA

79,64 m²

Total built
area BOJA

112,29 m²

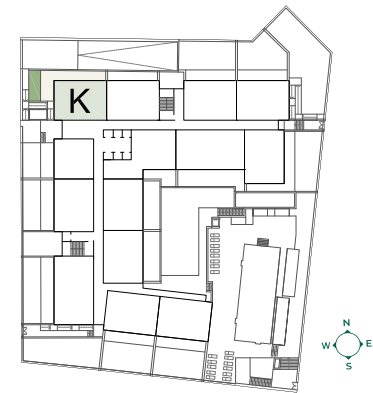
Built
Terrace

41 m²

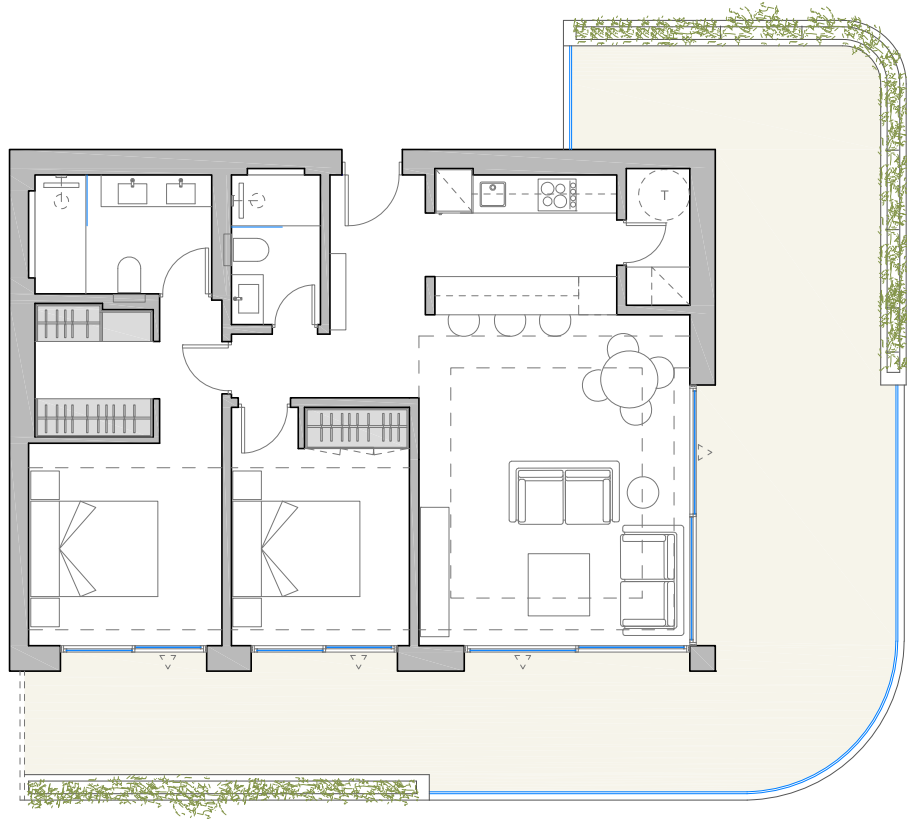
Garden

62,62 m²

GROUND FLOOR



APARTMENT TYPE | K-H-A



Bedrooms

2

Total useful
area BOJA

79,64 m²

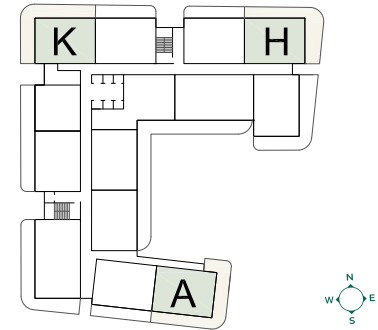
Total built
area BOJA

112,29 m²

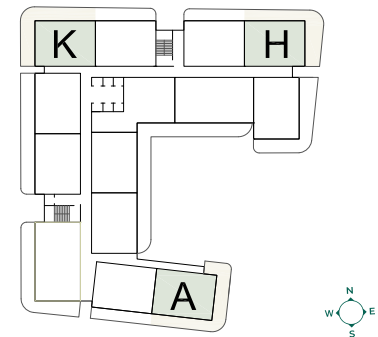
Built
Terrace

desde 44,82
hasta 58,32 m²

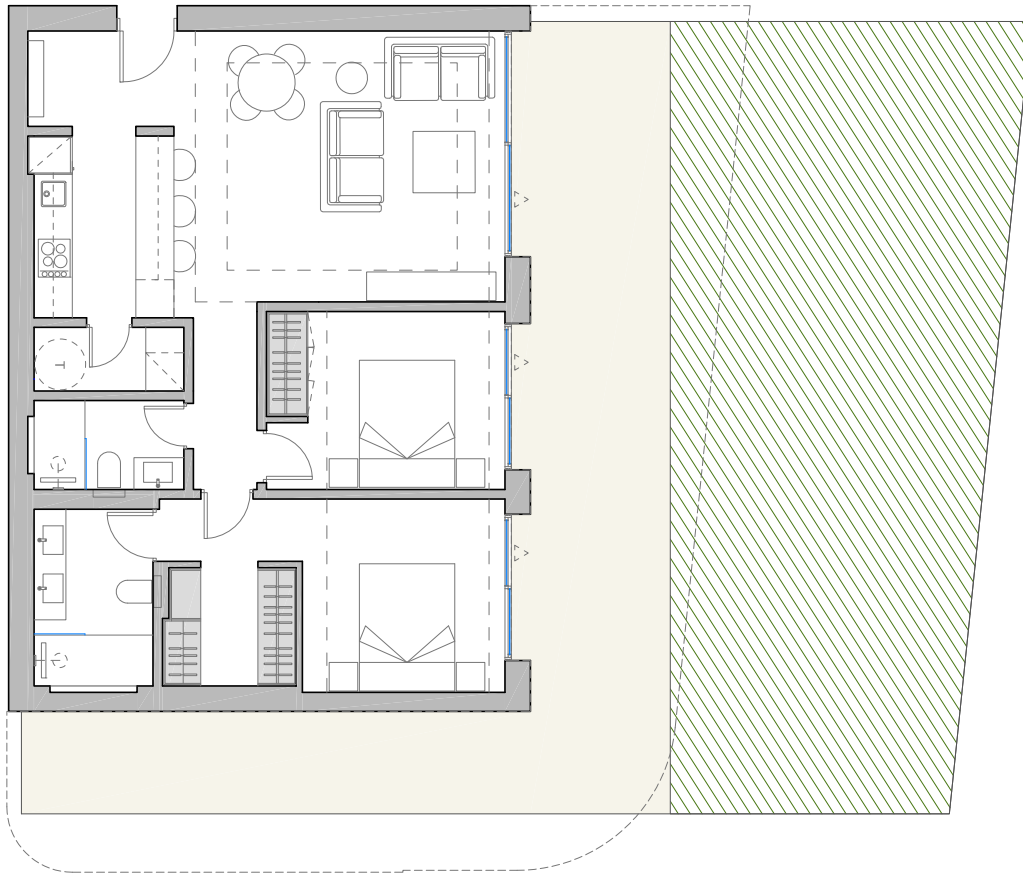
FIRST FLOOR



TYPE FLOOR [2-7]



APARTMENT TYPE | G



Bedrooms

2

**Total useful
area BOJA**

79,64 m²

**Total built
area BOJA**

112,29 m²

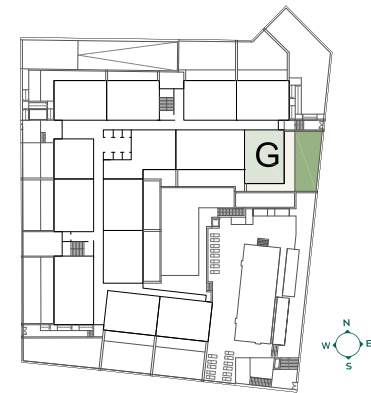
**Built
Terrace**

42,76 m²

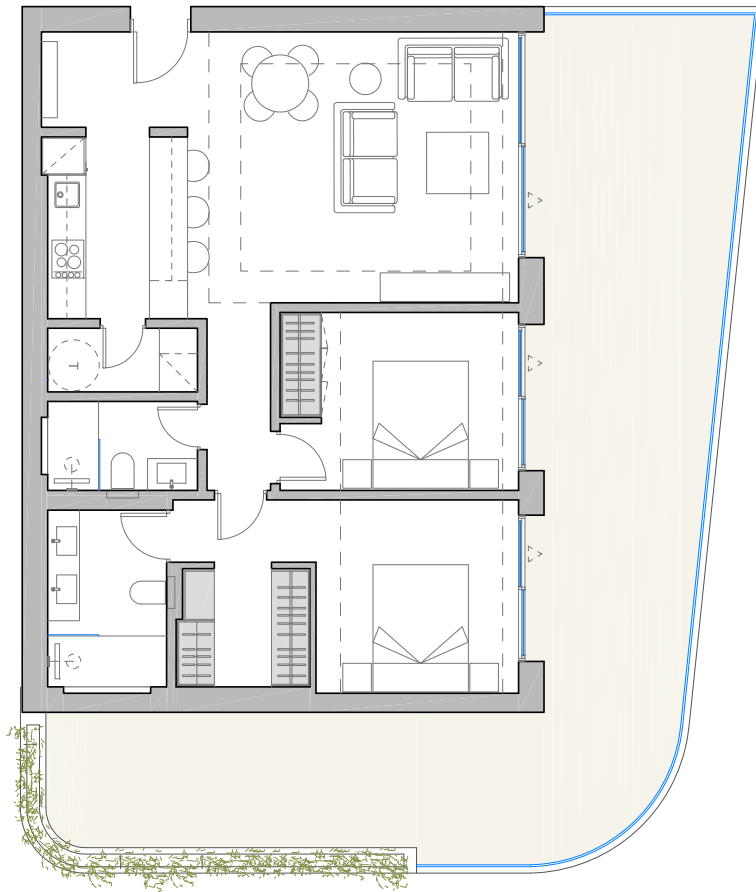
Garden

62,75 m²

GROUND FLOOR



APARTMENT TYPE | G



Bedrooms

2

Total useful
area BOJA

79,64 m²

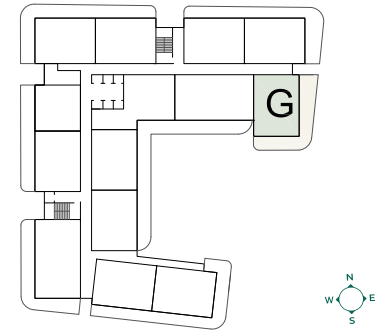
Total built
area BOJA

112,29 m²

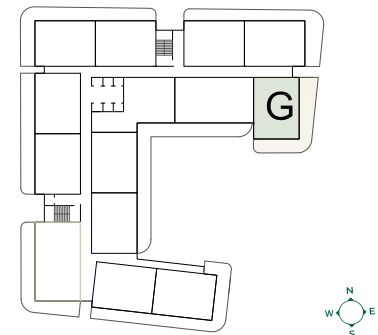
Built
Terrace

55,74 m²

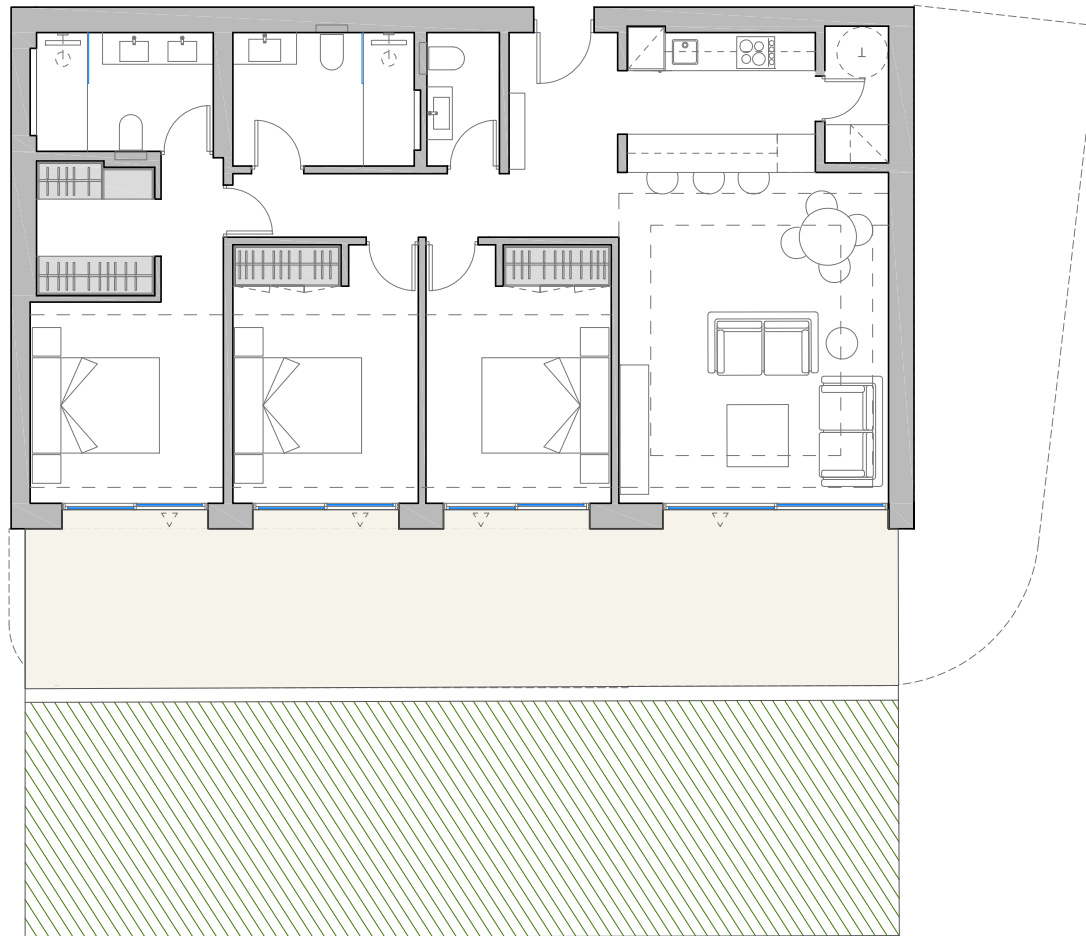
FIRST FLOOR



TYPE FLOOR [2-7]



APARTMENT TYPE | N



Bedrooms

3

Total useful
area BOJA

103,12 m²

Total built
area BOJA

146,27 m²

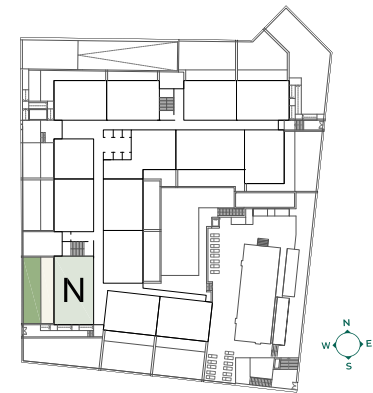
Built
Terrace

37,36 m²

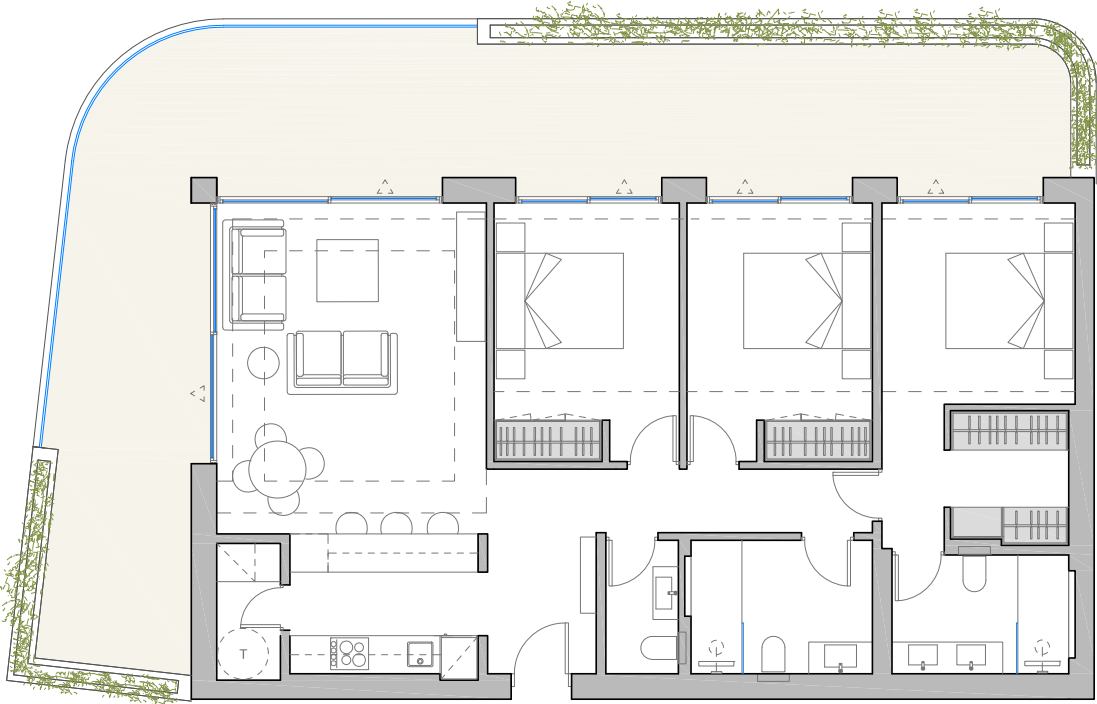
Garden

50,87 m²

GROUND FLOOR



APARTMENT TYPE | N



Bedrooms

3

Total useful
area BOJA

103,12 m²

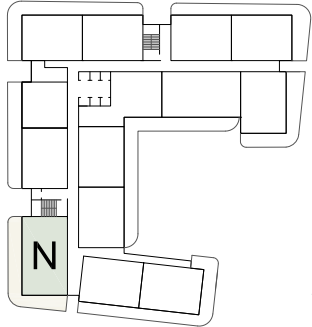
Total built
area BOJA

146,27 m²

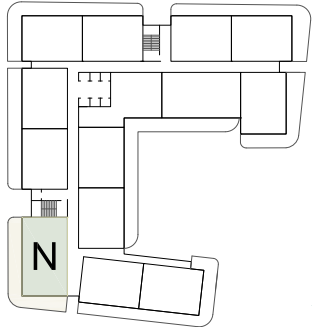
Built
Terrace

55,6 m²

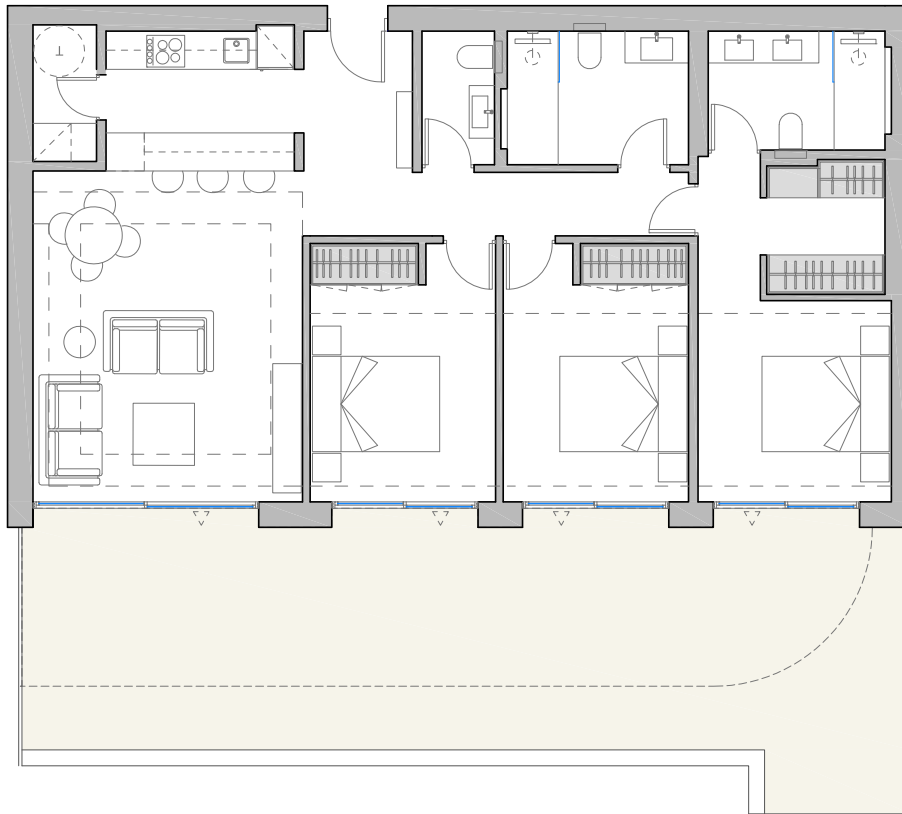
FIRST FLOOR



TYPE FLOOR [2-7]



APARTMENT TYPE | **F**



Bedrooms

3

**Total useful
area BOJA**

103,12 m²

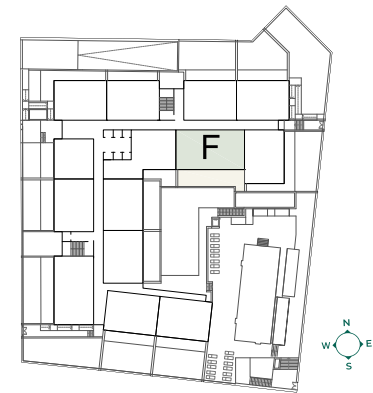
**Total built
area BOJA**

146,27 m²

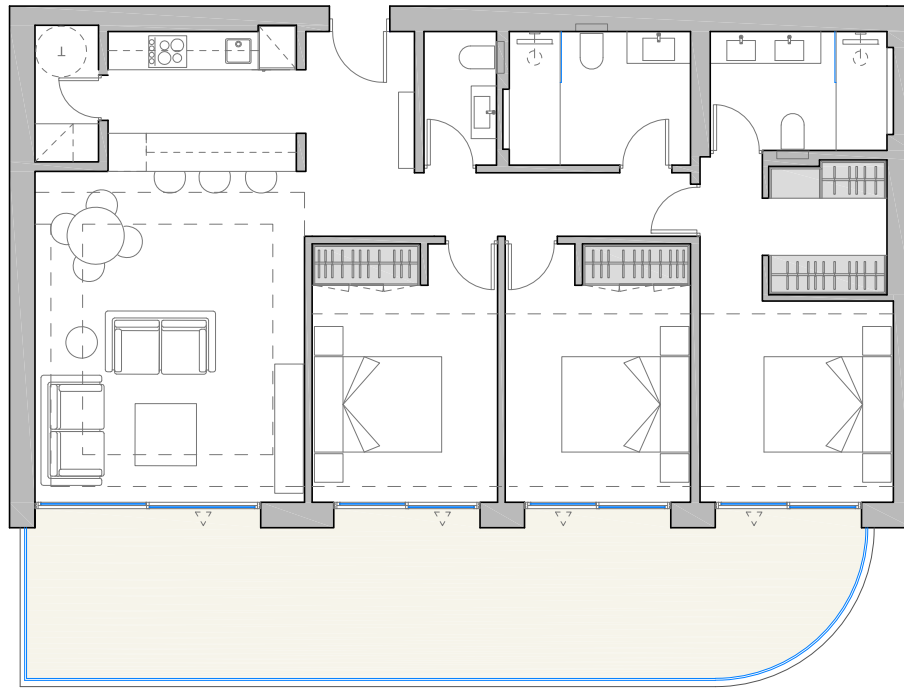
**Built
Terrace**

54,34 m²

GROUND FLOOR



APARTMENT TYPE | **F**



Bedrooms

3

**Total useful
area BOJA**

103,12 m²

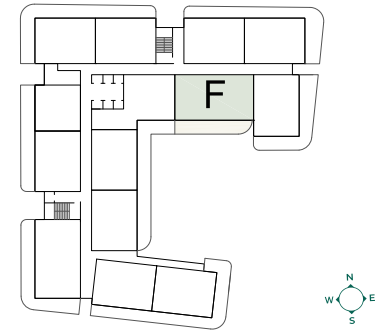
**Total built
area BOJA**

146,27 m²

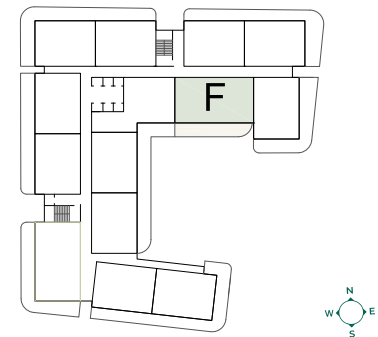
**Built
Terrace**

34,47 m²

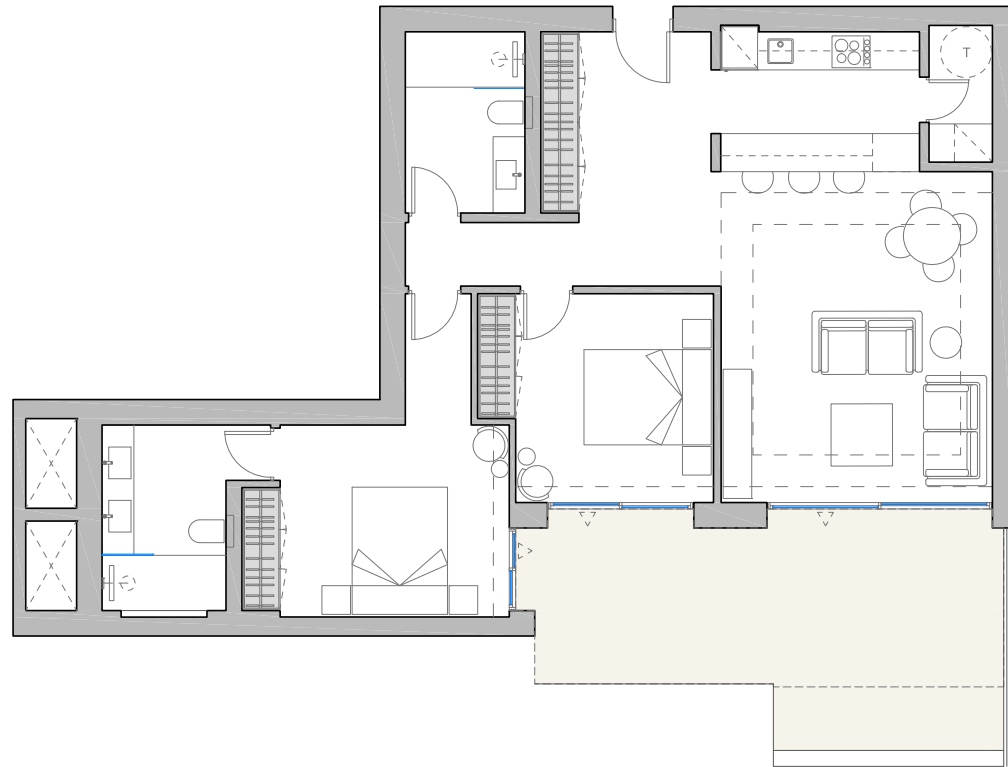
FIRST FLOOR



TYPE FLOOR [2-7]



APARTMENT TYPE | E



Bedrooms

2

Total useful
area BOJA

89,90 m²

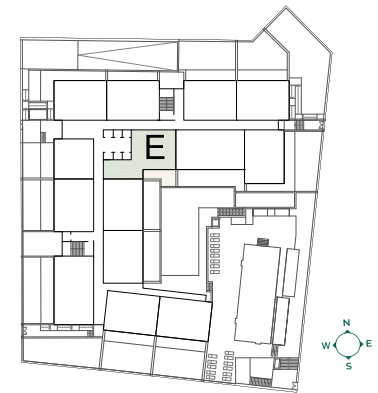
Total built
area BOJA

130,83 m²

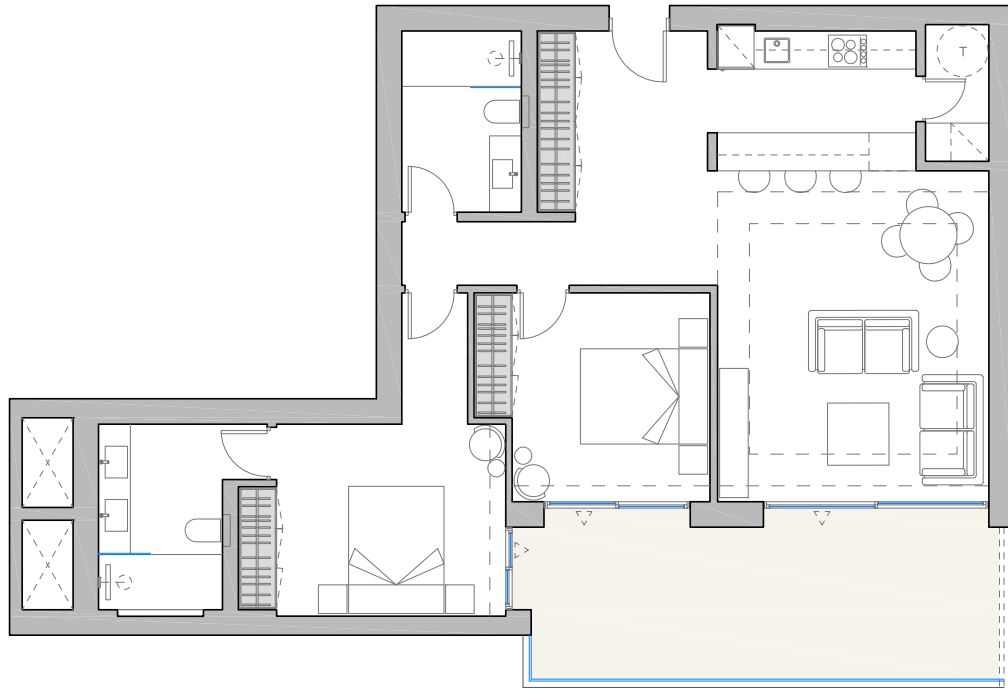
Built
Terrace

24,02 m²

GROUND FLOOR



APARTMENT TYPE | E



Bedrooms

2

Total useful
area BOJA

89,90 m²

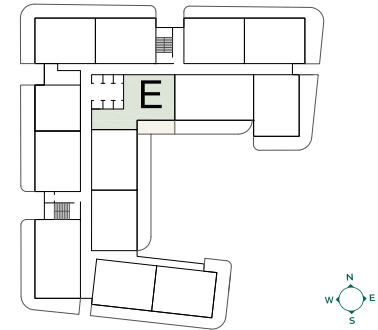
Total built
area BOJA

130,83 m²

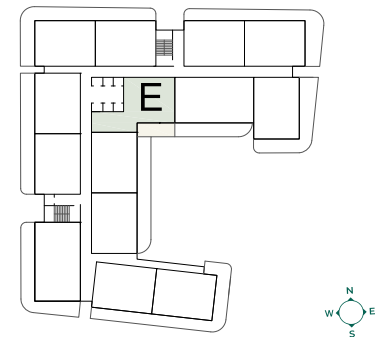
Built
Terrace

20,19 m²

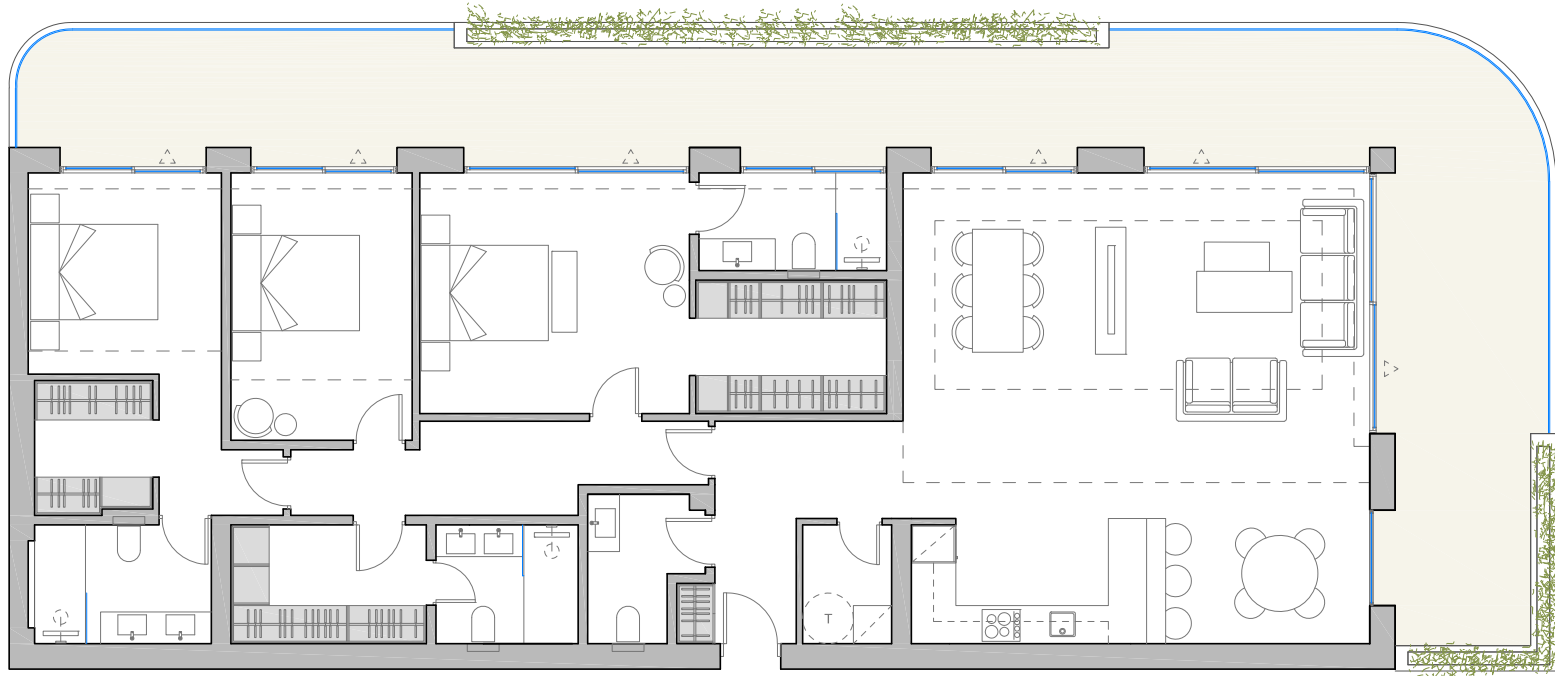
FIRST FLOOR



TYPE FLOOR [2-7]



APARTMENT TYPE | ○



Bedrooms

3

Total useful
area BOJA

162,32 m²

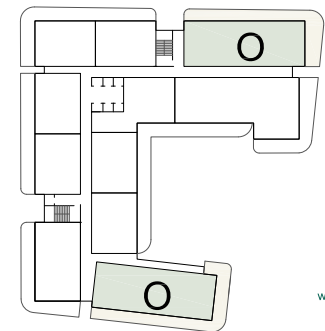
Total built
area BOJA

223,34 m²

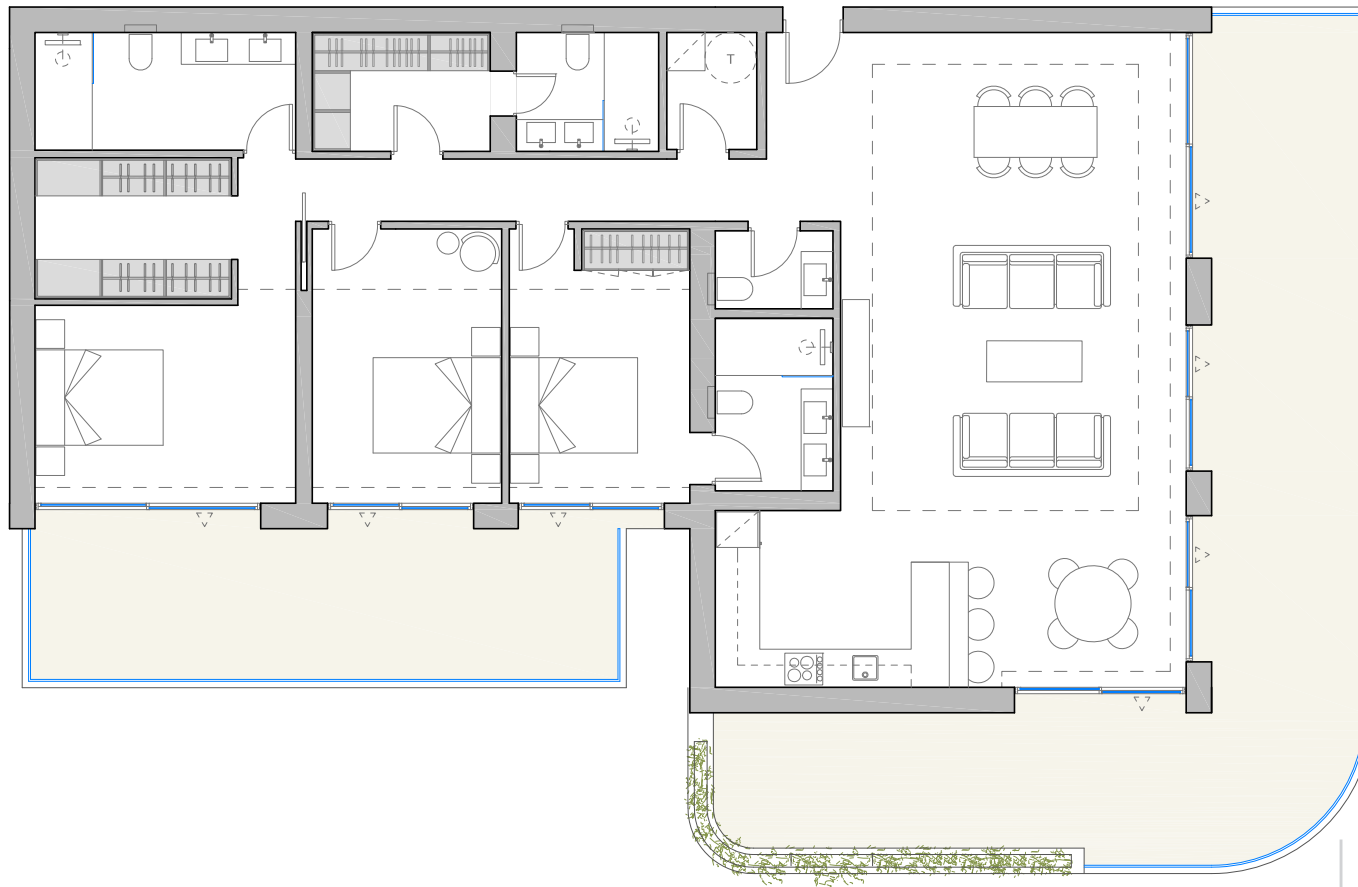
Built
Terrace

67,14 m²

TYPE FLOOR [2-7]



APARTMENT TYPE | P



Bedrooms

3

Total useful
area BOJA

161,93 m²

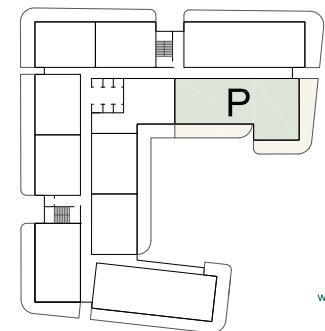
Total built
area BOJA

222,93 m²

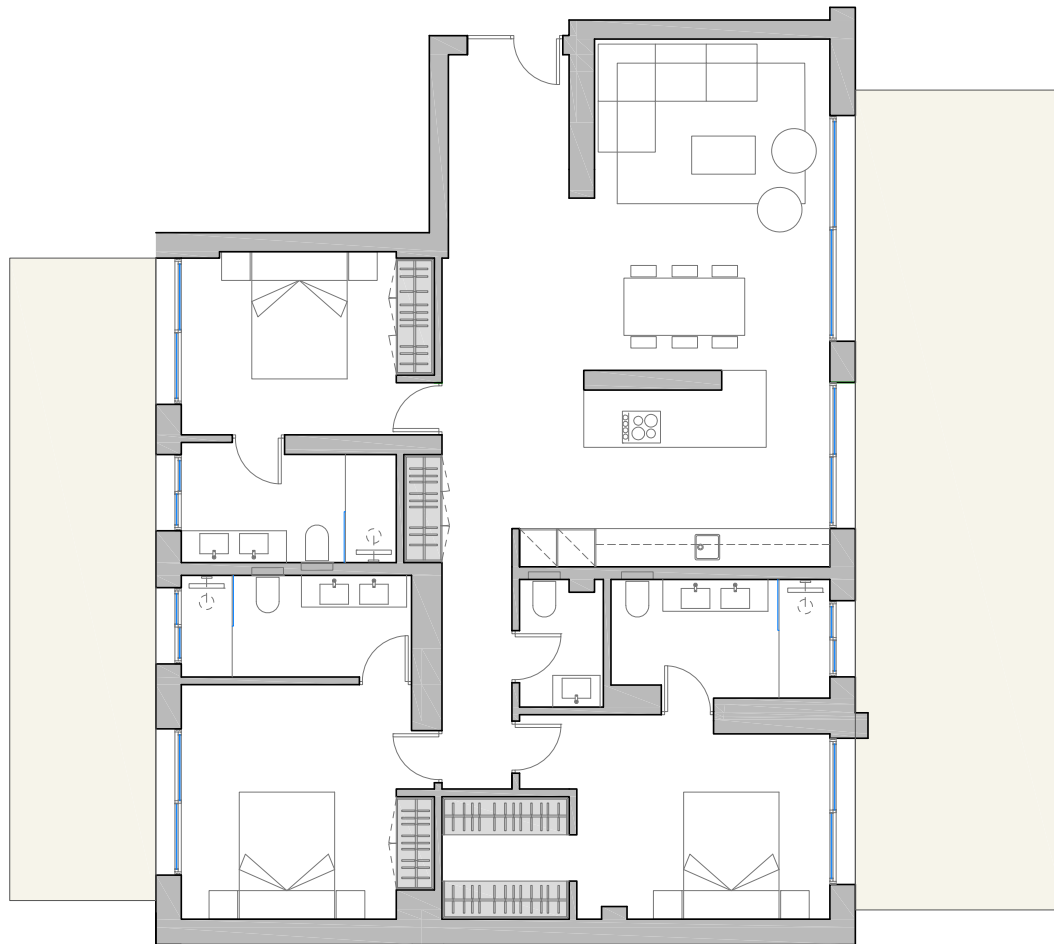
Built
Terrace

75,59 m²

TYPE FLOOR [2-7]



PENTHOUSE | 1



Bedrooms

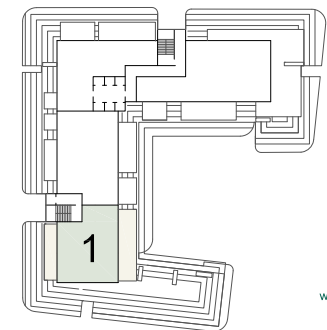
3

Total useful
area BOJA
128,55 m²

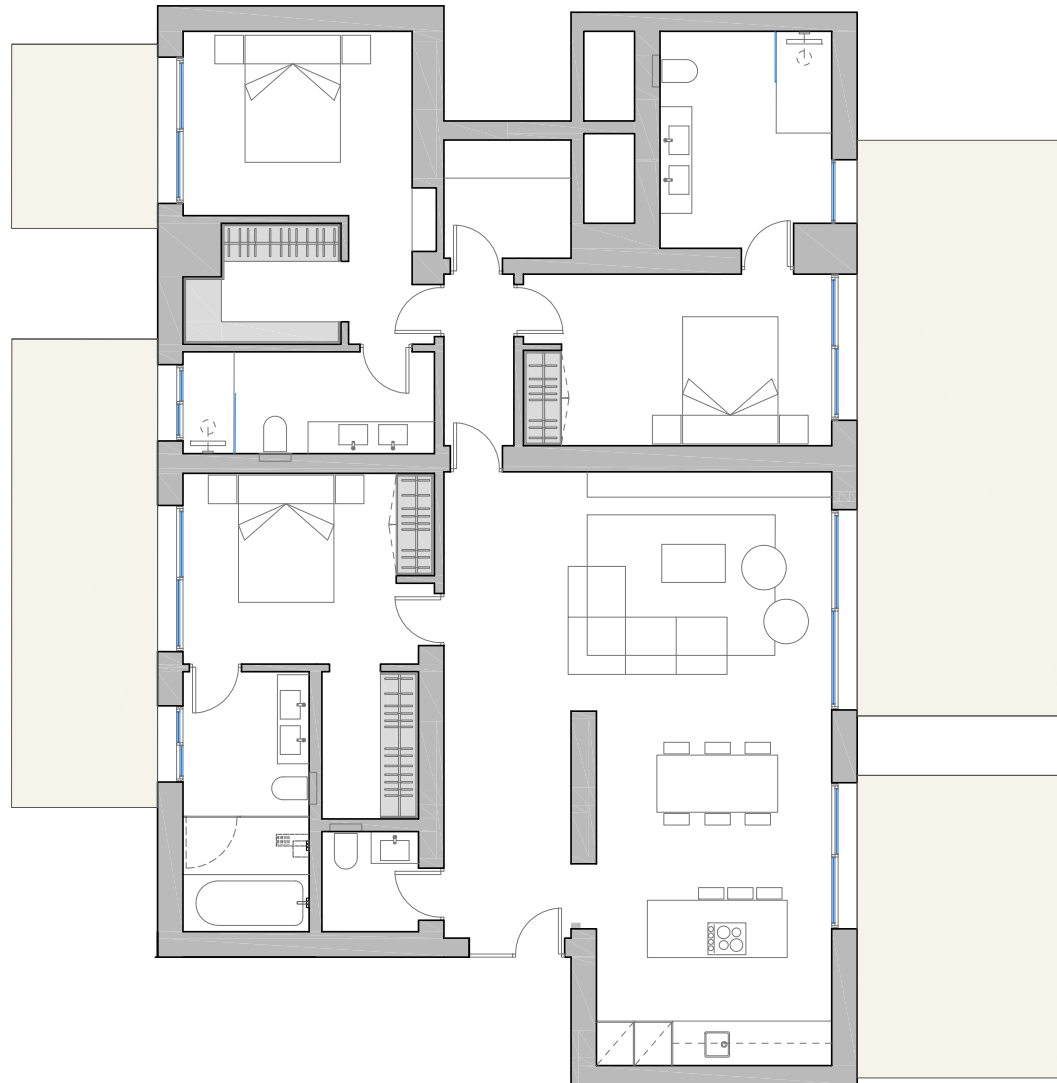
Total built
area BOJA
183,41 m²

Built
Terrace
62,76 m²

PENTHOUSE



PENTHOUSE | 2



Bedrooms

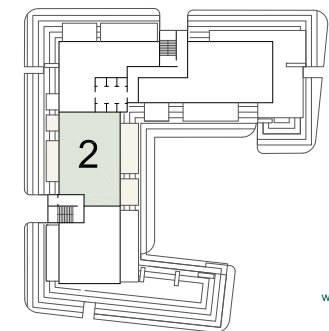
3

Total useful
area BOJA
143,01 m²

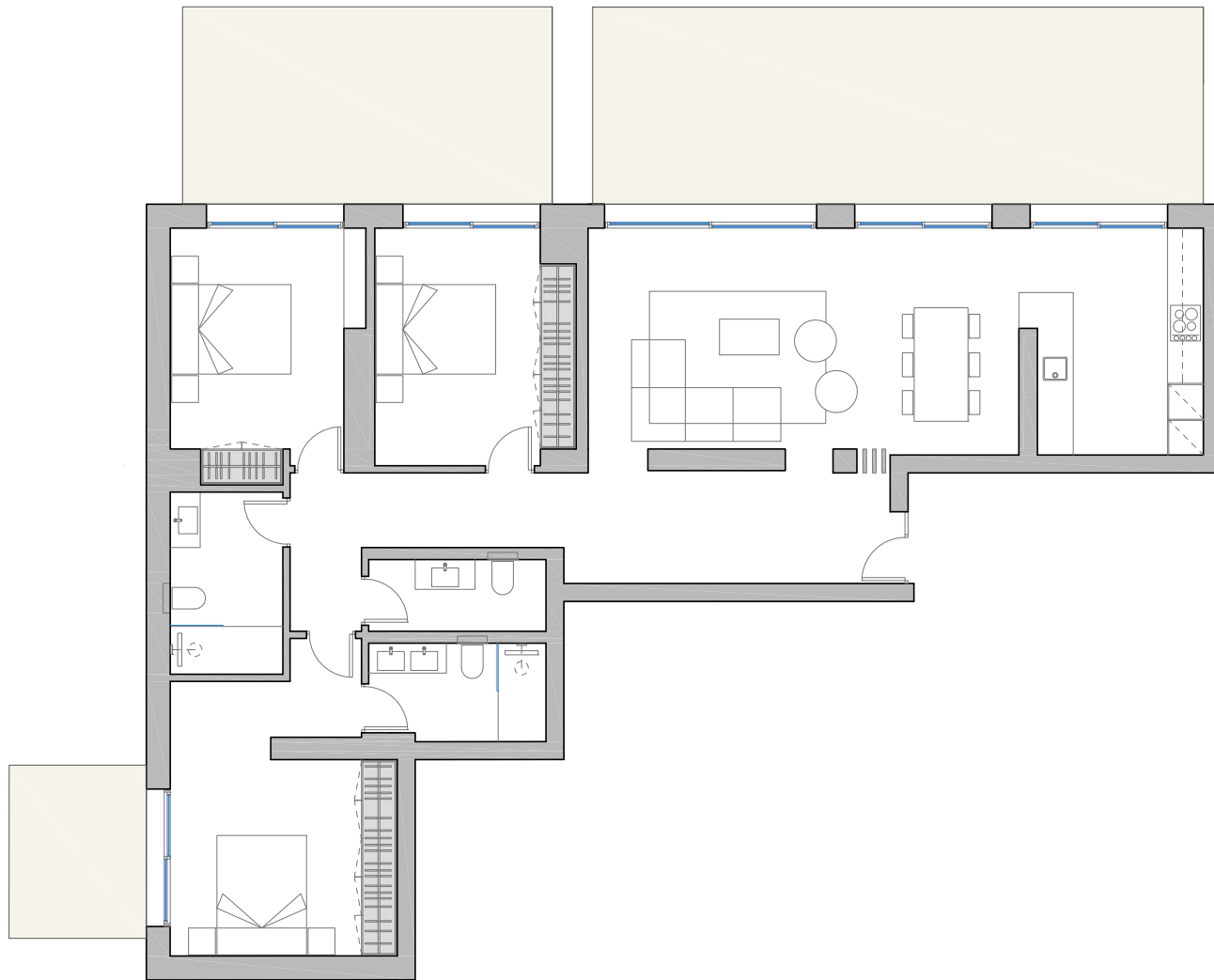
Total built
area BOJA
208,77 m²

Built
Terrace
66,1 m²

PENTHOUSE



PENTHOUSE | 3



Bedrooms

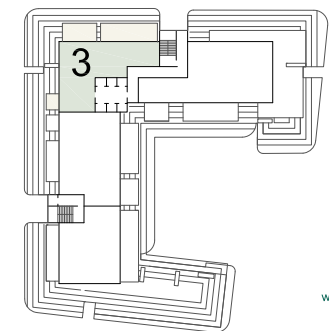
3

Total useful
area BOJA
118,70 m²

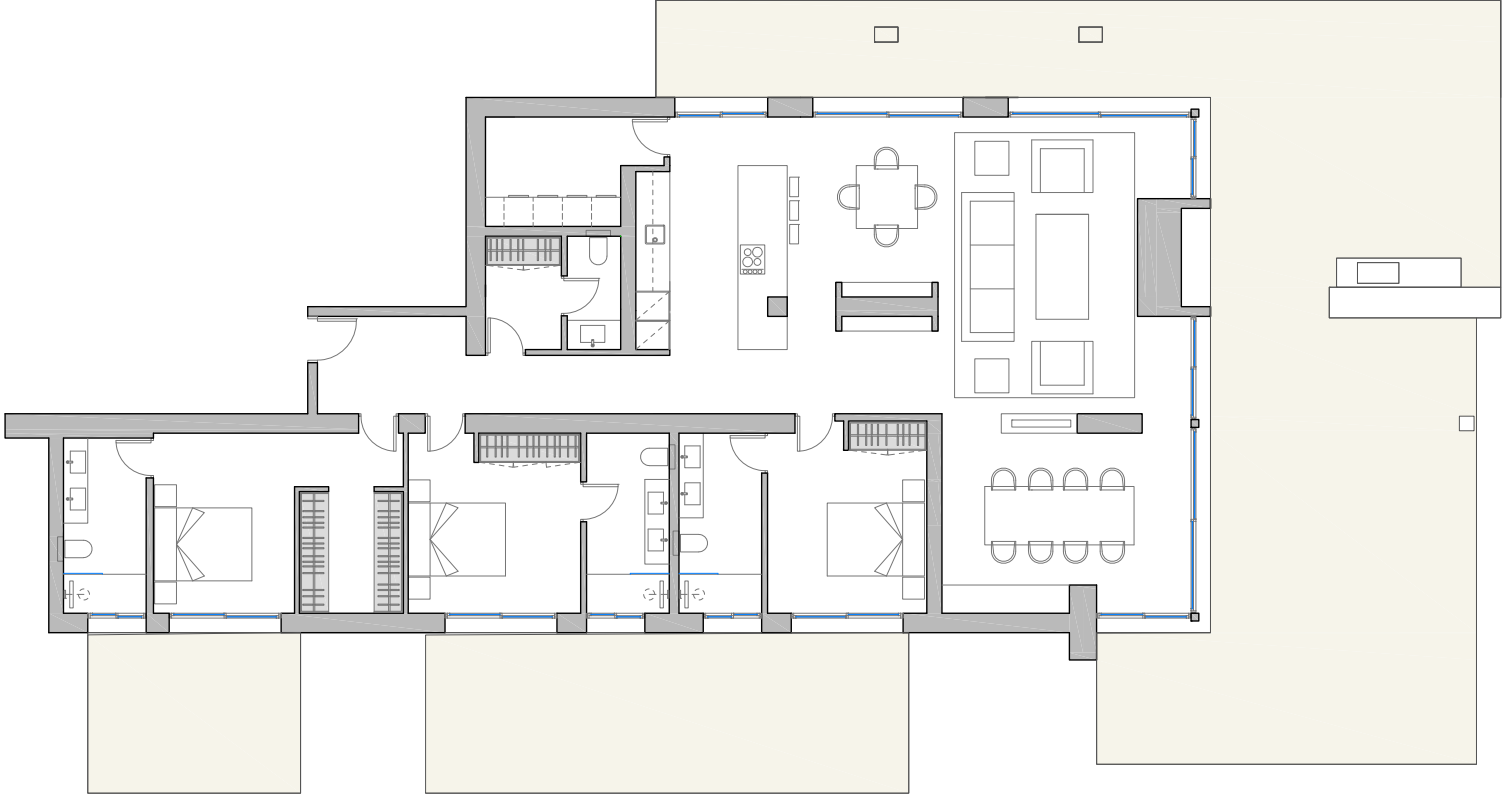
Total built
area BOJA
183,56 m²

Built
Terrace
59,97 m²

PENTHOUSE



PENTHOUSE | 4



Bedrooms

3

**Total useful
area BOJA**

189,03 m²

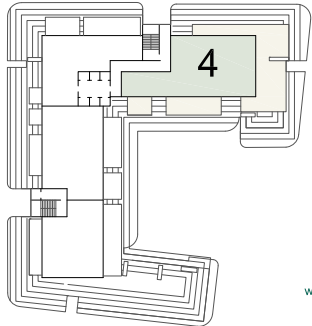
**Total built
area BOJA**

269,22 m²

**Built
Terrace**

163,04 m²

PENTHOUSE





Este brochure es solo para fines de marketing y no forma parte de ninguna oferta o contrato entre ninguna de las partes de ninguna manera. Se sabe que toda la información contenida en este brochure es precisa en el momento de la producción, pero está sujeta a cambios sin previo aviso. Tenga en cuenta que las imágenes aquí contenidas se basan en planes técnicos y son representaciones artísticas generadas por computadora de estos planes. Se ha tomado el mayor cuidado para asegurar la exactitud de la información.