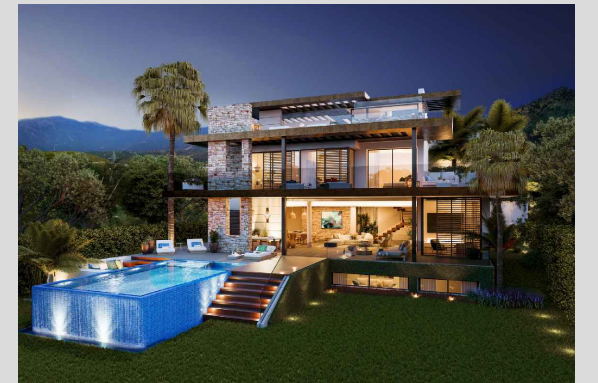


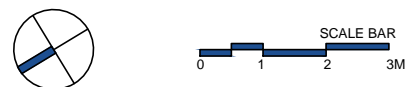
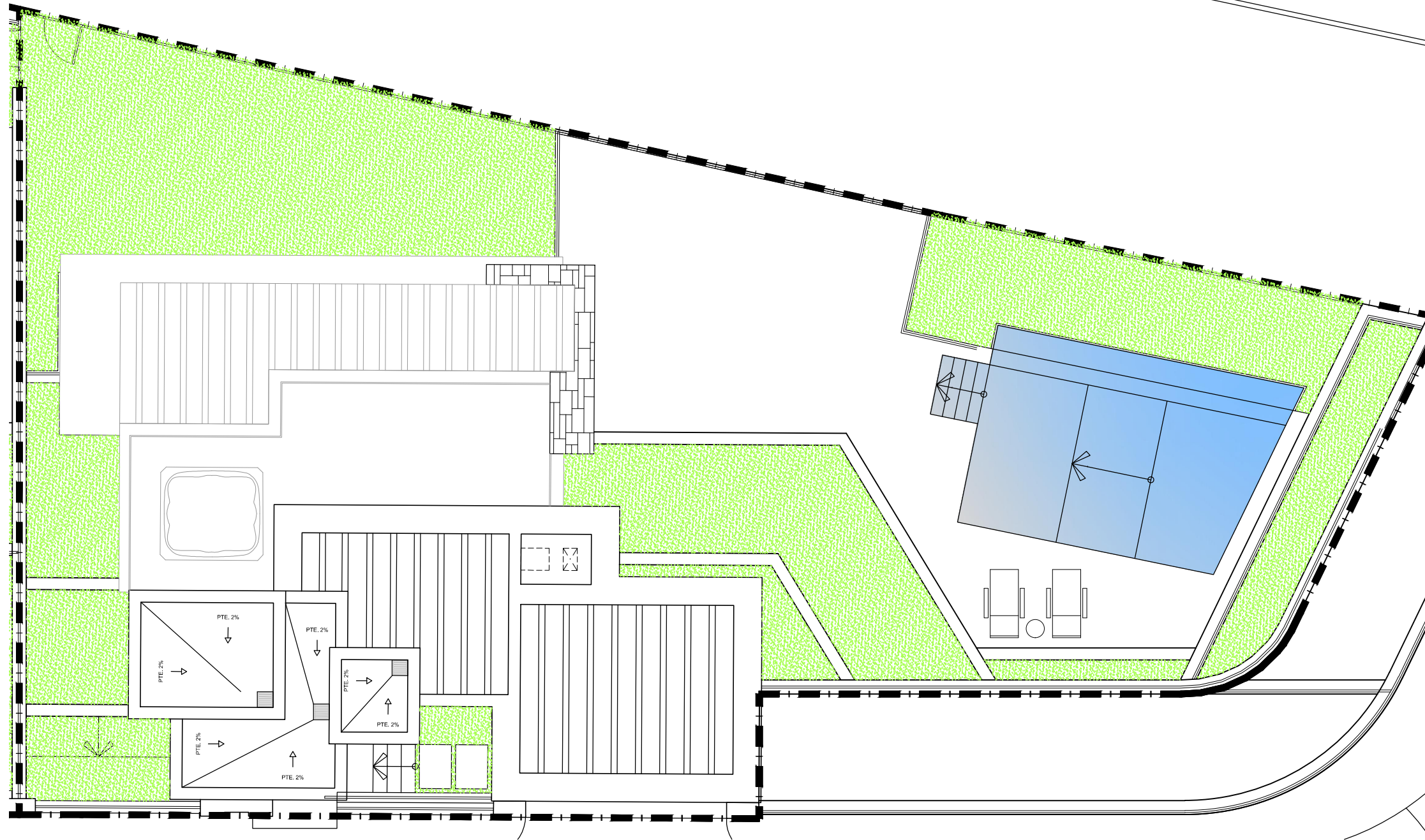
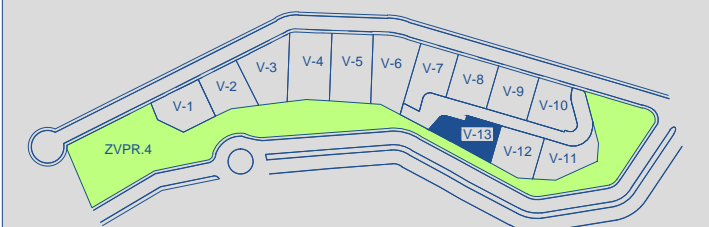
VILLA 13 Site Plan



APPROXIMATE AREAS	M ²
Basement built area	120,47
Ground floor built area	214,98
First floor built area	138,06
Solarium built area	92,80
Parking area	33,22
Pool area	37,47
Total	637,00

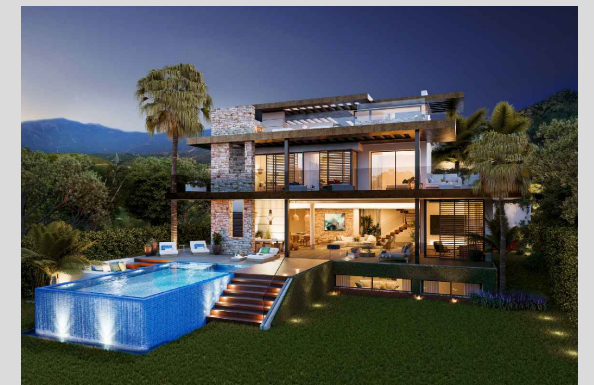
Plot 13 area	500,39
Community green area	5.388,69
Total useful area	276,34

SITE PLAN 



These iMages are not contractual but only for illustrative purposes. The iMages are subject to technical, legal or coMmercial Modifications approved by the project ManageMent or the coMpetent authority. The 3D iMages corresponding to the façades , coMMon eleMents, and the rest of the spaces are Merely indicative and will be subject to verification or Modification in the technical projects. The furniture of the 3D iMages is not included and the equipMent of the villas will be indicated in the corresponding BUILTING and quality specifications. The energy certification corresponds with the one established in the project in process. All the inforMation and docuMentation will be provided according to the terMs established in the Royal Decree 515/1989 and in the rest of the autoNoMous or state regulations currently in force that could coMpleMent the Mentioned Decree.

VILLA 13 Basement

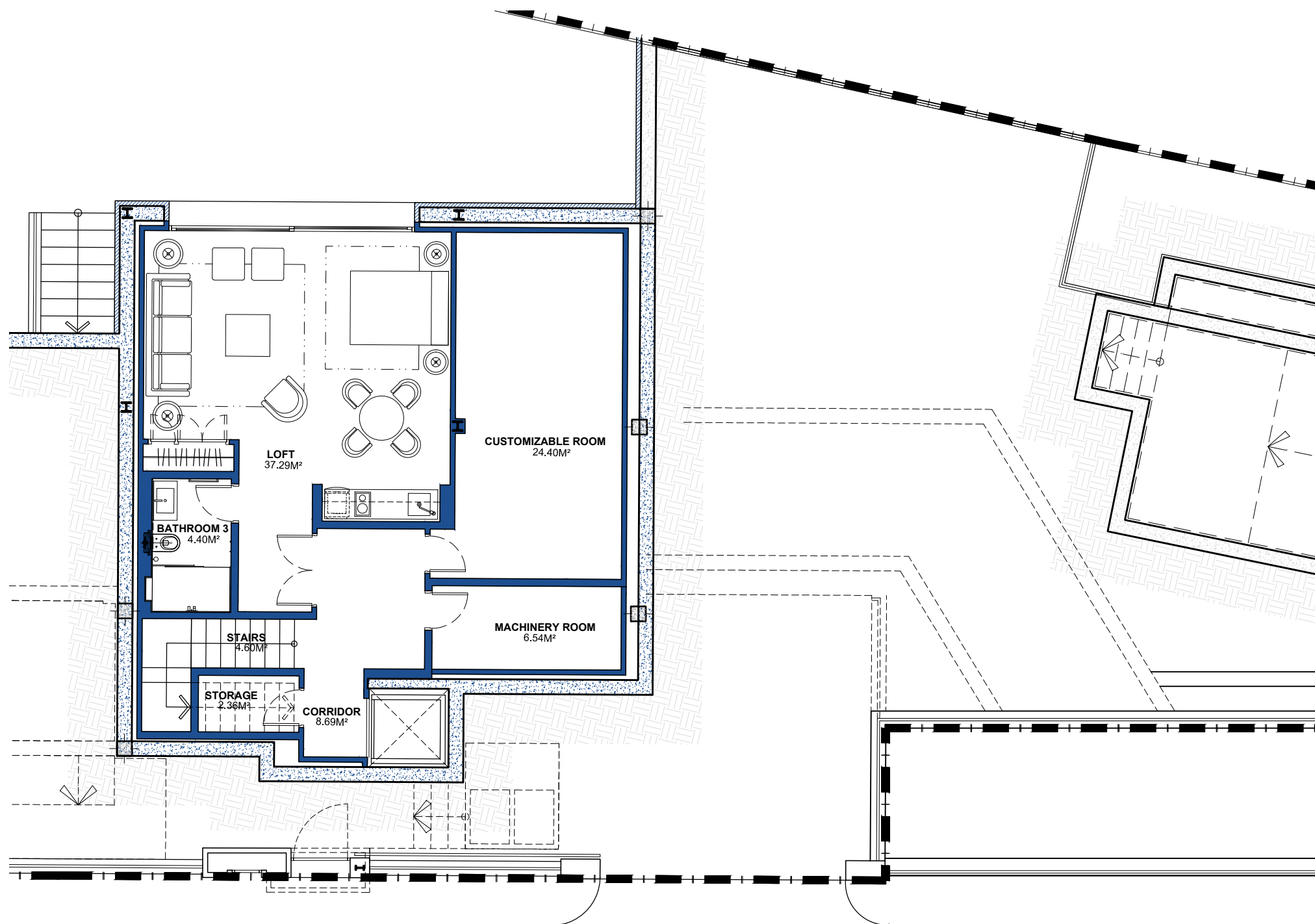
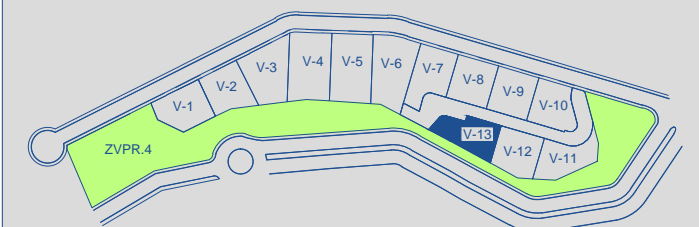


BUILT AREA 120,47 M²

APPROXIMATE USEFUL AREAS M²

Loft	37,29
Customizable Room	24,40
Bathroom 3	4,40
Other Areas	22,09
Total	88,28

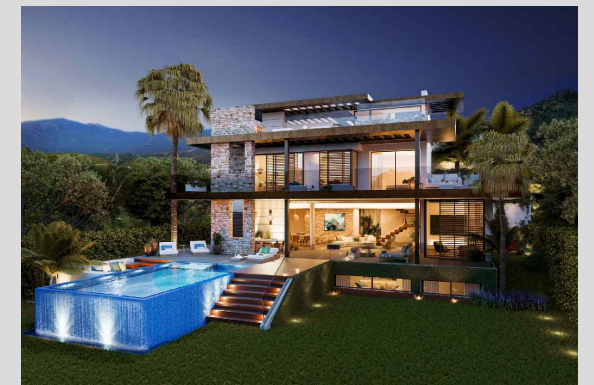
SITE PLAN



SCALE BAR
0 0.5 1 2 3M

These images are not contractual but only for illustrative purposes. The images are subject to technical, legal or commercial modifications approved by the project management or the competent authority. The 3D images corresponding to the façades, common elements, and the rest of the spaces are merely indicative and will be subject to verification or modification in the technical projects. The furniture of the 3D images is not included and the equipment of the villas will be indicated in the corresponding building and quality specifications. The energy certification corresponds with the one established in the project in process. All the information and documentation will be provided according to the terms established in the Royal Decree 515/1989 and in the rest of the autonomous or state regulations currently in force that could complement the mentioned decree.

VILLA 13 Ground Floor

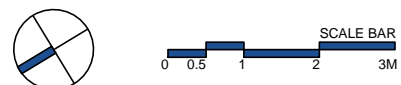
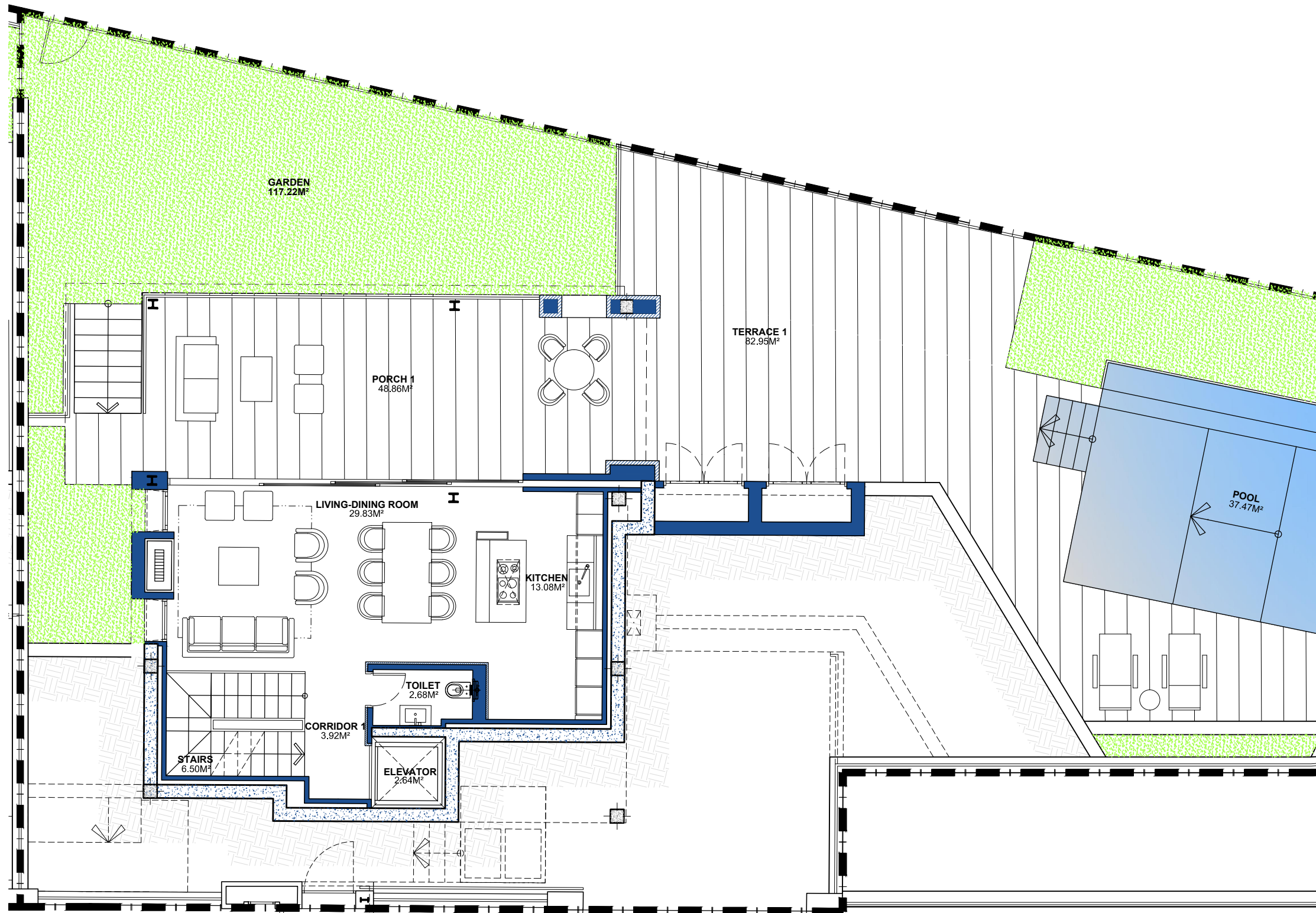
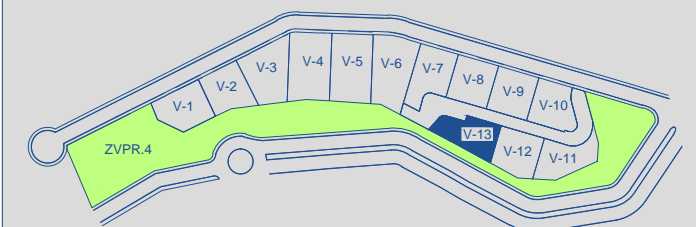


BUILT AREA 214,98 M²

APPROXIMATE USEFUL AREAS M²

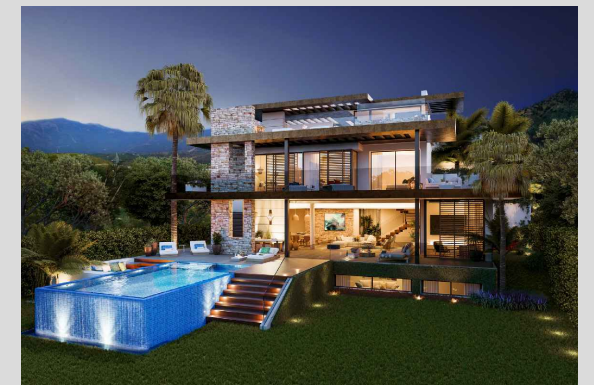
Living-Dining Room	29,83
Kitchen	13,08
Toilet	2,68
Other Areas	12,76
Porches and Terraces	131,81
Total	190,46
Pool	37,47
Garden	117,22
Total	345,15

SITE PLAN



These images are not contractual but only for illustrative purposes. The images are subject to technical, legal or commercial modifications approved by the project management or the competent authority. The 3D images corresponding to the façades, common elements, and the rest of the spaces are merely indicative and will be subject to verification or modification in the technical projects. The furniture of the 3D images is not included and the equipment of the villas will be indicated in the corresponding building and quality specifications. The energy certification corresponds with the one established in the project in process. All the information and documentation will be provided according to the terms established in the Royal Decree 515/1989 and in the rest of the autonomous or state regulations currently in force that could complement the mentioned decree.

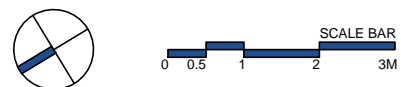
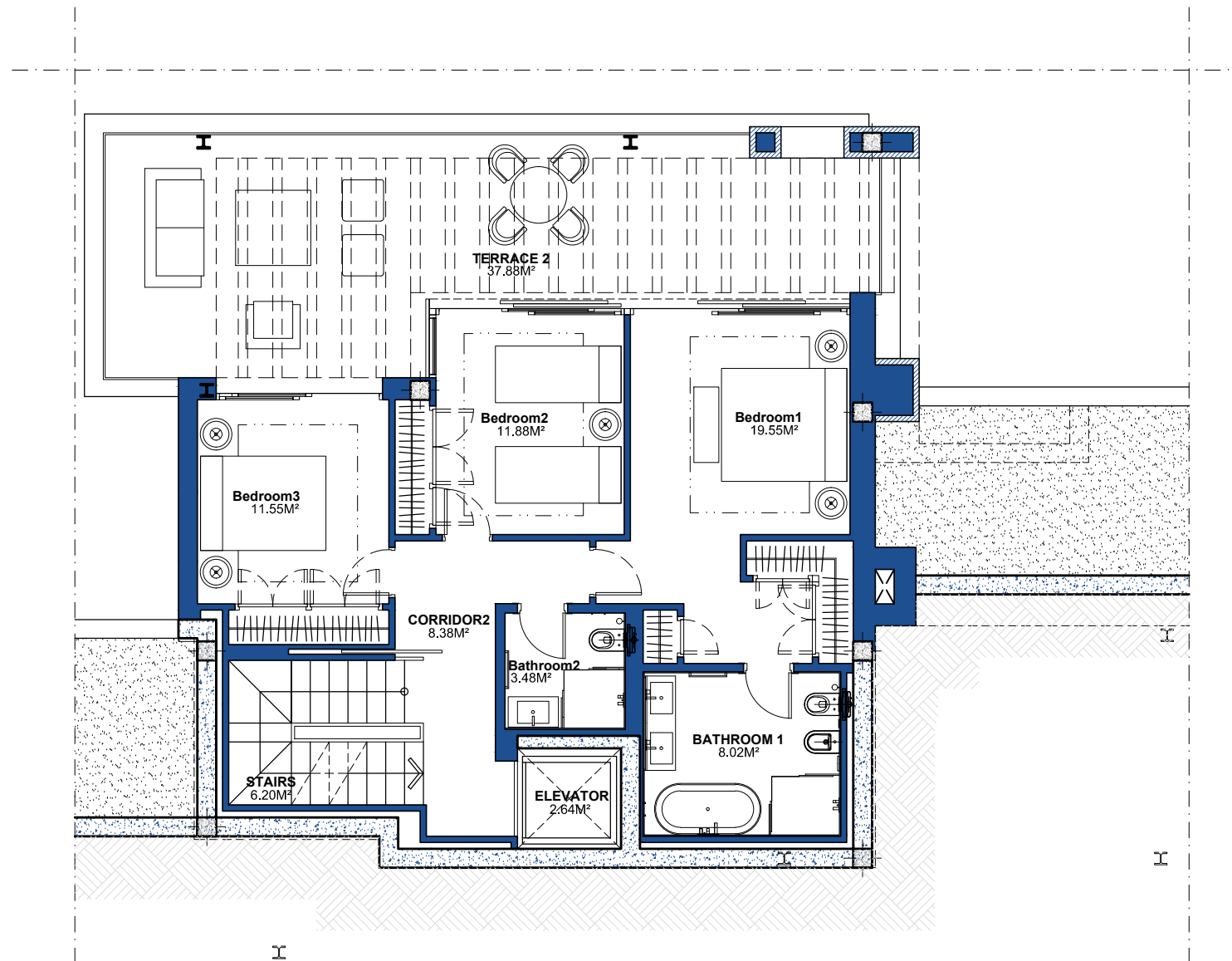
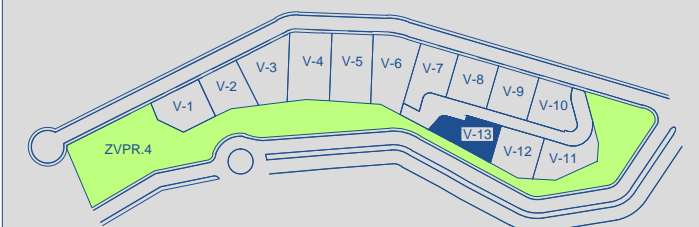
VILLA 13 First Floor



BUILT AREA 138,06 M²

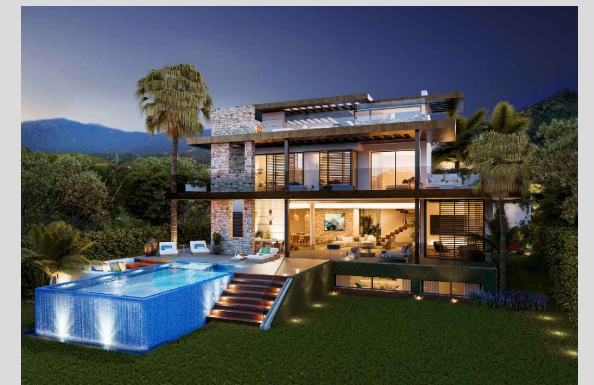
APPROXIMATE USEFUL AREAS	M ²
Bedroom 1	19,55
Bedroom 2	11,88
Bedroom 3	11,55
Bathroom 1	8,02
Bathroom 2	3,48
Other Areas	17,22
Porches and Terraces	37,88
Total	109.58

SITE PLAN



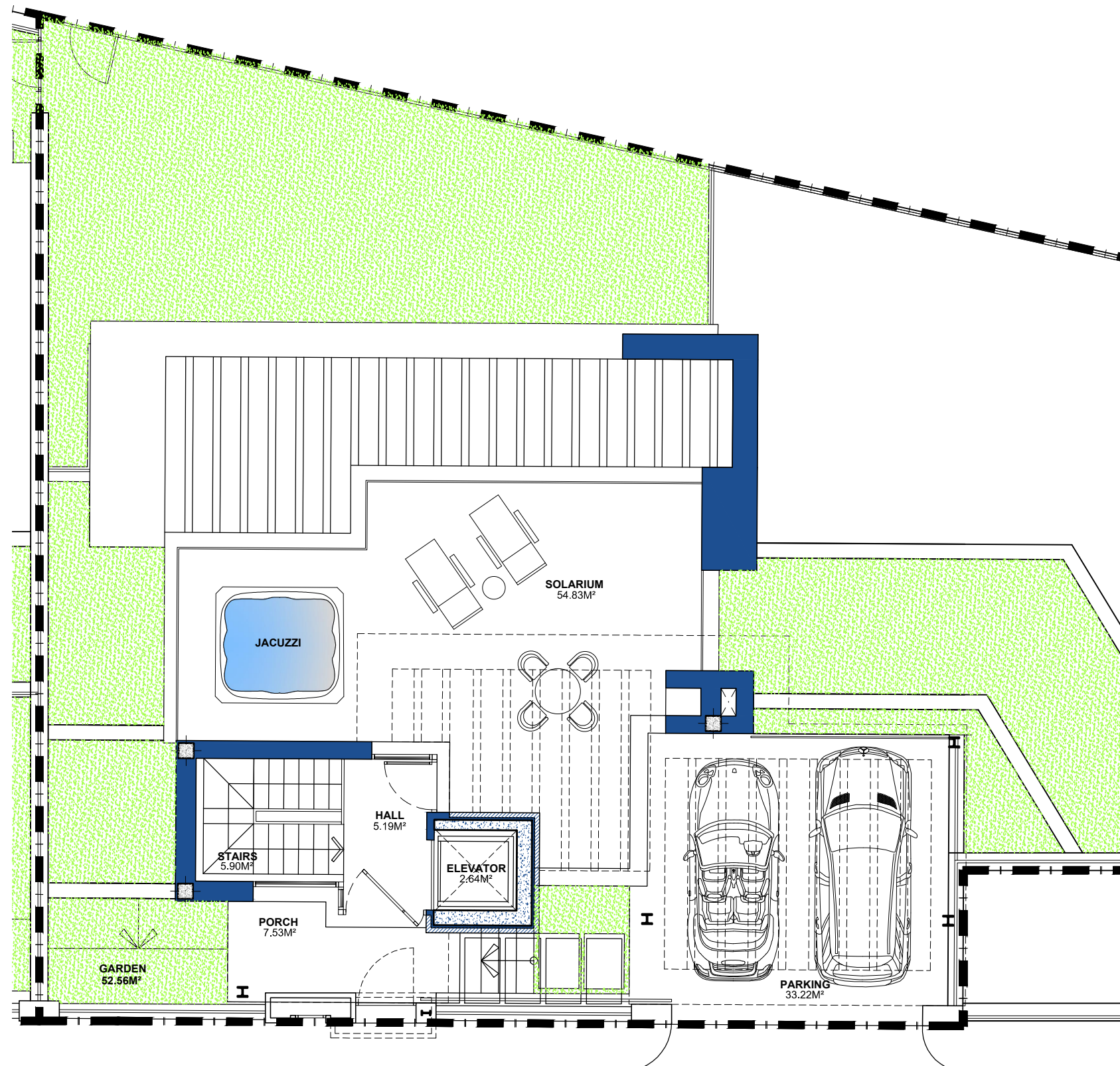
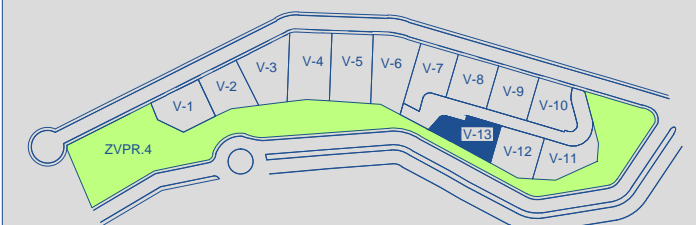
These images are not contractual but only for illustrative purposes. The images are subject to technical, legal or commercial modifications approved by the project management or the competent authority. The 3D images corresponding to the façades, common elements, and the rest of the spaces are merely indicative and will be subject to verification or modification in the technical projects. The furniture of the 3D images is not included and the equipment of the villas will be indicated in the corresponding building and quality specifications. The energy certification corresponds with the one established in the project in process. All the information and documentation will be provided according to the terms established in the Royal Decree 515/1989 and in the rest of the autonomous or state regulations currently in force that could complement the mentioned decree.

VILLA 13 Solarium



BUILT AREA	92,80 M²
APPROXIMATE USEFUL AREAS	M²
Hall	5,19
Other Areas	8,54
Porches and Terraces	62,36
Parking	76,09
Garden	33,22
Total	161,87

SITE PLAN



These images are not contractual but only for illustrative purposes. The images are subject to technical, legal or commercial modifications approved by the project management or the competent authority. The 3D images corresponding to the façades, common elements, and the rest of the spaces are merely indicative and will be subject to verification or modification in the technical projects. The furniture of the 3D images is not included and the equipment of the villas will be indicated in the corresponding building and quality specifications. The energy certification corresponds with the one established in the project in process. All the information and documentation will be provided according to the terms established in the Royal Decree 515/1989 and in the rest of the autonomous or state regulations currently in force that could complement the mentioned decree.