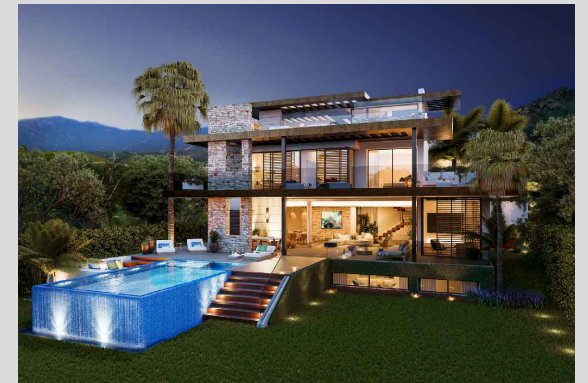
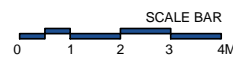
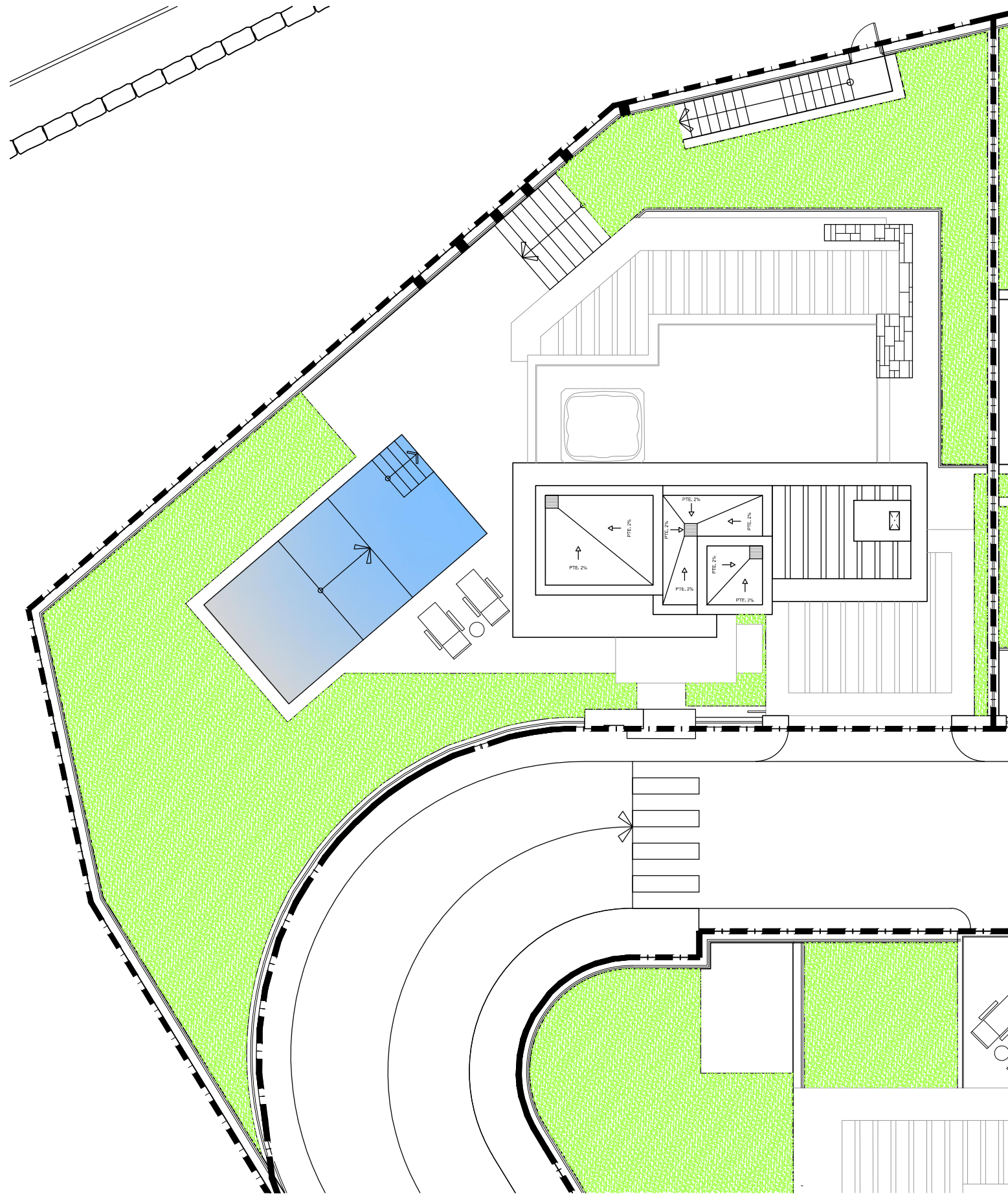
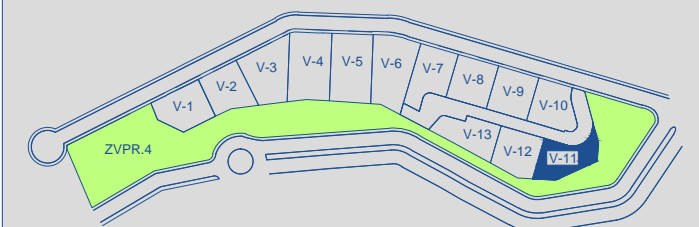


**VILLA 11 Site Plan**

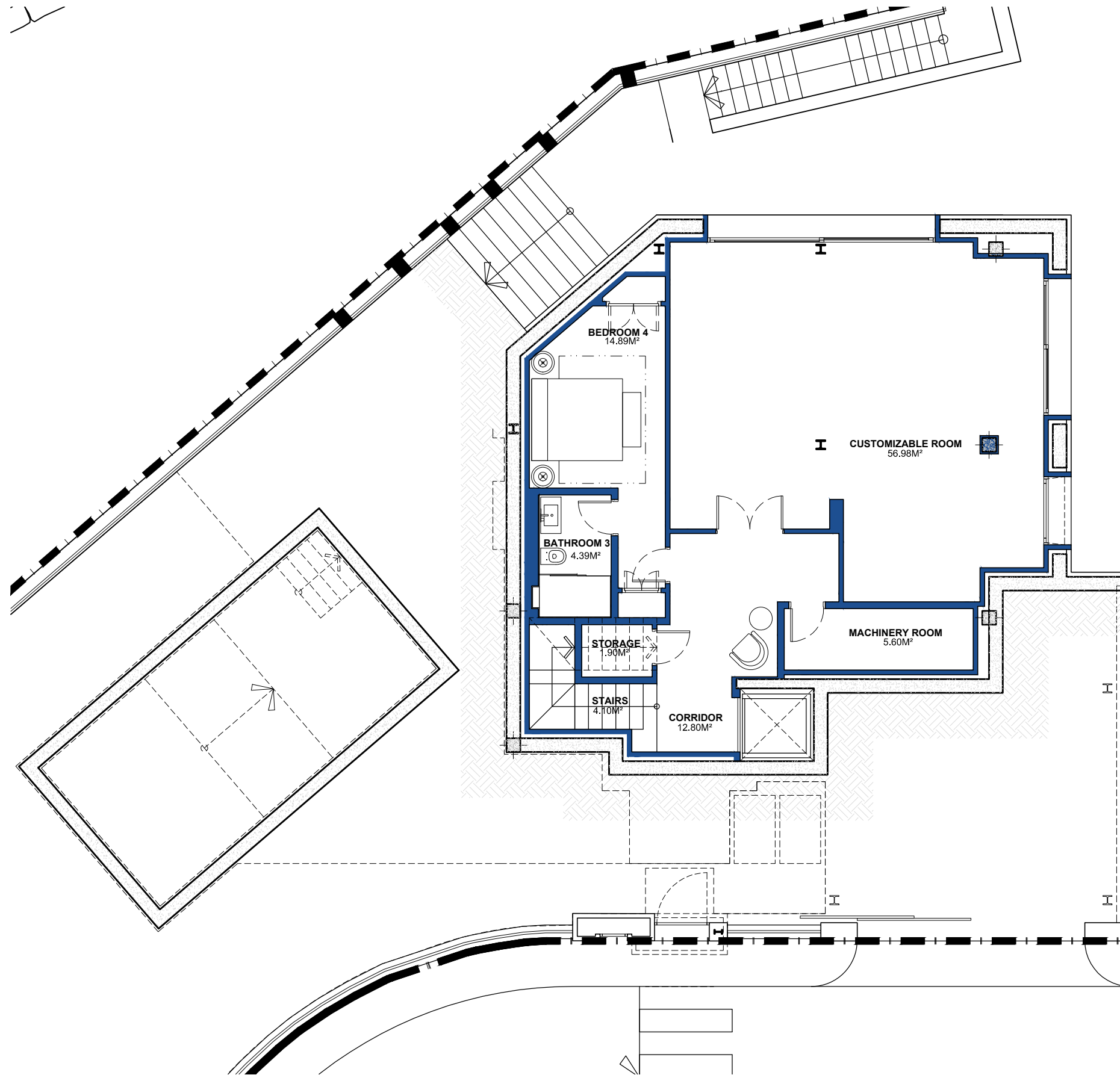


APPROXIMATE AREAS	M <sup>2</sup>
Basement built area	133,66
Ground floor built area	209,41
First floor built area	135,45
Solarium built area	90,22
Parking area	32,53
Pool area	32,00
<b>Total</b>	<b>633,27</b>
Plot 11 area	514,71
Community green area	5.388,69
Total useful area	300,23

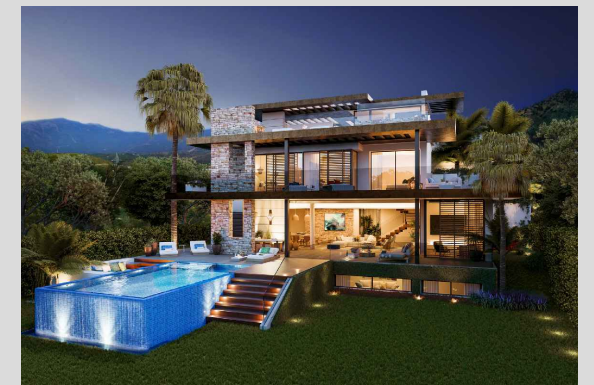
**SITE PLAN** 



These images are not contractual but only for illustrative purposes. The images are subject to technical, legal or commercial modifications approved by the project management or the competent authority. The 3D images corresponding to the façades, common elements, and the rest of the spaces are merely indicative and will be subject to verification or modification in the technical projects. The furniture of the 3D images is not included and the equipment of the villas will be indicated in the corresponding building and quality specifications. The energy certification corresponds with the one established in the project in process. All the information and documentation will be provided according to the terms established in the Royal Decree 515/1989 and in the rest of the autonomous or state regulations currently in force that could complement the mentioned decree.



## VILLA 11 Basement

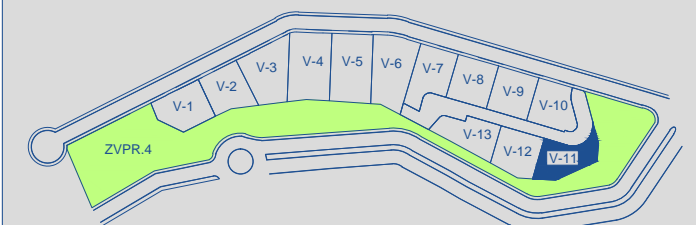


**BUILT AREA** 133,66 M<sup>2</sup>

**APPROXIMATE USEFUL AREAS** M<sup>2</sup>

Bedroom 4	14,89
Customizable Room	56,98
Bathroom 3	4,39
Other Areas	24,40
<b>Total</b>	<b>100,66</b>

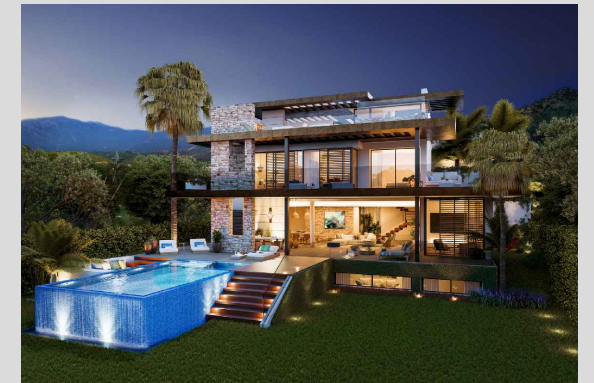
## SITE PLAN



SCALE BAR  
0 0.5 1 2 3M

These images are not contractual but only for illustrative purposes. The images are subject to technical, legal or commercial modifications approved by the project Management or the competent authority. The 3D images corresponding to the façades, common elements, and the rest of the spaces are merely indicative and will be subject to verification or modification in the technical projects. The furniture of the 3D images is not included and the equipment of the villas will be indicated in the corresponding Building and quality specifications. The energy certification corresponds with the one established in the project in process. All the information and documentation will be provided according to the terms established in the Royal Decree 515/1989 and in the rest of the autonomous or state regulations currently in force that could complement the mentioned Decree.

## VILLA 11 Ground Floor

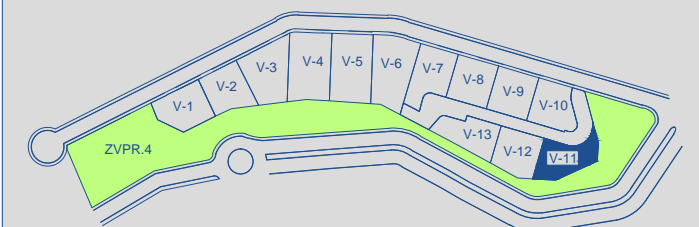


**BUILT AREA** 209,41 M<sup>2</sup>

**APPROXIMATE USEFUL AREAS** M<sup>2</sup>

Living-Dining Room	30,11
Kitchen	13,47
Toilet	2,88
Other Areas	16,70
Porches and Terraces	133,63
<hr/>	
Pool	32,00
Garden	178,42
Parking	32,52
<b>Total</b>	<b>439,73</b>

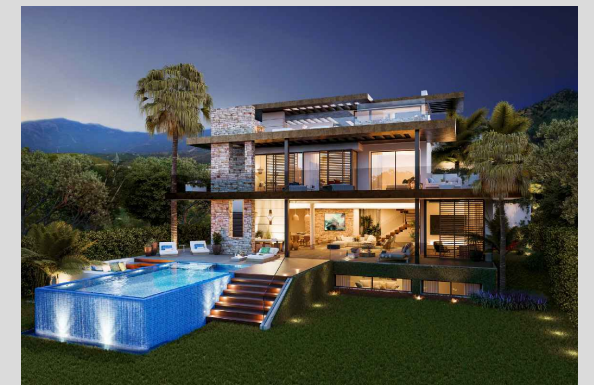
### SITE PLAN



SCALE BAR  
0 0.5 1 2 3M

These images are not contractual but only for illustrative purposes. The images are subject to technical, legal or commercial modifications approved by the project management or the competent authority. The 3D images corresponding to the façades, common elements, and the rest of the spaces are merely indicative and will be subject to verification or modification in the technical projects. The furniture of the 3D images is not included and the equipment of the villas will be indicated in the corresponding building and quality specifications. The energy certification corresponds with the one established in the project in process. All the information and documentation will be provided according to the terms established in the Royal Decree 515/1989 and in the rest of the autonomous or state regulations currently in force that could complement the mentioned decree.

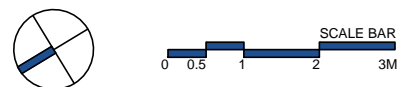
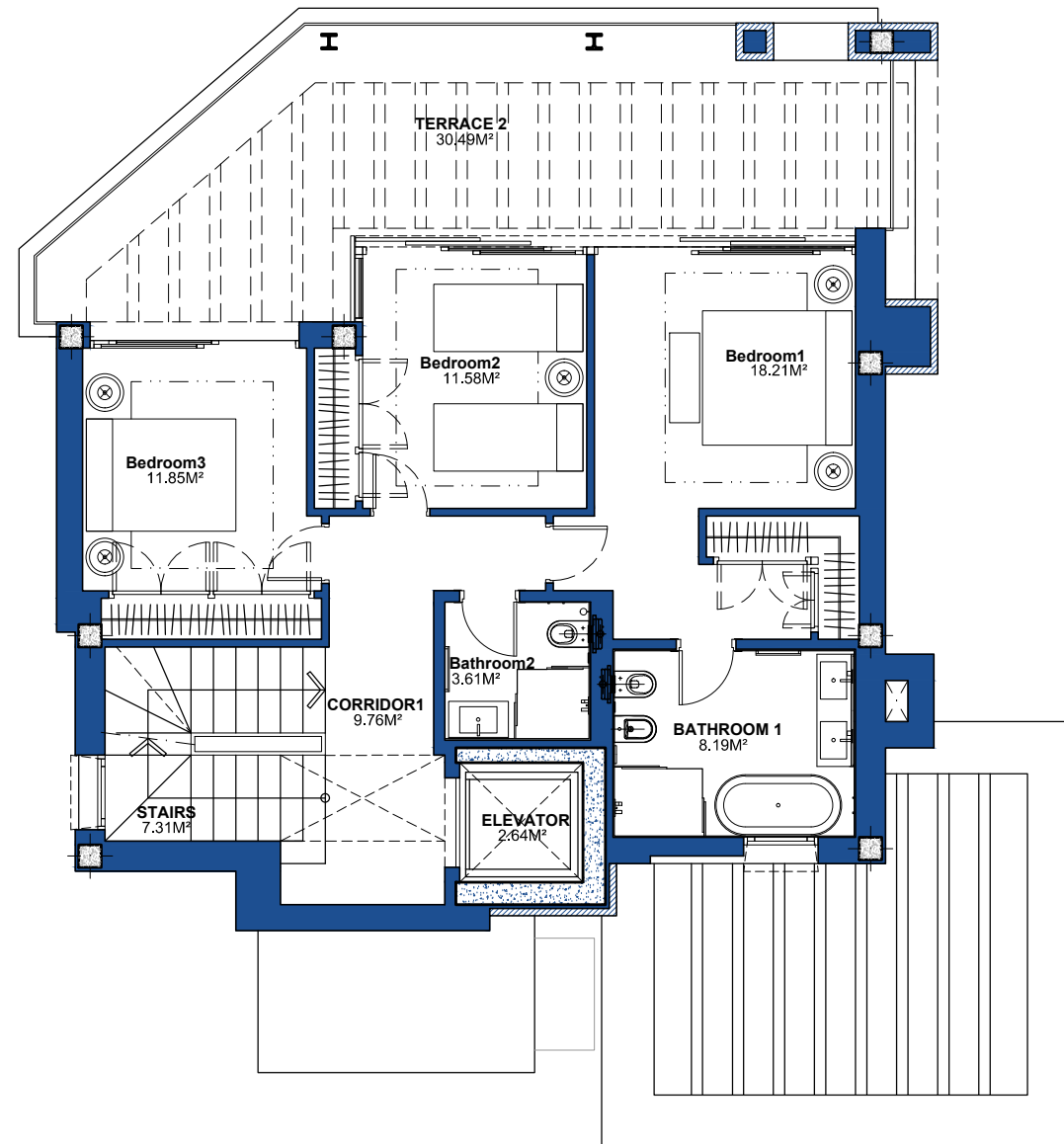
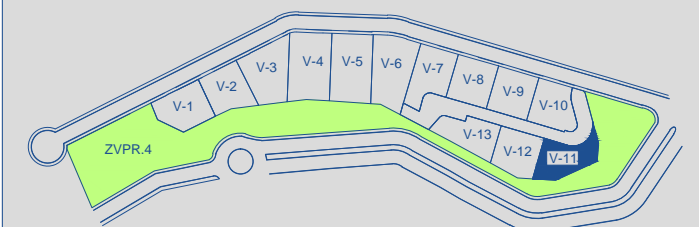
VILLA 11 First Floor



BUILT AREA 135,45 M<sup>2</sup>

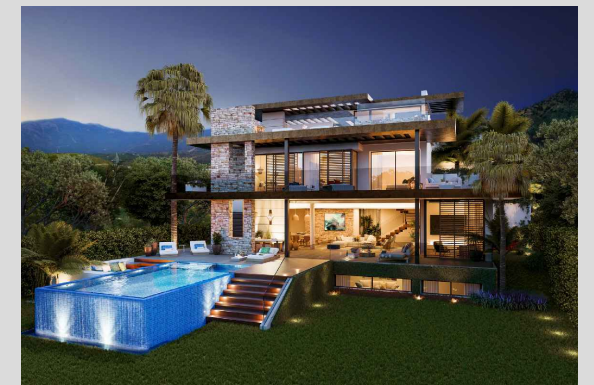
APPROXIMATE USEFUL AREAS	M <sup>2</sup>
Bedroom 1	18,21
Bedroom 2	11,58
Bedroom 3	11,85
Bathroom 1	8,19
Bathroom 2	3,61
Other Areas	19,71
Porches and Terraces	30,49
<b>Total</b>	<b>103,64</b>

SITE PLAN



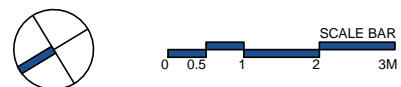
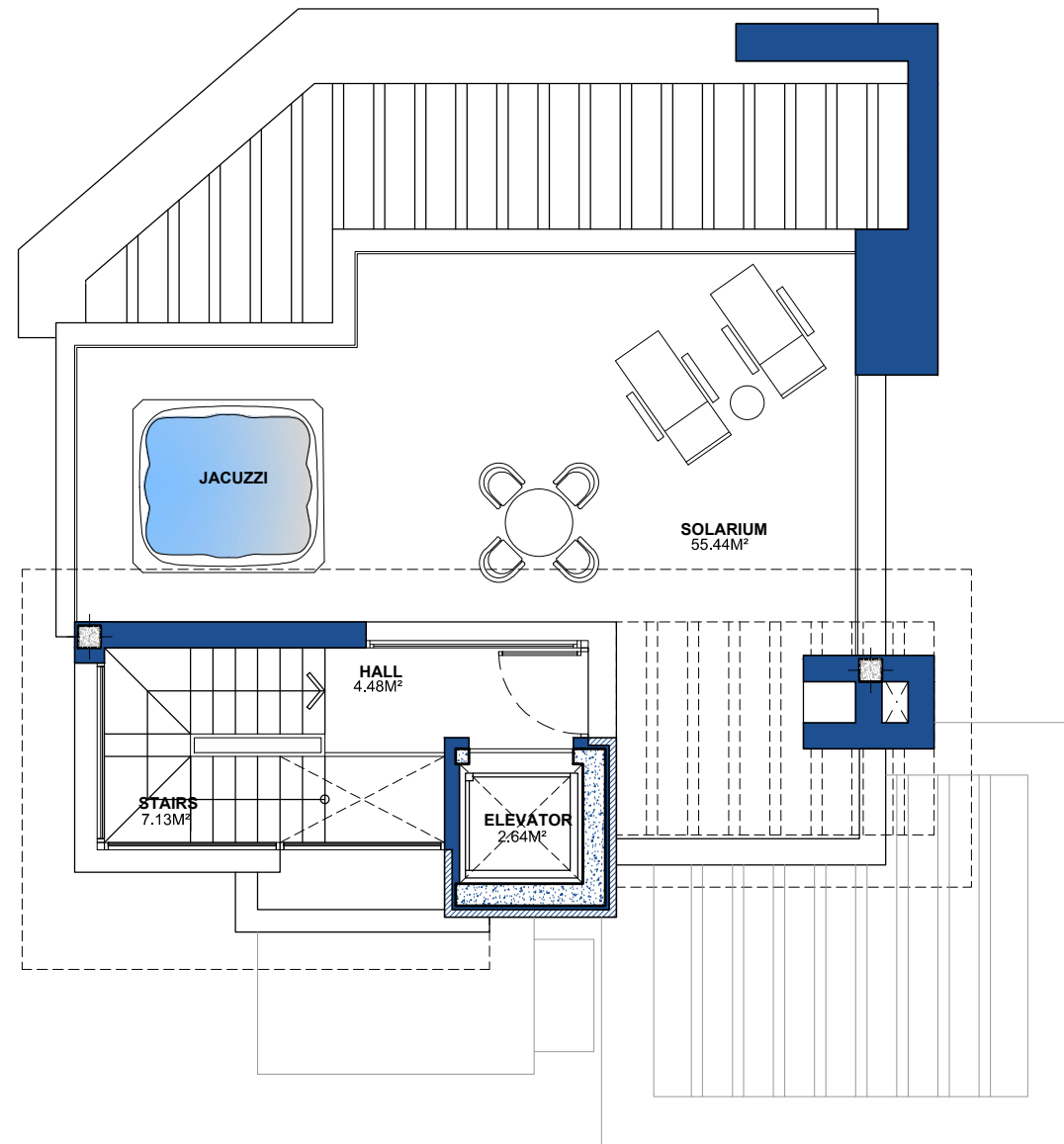
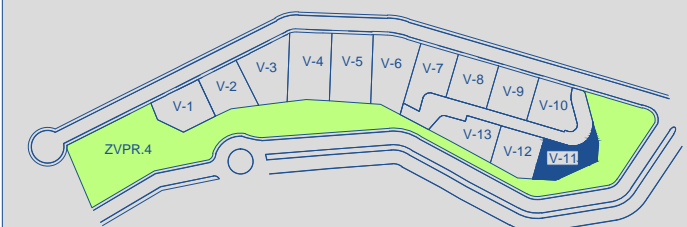
These images are not contractual but only for illustrative purposes. The images are subject to technical, legal or commercial modifications approved by the project management or the competent authority. The 3D images corresponding to the façades, common elements, and the rest of the spaces are merely indicative and will be subject to verification or modification in the technical projects. The furniture of the 3D images is not included and the equipment of the villas will be indicated in the corresponding building and quality specifications. The energy certification corresponds with the one established in the project in process. All the information and documentation will be provided according to the terms established in the Royal Decree 515/1989 and in the rest of the autonomous or state regulations currently in force that could complement the mentioned decree.

VILLA 11 Solarium



<b>BUILT AREA</b>	<b>90,22 M<sup>2</sup></b>
<b>APPROXIMATE USEFUL AREAS</b>	<b>M<sup>2</sup></b>
Hall	4,48
Other Areas	9,77
Porches and Terraces	55,44
<b>Total</b>	<b>69,69</b>

SITE PLAN 



These images are not contractual but only for illustrative purposes. The images are subject to technical, legal or commercial modifications approved by the project Management or the competent authority. The 3D images corresponding to the façades, common elements, and the rest of the spaces are merely indicative and will be subject to verification or modification in the technical projects. The furniture of the 3D images is not included and the equipment of the villas will be indicated in the corresponding Building and quality specifications. The energy certification corresponds with the one established in the project in process. All the information and documentation will be provided according to the terms established in the Royal Decree 515/1989 and in the rest of the autonomous or state regulations currently in force that could complement the mentioned Decree.