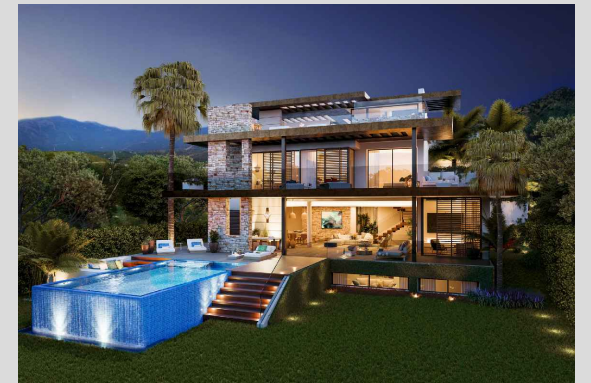
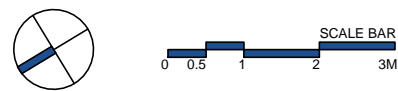
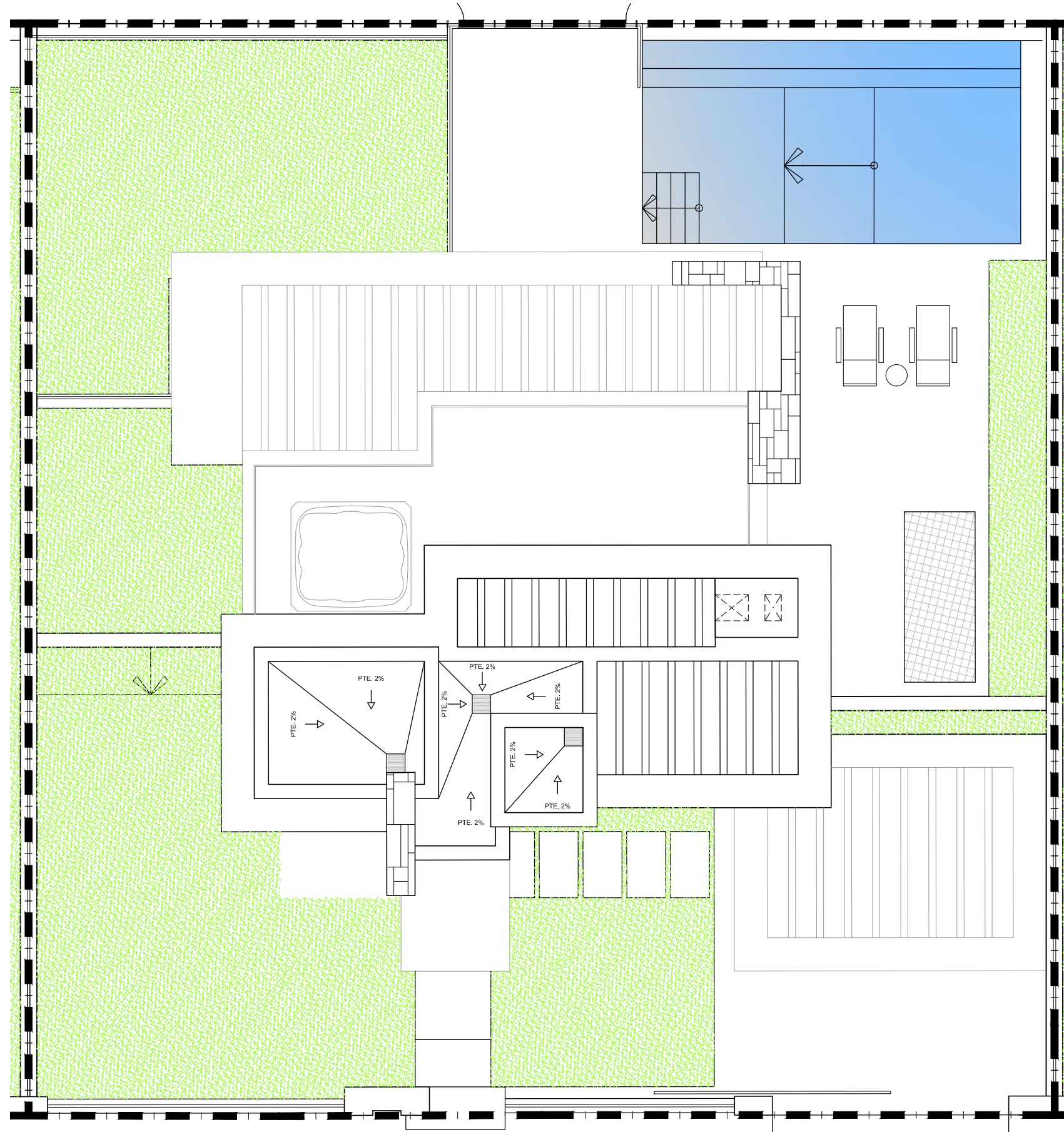
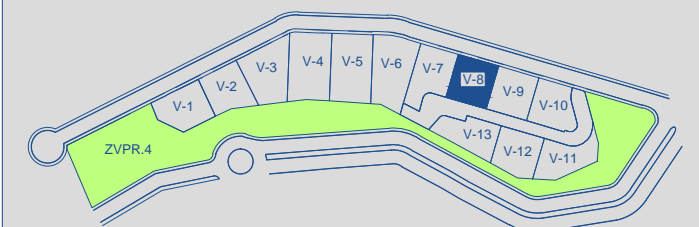


**VILLA 08 Site Plan**



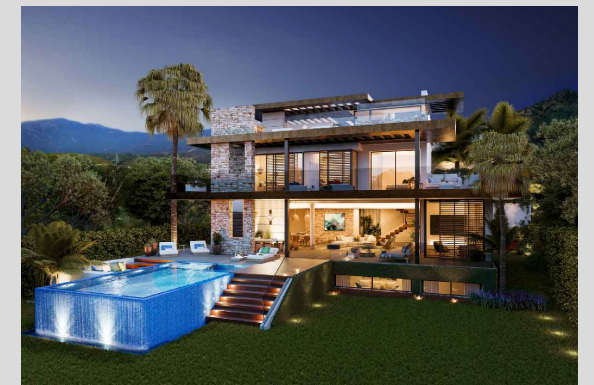
APPROXIMATE AREAS	M <sup>2</sup>
Basement built area	171,35
Ground floor built area	195,96
First floor built area	146,33
Solarium built area	92,45
Parking area	52,30
Pool area	34,38
<b>Total</b>	<b>692,77</b>
Plot 08 area	500,49
Community green area	5.388,69
Total useful area	296,50

**SITE PLAN** 



These images are not contractual but only for illustrative purposes. The images are subject to technical, legal or commercial modifications approved by the project management or the competent authority. The 3D images corresponding to the façades, common elements, and the rest of the spaces are merely indicative and will be subject to verification or modification in the technical projects. The furniture of the 3D images is not included and the equipment of the villas will be indicated in the corresponding building and quality specifications. The energy certification corresponds with the one established in the project in process. All the information and documentation will be provided according to the terms established in the Royal Decree 515/1989 and in the rest of the autonomous or state regulations currently in force that could complement the mentioned decree.

VILLA 08 Basement

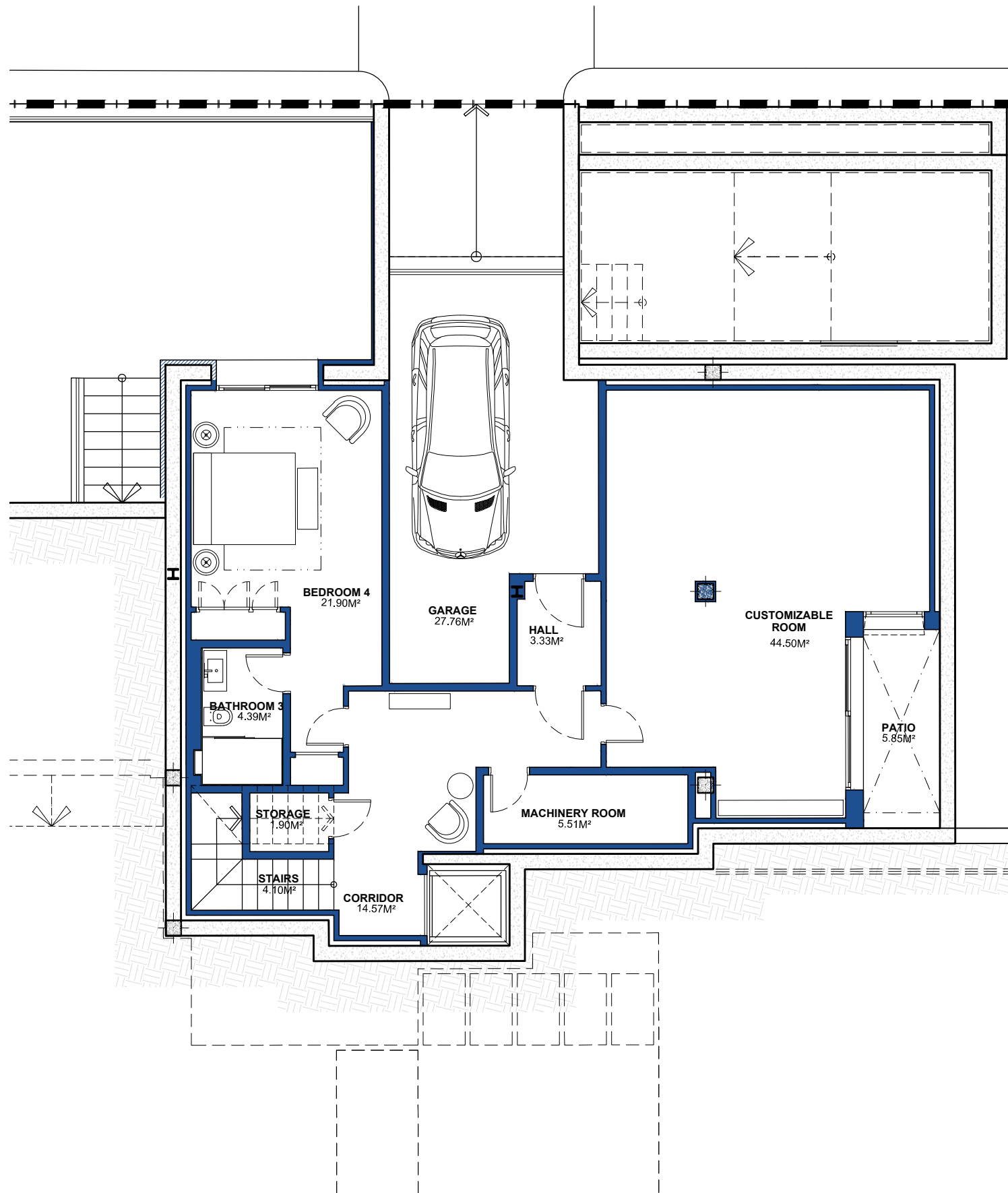
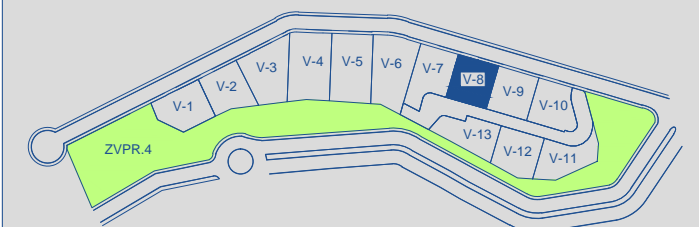


BUILT AREA 171,35 M<sup>2</sup>

APPROXIMATE USEFUL AREAS M<sup>2</sup>

Bedroom 4	21,90
Customizable Room	44,50
Bathroom 3	4,39
Garage	27,76
Other Areas	29,41
<b>Total</b>	<b>127,96</b>

SITE PLAN 

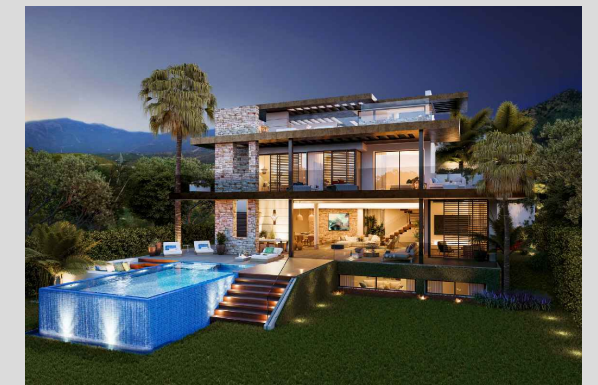


SCALE BAR  
0 0.5 1 2 3M

These images are not contractual but only for illustrative purposes. The images are subject to technical, legal or commercial modifications approved by the project management or the competent authority. The 3D images corresponding to the façades, common elements, and the rest of the spaces are merely indicative and will be subject to verification or modification in the technical projects. The furniture of the 3D images is not included and the equipment of the villas will be indicated in the corresponding building and quality specifications. The energy certification corresponds with the one established in the project in process. All the information and documentation will be provided according to the terms established in the Royal Decree 515/1989 and in the rest of the autonomous or state regulations currently in force that could complement the mentioned decree.



## VILLA 08 Ground Floor

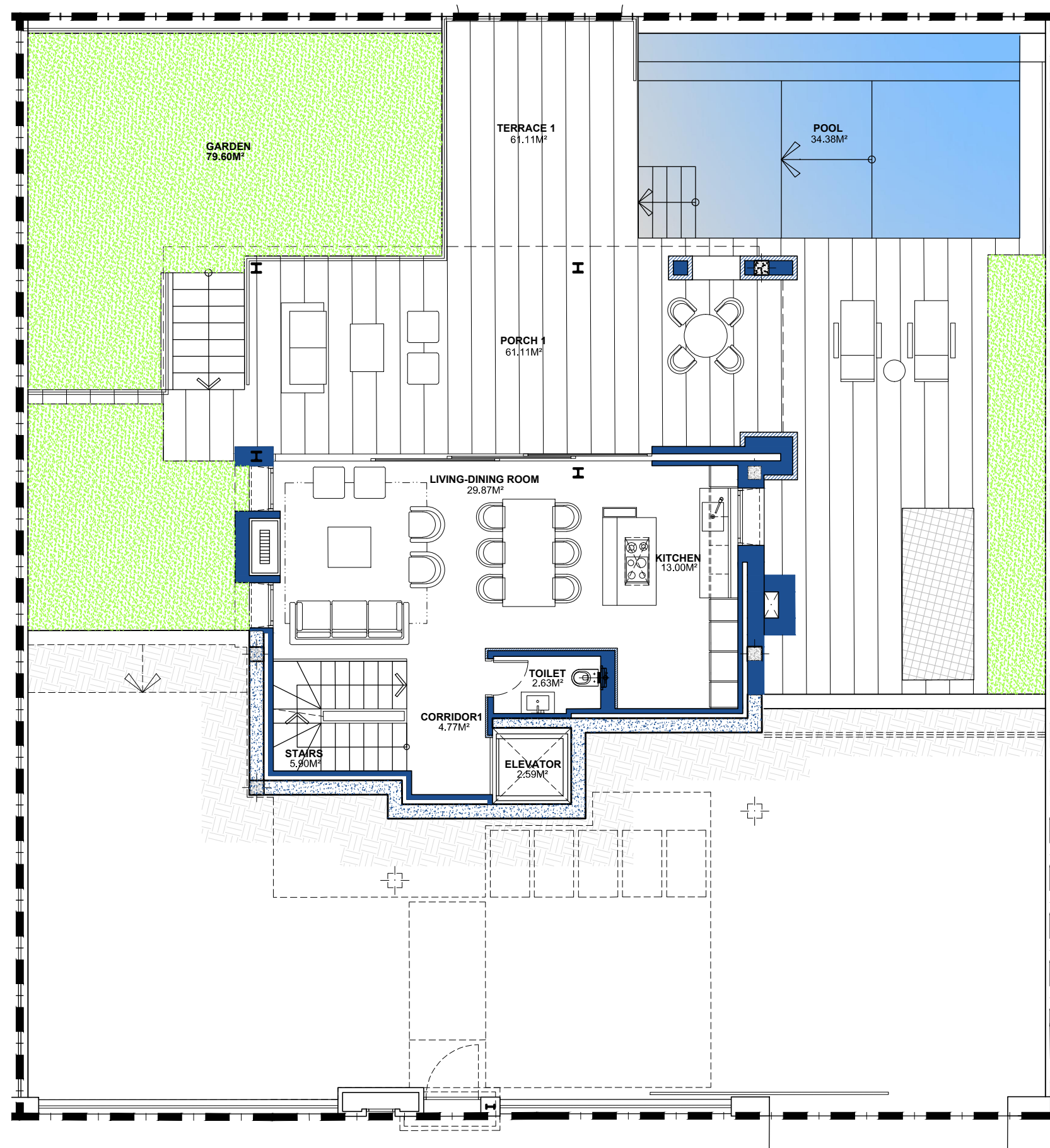
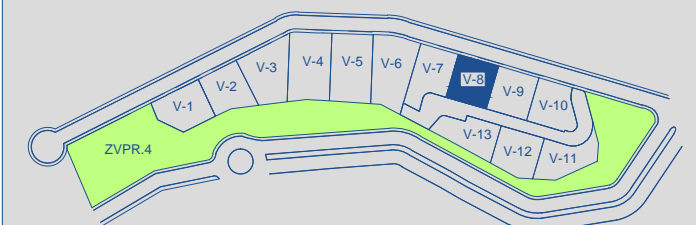


**BUILT AREA** 195,96 M<sup>2</sup>

**APPROXIMATE USEFUL AREAS** M<sup>2</sup>

Living-Dining Room	29,87
Kitchen	13,00
Toilet	2,63
Other Areas	13,26
Porches and Terraces	122,22
	180,98
Pool	34,38
Garden	79,60
<b>Total</b>	<b>294,96</b>

### SITE PLAN

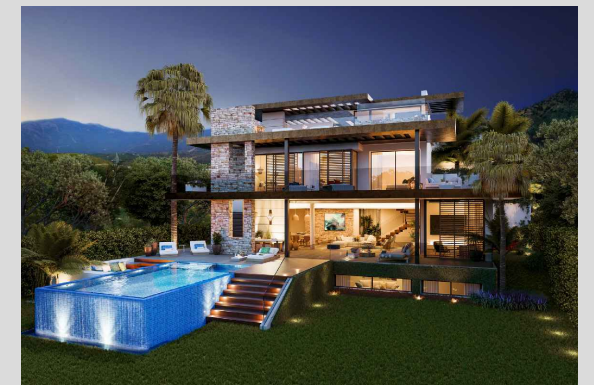


SCALE BAR  
0 0.5 1 2 3M

These images are not contractual but only for illustrative purposes. The images are subject to technical, legal or commercial modifications approved by the project management or the competent authority. The 3D images corresponding to the façades, common elements, and the rest of the spaces are merely indicative and will be subject to verification or modification in the technical projects. The furniture of the 3D images is not included and the equipment of the villas will be indicated in the corresponding building and quality specifications. The energy certification corresponds with the one established in the project in process. All the information and documentation will be provided according to the terms established in the Royal Decree 515/1989 and in the rest of the autonomous or state regulations currently in force that could complement the mentioned decree.



## VILLA 08 First Floor

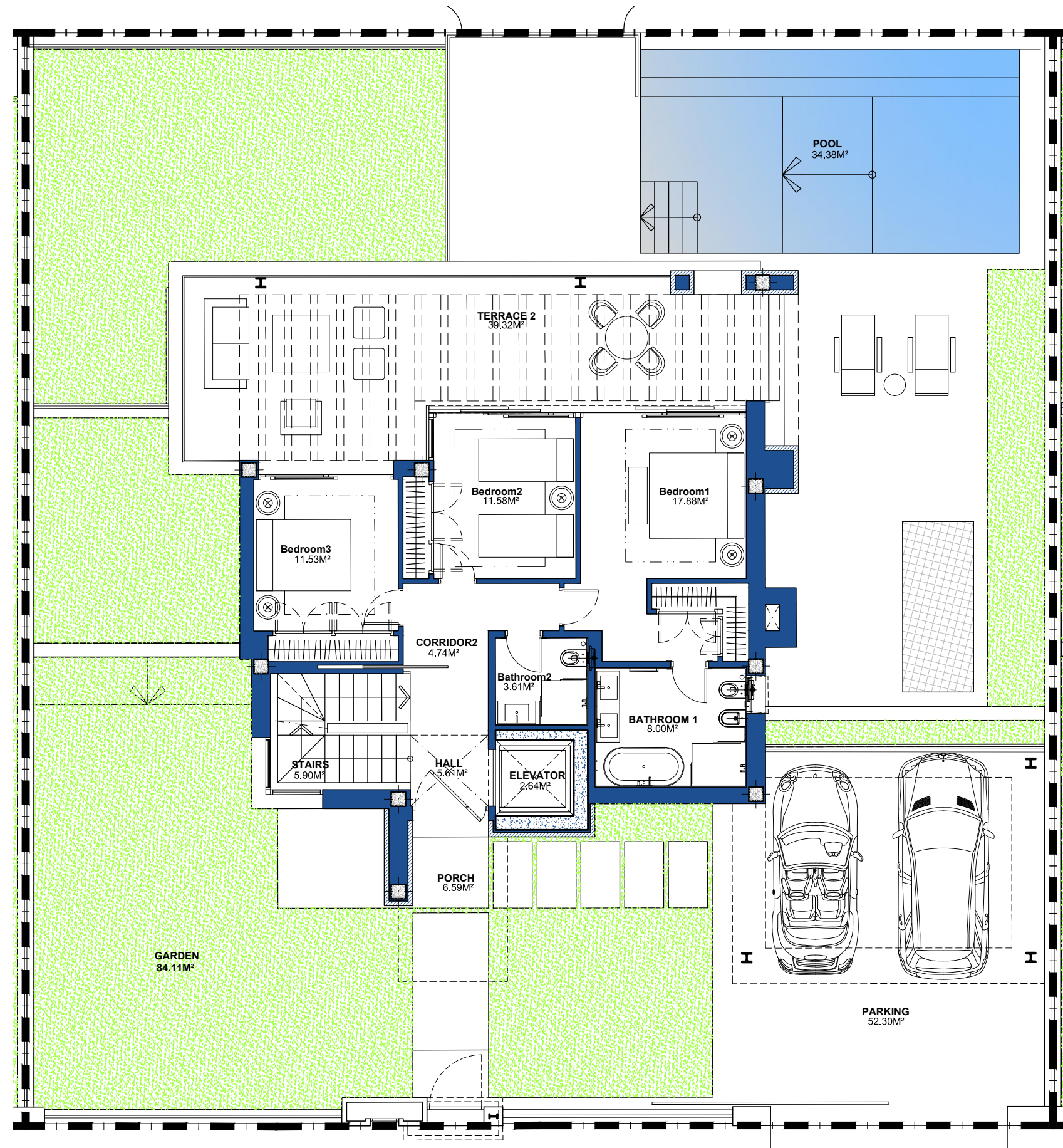
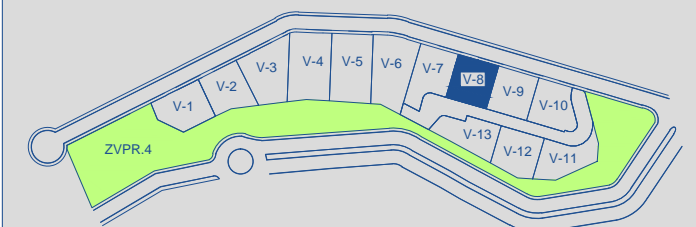


**BUILT AREA** 146,33 M<sup>2</sup>

**APPROXIMATE USEFUL AREAS** M<sup>2</sup>

Bedroom 1	17,88
Bedroom 2	11,58
Bedroom 3	11,53
Bathroom 1	8,00
Bathroom 2	3,61
Other Areas	18,84
Porches and Terraces	45,91
<b>Total</b>	<b>117,35</b>
Parking	52,30
Garden	84,11
<b>Total</b>	<b>253,76</b>

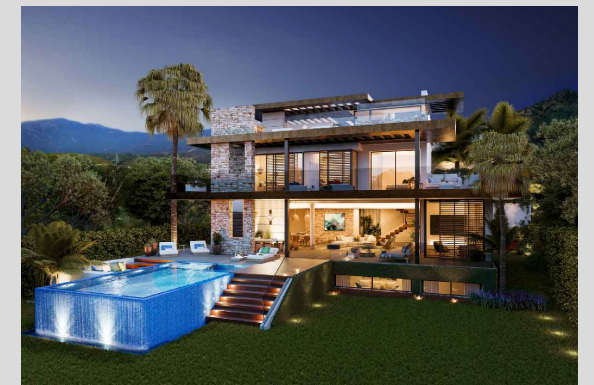
### SITE PLAN



SCALE BAR  
0 0.5 1 2 3M

These images are not contractual but only for illustrative purposes. The images are subject to technical, legal or commercial modifications approved by the project management or the competent authority. The 3D images corresponding to the façades, common elements, and the rest of the spaces are merely indicative and will be subject to verification or modification in the technical projects. The furniture of the 3D images is not included and the equipment of the villas will be indicated in the corresponding building and quality specifications. The energy certification corresponds with the one established in the project in process. All the information and documentation will be provided according to the terms established in the Royal Decree 515/1989 and in the rest of the autonomous or state regulations currently in force that could complement the mentioned decree.

VILLA 08 Solarium

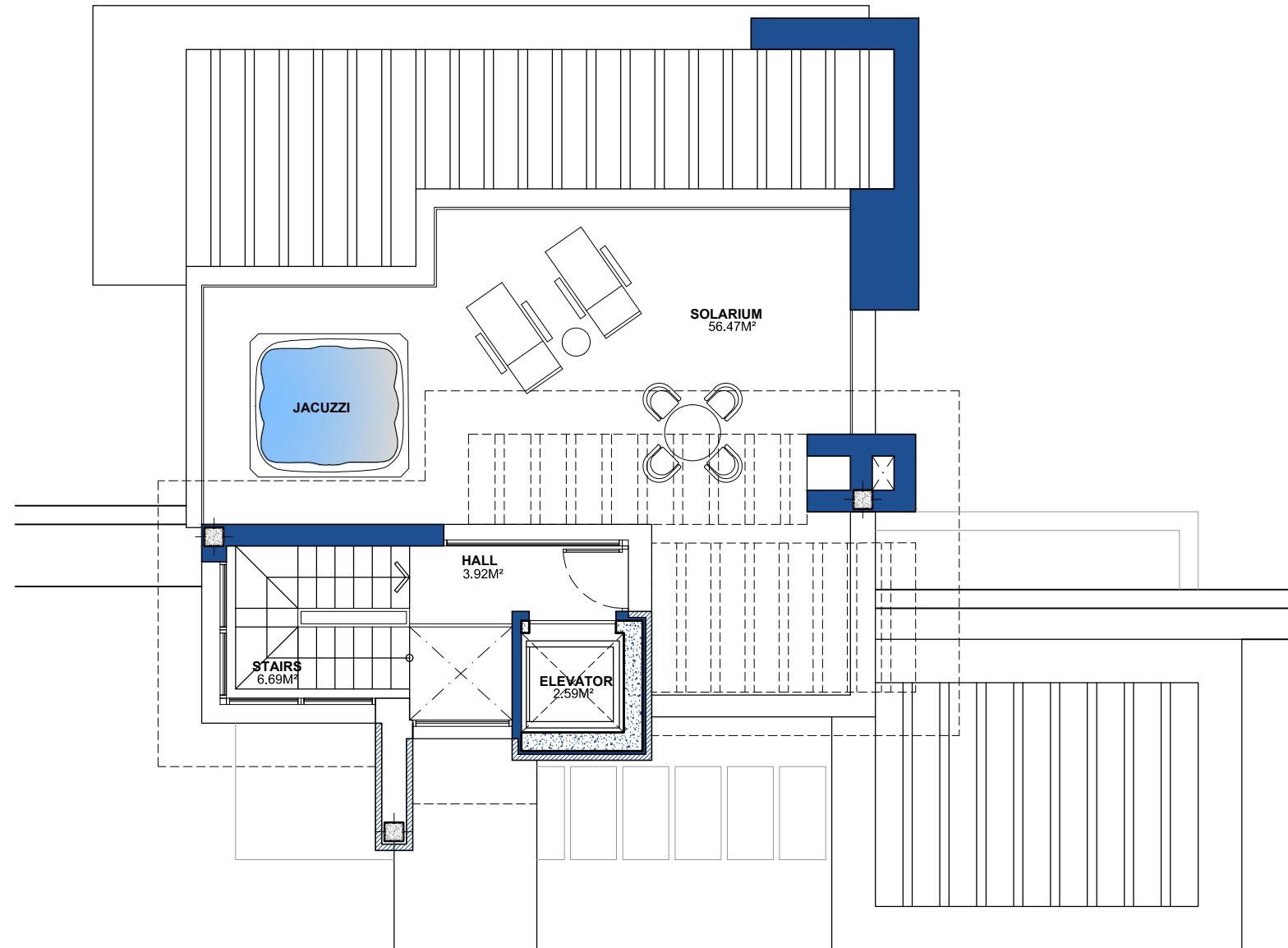
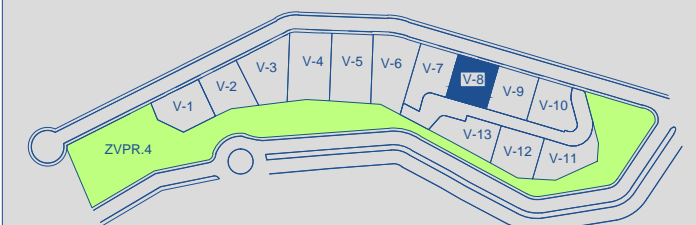


BUILT AREA 92,45 M<sup>2</sup>

APPROXIMATE USEFUL AREAS M<sup>2</sup>

Hall	3,92
Other Areas	9,28
Porches and Terraces	56,47
<b>Total</b>	<b>69,67</b>

SITE PLAN



These images are not contractual but only for illustrative purposes. The images are subject to technical, legal or commercial modifications approved by the project Management or the competent authority. The 3D images corresponding to the façades, common elements, and the rest of the spaces are merely indicative and will be subject to verification or modification in the technical projects. The furniture of the 3D images is not included and the equipment of the villas will be indicated in the corresponding Building and quality specifications. The energy certification corresponds with the one established in the project in process. All the information and documentation will be provided according to the terms established in the Royal Decree 515/1989 and in the rest of the autonomous or state regulations currently in force that could complement the mentioned Decree.