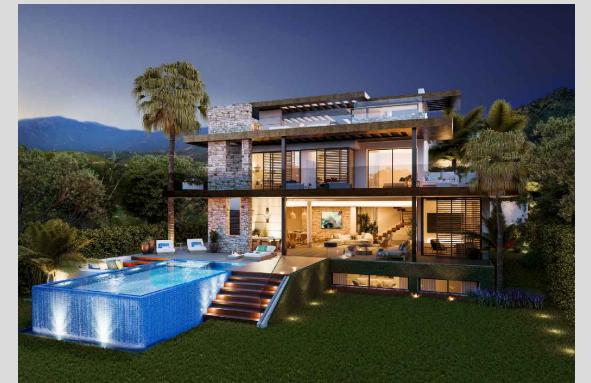


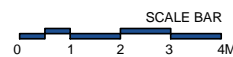
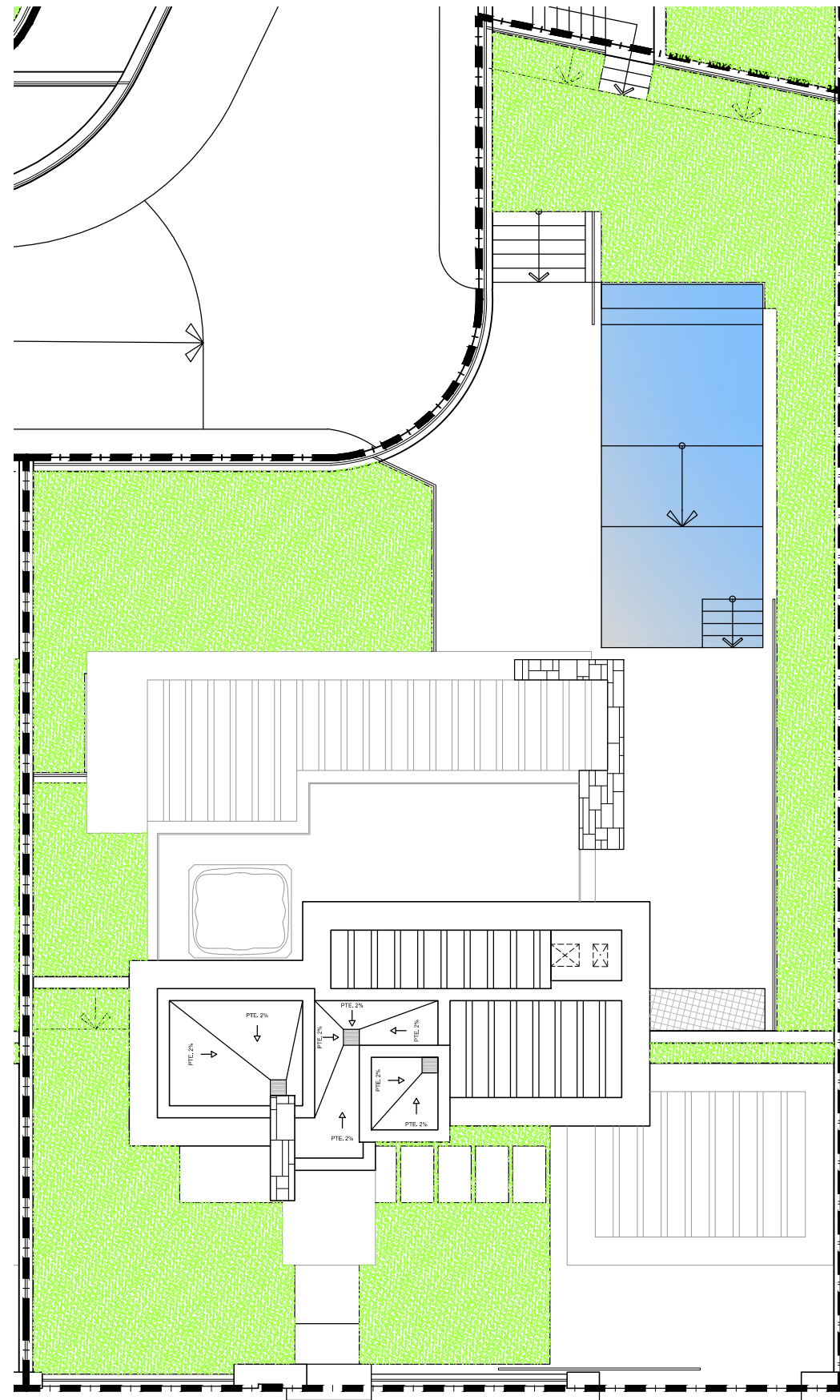
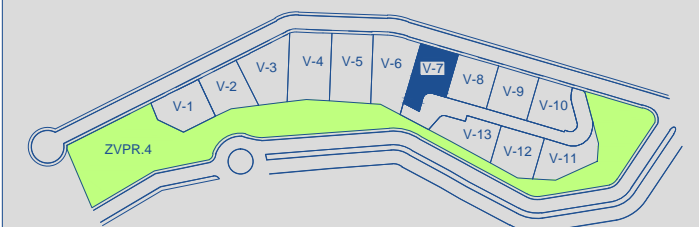
**VILLA 07 Site Plan**



APPROXIMATE AREAS	M <sup>2</sup>
Basement built area	170,47
Ground floor built area	212,69
First floor built area	146,33
Solarium built area	92,45
Parking area	52,45
Pool area	36,00
<b>Total</b>	<b>710,39</b>

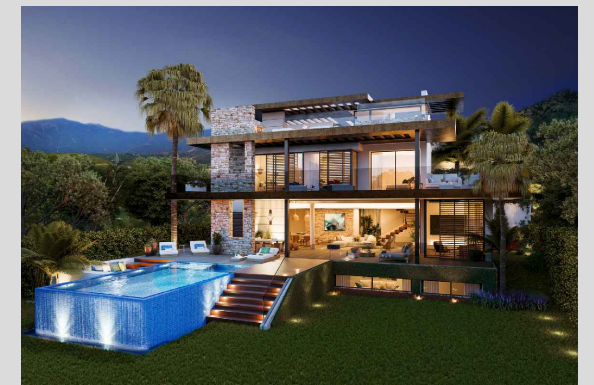
Plot 07 area	558,49
Community green area	5.388,69
<b>Total useful area</b>	<b>340,07</b>

**SITE PLAN** 



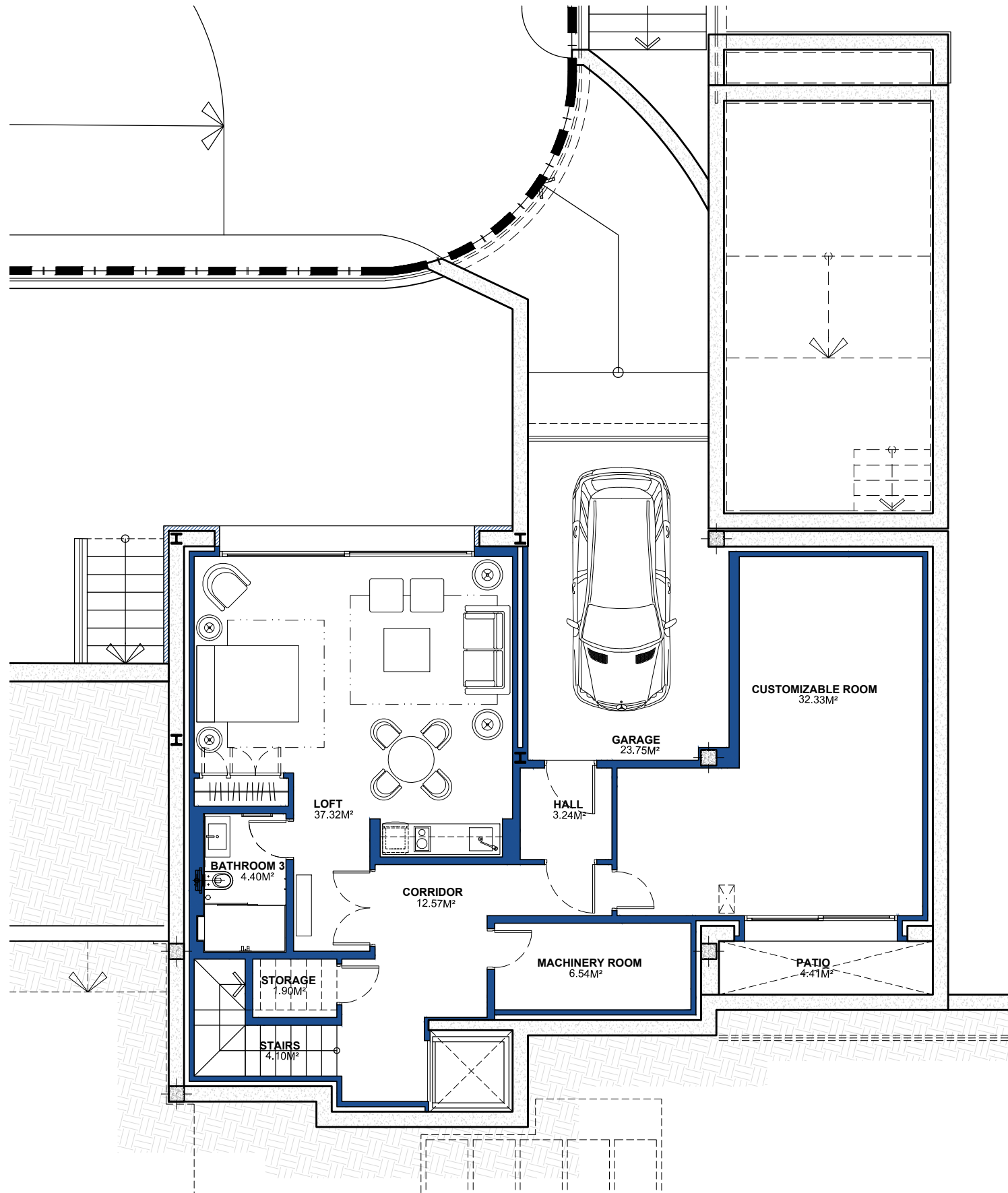
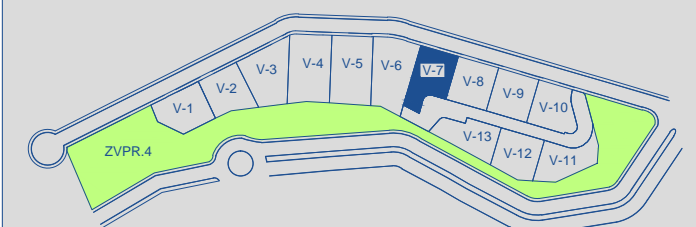
These images are not contractual but only for illustrative purposes. The images are subject to technical, legal or commercial modifications approved by the project management or the competent authority. The 3D images corresponding to the façades, common elements, and the rest of the spaces are merely indicative and will be subject to verification or modification in the technical projects. The furniture of the 3D images is not included and the equipment of the villas will be indicated in the corresponding building and quality specifications. The energy certification corresponds with the one established in the project in process. All the information and documentation will be provided according to the terms established in the Royal Decree 515/1989 and in the rest of the autonomous or state regulations currently in force that could complement the mentioned decree.

## VILLA 07 Basement



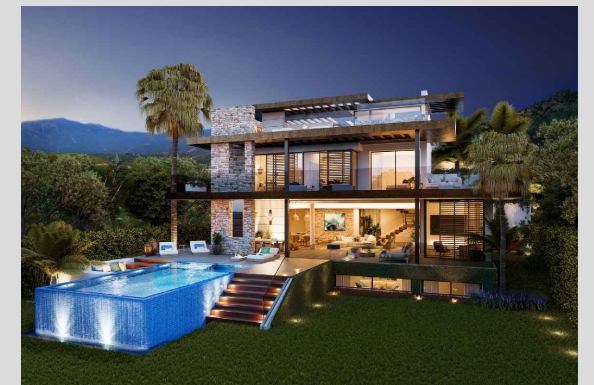
<b>BUILT AREA</b>	<b>170,47 M<sup>2</sup></b>
<b>APPROXIMATE USEFUL AREAS</b>	<b>M<sup>2</sup></b>
Loft	37,32
Customizable Room	32,33
Bathroom 3	4,40
Garage	23,75
Other Areas	28,35
<b>Total</b>	<b>126,15</b>

### SITE PLAN



These images are not contractual but only for illustrative purposes. The images are subject to technical, legal or commercial modifications approved by the project management or the competent authority. The 3D images corresponding to the façades, common elements, and the rest of the spaces are merely indicative and will be subject to verification or modification in the technical projects. The furniture of the 3D images is not included and the equipment of the villas will be indicated in the corresponding building and quality specifications. The energy certification corresponds with the one established in the project in process. All the information and documentation will be provided according to the terms established in the Royal Decree 515/1989 and in the rest of the autonomous or state regulations currently in force that could complement the mentioned decree.

## VILLA 07 Ground Floor

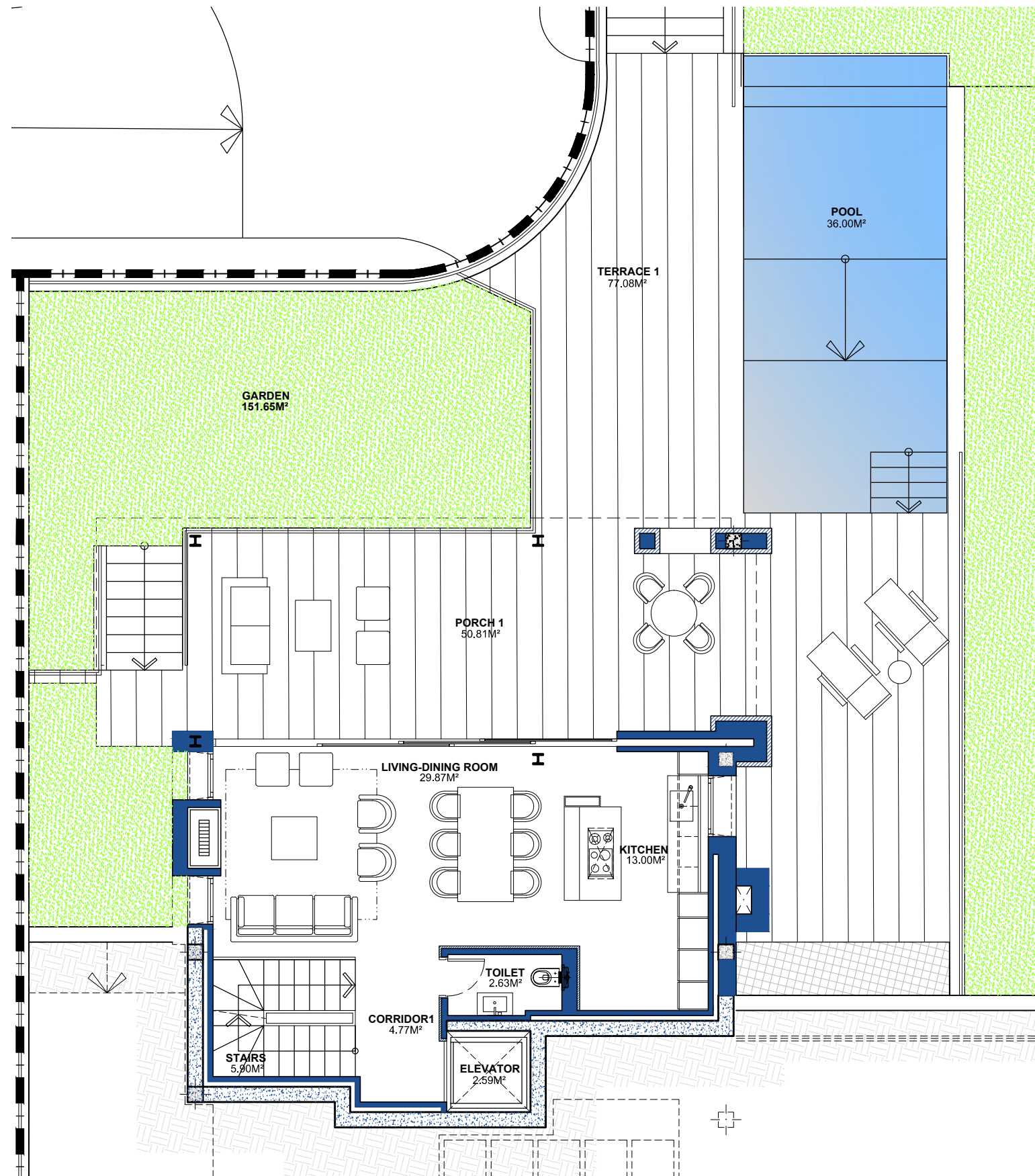
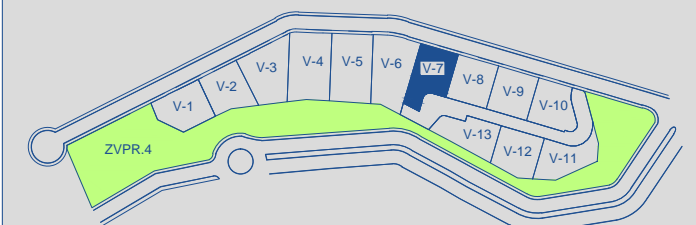


**BUILT AREA** 212,69 M<sup>2</sup>

**APPROXIMATE USEFUL AREAS** M<sup>2</sup>

Living-Dining Room	29,87
Kitchen	13,00
Toilet	2,63
Other Areas	13,26
Porches and Terraces	127,89
<hr/>	
Pool	36,00
Garden	151,65
<b>Total</b>	<b>374,30</b>

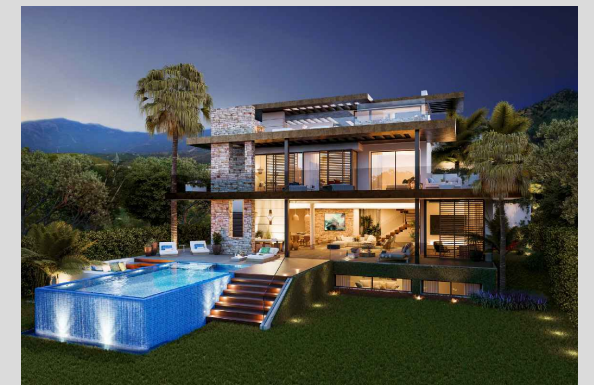
## SITE PLAN



SCALE BAR  
0 0.5 1 2 3M


These images are not contractual but only for illustrative purposes. The images are subject to technical, legal or commercial modifications approved by the project management or the competent authority. The 3D images corresponding to the façades, common elements, and the rest of the spaces are merely indicative and will be subject to verification or modification in the technical projects. The furniture of the 3D images is not included and the equipment of the villas will be indicated in the corresponding building and quality specifications. The energy certification corresponds with the one established in the project in process. All the information and documentation will be provided according to the terms established in the Royal Decree 515/1989 and in the rest of the autonomous or state regulations currently in force that could complement the mentioned decree.

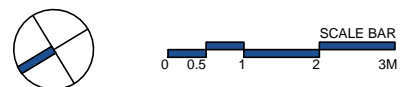
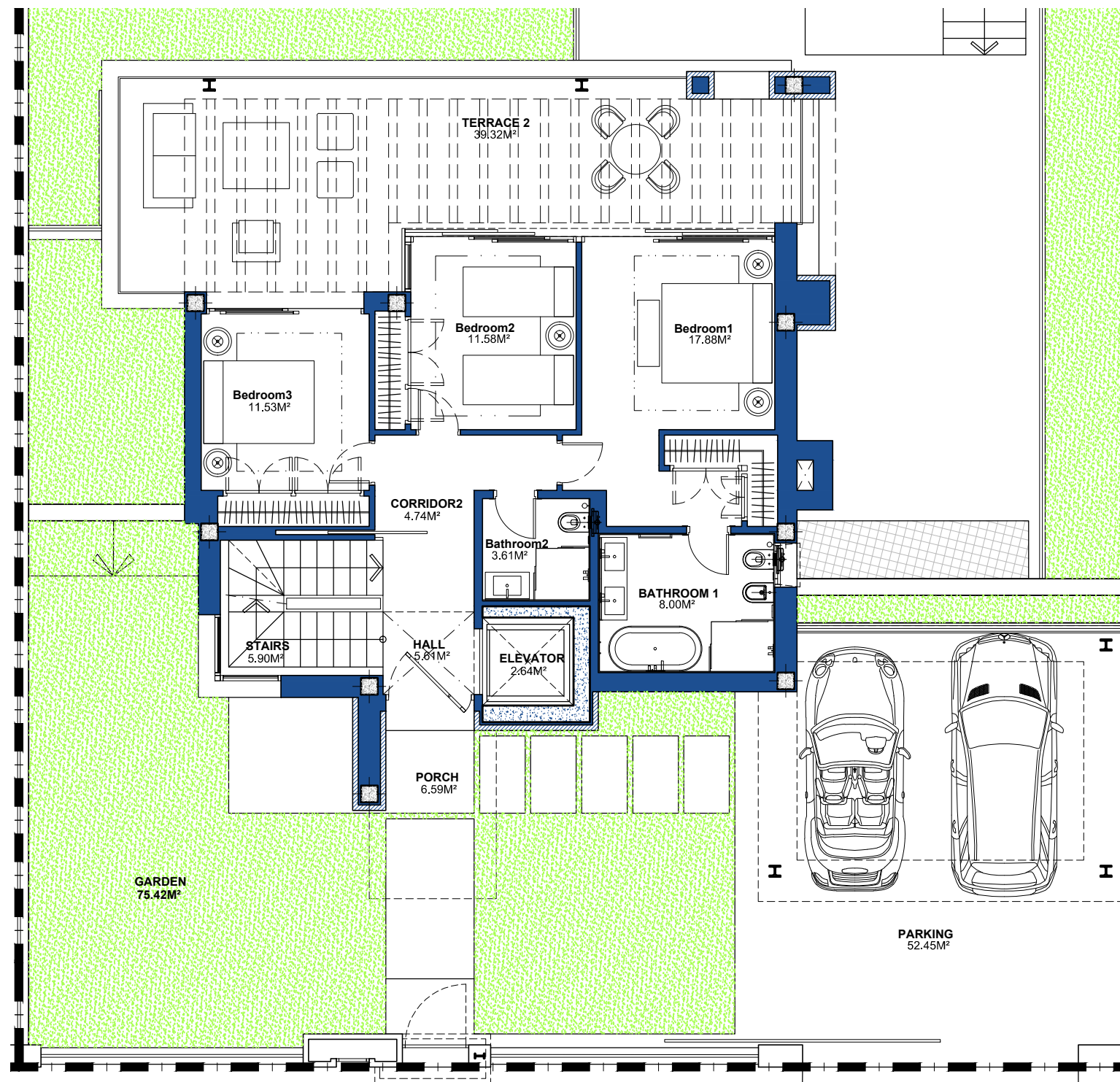
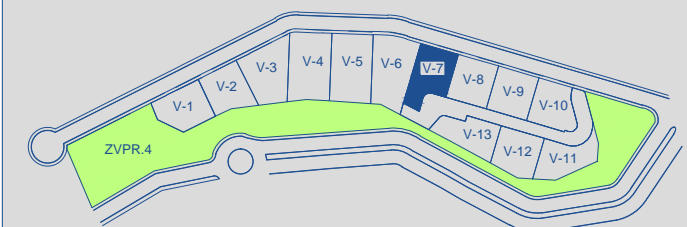
VILLA 07 First Floor



BUILT AREA 146,33 M<sup>2</sup>

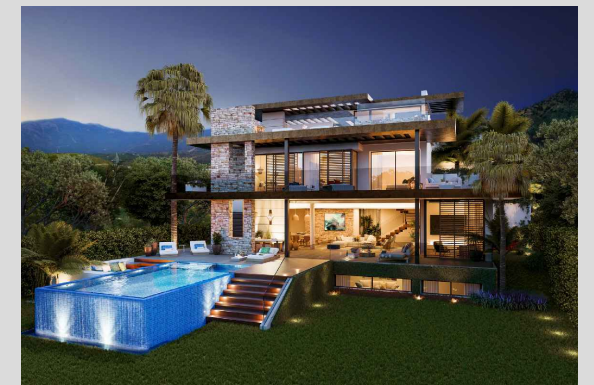
APPROXIMATE USEFUL AREAS	M <sup>2</sup>
Bedroom 1	17,88
Bedroom 2	11,58
Bedroom 3	11,53
Bathroom 1	8,00
Bathroom 2	3,61
Other Areas	18,84
Porches and Terraces	45,91
<b>Total</b>	<b>117,35</b>
Parking	52,45
Garden	75,42
<b>Total</b>	<b>245,22</b>

SITE PLAN 



These images are not contractual but only for illustrative purposes. The images are subject to technical, legal or commercial modifications approved by the project management or the competent authority. The 3D images corresponding to the façades, common elements, and the rest of the spaces are merely indicative and will be subject to verification or modification in the technical projects. The furniture of the 3D images is not included and the equipment of the villas will be indicated in the corresponding building and quality specifications. The energy certification corresponds with the one established in the project in process. All the information and documentation will be provided according to the terms established in the Royal Decree 515/1989 and in the rest of the autonomous or state regulations currently in force that could complement the mentioned decree.


VILLA 07 Solarium

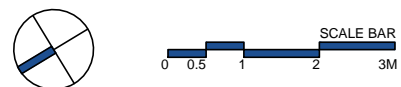
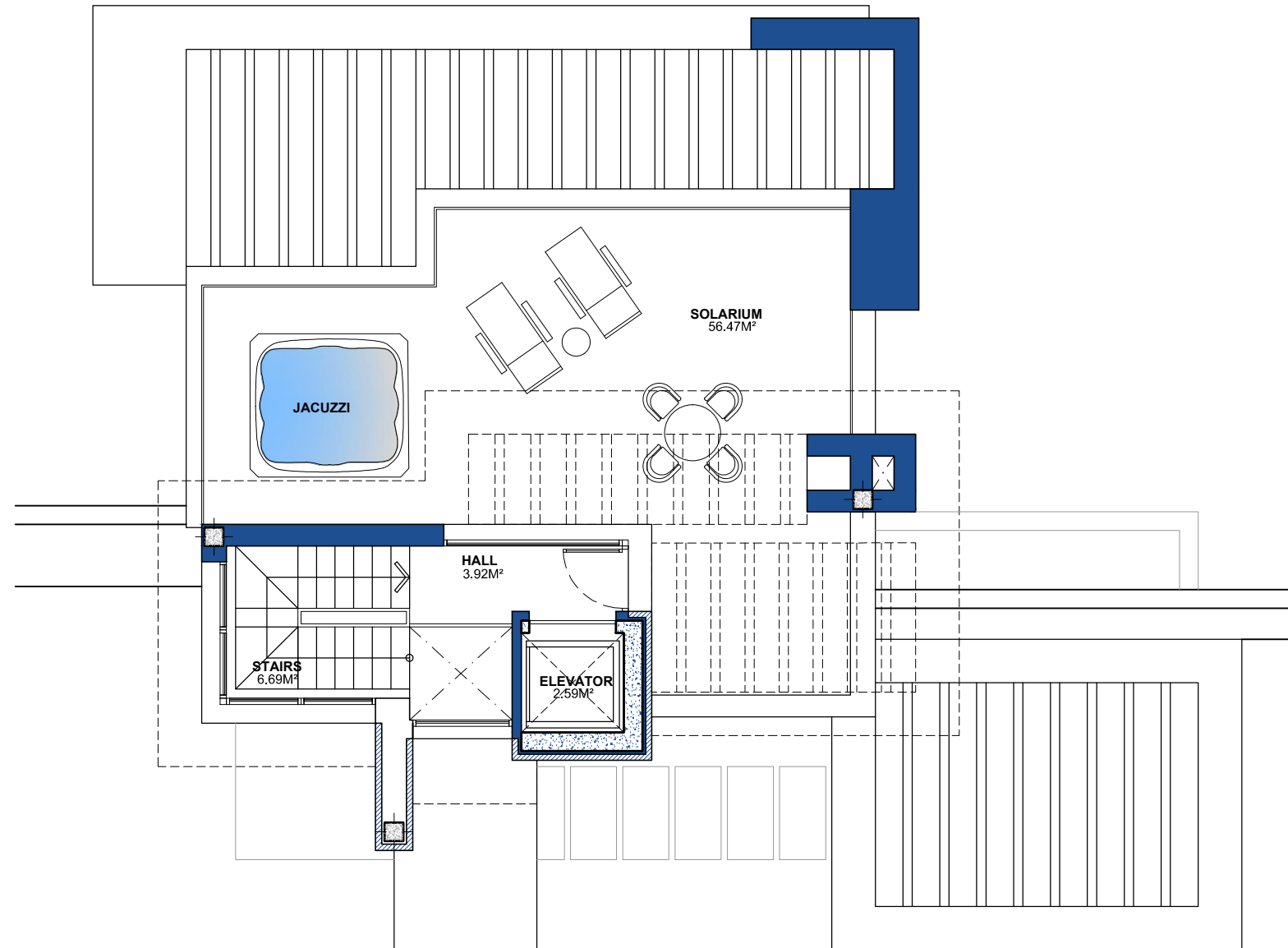
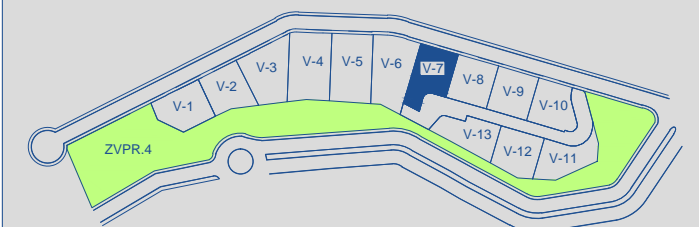


BUILT AREA 92,45 M<sup>2</sup>

APPROXIMATE USEFUL AREAS M<sup>2</sup>

Hall	3,92
Other Areas	9,28
Porches and Terraces	56,47
<b>Total</b>	<b>69,67</b>

SITE PLAN 



These images are not contractual but only for illustrative purposes. The images are subject to technical, legal or commercial modifications approved by the project management or the competent authority. The 3D images corresponding to the façades, common elements, and the rest of the spaces are merely indicative and will be subject to verification or modification in the technical projects. The furniture of the 3D images is not included and the equipment of the villas will be indicated in the corresponding building and quality specifications. The energy certification corresponds with the one established in the project in process. All the information and documentation will be provided according to the terms established in the Royal Decree 515/1989 and in the rest of the autonomous or state regulations currently in force that could complement the mentioned decree.