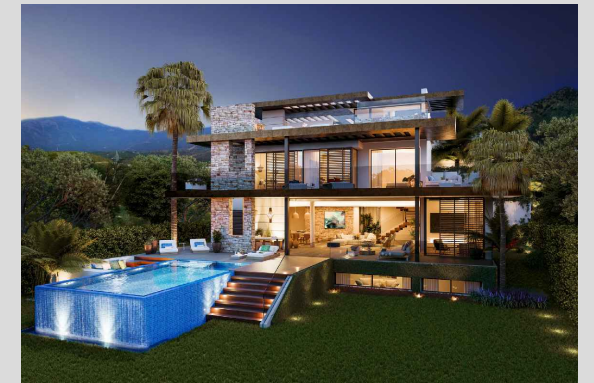


VILLA 06 Site Plan

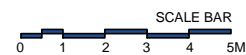
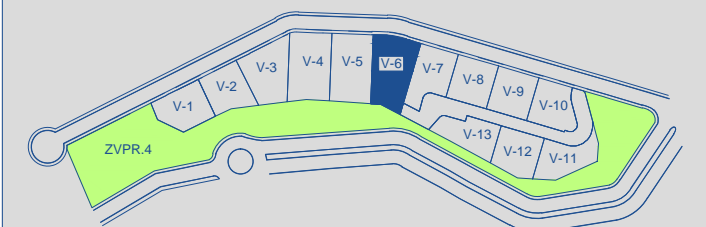


APPROXIMATE AREAS M²

Basement built area	186,24
Ground floor built area	226,69
First floor built area	167,96
Solarium built area	98,71
Parking area	50,82
Pool area	44,23
Total	774,65

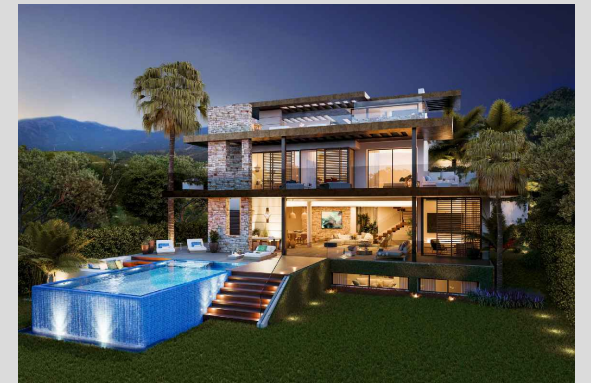
Plot 06 area	756,70
Community green area	5.388,69
Total useful area	351,10

SITE PLAN



These images are not contractual but only for illustrative purposes. The images are subject to technical, legal or commercial modifications approved by the project management or the competent authority. The 3D images corresponding to the façades, common elements, and the rest of the spaces are merely indicative and will be subject to verification or modification in the technical projects. The furniture of the 3D images is not included and the equipment of the villas will be indicated in the corresponding building and quality specifications. The energy certification corresponds with the one established in the project in process. All the information and documentation will be provided according to the terms established in the Royal Decree 515/1989 and in the rest of the autonomous or state regulations currently in force that could complement the mentioned decree.


VILLA 06 Basement

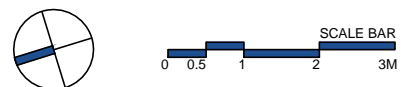
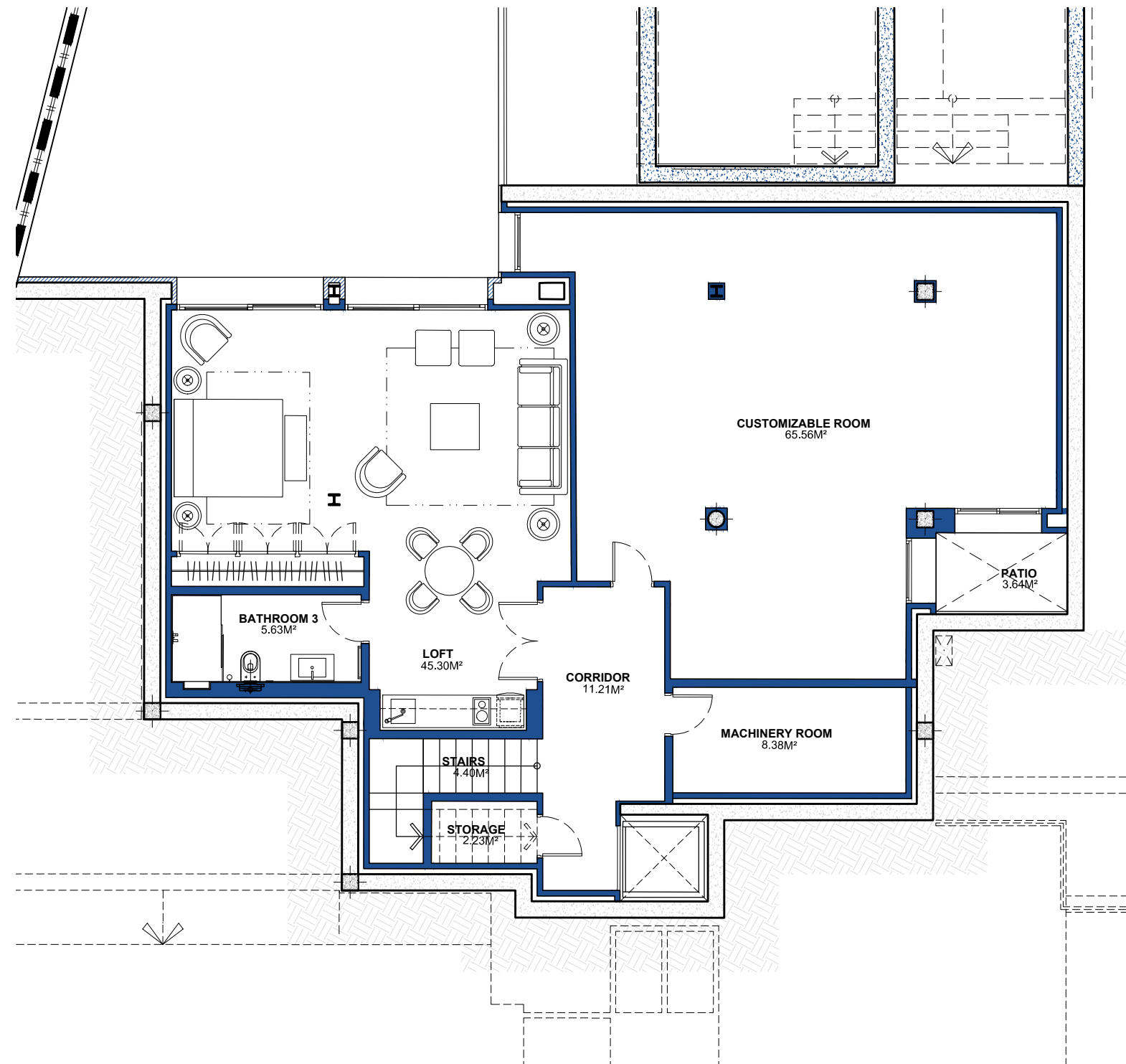
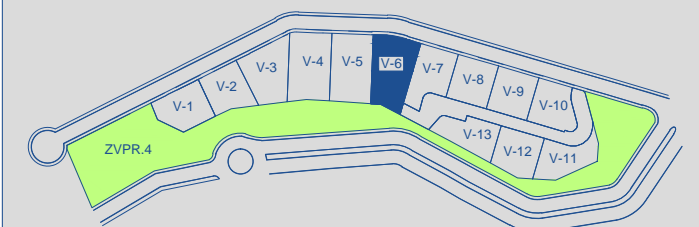


BUILT AREA 186,24 M²

APPROXIMATE USEFUL AREAS M²

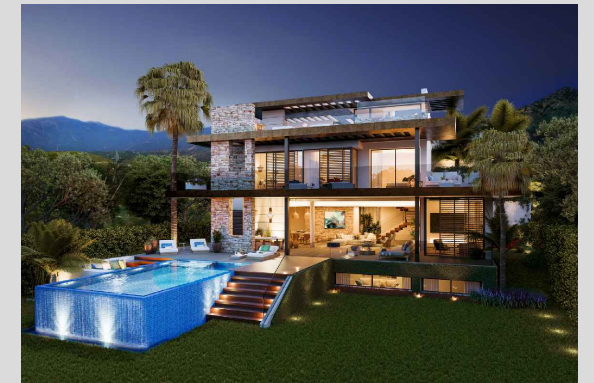
Loft	45,30
Customizable Room	65,56
Bathroom 3	5,63
Other Areas	26,22
Total	142,71

SITE PLAN 



These images are not contractual but only for illustrative purposes. The images are subject to technical, legal or commercial modifications approved by the project management or the competent authority. The 3D images corresponding to the façades, common elements, and the rest of the spaces are merely indicative and will be subject to verification or modification in the technical projects. The furniture of the 3D images is not included and the equipment of the villas will be indicated in the corresponding building and quality specifications. The energy certification corresponds with the one established in the project in process. All the information and documentation will be provided according to the terms established in the Royal Decree 515/1989 and in the rest of the autonomous or state regulations currently in force that could complement the mentioned decree.

VILLA 06 Ground Floor

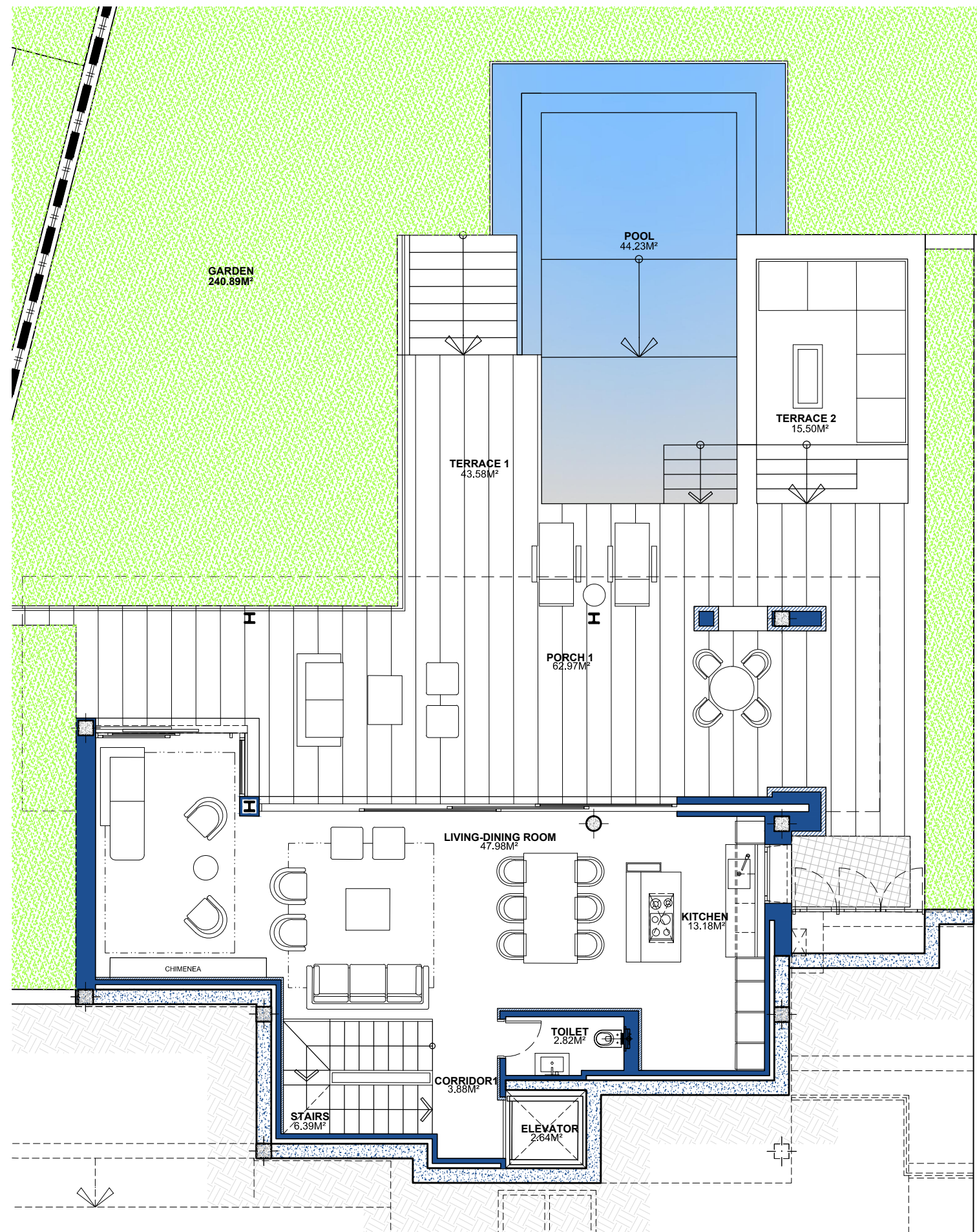
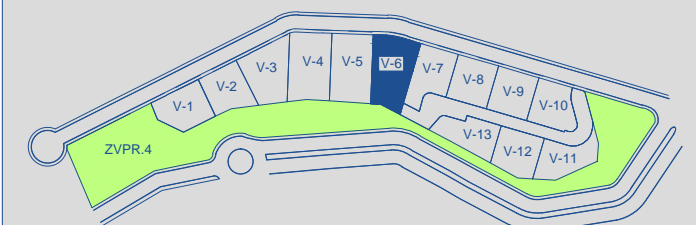


BUILT AREA 226,69 M²

APPROXIMATE USEFUL AREAS M²

Living-Dining Room	47,98
Kitchen	13,18
Toilet	2,82
Other Areas	12,91
Porches and Terraces	122,05
Total	198,94
Pool	44,23
Garden	240,89
Total	484,06

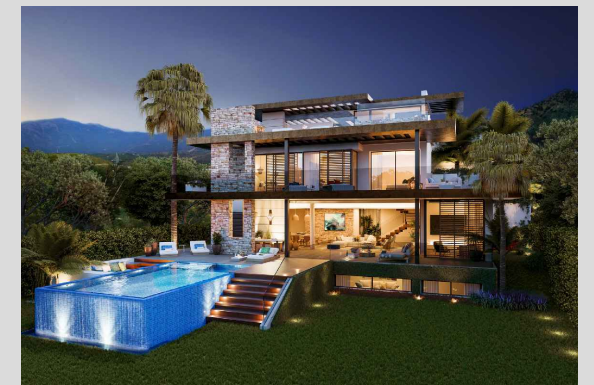
SITE PLAN



SCALE BAR
0 0.5 1 2 3M

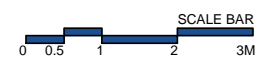
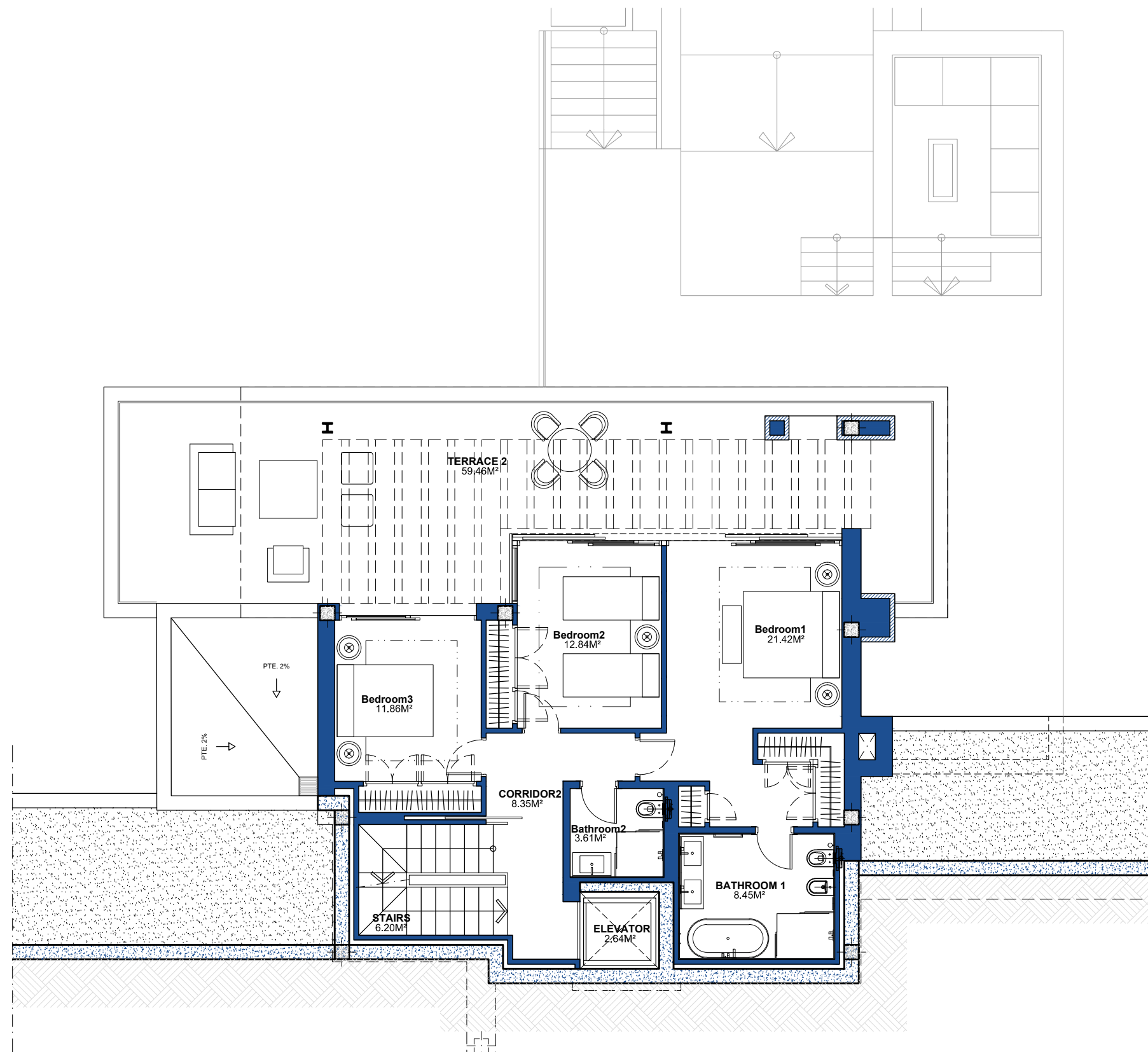
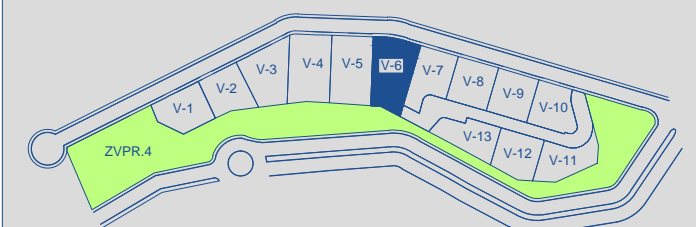
These images are not contractual but only for illustrative purposes. The images are subject to technical, legal or commercial modifications approved by the project management or the competent authority. The 3D images corresponding to the façades, common elements, and the rest of the spaces are merely indicative and will be subject to verification or modification in the technical projects. The furniture of the 3D images is not included and the equipment of the villas will be indicated in the corresponding building and quality specifications. The energy certification corresponds with the one established in the project in process. All the information and documentation will be provided according to the terms established in the Royal Decree 515/1989 and in the rest of the autonomous or state regulations currently in force that could complement the mentioned decree.

VILLA 06 First Floor



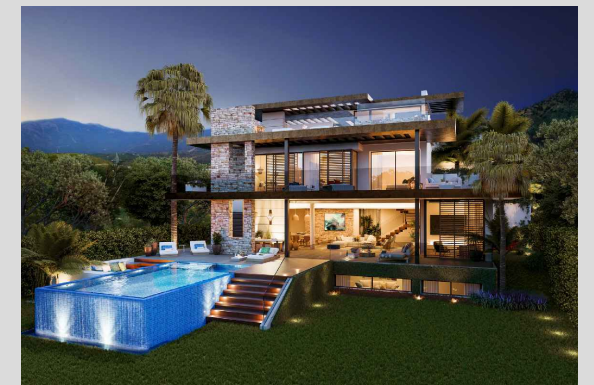
BUILT AREA	167,96 M ²
APPROXIMATE USEFUL AREAS	M ²
Bedroom 1	21,42
Bedroom 2	12,84
Bedroom 3	11,86
Bathroom 1	8,45
Bathroom 2	3,61
Other Areas	17,19
Porches and Terraces	59,46
Total	134,83

SITE PLAN



These images are not contractual but only for illustrative purposes. The images are subject to technical, legal or commercial modifications approved by the project management or the competent authority. The 3D images corresponding to the façades, common elements, and the rest of the spaces are merely indicative and will be subject to verification or modification in the technical projects. The furniture of the 3D images is not included and the equipment of the villas will be indicated in the corresponding building and quality specifications. The energy certification corresponds with the one established in the project in process. All the information and documentation will be provided according to the terms established in the Royal Decree 515/1989 and in the rest of the autonomous or state regulations currently in force that could complement the mentioned decree.

VILLA 06 Solarium

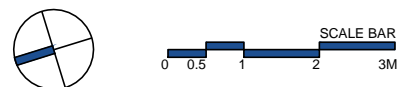
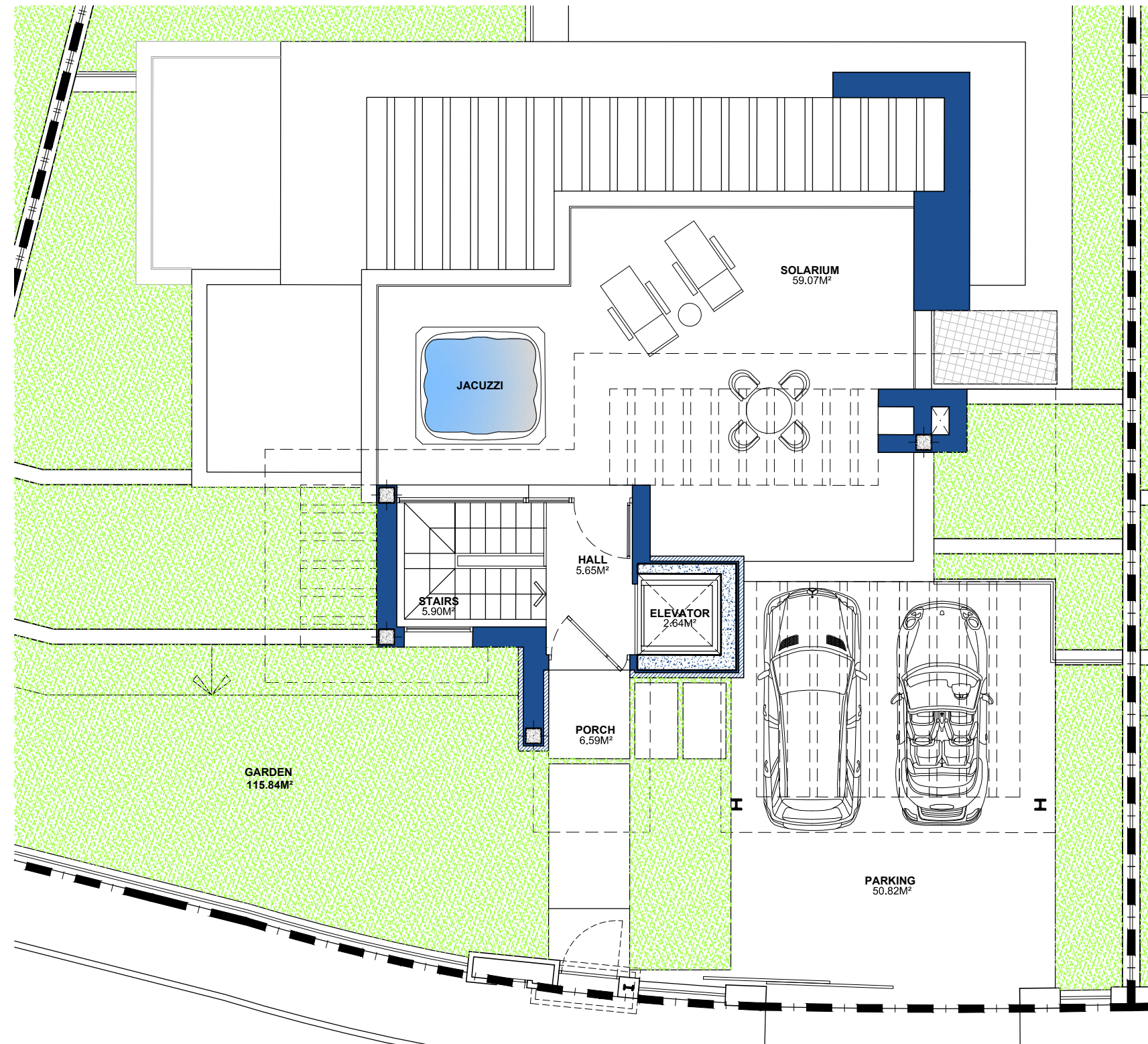
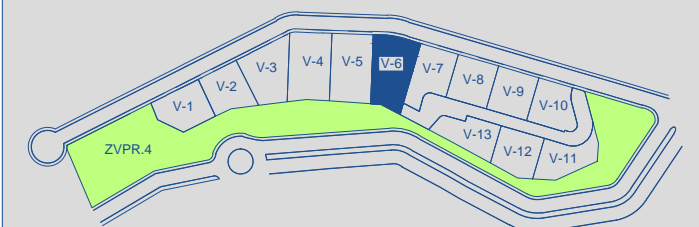


BUILT AREA 98,71 M²

APPROXIMATE USEFUL AREAS M²

Hall	5,69
Other Areas	8,54
Porches and Terraces	65,66
Parking	79,85
Garden	50,82
Total	115,84
	246,51

SITE PLAN 



These images are not contractual but only for illustrative purposes. The images are subject to technical, legal or commercial modifications approved by the project management or the competent authority. The 3D images corresponding to the façades, common elements, and the rest of the spaces are merely indicative and will be subject to verification or modification in the technical projects. The furniture of the 3D images is not included and the equipment of the villas will be indicated in the corresponding building and quality specifications. The energy certification corresponds with the one established in the project in process. All the information and documentation will be provided according to the terms established in the Royal Decree 515/1989 and in the rest of the autonomous or state regulations currently in force that could complement the mentioned decree.