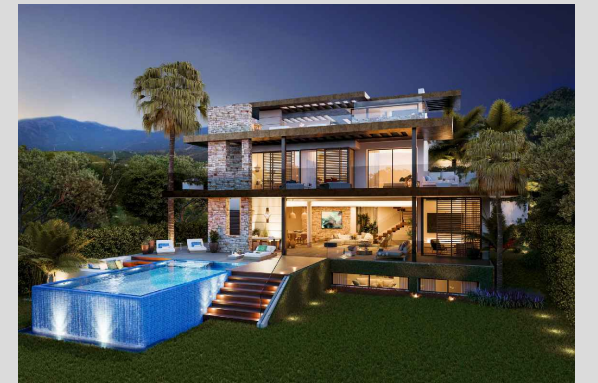


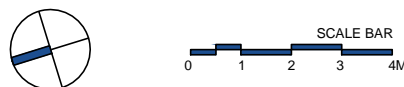
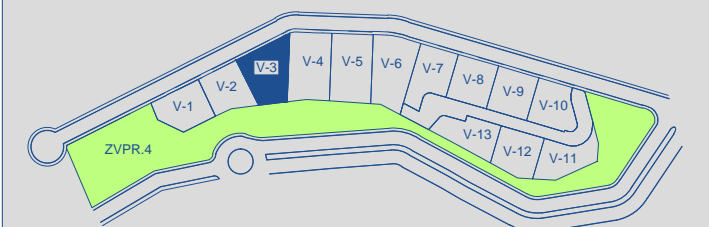
VILLA 03 Site Plan



APPROXIMATE AREAS	M ²
Basement built area	190,52
Ground floor built area	206,43
First floor built area	167,96
Solarium built area	98,71
Parking area	79,40
Pool area	43,65
Total	786,67

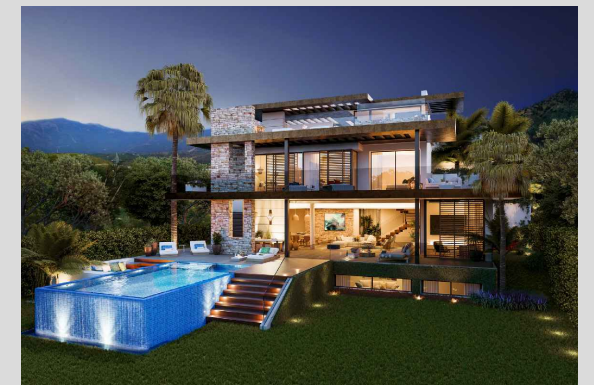
Plot 03 area	667,61
Community green area	5.388,69
Total useful area	255,59

SITE PLAN



These images are not contractual but only for illustrative purposes. The images are subject to technical, legal or commercial modifications approved by the project management or the competent authority. The 3D images corresponding to the façades, common elements, and the rest of the spaces are merely indicative and will be subject to verification or modification in the technical projects. The furniture of the 3D images is not included and the equipment of the villas will be indicated in the corresponding building and quality specifications. The energy certification corresponds with the one established in the project in process. All the information and documentation will be provided according to the terms established in the Royal Decree 515/1989 and in the rest of the autonomous or state regulations currently in force that could complement the mentioned decree.

VILLA 03 Basement

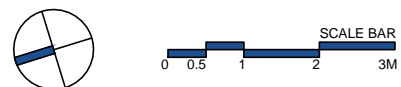
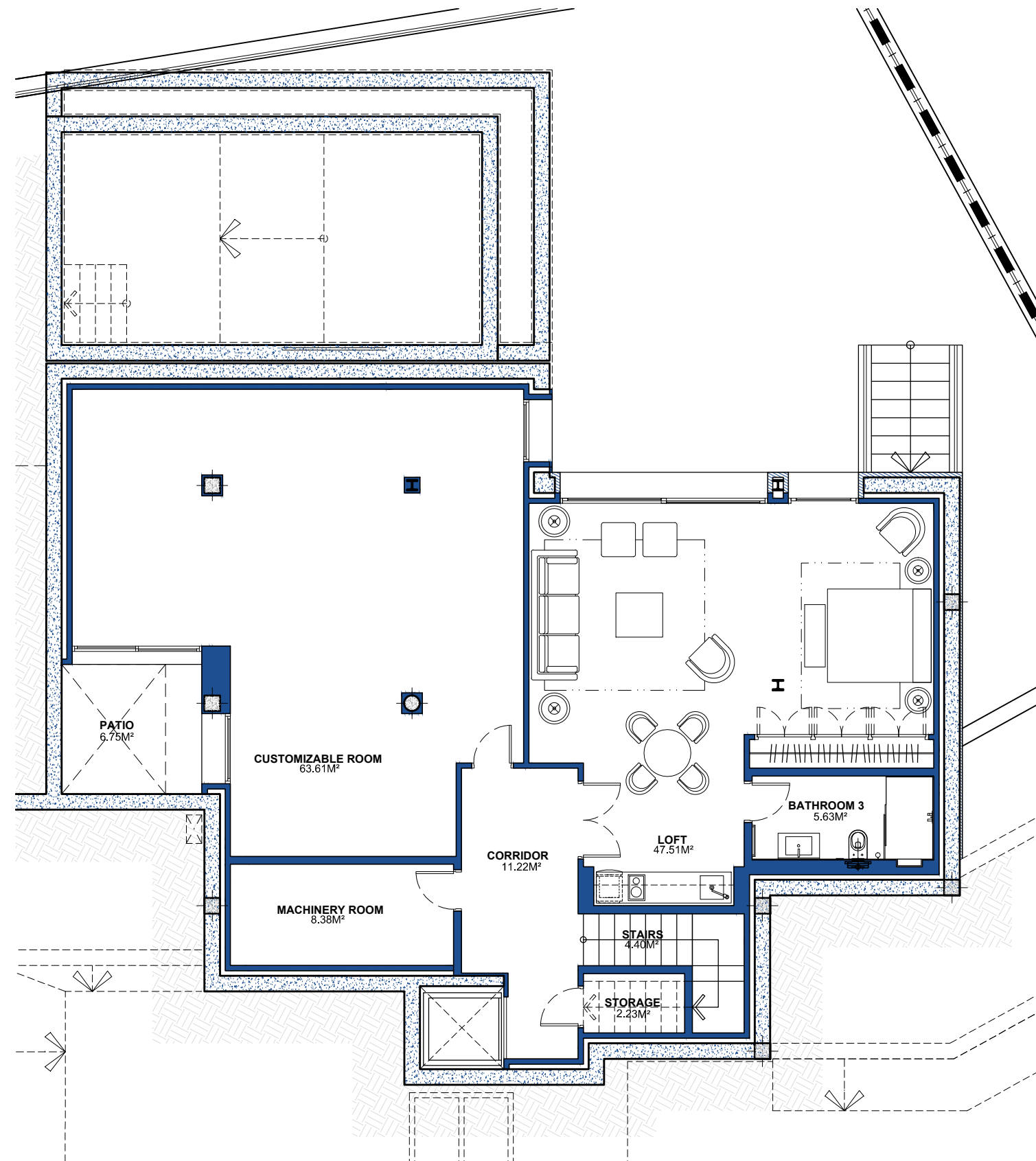
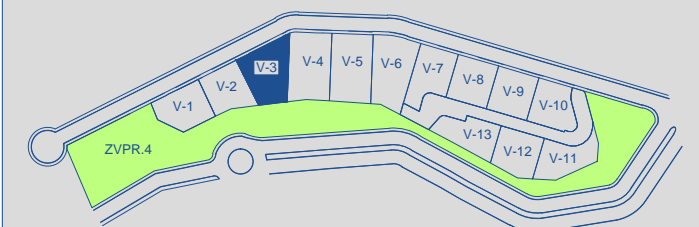


BUILT AREA 190,52 M²

APPROXIMATE USEFUL AREAS M²

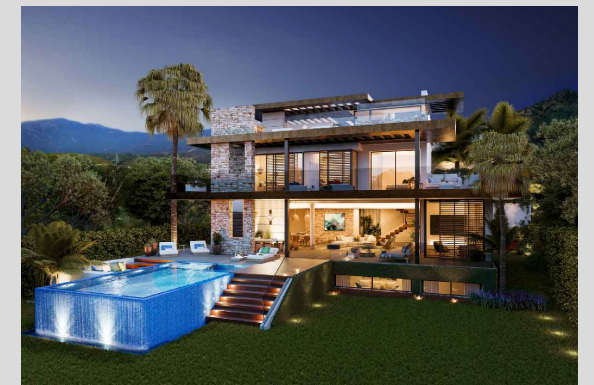
Loft	47,51
Customizable Room	63,61
Bathroom 3	5,63
Other Areas	26,23
Total	142,98

SITE PLAN



These images are not contractual but only for illustrative purposes. The images are subject to technical, legal or commercial modifications approved by the project management or the competent authority. The 3D images corresponding to the façades, common elements, and the rest of the spaces are merely indicative and will be subject to verification or modification in the technical projects. The furniture of the 3D images is not included and the equipment of the villas will be indicated in the corresponding building and quality specifications. The energy certification corresponds with the one established in the project in process. All the information and documentation will be provided according to the terms established in the Royal Decree 515/1989 and in the rest of the autonomous or state regulations currently in force that could complement the mentioned decree.

VILLA 03 Ground Floor

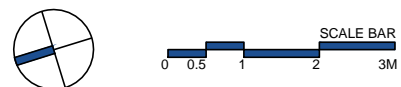
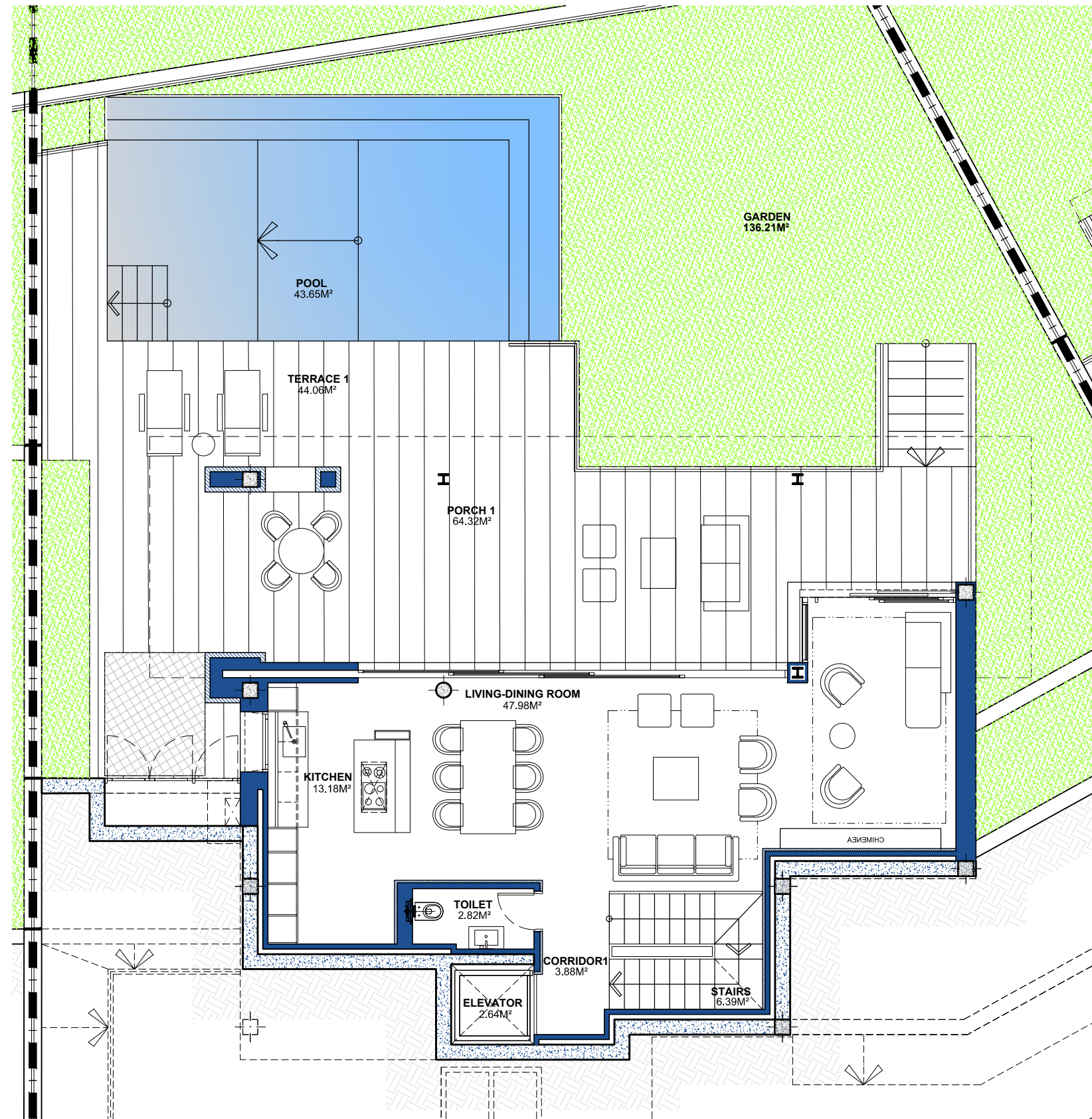
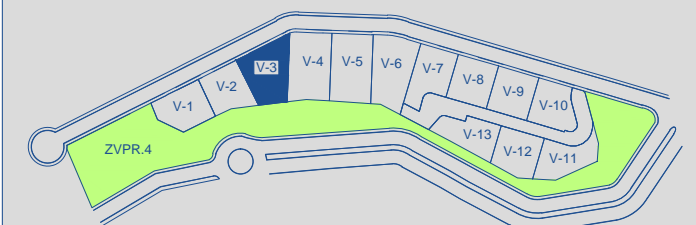


BUILT AREA 206,43 M²

APPROXIMATE USEFUL AREAS M²

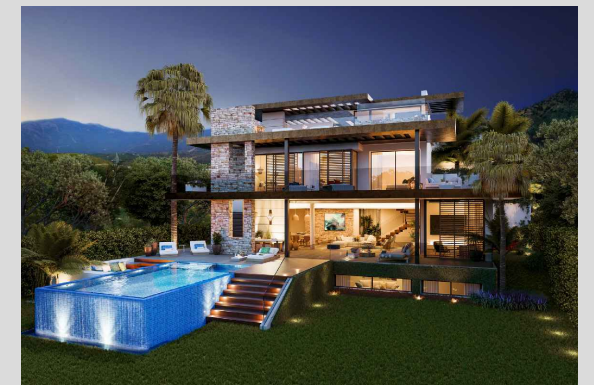
Living-Dining Room	47,98
Kitchen	13,18
Toilet	2,82
Other Areas	12,91
Porches and Terraces	108,38
Total	185,27
Pool	43,65
Garden	136,21
Total	365,13

SITE PLAN



These images are not contractual but only for illustrative purposes. The images are subject to technical, legal or commercial modifications approved by the project management or the competent authority. The 3D images corresponding to the façades, common elements, and the rest of the spaces are merely indicative and will be subject to verification or modification in the technical projects. The furniture of the 3D images is not included and the equipment of the villas will be indicated in the corresponding building and quality specifications. The energy certification corresponds with the one established in the project in process. All the information and documentation will be provided according to the terms established in the Royal Decree 515/1989 and in the rest of the autonomous or state regulations currently in force that could complement the mentioned decree.

VILLA 03 First Floor

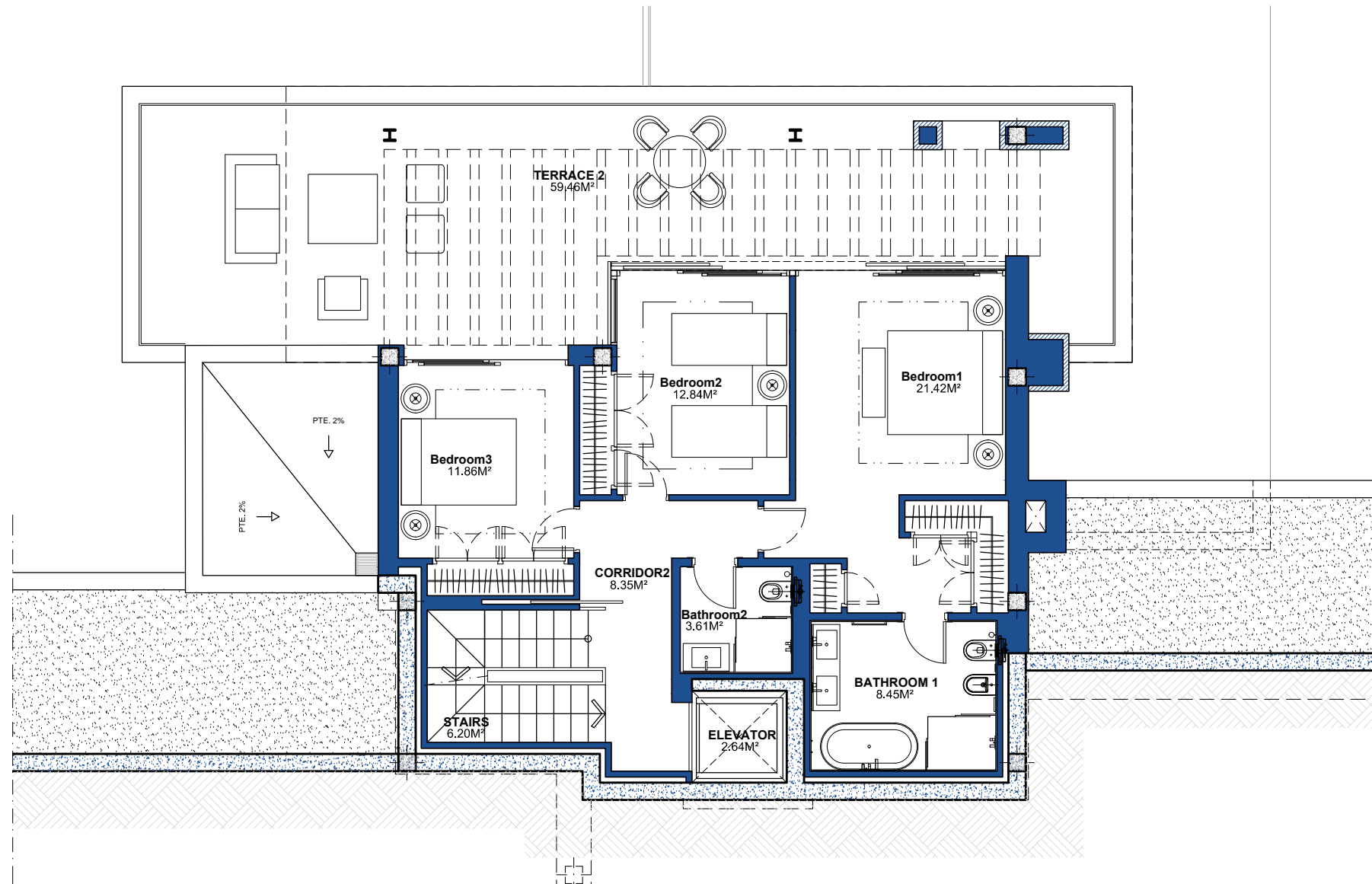
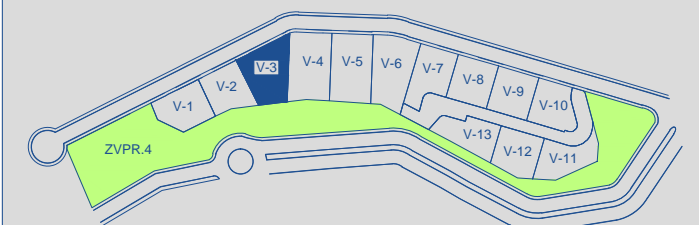


BUILT AREA 167,96 M²

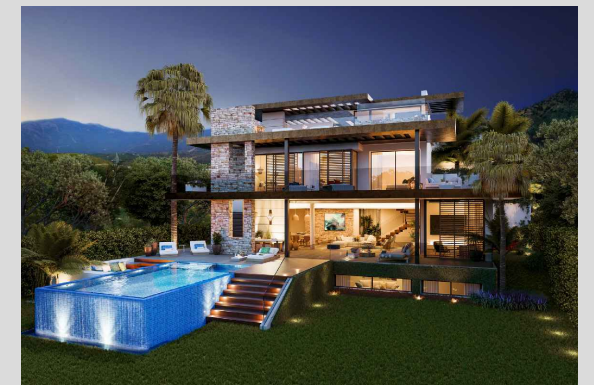
APPROXIMATE USEFUL AREAS M²

Bedroom 1	21,42
Bedroom 2	12,84
Bedroom 3	11,86
Bathroom 1	8,45
Bathroom 2	3,61
Other Areas	17,19
Porches and Terraces	59,46
Total	134,83

SITE PLAN



VILLA 03 Solarium

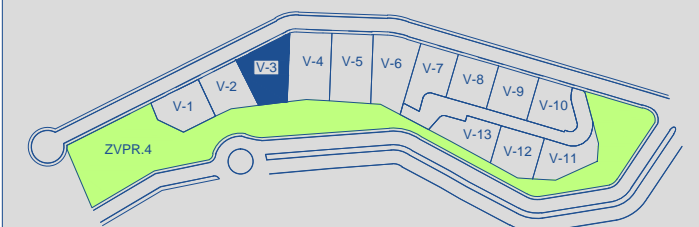


BUILT AREA 98,71 M²

APPROXIMATE USEFUL AREAS M²

Hall	5,65
Other Areas	8,54
Porches and Terraces	65,66
Parking	79,40
Garden	125,99
Total	285,24

SITE PLAN



These images are not contractual but only for illustrative purposes. The images are subject to technical, legal or commercial modifications approved by the project management or the competent authority. The 3D images corresponding to the façades, common elements, and the rest of the spaces are merely indicative and will be subject to verification or modification in the technical projects. The furniture of the 3D images is not included and the equipment of the villas will be indicated in the corresponding building and quality specifications. The energy certification corresponds with the one established in the project in process. All the information and documentation will be provided according to the terms established in the Royal Decree 515/1989 and in the rest of the autonomous or state regulations currently in force that could complement the mentioned decree.