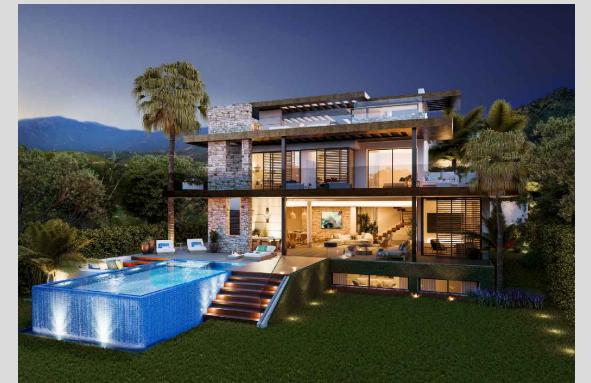


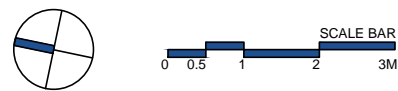
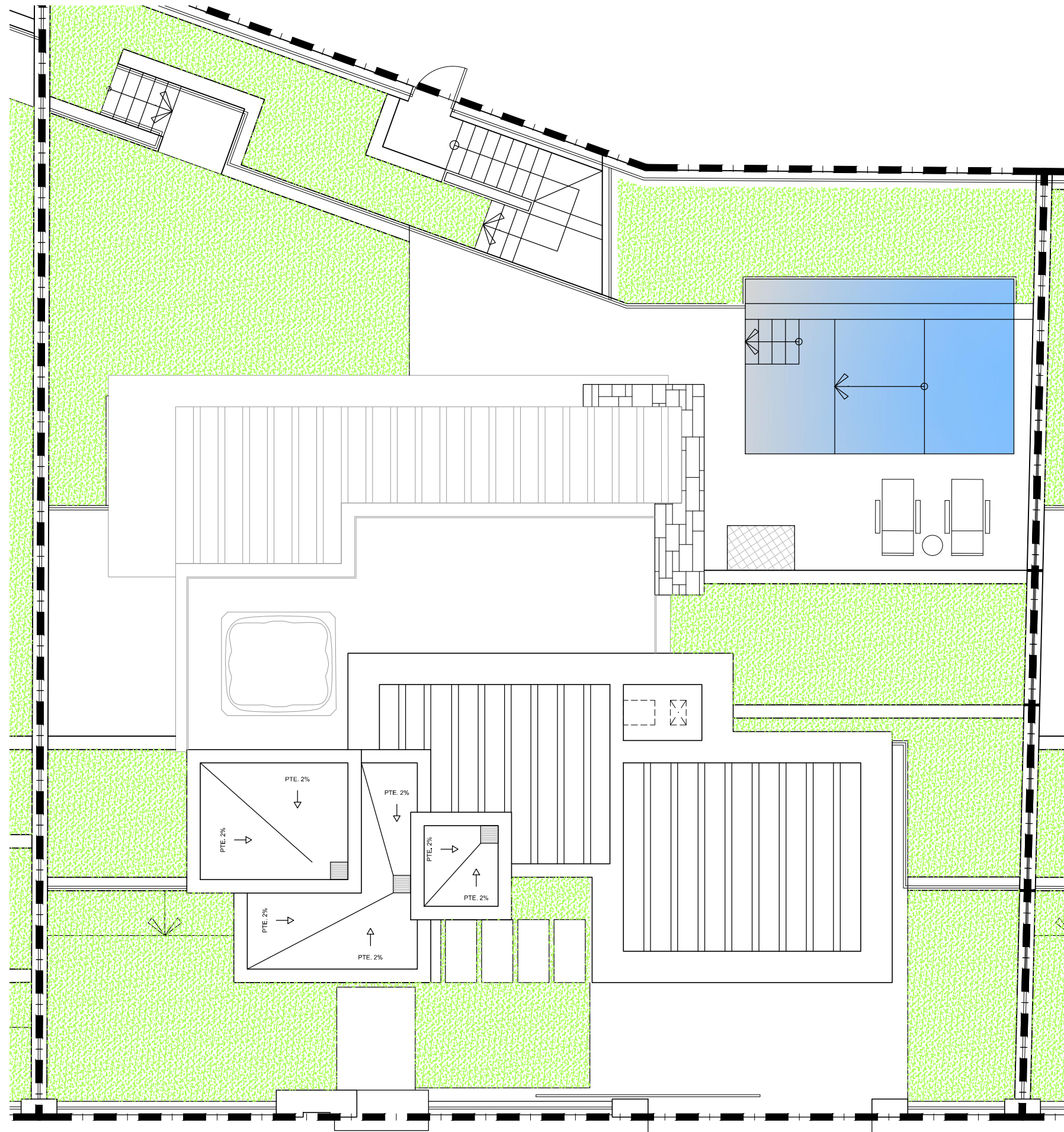
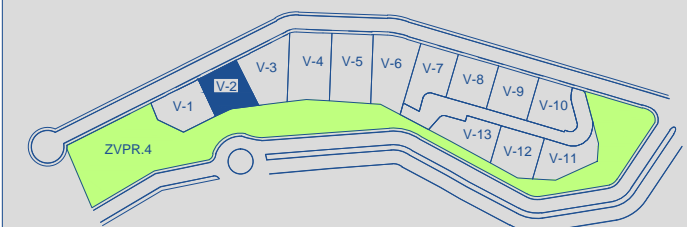
VILLA 02 Site Plan



APPROXIMATE AREAS	M ²
Basement built area	133,00
Ground floor built area	185,77
First floor built area	138,06
Solarium built area	92,80
Parking area	55,58
Pool area	23,40
Total	628,61

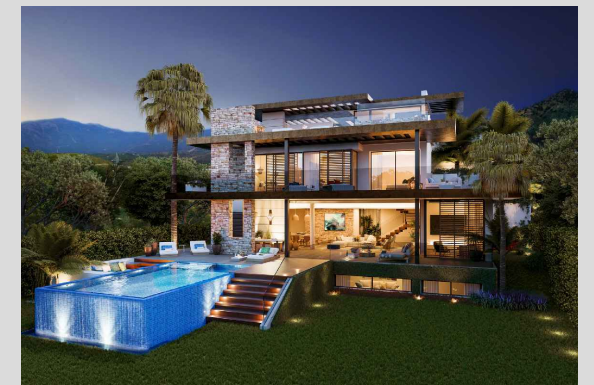
Plot 02 area	501,99
Community green area	5.388,69
Total useful area	265,11

SITE PLAN 



These images are not contractual but only for illustrative purposes. The images are subject to technical, legal or commercial modifications approved by the project Management or the competent authority. The 3D images corresponding to the façades, common elements, and the rest of the spaces are merely indicative and will be subject to verification or modification in the technical projects. The furniture of the 3D images is not included and the equipment of the villas will be indicated in the corresponding Building and quality specifications. The energy certification corresponds with the one established in the project in process. All the information and documentation will be provided according to the terms established in the Royal Decree 515/1989 and in the rest of the autonomous or state regulations currently in force that could complement the mentioned Decree.

VILLA 02 Basement

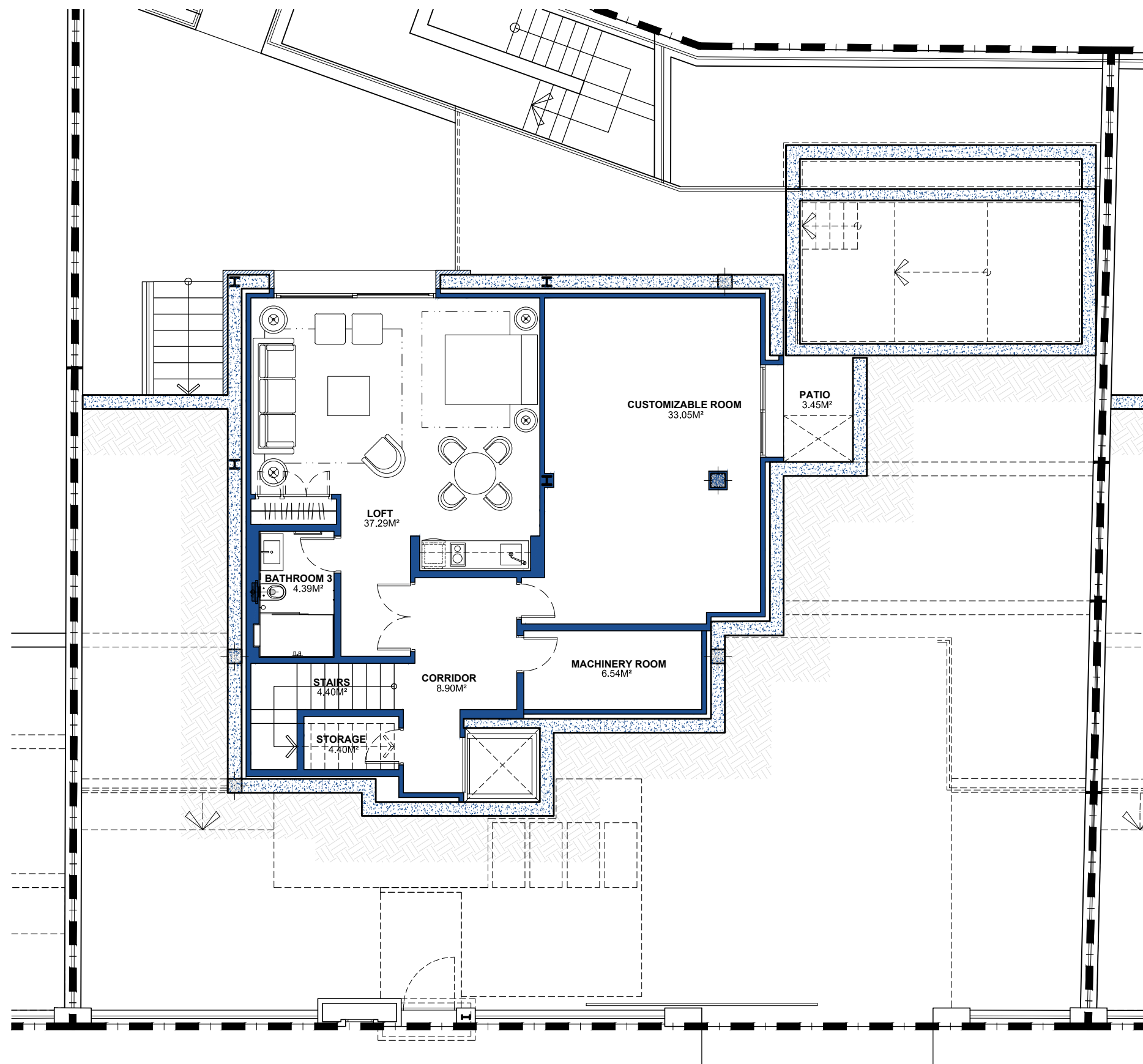
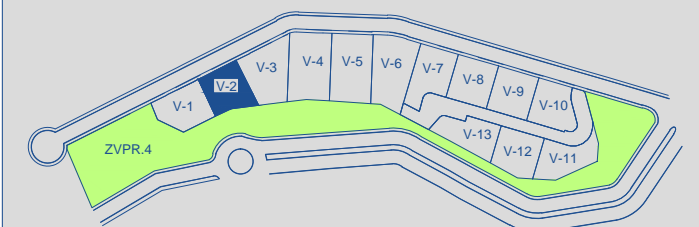


BUILT AREA 133,00 M²

APPROXIMATE USEFUL AREAS M²

Loft	37,29
Customizable Room	33,05
Bathroom 3	4,39
Other Areas	22,20
Total	96,93

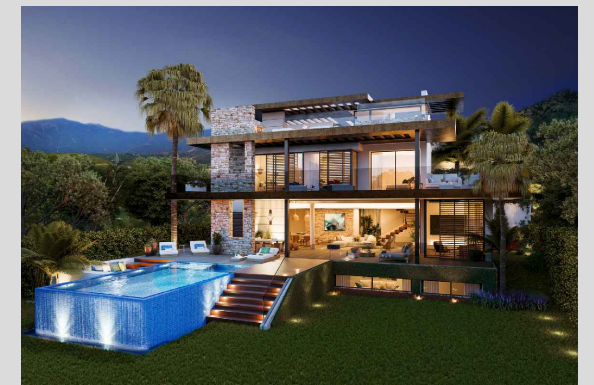
SITE PLAN



SCALE BAR
0 0.5 1 2 3M

These images are not contractual but only for illustrative purposes. The images are subject to technical, legal or commercial modifications approved by the project management or the competent authority. The 3D images corresponding to the façades, common elements, and the rest of the spaces are merely indicative and will be subject to verification or modification in the technical projects. The furniture of the 3D images is not included and the equipment of the villas will be indicated in the corresponding building and quality specifications. The energy certification corresponds with the one established in the project in process. All the information and documentation will be provided according to the terms established in the Royal Decree 515/1989 and in the rest of the autonomous or state regulations currently in force that could complement the mentioned decree.

VILLA 02 Ground Floor

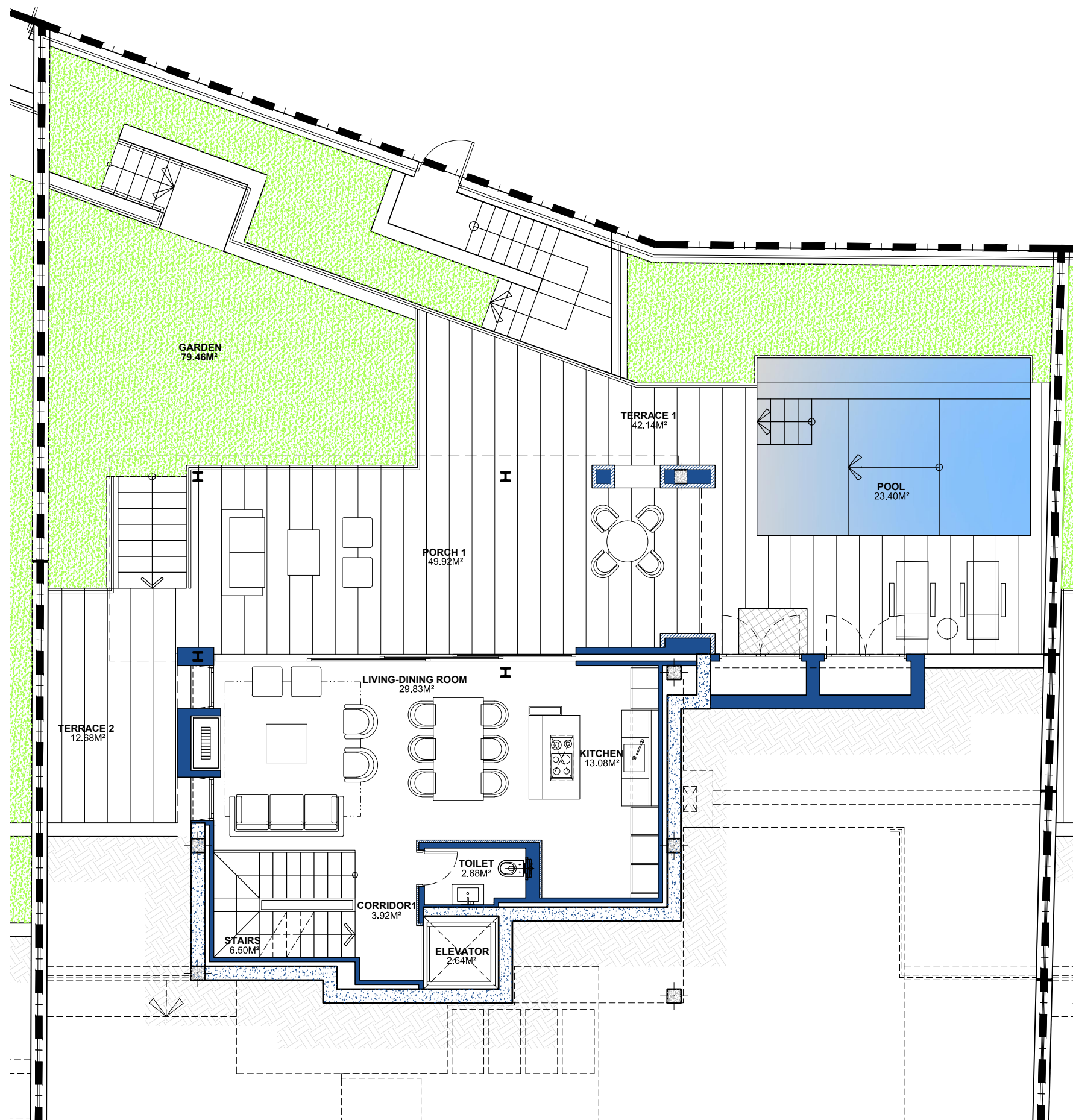
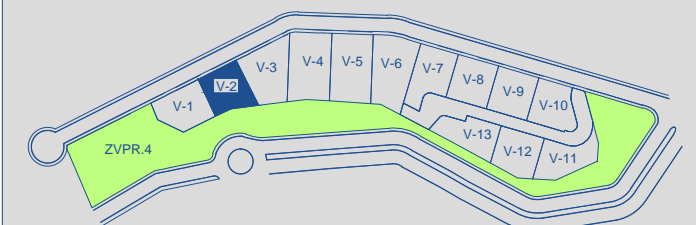


BUILT AREA 185,77 M²

APPROXIMATE USEFUL AREAS M²

Living-Dining Room	29,83
Kitchen	13,08
Toilet	2,68
Other Areas	12,76
Porches and Terraces	104,74
<hr/>	
Pool	23,40
Garden	79,46
Total	266,25

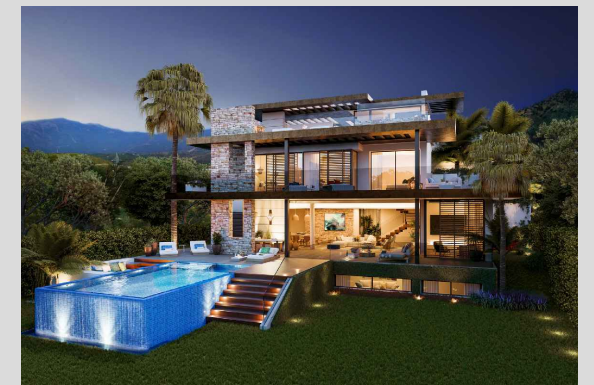
SITE PLAN



SCALE BAR
0 0.5 1 2 3M

These images are not contractual but only for illustrative purposes. The images are subject to technical, legal or commercial modifications approved by the project management or the competent authority. The 3D images corresponding to the façades, common elements, and the rest of the spaces are merely indicative and will be subject to verification or modification in the technical projects. The furniture of the 3D images is not included and the equipment of the villas will be indicated in the corresponding building and quality specifications. The energy certification corresponds with the one established in the project in process. All the information and documentation will be provided according to the terms established in the Royal Decree 515/1989 and in the rest of the autonomous or state regulations currently in force that could complement the mentioned decree.

VILLA 02 First Floor

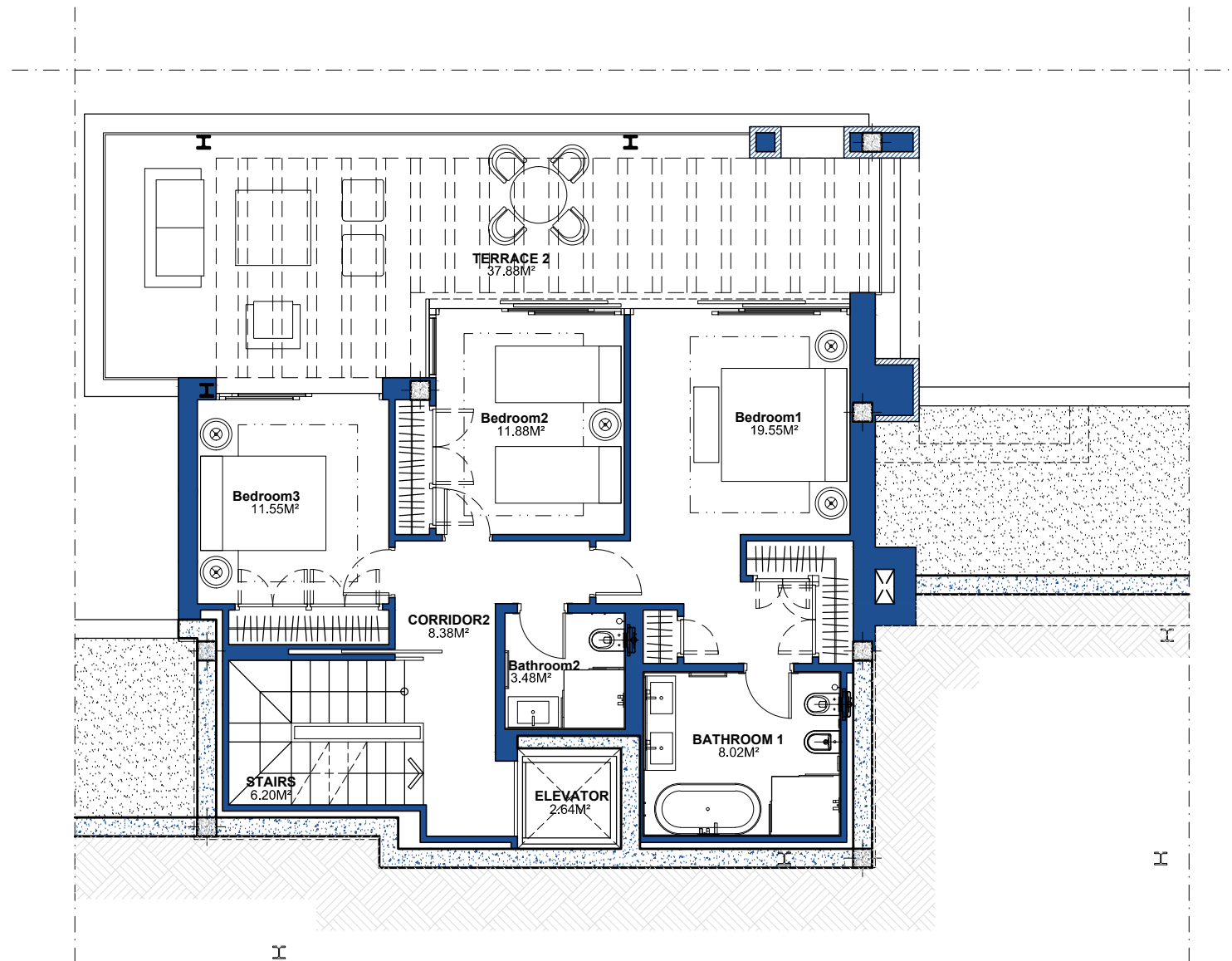
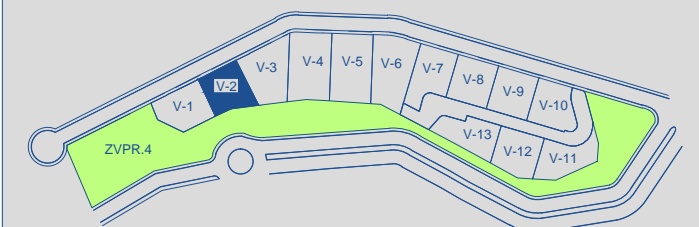


BUILT AREA 138,06 M²

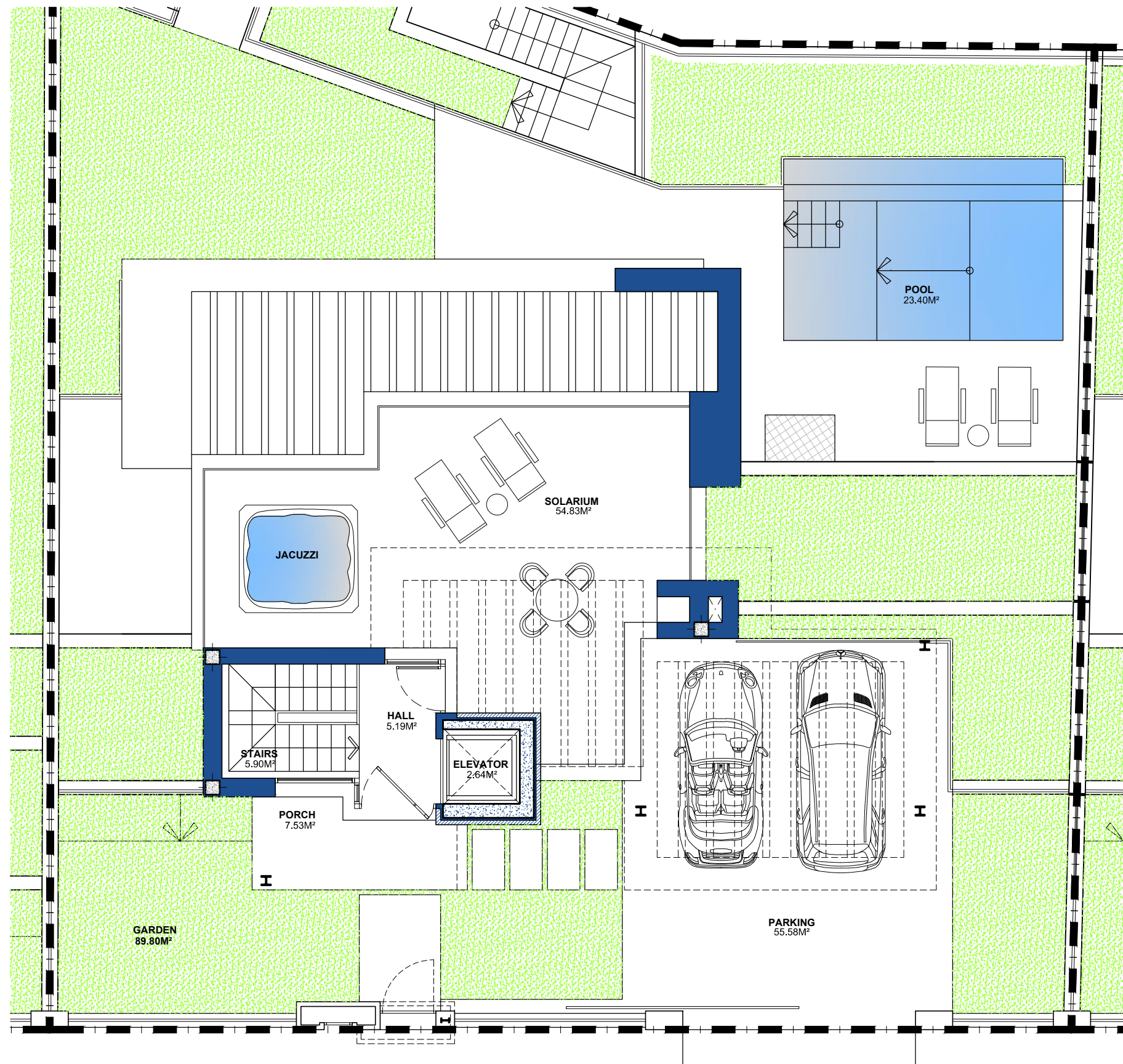
APPROXIMATE USEFUL AREAS M²

Bedroom 1	19,55
Bedroom 2	11,88
Bedroom 3	11,55
Bathroom 1	8,02
Bathroom 2	3,48
Other Areas	17,22
Porches and Terraces	37,88
Total	109.58

SITE PLAN



These images are not contractual but only for illustrative purposes. The images are subject to technical, legal or commercial modifications approved by the project management or the competent authority. The 3D images corresponding to the façades, common elements, and the rest of the spaces are merely indicative and will be subject to verification or modification in the technical projects. The furniture of the 3D images is not included and the equipment of the villas will be indicated in the corresponding building and quality specifications. The energy certification corresponds with the one established in the project in process. All the information and documentation will be provided according to the terms established in the Royal Decree 515/1989 and in the rest of the autonomous or state regulations currently in force that could complement the mentioned decree.

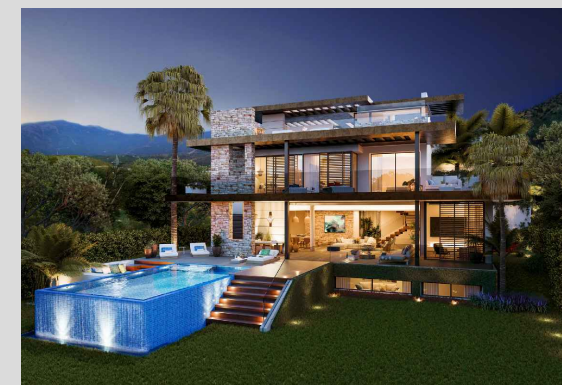


These images are not contractual but only for illustrative purposes. The images are subject to technical, legal or commercial modifications approved by the project management or the competent authority. The 3D images corresponding to the façades, common elements, and the rest of the spaces are merely indicative and will be subject to verification or modification in the technical projects. The furniture of the 3D images is not included and the equipment of the villas will be indicated in the corresponding building and quality specifications. The energy certification corresponds with the one established in the project in process. All the information and documentation will be provided according to the terms established in the Royal Decree 515/1989 and in the rest of the autonomous or state regulations currently in force that could complement the mentioned decree.

lagom

BENAHAVÍS

VILLA 02 Solarium

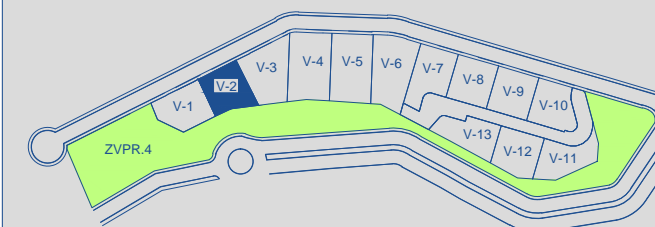


BUILT AREA 92,80 M²

APPROXIMATE USEFUL AREAS M²

Hall	5,19
Other Areas	8,54
Porches and Terraces	62,36
Parking	55,58
Garden	89,80
Total	221,47

SITE PLAN



González Jacobson ARQUITECTURA