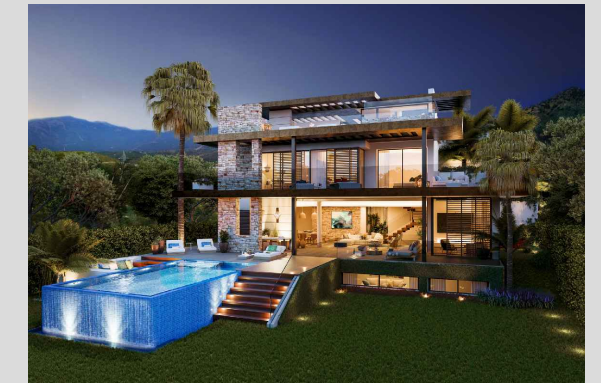



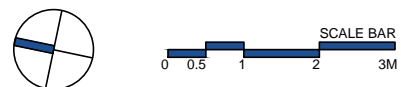
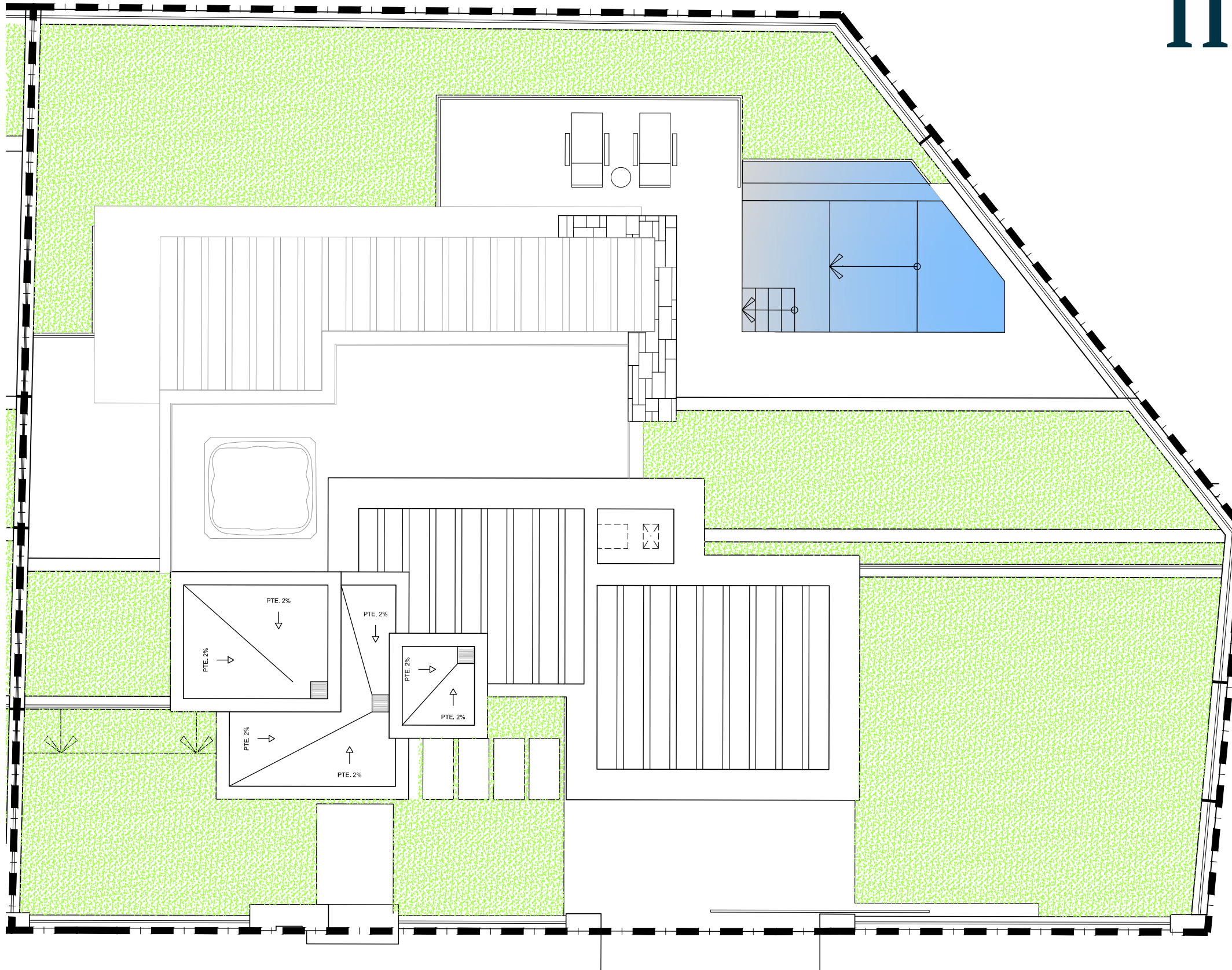
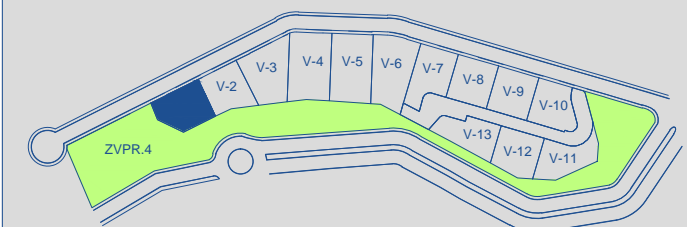
VILLA 01 Site Plan



APPROXIMATE AREAS	M ²
Basement built area	133,01
Ground floor built area	184,74
First floor built area	138,06
Solarium built area	92,80
Parking area	51,98
Pool area	20,46
Total	621,05

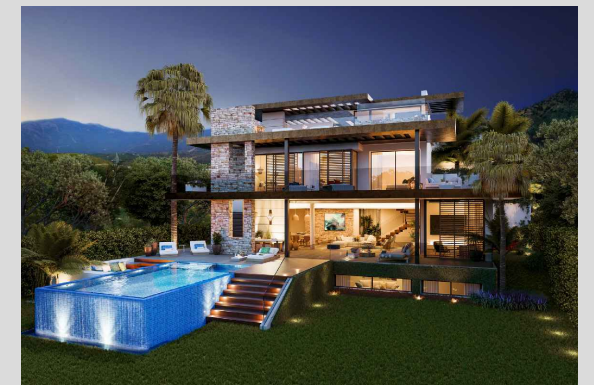
Plot 01 area	527,95
Community green area	5.388,69
Total useful area	269,55

SITE PLAN 



These images are not contractual but only for illustrative purposes. The images are subject to technical, legal or commercial modifications approved by the project management or the competent authority. The 3D images corresponding to the façades, common elements, and the rest of the spaces are merely indicative and will be subject to verification or modification in the technical projects. The furniture of the 3D images is not included and the equipment of the villas will be indicated in the corresponding building and quality specifications. The energy certification corresponds with the one established in the project in process. All the information and documentation will be provided according to the terms established in the Royal Decree 515/1989 and in the rest of the autonomous or state regulations currently in force that could complement the mentioned decree.

VILLA 01 Basement

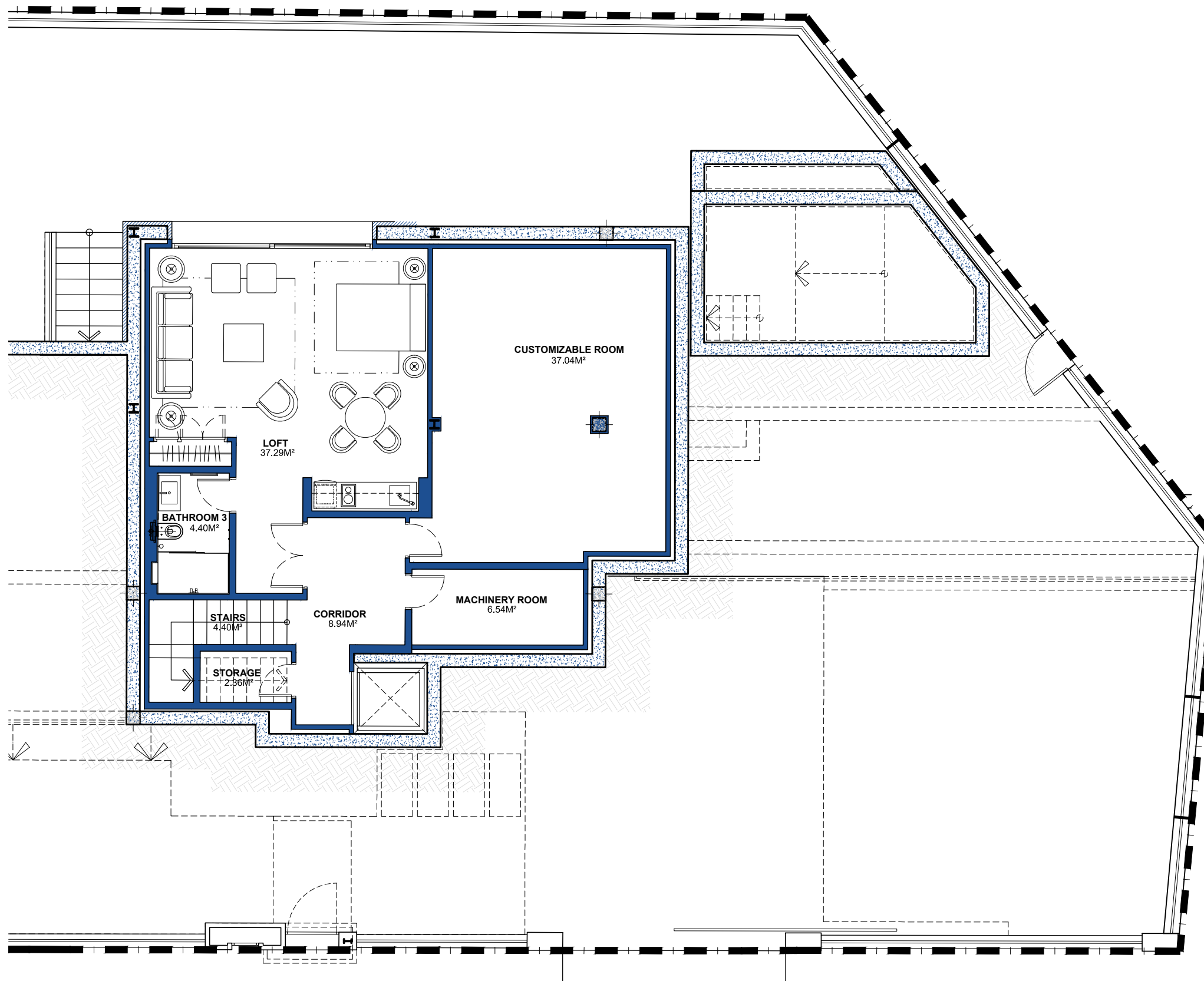
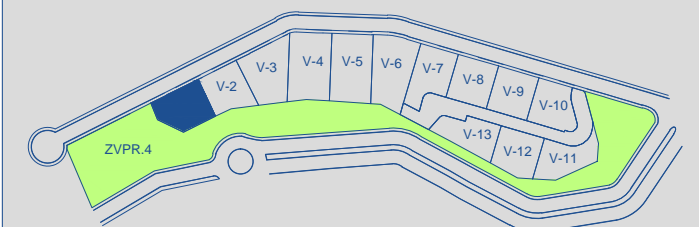


BUILT AREA 133,01 M²

APPROXIMATE USEFUL AREAS M²

Loft	37,29
Customizable Room	37,04
Bathroom 3	4,40
Other Areas	22,24
Total	100,97

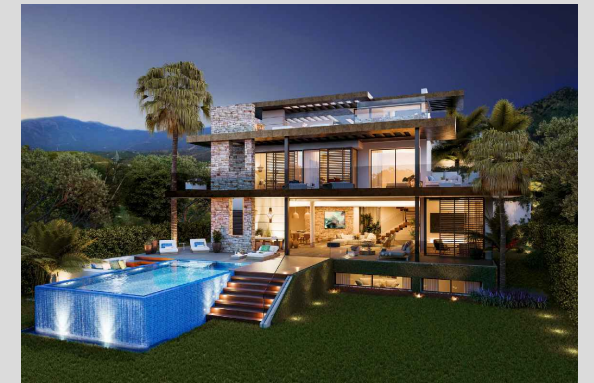
SITE PLAN



SCALE BAR
0 0.5 1 2 3M

These images are not contractual but only for illustrative purposes. The images are subject to technical, legal or commercial modifications approved by the project management or the competent authority. The 3D images corresponding to the façades, common elements, and the rest of the spaces are merely indicative and will be subject to verification or modification in the technical projects. The furniture of the 3D images is not included and the equipment of the villas will be indicated in the corresponding building and quality specifications. The energy certification corresponds with the one established in the project in process. All the information and documentation will be provided according to the terms established in the Royal Decree 515/1989 and in the rest of the autonomous or state regulations currently in force that could complement the mentioned decree.

VILLA 01 Ground Floor

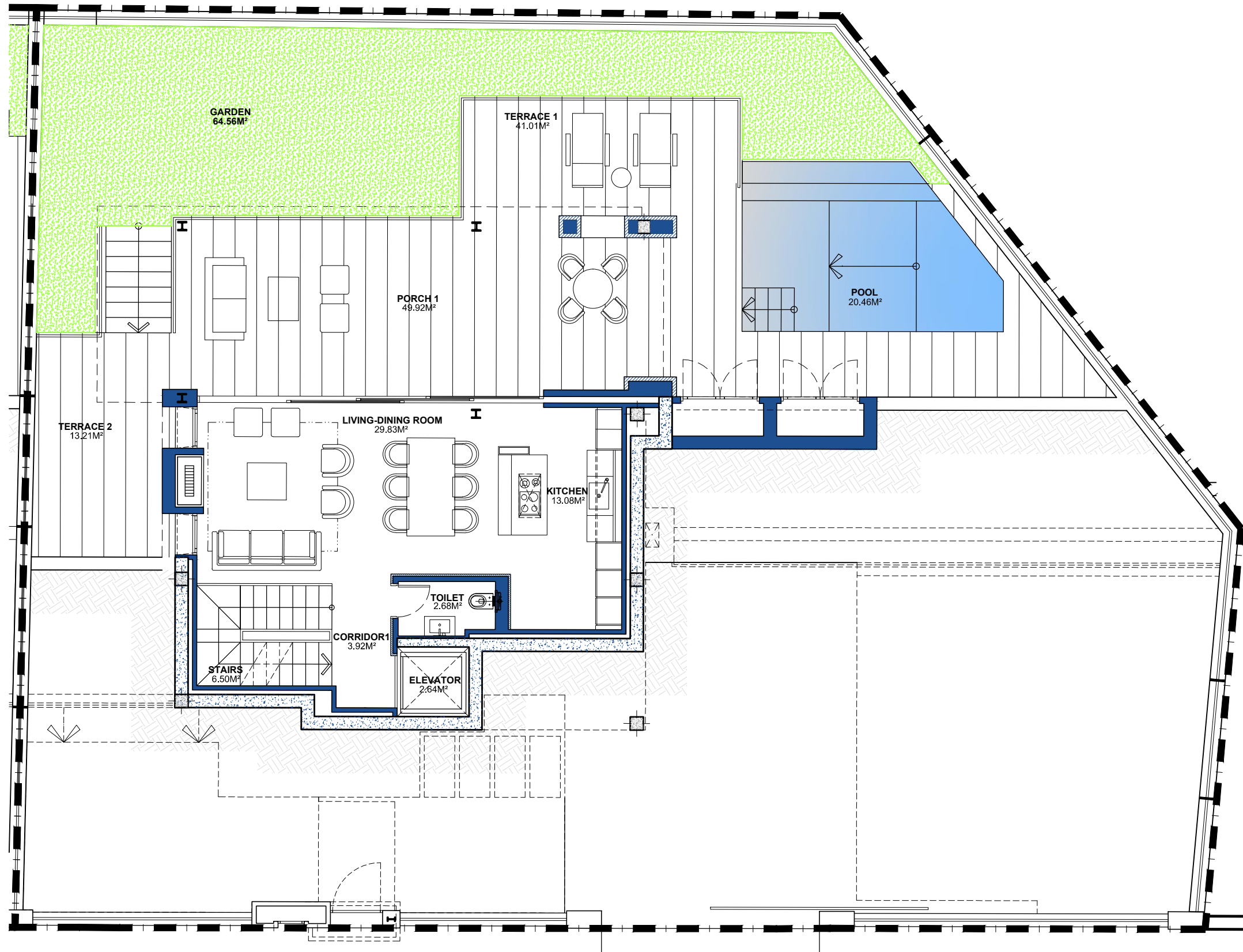
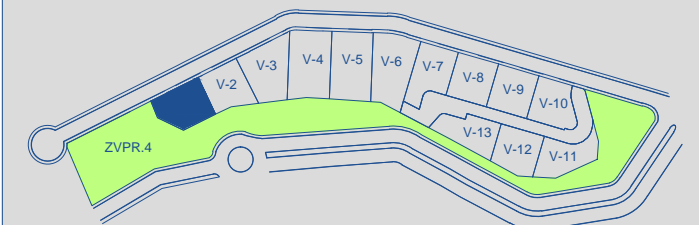


BUILT AREA 184,74 M²

APPROXIMATE USEFUL AREAS M²

Living-Dining Room	29,83
Kitchen	13,08
Toilet	2,68
Other Areas	12,76
Porches and Terraces	104,14
<hr/>	
Pool	20,46
Garden	64,56
Total	247,81

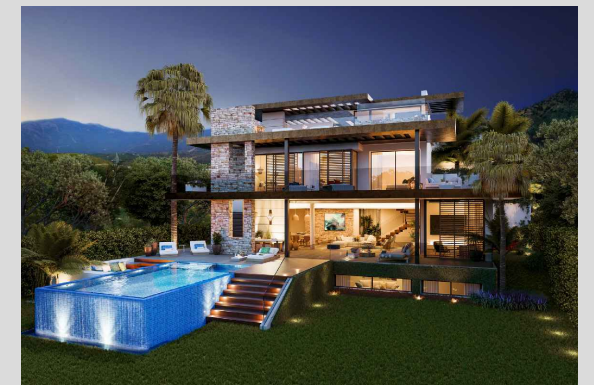
SITE PLAN



SCALE BAR
0 0.5 1 2 3M

These images are not contractual but only for illustrative purposes. The images are subject to technical, legal or commercial modifications approved by the project management or the competent authority. The 3D images corresponding to the façades, common elements, and the rest of the spaces are merely indicative and will be subject to verification or modification in the technical projects. The furniture of the 3D images is not included and the equipment of the villas will be indicated in the corresponding building and quality specifications. The energy certification corresponds with the one established in the project in process. All the information and documentation will be provided according to the terms established in the Royal Decree 515/1989 and in the rest of the autonomous or state regulations currently in force that could complement the mentioned decree.

VILLA 01 First Floor

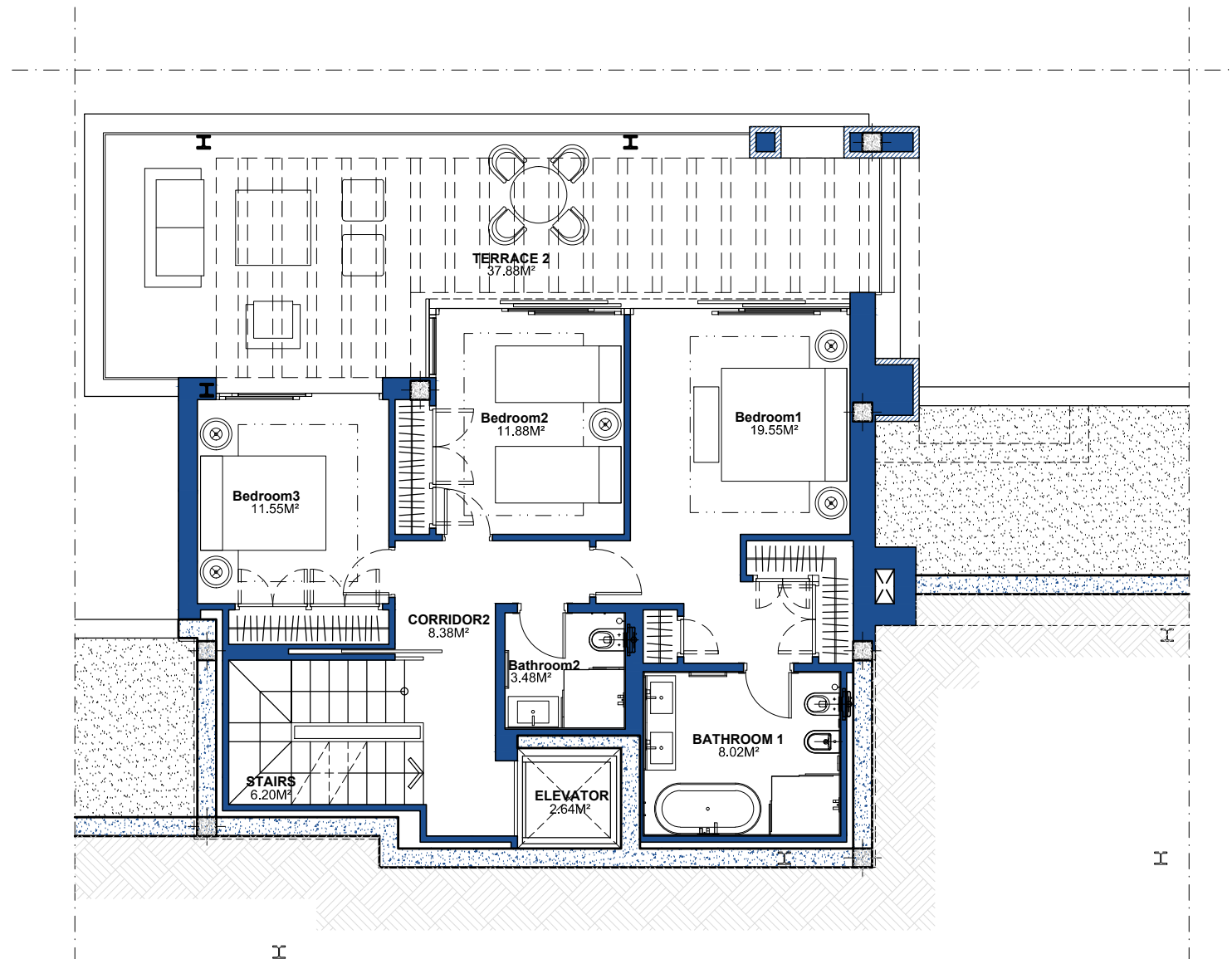
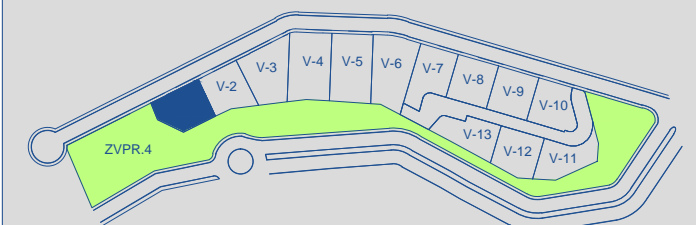


BUILT AREA 138,06 M²

APPROXIMATE USEFUL AREAS M²

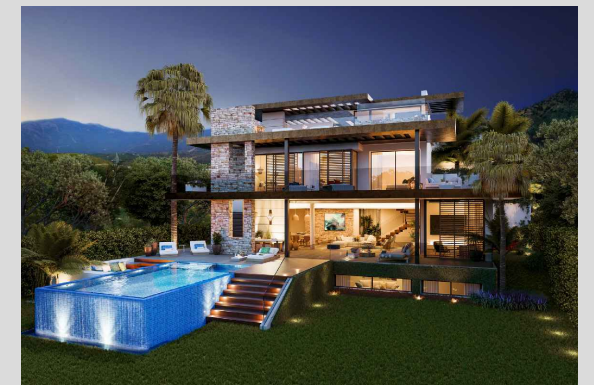
Bedroom 1	19,55
Bedroom 2	11,88
Bedroom 3	11,55
Bathroom 1	8,02
Bathroom 2	3,48
Other Areas	17,22
Porches and Terraces	37,88
Total	109.58

SITE PLAN



These images are not contractual but only for illustrative purposes. The images are subject to technical, legal or commercial modifications approved by the project management or the competent authority. The 3D images corresponding to the façades, common elements, and the rest of the spaces are merely indicative and will be subject to verification or modification in the technical projects. The furniture of the 3D images is not included and the equipment of the villas will be indicated in the corresponding building and quality specifications. The energy certification corresponds with the one established in the project in process. All the information and documentation will be provided according to the terms established in the Royal Decree 515/1989 and in the rest of the autonomous or state regulations currently in force that could complement the mentioned decree.

VILLA 01 Solarium

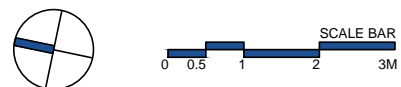
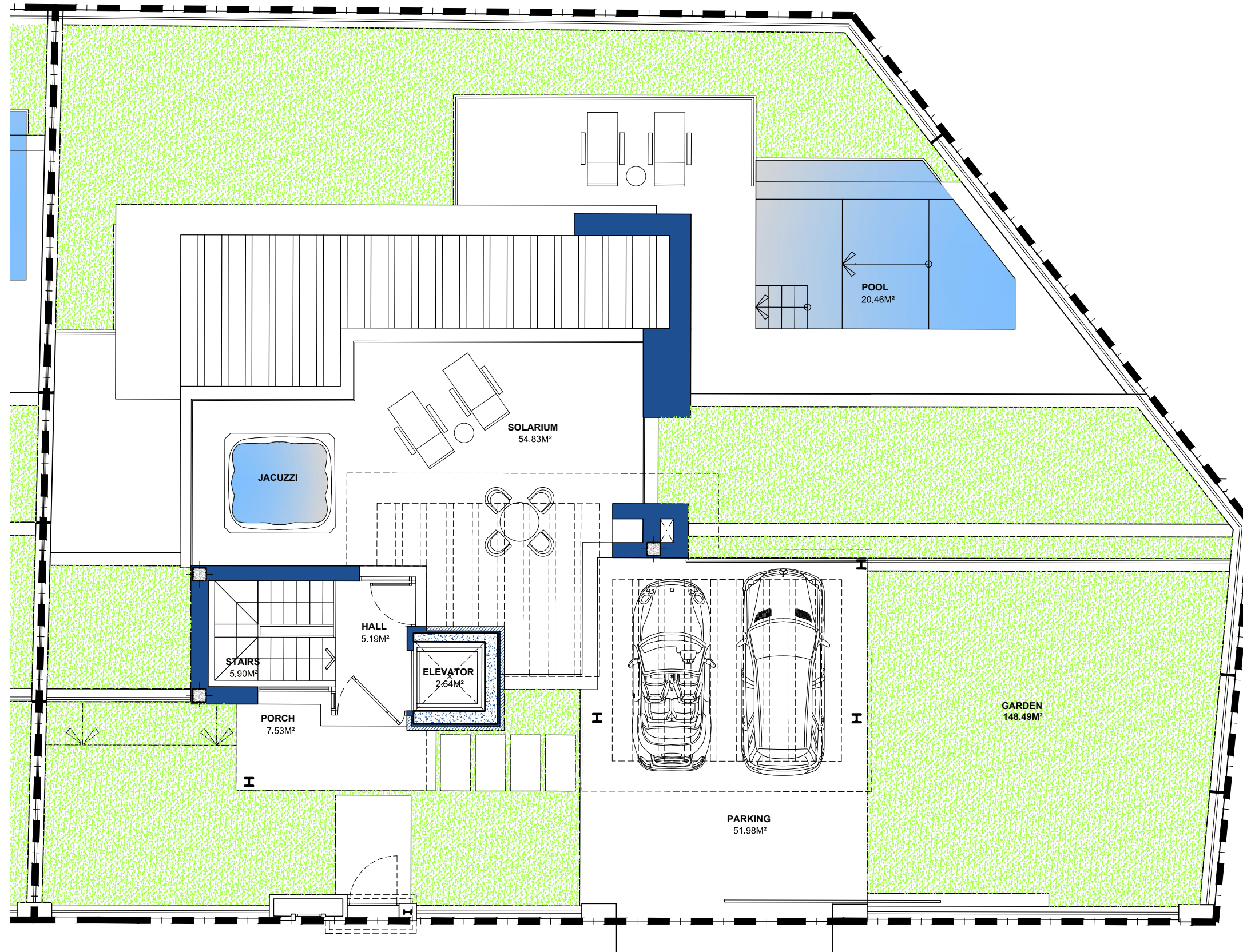
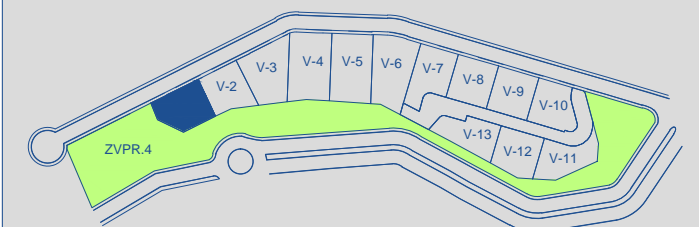


BUILT AREA 92,80 M²

APPROXIMATE USEFUL AREAS M²

Hall	5,19
Other Areas	8,54
Porches and Terraces	62,36
Parking	51,98
Garden	148,49
Total	276,56

SITE PLAN 



These images are not contractual but only for illustrative purposes. The images are subject to technical, legal or commercial modifications approved by the project Management or the competent authority. The 3D images corresponding to the façades, common elements, and the rest of the spaces are merely indicative and will be subject to verification or modification in the technical projects. The furniture of the 3D images is not included and the equipment of the villas will be indicated in the corresponding building and quality specifications. The energy certification corresponds with the one established in the project in process. All the information and documentation will be provided according to the terms established in the Royal Decree 515/1989 and in the rest of the autonomous or state regulations currently in force that could complement the mentioned decree.